

dunbrooke

SINCE 1939

2025

Reebok



Style	Name	Page #
3105	Avenger	14
3106	Avenger-Ladies'	14
3150	Edge Performance Polo	16
3151	Edge Performance Polo-Ladies'	16
3152	Contour Performance L/S Polo	17
3153	Contour Performance 3/4 Slv length Polo-Ladies'	17
3170	Eco Title Polo	10
3171	Eco Title Polo-Ladies'	10
3331	Eclipse Polo	11
3332	Team Polo-Ladies'	15
3333	Eclipse Polo-Ladies	11
3514	Hayden Fleece Jacket-Ladies'	37
3515	Hayden Fleece Jacket	37
3520	Cascade 1/4 Zip Fleece w/Pouch Pocket	38
3542	All Star 1/4 Zip Tech Fleece	41
3544	Alberta	55
3545	Alberta-Ladies'	55
3555	Portal 1/4 Zip Pullover w/ chest pocket	49
3556	Portal 1/4 Zip Pullover w/chest pocket-Ladies'	49
3557	Houston Fleece Vest	40
3558	Houston Fleece Vest-Ladies'	40
3560	Team Polo	15
3561	Dunbrooke Legend Lightweight 1/4 Zip	47
3562	Dunbrooke Legend Lightweight 1/2 Zip-Ladies'	47
5006	Pacific	33
5007	Pacific-Ladies'	33
5116	Maverick henley	34
5118	Cavalier thermal	35
5120	Montana hooded thermal	36
5135	Tropic Waterproof Jacket	58
5208	Softshell Jacket	67
5209	Softshell Jacket-Ladies'	67
5215	Apex Softshell Jacket	64
5216	Apex Softshell Jacket-Ladies'	64
5250	Sonoma Softshell Jacket	65
5251	Sonoma Softshell Jacket-Ladies'	65
5270	Zephyr Softshell Jacket with Heather accent	68
5271	Zephyr Softshell Jacket with Heather accent-Ladies'	68
5411	Decoy Fleece Fullzip Hoodie with Camo Accent	79
5428	Hunter Softshell Jacket	80
5436	Ranger Fleece Pullover with Camo Accent	81
5490	Sportsman Waterproof Jacket-RealTree® Xtra	82
7003	Reebok Echo Heather Hoodie	21
7006	Reebok Freestyle Heather Fleece Jacket	26

NEW STYLES ARE HIGHLIGHTED IN RED

Style	Name	Page #
7007	Reebok Freestyle Heather Fleece Jacket-Ladies'	26
7011	Reebok Cypress Polo	8
7012	Ladies Reebok Cypress Polo	8
7045	Reebok Weekender Pullover Fleece	22
7046	Reebok Daybreak Full Zip Fleece	23
7051	Reebok Max	20
7122	Reebok Endurance Heather Performance Tees	53
7124	Reebok Endurance Heather Performance Tees-Ladies'	53
7126	Reebok Marathon Heather Performance L/S Tees	52
7131	Reebok Cycle Solid Performance Tees	50
7132	Reebok Cycle Solid Performance Tees-Ladies'	50
7133	Reebok Pacer Long Sleeve Performance Tee	51
7208	Reebok Softshell Playshield® Jacket	78
7209	Reebok Softshell Playshield® Jacket-Ladies'	78
7260	Reebok PLAYDRY® Heather Pullover	46
7261	Reebok PLAYDRY® Crossover Heather Pullover-Ladies'	46
7265	Reebok Icon Lightweight 1/4 Zip	45
7266	Reebok Icon Lightweight 1/2 Zip-Ladies'	45
7280	Reebok Playdry® X-Treme Polo	6
7281	Reebok Playdry® X-Treme Polo-Ladies'	6
7290	Reebok Playdry® Athletic Polo	11
7291	Reebok Playdry® Athletic Polo-Ladies	11
7306	Reebok Earth Polo	3
7307	Ladies Reebok Earth Polo	3
7438	Reebok Circuit 1/4 Zip Pullover	44
7439	Reebok Circuit 1/2 Zip Pullover-Ladies'	44
7700	Tempo PLAYDRY® Heather Polo	5
7701	Tempo PLAYDRY® Heather Polo-Ladies	5
8009	Alpha Jacket	69
8019	Archer Softshell Vest	70
8023	Coaches Windbreaker	79
8024	Pathfinder	71
8025	Explorer	72
8026	Explorer-Ladies'	72
8027	Hurricane Ultra Lightweight Full zip jacket	59
8028	Hurricane Ultra Lightweight Full zip jacket-Ladies'	59
8036	Cyclone Lightweight Hooded Jacket	62
8037	Cyclone Lightweight Hooded Jacket-Ladies'	62
8058	Triumph Jacket	76
8174	Journey	73
8175	The Shag	31
8200	Dakota Heavyweight Jacket	77
8411	Trophy Full Zip Tech Fleece-Solid colors	29
8411	Trophy Full Zip Tech Fleece-RealTree Xtra	29
8418	Apprentice	32
8436	The Champion Pullover Tech Fleece-Solid colors	28
8436	The Champion Pullover Tech Fleece-RealTree Xtra	28
8450	Defender	27
8496	Craftsman Workwear Jacket	74
8530	Olympic Jacket	63
8531	Olympic Jacket-Ladies'	63
9516	Legacy Fleece Lined Jacket w/ Contrast stitching	75

# Dunbrooke 2024-2025 Catalog





dunbrøke  
SINCE 1939



# POLOS

7306/7307

Reebok Earth **NEW**

7700/7701

Reebok Tempo

7280/7281

Reebok Extreme

7290/7291

Reebok Athletic Polo

7011/7012

Reebok Cypress

3170/3171

Eco Title **NEW**

3331/3333

Eclipse

3105/3106

Avenger

3560/3332

Team Polo

3150/3151

Edge

3152/3153

Contour

7306-Reebok Earth

# 7306-7307



## NEW

### Reebok Earth

Made from 100% recycled polyester fabric, the Reebok Earth is not only a win for you but for our planet in sustainability. This light-weight, performance polo features a ribbed collar with 3-button placket for the men and a NEW Mandarin v-neck collar with a detailed hem for the ladies.

- 100% recycled polyester,4.6oz
- Ribbed collar with 3-button placket
- Reebok heat transfer on left sleeve
- Ladies: Mandarin collar with v-neck and stylish hem detail

Mens 7306: S-5XL  
Ladies 7307: S-4XL



Reebok	1-23	24-143	144-999	1000+
	\$31.98	\$29.98	\$27.98	\$25.98
Upcharges per item: 2XL+ \$2.00   3XL+ \$4.00   4XL+\$6.00   5XL+ \$8.00 (A)				



Ladies'  
Stylish hem detail





White  
026

Red  
008

# 7700-7701



## Reebok Tempo

BREATHABLE. Heather. Performance. The Tempo is one of our all time faves. Coming in at 4.8oz, this heather performance polo is not only stylish but SNAG-RESISTANT. We added plaited birdseye mesh on the inner layer to enhance the moisture absorption properties.

- 100% Polyester, 4.8oz
- Playdry® moisture-wicking fabric
- Self-collar, 3-button placket with even hem
- Reebok heat transfer on the left sleeve
- Machine washable

Mens 7700: S-5XL TALL: LT, XLT & 2XLT

Ladies 7701: S-4XL



Reebok	1-23	24-143	144-999	1000+
	\$40.98	\$38.98	\$36.98	\$34.98
Upcharges per item: 2XL+ \$2.00   3XL+ \$4.00   4XL+\$6.00   5XL+ \$8.00   LT+ \$2.00   XLT+ \$4.00   2XLT+ \$8.00 (A)				

**UNIQUE!**  
Plaited birdseye mesh for quick drying & fast moisture absorption keeping you cool & dry





# 7280-7281



## Reebok Extreme

When you're in need of a name brand performance polo, made of good quality, comes in a lot of different colors that won't drain your piggy bank, the Extreme is for you! The micro-mesh pique, Reebok Playdry® moisture wicking material will keep you cool and dry so it's one less thing you have to worry about.

- 100% Polyester, 4.3oz
- Playdry® moisture-wicking fabric
- Tonal 3-button placket, flat knit collar and double-stitched cuffs
- Reebok heat transfer on the left sleeve
- Machine washable



Mens 7280: S-5XL Ladies 7281: S-4XL



Reebok	1-23	24-143	144-999	1000+
	\$28.98	\$26.98	\$24.98	\$22.98
Upcharges per item: 2XL+ \$2.00   3XL+ \$4.00   4XL+\$6.00   5XL+ \$8.00 (A)				

# 7290-7291



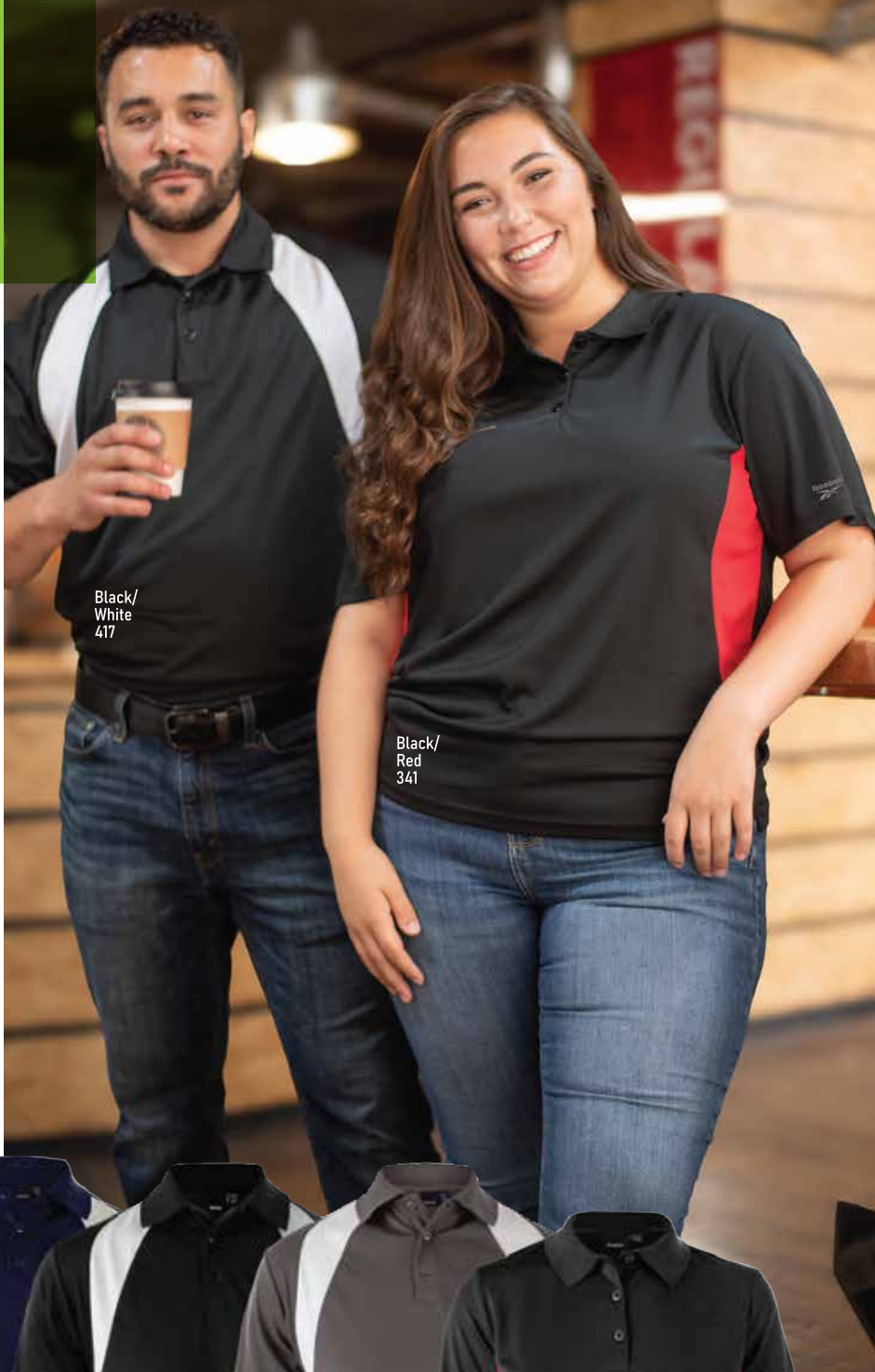
## Reebok Athletic Polo

The Reebok Athletic polo is far from a participation trophy! Made with Reebok Playdry® moisture-wicking material and UV protection properties, this one is in it to win it. Need a little more? We added colorblock front panels with reverse stitching and a tonal 3-button placket making it a true winner.

- 100% Polyester, 4.3oz
- Playdry® moisture-wicking fabric
- Tonal 3-button placket, flat knit collar and double-stitched cuffs
- Ladies' color blocking at sides
- Reebok heat transfered on the left sleeve
- Machine washable

Mens 7290: S-5XL

Ladies 7291: S-4XL



Reebok	1-23	24-143	144-999	1000+
	\$30.98	\$28.98	\$26.98	\$24.98
Upcharges per item: 2XL+ \$2.00   3XL+ \$4.00   4XL+\$6.00   5XL+ \$8.00 (A)				





7011-7012



# Reebok Cypress

Let's face it, all we want is comfort while having to 'dress up'. So what did we do? We added Spandex to our already amazing Reebok Playdry® material. This is the ultimate combination for comfort, performance and durability.

- 92% Polyester/8% Spandex, 5oz
  - Playdry® moisture-wicking fabric
  - Self-collar, 3-button placket with even hem
  - Reebok heat transfer on the left sleeve
  - Machine washable
- Mens 7011: S-5XL  
Ladies 7012: S-4XL



Royal  
003

Navy  
004

Red  
008

Black  
017

White  
026

Graphite  
904

Reebok	1-23	24-143	144-999	1000+
	\$40.98	\$38.98	\$36.98	\$34.98
Upcharges per item: 2XL+ \$2.00   3XL+ \$4.00   4XL+\$6.00   5XL+ \$8.00 (A)				





Red Heather  
915

Navy Heather  
466



# 3170-3171

dunbrøke  
SINCE 1939

## NEW

### Eco Title

Achieving style and comfort has never been easier than it is with EcoTitle. This heather performance polo is made from recycled polyester, making it the perfect choice for sustainability. The mens features a ribbed collar with 3-button placket and the ladies a NEW Mandarin v-neck collar with a detailed hem.

-100% recycled polyester, 4.6oz

-Ribbed collar with 3-button placket

-Ladies: Mandarin collar with v-neck and stylish hem detail

Mens 3170: S-5XL

Ladies 3171: S-4XL



Royal Heather  
916

Charcoal  
Heather  
050

Red Heather  
915

Navy Heather  
466

Red Heather  
915

Black Heather  
578



dunbrøke SINCE 1939	1-23	24-143	144-999	1000+
	\$27.98	\$25.98	\$23.98	\$21.98
Upcharges per item: 2XL+ \$2.00   3XL+ \$4.00   4XL+\$6.00   5XL+ \$8.00 (A)				



Stylish hem detail

# 3331-3333

dunbrøke  
SINCE 1939

## Eclipse

This UV protected colorblock polo is sure to add some pizzazz to your life. The colorblock panels are on the front side outlined with reverse stitching to give it a little more detail to set it apart from the others.

- 100% Polyester, 4.3oz
- D-Dri moisture-wicking fabric
- Tonal 3-button placket & double stitched self-cuffs
- Ladies' colorblocking at sides
- Machine washable

Mens 3331: S-5XL

Ladies 3333: S-4XL



dunbrøke  
SINCE 1939

1-23	24-143	144-999	1000+
\$26.98	\$24.98	\$22.98	\$20.98

Upcharges per item: 2XL+ \$2.00 | 3XL+ \$4.00 | 4XL+\$6.00 | 5XL+ \$8.00 (A)





Navy/  
White  
404

Black/  
White  
417



White  
026

Red  
008



# 3105-3106

dunbrøke  
SINCE 1939

## Avenger

The Avenger is an all time favorite. This short sleeve polo has multi-width silver stripes on both sleeves allowing you to dress it up for work or take a couple swings on the golf course.

-100% Polyester, 5oz

-Horizontal silver stripes on sleeves, self collar

-Machine washable

-Mens 3-Button placket and Ladies 1/4 zip

Mens 3105: S-5XL

Ladies 3106: S-4XL



dunbrøke SINCE 1939	1-23	24-143	144-999	1000+
	\$30.98	\$28.98	\$26.98	\$24.98

Upcharges per item: 2XL+ \$2.00 | 3XL+ \$4.00 | 4XL+\$6.00 | 5XL+ \$8.00

(A)

# 3560-3332

dunbroke  
SINCE 1939

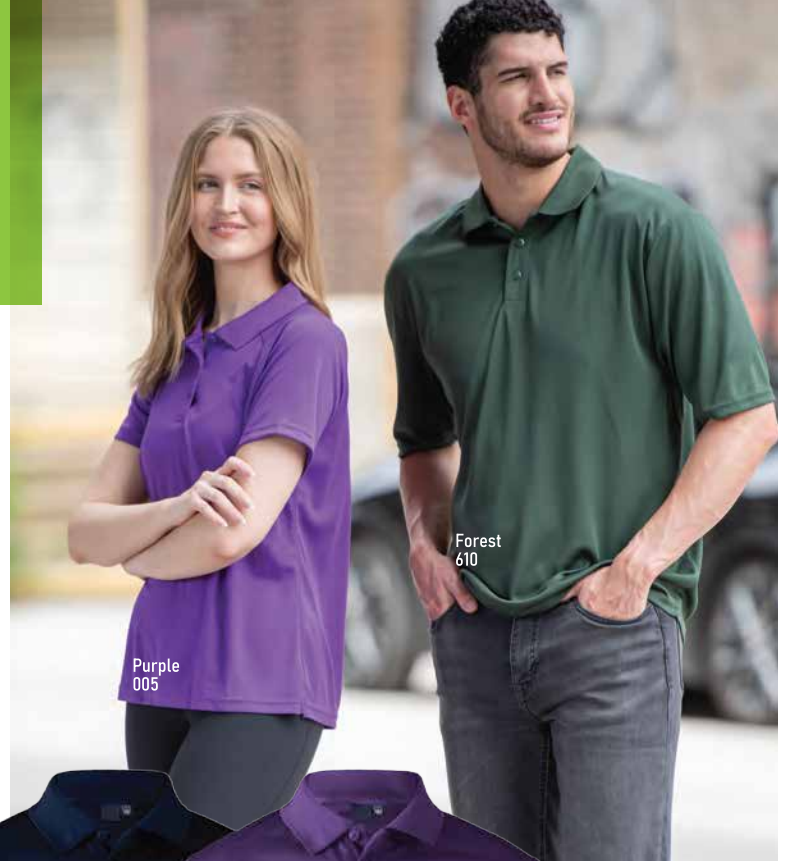
## Men's & Ladies Team Polo

This bad boy is our best value polo – not only because of its price point but because of its quality. The light weight, UV protection and performance fabric make it perfect for any activity. Not to mention the 12 colors it comes in!

- 100% Polyester pique, 4.3oz/145gsm
- D-Dri moisture-wicking fabric
- Flat knit collar, 3-button placket
- Ladies' flat knit collar, raglan sleeves & double stitched self-cuffs
- Machine washable

Mens 3560: S-6XL

Ladies 3332: XS-4XL



dunbroke  
SINCE 1939

1-23	24-143	144-999	1000+
\$18.98	\$16.98	\$14.98	\$12.98

Upcharges per item: 2XL+ \$2.00 | 3XL+ \$4.00 | 4XL+\$6.00 | 5XL+ \$8.00 (A)



Light  
Blue  
002



# 3150-3151

dunbrooke  
SINCE 1939

## Edge

SNAG RESISTANT. Yep! Our Edge is ready to help you conquer your snagging fears. It also offers a soft performance fabric made to wick moisture away, keeping you cool and dry.

-100% Polyester interlock, 5oz/170gsm

-D-Dri moisture-wicking fabric

-3-button placket & flat knit collar

-Machine washable

-Mens: Drop tail with side vent

-Ladies: Even hem with side vent

Mens 3150: S-5XL | TALL: LT, XLT & 2XLT in Navy, Black, Graphite

Ladies 3151: S-4XL

Black  
017

Royal  
003

Navy  
004

Red  
008

Royal  
003

Black  
017

White  
026

Graphite  
904



dunbrooke  
SINCE 1939

	1-23	24-143	144-999	1000+
	\$25.98	\$23.98	\$21.98	\$19.98

Upcharges per item: 2XL+ \$2.00 | 3XL+ \$4.00 | 4XL+\$6.00 | 5XL+ \$8.00 | LT+ \$2.00 | XLT+ \$4.00 | 2XLT+ \$8.00 (A)

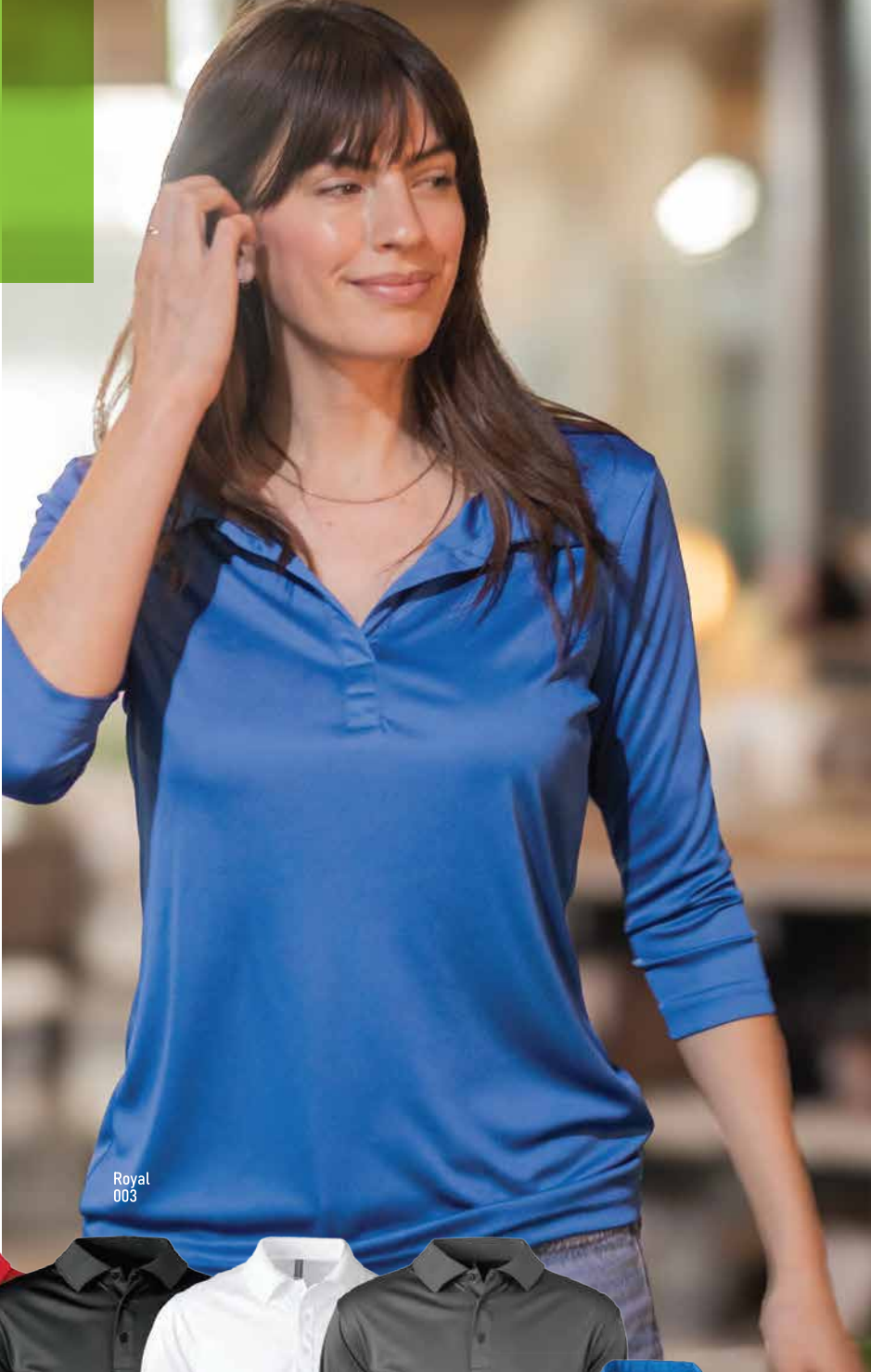
Contour

Don't forget to add the long-sleeve version to the SNAG RESISTANT family! But don't worry ladies, we made sure this one wasn't just the plain ol' basic version you're used to. The women's style is a ¾ sleeve with a Johnny collar – keeping you stylish and comfortable.

- 100% Polyester interlock, 5oz/170gsm
- D-Dri moisture-wicking fabric
- Machine washable
- Mens: Flat knit collar with drop tail and side vent
- Ladies: ¾ length sleeve & Johnny collar

Mens 3152: S-5XL

Ladies 3153: S-4XL



Royal 003

Navy 004

Red 008

Black 017

White 026

Graphite 904

Royal 003

dunbrøke	1-23	24-143	144-999	1000+
SINCE 1939	\$29.98	\$27.98	\$25.98	\$23.98

Upcharges per item: 2XL+ \$2.00 | 3XL+ \$4.00 | 4XL+\$6.00 | 5XL+ \$8.00
(A)





dunbroke  
SINCE 1939



## FLEECE/1/4 ZIPS/TEES

7051

Reebok Max **NEW**

7003

Reebok Echo

7045

Reebok Weekender

7046

Reebok Daybreak

7006/7007

Reebok Freestyle

8450

Defender

8411

Champion

8411RT

Champion-RealTree

8436

Trophy

8436RT

Trophy-RealTree

8175

Shag

8418

Apprentice

5006/5007

Pacific

5116

Maverick

5118

Cavalier

5120

Montana

3515/3514

Hayden

3557/3558

Houston

3520

Cascade

3542

All-Star

7438/7439

Reebok Circuit

7265/7266

Reebok Icon

7260/7261

Reebok Crossover

3561/3562

Legend

3555/3556

Portal

7131/7132

Reebok Cycle

7133

Reebok Pacer

7126

Reebok Marathon

7122/7124

Reebok Endurance

7003-Reebok Echo

# 7051



## NEW

### Reebok Max

The Reebok Max takes the qualities of our light-weight jersey tees that we love so much and added a hood. Whether you're working out or just running errands, this stylish long-sleeve performance hoodie is just the right fit.

- 100% Polyester, 4oz
- Long-sleeve jersey fabric with hood
- Reflective Reebok heat transfer on bottom right hem
- Machine washable

7051: S-5XL

Available Fall 2024



1-23	24-143	144-999	1000+
\$25.98	\$23.98	\$21.98	\$19.98

Upcharges per item: 2XL+ \$2.00 | 3XL+ \$4.00 | 4XL+\$6.00 | 5XL+ \$8.00 (A)





Black  
017

## Reebok Echo

This Reebok heathered hoodie is one of our faves! It is super soft and just the amount of weight to keep you warm and cozy. The horizontal heather pattern gives it a unique coloring effect that is different than the 'norm'. You'll be hearing about this one for days on end!

- 100% Polyester, 7oz
- Horizontal heathering with Reebok heat transfer on bottom hem
- Mesh lined hood, brush interior, pouch pocket
- Machine washable

7003: S-5XL



Reebok	1-23	24-143	144-999	1000+
	\$44.98	\$42.98	\$40.98	\$38.98

Upcharges per item: 2XL+ \$2.00 | 3XL+ \$4.00 | 4XL+\$6.00 | 5XL+ \$8.00 (A)





# 7045



## Reebok Weekender

Don't let the name fool you - this guy is not just for the weekend. Head on over to the grocery, the gym, a buddy's house for football. No matter where you're going or what you're doing, the Reebok Weekender is ready for all of it, so you will be too.

- 100% Spun polyester, 7.7oz
- Reebok ActivChill® pullover with hood
- Durable polyester but super soft like cotton
- Tonal Reebok logo embroidered on left sleeve
- Machine washable

7045: XS-5XL | TALL: XLT & 2XLT in all colors

Tonal Reebok logo embroidered on the left sleeve/bicep



Ocean Blue 095



Navy 004

Red 008

Black 017

Heather Grey 043

Heather Charcoal 050

Ocean Blue 095

Reebok	1-23	24-143	144-999	1000+
	\$36.98	\$34.98	\$32.98	\$30.98
Upcharges per item: 2XL+ \$2.00   3XL+ \$4.00   4XL+\$6.00   5XL+ \$8.00   LT+ \$2.00   XLT+ \$4.00   2XLT+ \$8.00 (A)				

# 7046



## Reebok Daybreak

This Reebok fleece is oober soft and easy to just throw on when you need something to wear. It will keep you warm during the chilly months and comfortable when lounging around the house - twofer!

- 100% Spun polyester, 7.7oz/260gsm
- Reebok ActivChill® full zip fleece with hood
- Tonal Reebok logo embroidered on left sleeve
- Machine washable

7046: XS-5XL | TALL: LT, XLT & 2XLT in all colors



Reebok	1-23	24-143	144-999	1000+
	\$40.98	\$38.98	\$36.98	\$34.98
Upcharges per item: 2XL+ \$2.00   3XL+ \$4.00   4XL+\$6.00   5XL+ \$8.00   LT+ \$2.00   XLT+ \$4.00   2XLT+ \$8.00 (A)				



Tonal Reebok logo embroidered on the left sleeve/bicep





Red  
008



# Teflon Shield+ fabric protector

Teflon™ fabric protector provides the invisible barrier consumers need to help protect against stains, spills and other mishaps. Products treated with Teflon™ fabric protector offer convenience, performance and protection.



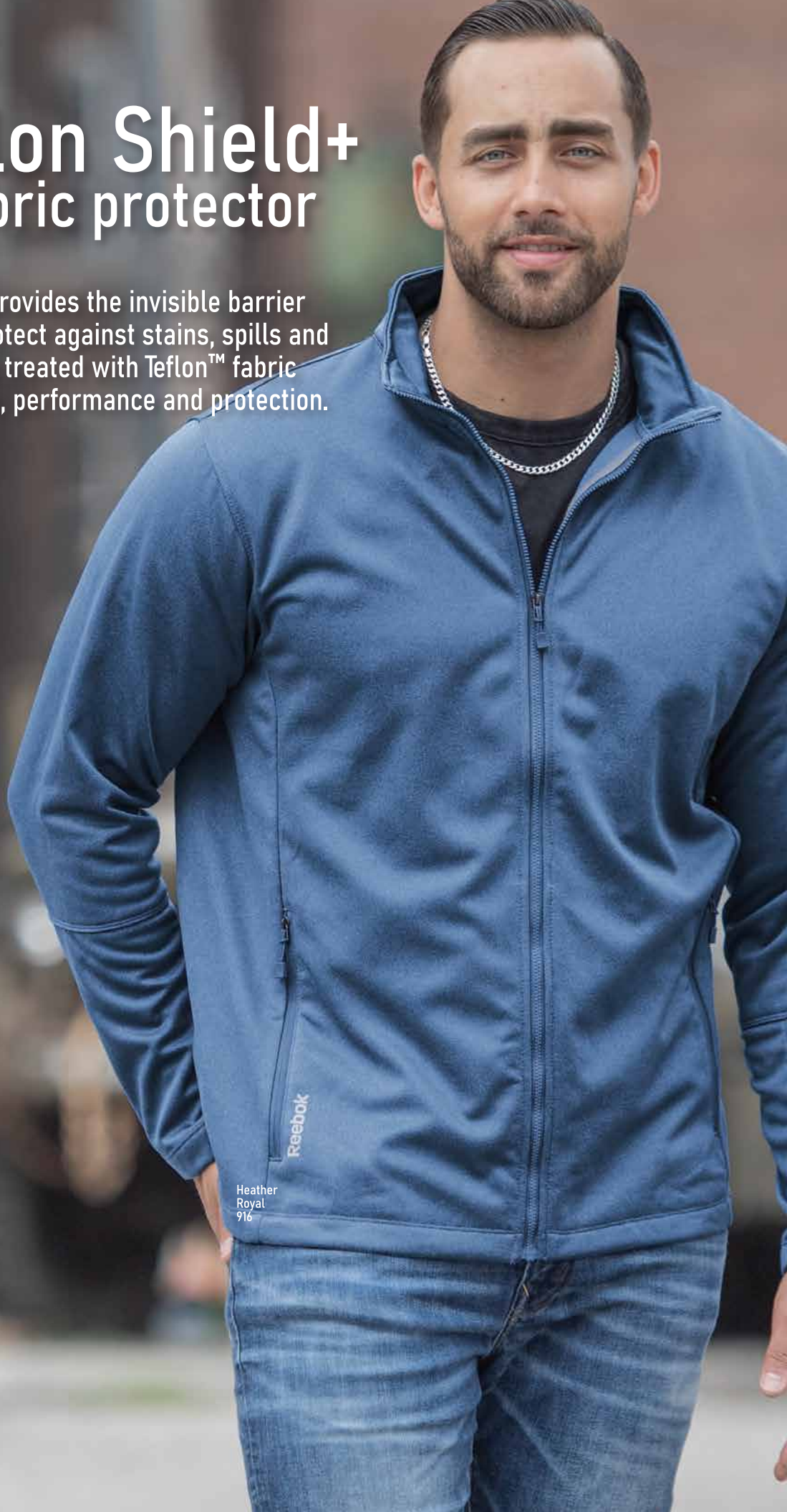
Repels water,  
oil and stains



Dries quicker



Durable





# 7006-7007



## Reebok Freestyle

Have you ever seen water droplets bead up on a surface? They don't get absorbed and just roll right off. Pretty cool right? Well what if we told you we put that same fancy beading technology onto a heather jacket? Yep! Our Reebok Freestyle is coated with Teflon making it repel water, oil and stains. Add a zipper pocket to the left sleeve and you have yourself a perfect fleece jacket.

- 100% Polyester, 7.5oz/255gsm

- Teflon coated, full-zip jacket, zipper pockets on front & on left sleeve

- Reebok heat transfer logo along front right pocket

- Machine washable

Mens 7006: S-5XL Ladies 7007: S-4XL

Heather  
Charcoal  
050

Heather  
Royal  
916

Heather  
Black  
578

Heather  
Navy  
466

Heather  
True Blue  
600



1-23	24-143	144-999	1000+
\$52.98	\$50.98	\$48.98	\$46.98

Upcharges per item: 2XL+ \$2.00 | 3XL+ \$4.00 | 4XL+\$6.00 | 5XL+ \$8.00 (A)

Defender

There is something about a cozy hooded ¼ zip that makes you swoon. The heavy-weight Defender is the ideal choice if you're looking for something warm to hang out around the house in or work on the job. The mock neck collar and brass zipper finish it off making it the perfect hoodie.

- 55% Cotton/45% Polyester, 13oz
  - 3-piece jersey lined hood with drawcord
  - Water resistant
  - Mock neck collar with antique-finish brass zipper, rib knit cuff and waist
  - Machine washable
- 8450: S-5XL



dunbrooke SINCE 1939	1-23	24-143	144-999	1000+
	\$56.98	\$54.98	\$52.98	\$50.98
Upcharges per item: 2XL+ \$2.00   3XL+ \$4.00   4XL+ \$6.00   5XL+ \$8.00 (A)				



# 8436 8436RT

dunbrøke  
SINCE 1939

REALTREE Xtra

## Champion

Cozy up in our TECH FLEECE performance hoodie at home or when you're on the go. A mesh lined drawstring hood, front pouch pocket and reverse stitching makes it the whole kit-n-caboodle.

-100% Polyester, 7.5oz/255gsm

-Brushed inner layer

-Also available in a Realtree Xtra pattern

-Machine washable

8436: S-5XL



dunbrøke SINCE 1939	1-23	24-143	144-999	1000+
	\$36.98	\$34.98	\$32.98	\$30.98
REALTREE Xtra	\$46.98	\$44.98	\$42.98	\$40.98
Upcharges per item: 2XL+ \$2.00   3XL+ \$4.00   4XL+\$6.00   5XL+ \$8.00 (A)				

# 8411 8411RT

dunbrooke  
SINCE 1939



## Trophy

Walking out the door and feel a nip in the air?  
Chilly in the office or at school? Grab it and go!  
Our full-zip TECH FLEECE performance hoodie  
is great for just that. Hand warmer pockets, a  
mesh lined drawstring hood and a YKK zipper  
make it all possible.

- 100% Polyester, 7.5oz
  - Brushed inner layer
  - Also available in Realtree Xtra pattern
  - Machine washable
- 8411: S-5XL



dunbrooke SINCE 1939 REALTREE Xtra	1-23	24-143	144-999	1000+
	\$38.98	\$36.98	\$34.98	\$32.98
	\$52.98	\$50.98	\$48.98	\$46.98
Upcharges per item: 2XL+ \$2.00   3XL+ \$4.00   4XL+\$6.00   5XL+ \$8.00 (A)				





Realtree  
767



## Shag

Most people love cuddling up with a nice warm sherpa blanket on those bitter cold days. With that in mind, we added a sherpa lining to this super soft full zip hoodie. This Tri-Blend will most certainly keep you warm and snug - so much so you won't want to ever take it off.

- 87% Polyester/9% Rayon/4% Spandex
- Sherpa lined full zip hoodie
- Water resistant
- Right chest & side zipper pockets
- Machine washable

8175: S-5XL



Royal  
003



Royal  
003

Navy  
004

Red  
008

Black  
017

Heather  
Charcoal  
050

Forest  
610

dunbrooke SINCE 1939	1-23	24-143	144-999	1000+
	\$67.98	\$65.98	\$63.98	\$61.98
Upcharges per item: 2XL+ \$2.00   3XL+ \$4.00   4XL+\$6.00   5XL+ \$8.00 (A)				



# 8418

dunbrøke  
SINCE 1939

## Apprentice

Thermals and hoodies are the general go-to for warmth so for the Apprentice, we combined the two. The outer shell is that of a hoodie while the inner is a heavy duty polythermal. This jacket helps lock in your body heat and comes in several colors with contrast color liners, all of which have deep open pouch pockets.

-100% Polyester, 7.5oz/238gsm (outer)

-100% Polythermal lining, 7oz/238gsm (inner)

-Full zip front, deep open front pouch pockets

-Machine washable

8418: S-5XL

Royal/  
White  
403

Navy/  
Lime  
076

Navy/  
Red  
801

Navy/  
Orange  
806

Navy/  
Grey  
808

Black/  
Gold  
828

Grey/  
Black  
861

Royal/  
White  
403

Red/  
Black  
894

Purple/  
Black  
872

Forest/  
Black  
311

Black/  
Grey  
851

dunbrøke SINCE 1939	1-23	24-143	144-999	1000+
	\$59.98	\$57.98	\$55.98	\$51.98
Upcharges per item: 2XL+ \$2.00   3XL+ \$4.00   4XL+\$6.00   5XL+ \$8.00 (A)				

# 5006-5007

dunbrooke  
SINCE 1939

## Pacific

Have you ever seen water droplets bead up on a surface? They don't get absorbed and just roll right off. Pretty cool right? Well what if we told you we put that same fancy beading technology onto a heather jacket? Yep! This piece is coated with Teflon making it repel water, oil and stains. Add a zipper pocket to the left sleeve and you have yourself a perfect fleece jacket.

- 100% Polyester, 7.5oz
- Teflon coated for water and stain repellent
- Full zip tech fleece
- Welded zipper pocket on sleeve, front zippered pockets & open cuff
- Machine washable

Mens 5006: S-5XL

Ladies 5007: S-4XL



**Teflon Shield+**  
fabric protector



Repels water,  
oil and stains



Dries quicker



Durable

dunbrooke SINCE 1939	1-23	24-143	144-999	1000+
	\$45.98	\$43.98	\$41.98	\$39.98
Upcharges per item: 2XL+ \$2.00   3XL+ \$4.00   4XL+ \$6.00   5XL+ \$8.00 (A)				





# 5116

dunbrøke  
SINCE 1939

## Maverick

Weighing in at 7.6oz, we present to you our thermal henley! The thick waffle textured material makes this perfect to wear as a base or top layer to keep you warm. Soft and warm. What's not to like?!

-60% Cotton/40% Polyester, 7.6oz

-3-button placket and jersey cuffs

-Machine washable

5116: S-5XL



Thick waffle textured  
material to ensure warmth

dunbrøke  
SINCE 1939

1-23	24-143	144-999	1000+
\$34.98	\$32.98	\$30.98	\$28.98

Upcharges per item: 2XL+ \$2.00 | 3XL+ \$4.00 | 4XL+\$6.00 | 5XL+ \$8.00

(A)

# 5118

dunbroke  
SINCE 1939

## Cavalier

Knowing how much our henley was loved, we added the Cavalier, a crew neck thermal. With the thick waffle textured material, it's ideal for layering or wearing on its own. You won't have any issues with warmth here!

-60% Cotton/40% Polyester, 7.6oz/260gsm

-Waffle knit for breathability

-Crew neck and jersey cuffs

-Machine washable

5118: S-5XL



Thick waffle textured material to ensure warmth



Forest  
610



Royal  
003

Navy  
004

Red  
008

Black  
017

Grey  
043

Forest  
610

dunbroke  
SINCE 1939

1-23

24-143

144-999

1000+

\$34.98

\$32.98

\$30.98

\$28.98

Upcharges per item: 2XL+ \$2.00 | 3XL+ \$4.00 | 4XL+ \$6.00 | 5XL+ \$8.00 (A)



# 5120

dunbrøke  
SINCE 1939

## Montana

Added to the thermal family is the Montana. Not only is it the perfect weight to either wear on its own or as a layering piece, it now comes with a hood. The breathable thick waffle fabric will keep you comfortable for any activity.

-60% Cotton/40% Polyester, 7.6oz

-Thick waffle textured thermal

-3-button placket with hood

-Jersey cuffs

-Machine washable

5120: S-5XL

Royal  
003

Royal  
003

Grey  
043

Forest  
610

Black  
017

Navy  
004

Red  
008

dunbrøke SINCE 1939	1-23	24-143	144-999	1000+
	\$35.98	\$33.98	\$31.98	\$29.98
Upcharges per item: 2XL+ \$2.00   3XL+ \$4.00   4XL+\$6.00   5XL+ \$8.00 (A)				

3514-3515

dunbrooke  
SINCE 1939

Hayden

Our best value fleece, the Hayden. This light weight, anti-pill fleece jacket is just the right amount of weight and coziness to keep you comfortable on those chilly days outside, around the office or in school.

- 100% Polyester, 6oz/200gsm
  - High collar & open hem
  - Machine washable
  - Mens: Front welt pockets
  - Ladies: Front zipper pockets
- Mens 3515: S-6XL  
Ladies 3514: S-4XL



dunbrooke SINCE 1939	1-23	24-143	144-999	1000+
	\$31.98	\$29.98	\$27.98	\$23.98
Upcharges per item: 2XL+ \$2.00   3XL+ \$4.00   4XL+\$6.00   5XL+ \$8.00 (A)				





## Cascade

Every closet needs a light-weight fleece, whether it be something to just put on or to wear out and about. The Cascade offers a light, anti-pill fabric with a ¼ zip finish. The stretch binding at the cuffs and kangaroo pocket are great additions to help keep you warm and cozy.

- 100% Polyester, 6oz
- Lightweight, anti-pill fleece 1/4 zip
- Self stand-up collar and stretch binding at the cuffs
- Kangaroo pouch pocket on the front
- Machine washable

Mens 3520: S-5XL



Grey  
091

Navy  
004

Black  
017

Grey  
091

dunbrøke SINCE 1939	1-23	24-143	144-999	1000+
	\$31.98	\$29.98	\$27.98	\$25.98
Upcharges per item: 2XL+ \$2.00   3XL+ \$4.00   4XL+\$6.00   5XL+ \$8.00 (A)				



Black  
017



# 3557-3558

dunbrøke  
SINCE 1939

## Houston

A companion to our Hayden fleece full zip jacket, we have our fleece vest. With its anti-pill material and high collar, it's perfect for layering and just the right amount of extra warmth.

-100% Polyester, 6oz/200gsm

-High collar & open hem

-Machine washable

-Mens: Front welt pockets

-Ladies: Front zipper pockets

Mens 3557: S-5XL

Ladies 3558: S-4XL



dunbrøke SINCE 1939	1-23	24-143	144-999	1000+
	\$27.98	\$25.98	\$23.98	\$21.98
Upcharges per item: 2XL+ \$2.00   3XL+ \$4.00   4XL+\$6.00   5XL+ \$8.00 (A)				

# All-Star

Ideal for running errands, going to a game or just hanging out, our TECH FLEECE ¼ zip pullover will keep you warm and dry with its quick drying properties. We've added pockets along the side seams for versatility and a YKK zipper for durability.

- 100% Polyester, 7.5oz/255gsm
- Brushed inner layer
- Machine washable

3542: S-5XL



dunbroøke <small>SINCE 1939</small>	1-23	24-143	144-999	1000+
	\$36.98	\$34.98	\$32.98	\$30.98
Upcharges per item: 2XL+ \$2.00   3XL+ \$4.00   4XL+\$6.00   5XL+ \$8.00 (A)				





Navy  
004

Royal  
003



Heather Royal/  
Royal 073

Heather Navy/Navy 076



# 7438-7439



## Reebok Circuit

Our REVERSIBLE Reebok ¼ zip will make you fall head over heels with its heather pattern on one side and a solid color on the other, topped off with a contrasting color zipper and matching heat transfer Reebok logo on the left cuff. We've also added a plaited micro dot backing to this Playdry® material to provide quick moisture absorption to keep you cool and dry for any activity.

-100% Polyester, 4.7oz/160gsm

-Reversible ¼ zip pullover

-Reebok heat transfer on left cuff

-Machine washable

-Ladies: ½ zip front

Mens 7438: S-5XL

Ladies 7439: S-4XL



1-23	24-143	144-999	1000+
\$52.98	\$50.98	\$48.98	\$46.98

Upcharges per item: 2XL+ \$2.00 | 3XL+ \$4.00 | 4XL+\$6.00 | 5XL+ \$8.00 (A)

7265-7266



Reebok Icon

This buttery soft, jersey fabric, performance ¼ zip is a must have! It's the perfect weight to use as a layering piece as well as all by itself. For a professional look or a sporty vibe. See - we told you it was perfect!

- 100% Polyester, 4oz/138gsm
  - Mens: ¼ zip / Ladies: ½ zip
  - Jersey fabric
  - Reebok logo on bottom hem
  - Machine washable
- Mens 7265: S-6XL | TALL: LT, XLT & 2XLT in all colors
- Ladies 7266: S-4XL



	1-23	24-143	144-999	1000+
	\$30.98	\$28.98	\$26.98	\$24.98
Upcharges per item: 2XL+ \$2.00   3XL+ \$4.00   4XL+\$6.00   5XL+ \$8.00   LT+ \$2.00   XLT+ \$4.00   2XLT+ \$8.00 (A)				



Jersey performance fabric to keep you cool & dry





# 7260-7261



## Reebok Crossover

A Reebok ¼ zip everyone will love with its SNAG RESISTANT, plaited birdseye mesh layer and YKK front zipper. You can dress it up or wear it casually to the gym or lounge around. No matter the occasion, you'll be cool and comfortable in this stylish heathered piece.

- 100% Polyester, 4.8oz/160gsm
- Playdry® moisture-wicking fabric
- YKK zipper, side fashion pocket, self-fabric mock neck
- Reebok reflective heat transfer along right side seam
- Machine washable
- Ladies: Fashionable thumbhole

Mens 7260: XS-5XL

Ladies 7261: S-4XL



Heather  
Charcoal  
050



Heather  
Charcoal  
050



Heather  
Navy  
466



Heather  
Black  
578



Heather  
Red  
915



Heather  
Black  
578



	1-23	24-143	144-999	1000+
	\$50.98	\$48.98	\$46.98	\$44.98

Upcharges per item: 2XL+ \$2.00 | 3XL+ \$4.00 | 4XL+\$6.00 | 5XL+ \$8.00

(A)

# 3561-3562

dunbrøke  
SINCE 1939

## Legend

The Legend falls nothing short of just that. The jersey, performance fabric is just the right amount of soft and comfort to be a staple in your wardrobe.

-100% Polyester, 4oz/138gsm

-Mens: ¼ zip / Ladies: ½ zip

-Jersey fabric

-Machine washable

Mens 3561: S-5XL | TALL: LT, XLT & 2XLT in all colors

Ladies 3562: S-4XL



dunbrøke SINCE 1939	1-23	24-143	144-999	1000+
	\$25.98	\$23.98	\$21.98	\$19.98
Upcharges per item: 2XL+ \$2.00   3XL+ \$4.00   4XL+\$6.00   5XL+ \$8.00   LT+ \$2.00   XLT+ \$4.00   2XLT+ \$8.00 (A)				





Red  
008

White  
026

3555-3556

dunbrooke  
SINCE 1939

Portal

What's a SNAG RESISTANT family without a ¼ zip to finish it off? The performance fabric is the perfect weight to layer on those crisp fall days or rock it with dress pants, jeans or athletic attire. Add some fashionable thumbholes to the ladies version and you have yourself the perfect pair of ¼ zips.

- 100% Polyester interlock, 5oz/170gsm
  - D-Dri moisture-wicking fabric
  - Contrast color zippers & open hem
  - Machine washable
  - Ladies: Fashionable thumbholes
- Mens 3555: S-5XL, LT, XLT & 2XLT in all colors except Red  
Ladies 3556: S-4XL



A row of six Portal ¼ zip sweatshirts in different colors: Royal (003), Navy (004), Red (008), Black (017), White (026), and Graphite (904). A smaller version of the Royal (003) sweatshirt is shown in front of the White (026) one.

dunbrooke SINCE 1939	1-23	24-143	144-999	1000+
	\$34.98	\$32.98	\$30.98	\$28.98
Upcharges per item: 2XL+ \$2.00   3XL+ \$4.00   4XL+\$6.00   5XL+ \$8.00   LT+ \$2.00   XLT+ \$4.00   2XLT+ \$8.00 (A)				



# Reebok Cycle

No activity is too big or too small for this Reebok Playdry® jersey knit performance tee. Whether you're lounging around the house or taking a run, the soft feel and moisture wicking fabric won't let you down.

- 100% Polyester, 4oz/138gsm
- Jersey fabric
- Reflective Reebok heat transfer on left sleeve
- Machine washable
- Ladies: V-neck collar

Mens 7131: S-5XL

Ladies 7132: S-4XL

7131-7132



Reebok	1-23	24-143	144-999	1000+
	\$18.98	\$16.98	\$14.98	\$12.98
Upcharges per item: 2XL+ \$2.00   3XL+ \$4.00   4XL+\$6.00   5XL+ \$8.00 (A)				

# 7133

Reebok



## Reebok Pacer

The Reebok Pacer is the long-sleeve companion to the Cycle. The Reebok Playdry® jersey knit material will keep you cool and dry no matter what you're up to.

-100% Polyester, 4oz/138gsm

-Jersey fabric

-Reflective Reebok heat transfer on bottom right hem

-Machine washable

7133: XS-5XL



1-23	24-143	144-999	1000+
\$20.98	\$18.98	\$16.98	\$14.98

Upcharges per item: 2XL+ \$2.00 | 3XL+ \$4.00 | 4XL+\$6.00 | 5XL+ \$8.00 (A)



# Reebok Marathon

You'll be yelling 'LET'S DO THIS!' in this stylish tee. The Reebok Marathon is the perfect weight for a long-sleeve performance tee while the heathered Playdry® fabric wicks away moisture keeping you cool and dry.

- 100% Polyester, 4oz/138gsm
- Heathered jersey fabric
- Reflective Reebok heat transfer on bottom hem
- Machine washable

7126: XS-5XL



Reebok	1-23	24-143	144-999	1000+
	\$21.98	\$19.98	\$17.98	\$15.98
Upcharges per item: 2XL+ \$2.00   3XL+ \$4.00   4XL+\$6.00   5XL+ \$8.00 (A)				



# 7122-7124



## Reebok Endurance

This heather, Reebok Playdry® tee lives up to its name with its moisture wicking properties and soft hand jersey fabric. You'll be ready to conquer whatever life throws at you.

- 100% Polyester, 4oz/138gsm
  - Heathered jersey fabric
  - Reflective Reebok heat transfer left sleeve
  - Machine washable
  - Ladies: V-neck collar
- Mens 7122: S-5XL  
Ladies 7124: XS-4XL



Heather Forest 642

Heather Purple 210



1-23	24-143	144-999	1000+
\$19.98	\$17.98	\$15.98	\$13.98

Upcharges per item: 2XL+ \$2.00 | 3XL+ \$4.00 | 4XL+\$6.00 | 5XL+ \$8.00 (A)





5135-Tropic

dunbrøke  
SINCE 1939



# JACKETS

3544/3545

Alberta **NEW**

5135

Tropic **NEW**

8027/8028

Hurricane

8036/8037

Cyclone

8530/8531

Olympic

5215/5216

Apex

5250/5251

Sonoma

5208/5209

Softshell

5270/5271

Zephyr

8009

Alpha

8019

Archer

8024

Pathfinder

8025/8026

Explorer

8174

Journey

8496

Craftsman

9516

Legacy

8058

Triumph

8200

Dakota

7208/7209

Reebok Softshell

5411

Decoy

5428

Hunter

5436

Ranger

# 3544-3545

dunbrooke  
SINCE 1939

## NEW

### Alberta

A wardrobe isn't complete without a puffer vest. The Alberta has just the right amount of puff to keep your core warm while offering a sleek silhouette and extremely soft hand.

- Shell Lining: 100% Nylon 380T
- Fill/Padding: 100% Polyester, 5oz/180gsm
- Side zipper pockets
- Mens 3544: S-5XL
- Ladies 3545: S-4XL



Black  
017

Navy  
004

Black  
017

Graphite  
904

Navy  
004

dunbrooke SINCE 1939	1-23	24-143	144-999	1000+
	\$43.98	\$41.98	\$39.98	\$37.98
Upcharges per item: 2XL+ \$2.00   3XL+ \$4.00   4XL+\$6.00   5XL+ \$8.00 (A)				





Navy  
004



Navy  
004



# 5135

dunbrøke  
SINCE 1939

## NEW

### Tropic

With the weather always being unpredictable, the Tropic has you covered. This light-weight, **PACKABLE** and **WATER-PROOF** jacket is easy to store in most bags or in hand to bring along for any outing - work, games, school, workout or even just a walk. The seam sealed fabric and C0-DWR coating will protect you from the rain so you have one less worry.

- Outer Shell: 100% Recycled Nylon
- PU coating, 5000mm and 3000mvp C0-DWR
- Inside Lining: 100% Polyester Mesh, 2.5oz, 85gsm
- Seam sealed **WATERPROOF** breathable fabric
- Attached, adjustable hood
- Adjustable drawcord hem
- PACKABLE**: Packs into its own hand pocket

5135: S-5XL

Ladies available Fall 2024



Black  
017

Graphite  
904

Navy  
004



dunbrøke  
SINCE 1939

1-23	24-143	144-999	1000+
\$67.98	\$65.98	\$63.98	\$59.98

Upcharges per item: 2XL+ \$2.00 | 3XL+ \$4.00 | 4XL+\$6.00 | 5XL+ \$8.00

(A)

8027-8028

dunbroke  
SINCE 1939

Hurricane

While we can't change the weather, we can protect you on those dreary days with our Hurricane! This light weight, fashionable heather/solid jacket will shield you from the wind and rain while making you look good all at the same time. We've also added a tech zippered pocket on the left sleeve for your earbuds or phone.

- 100% Polyester, 2.2oz/75gsm
- Wind and water resistant
- Welded zipper pocket on left sleeve and stretch binding cuffs
- Machine washable

Mens 8027: S-5XL

Ladies 8028: S-4XL



dunbroke SINCE 1939	1-23	24-143	144-999	1000+
	\$42.98	\$40.98	\$38.98	\$34.98
Upcharges per item: 2XL+ \$2.00   3XL+ \$4.00   4XL+\$6.00   5XL+ \$8.00 (A)				





Red/  
Heather  
862

Black/  
Heather  
861





Graphite  
904

Navy  
004



# 8036-8037

dunbrøke  
SINCE 1939

## Cyclone

For a light weight, wind and water resistant jacket, the Cyclone will blow you away. The panels on the front shoulder adds extra detail, separating this one from the average storm without a name.

-100% Polyester, 2.8oz/95gsm

-Wind and water resistant

-Elastic cuff and hem along with attached hood

-Machine washable

Mens 8036: S-5XL

Ladies 8037: S-4XL



dunbrøke SINCE 1939	1-23	24-143	144-999	1000+
	\$43.98	\$41.98	\$39.98	\$35.98
Upcharges per item: 2XL+ \$2.00   3XL+ \$4.00   4XL+\$6.00   5XL+ \$8.00 (A)				

# 8530-8531

dunbroke  
SINCE 1939

## Olympic

A wind and water resistant lightweight jacket is something everyone needs in their closet. A coordinating color dual stripe across the front makes the Olympic a little more trendy. Pretty certain we've hit gold on this one.

- 100% Polyester, 2.9oz/95gsm
- Wind and water resistant
- Adjustable drawcord hem and elastic cuffs
- Machine washable
- Ladies: Hood

Mens 8530: S-5XL | TALL: XLT & 2XLT in Navy, Black, Graphite

Ladies 8531: S-4XL



dunbroke SINCE 1939	1-23	24-143	144-999	1000+
	\$34.98	\$32.98	\$30.98	\$26.98

Upcharges per item: 2XL+ \$2.00 | 3XL+ \$4.00 | 4XL+\$6.00 | 5XL+ \$8.00 | XLT+ \$4.00 | 2XLT+ \$8.00 (A)





# 5215-5216

dunbrøke  
SINCE 1939

## Apex

We LOVE our softshells and you guys do too, which is why we added the Apex to our line. This softshell is light in weight but still has the 4-way stretch, 2-ply material and wind and water resistant properties. You can literally wear this thing anywhere and be comfortable!

- 100% Polyester, 5.6oz/190gsm
- 100% Polyester mesh interior
- 4-way stretch, 2-ply, light, wind and water resistant softshell
- Open hem with drawcord and elastic bound cuffs
- Machine washable

Mens 5215: S-5XL | TALL: LT, XLT & 2XLT

Ladies 5216: S-4XL



dunbrøke  
SINCE 1939

	1-23	24-143	144-999	1000+
	\$44.98	\$42.98	\$40.98	\$36.98
Upcharges per item: 2XL+ \$2.00   3XL+ \$4.00   4XL+\$6.00   5XL+ \$8.00   LT+ \$2.00 XLT+ \$4.00   2XLT+ \$8.00 (A)				

# 5250-5251

dunbrøke  
SINCE 1939

## Sonoma

When you need reliability and want comfort, look no further than the Sonoma softshell. The 4-way stretch, 2-ply bonded, wind and water resistant fabric fulfills those wants and needs with ease.

The next best thing about this mid-weight softshell is its value – so much bang for your buck.

- 100% Polyester, 9oz/300gsm

- 4-way stretch, 2-ply bonded, wind and water resistant softshell

- YKK zippers on front, right vertical sleeve pocket and side pockets

- Machine washable

Mens 5250: S-6XL | TALL: LT, XLT & 2XLT in Navy, Black, Graphite

Ladies 5251: S-4XL



dunbrøke  
SINCE 1939

1-23

24-143

144-999

1000+

\$47.98

\$45.98

\$43.98

\$39.98

Upcharges per item: 2XL+ \$2.00 | 3XL+ \$4.00 | 4XL+\$6.00 | 5XL+ \$8.00 | 6XL+ \$10.00 | LT+ \$2.00 | XLT+ \$4.00 | 2XLT+ \$8.00 (A)





Forest  
610

Red  
008

# 5208-5209

dunbroke  
SINCE 1939

## Softshell

This 4-way stretch, 2-ply bonded, wind and water resistant material makes up a true fan favorite. The Softshell. The polar fleece under the arms allows for breathability while ensuring you're warm. YKK zippers on the chest and side pockets add the extra quality we all look for in a jacket.

-97% Polyester/3% Spandex, 9oz/300gsm

-Breathable softshell fabric

-Polar fleece under arms

-Vertical chest pocket, side zipper pockets, YKK zippers

-Machine washable

Mens 5208: S-5XL

Ladies 5209: S-4XL



dunbroke  
SINCE 1939

1-23	24-143	144-999	1000+
\$69.98	\$67.98	\$65.98	\$61.98

Upcharges per item: 2XL+ \$2.00 | 3XL+ \$4.00 | 4XL+ \$6.00 | 5XL+ \$8.00 (A)



# 5270-5271

dunbrøke  
SINCE 1939

## Zephyr

Sleek and refined is how we describe our Zephyr. The mélange heather contrasting detail across the chest and down the inside of the arms paired with the already adored 4-way stretch, 2-ply bonded softshell material soars this one to the top of everyone's love it list.

- 100% Polyester, 9oz/300gsm
- Mélange heather contrasting
- 4-way stretch, 2-ply bonded
- Zippered hidden hood
- Wind and water resistant softshell
- Hidden hood & zippered chest pocket

Mens 5270: S-5XL

Ladies 5271: S-4XL

Graphite/  
Heather  
541

Navy/  
Heather  
192

Graphite/  
Heather  
541

Black/  
Heather  
731

Black/  
Heather  
731

dunbrøke  
SINCE 1939

	1-23	24-143	144-999	1000+
	\$71.98	\$69.98	\$67.98	\$63.98

Upcharges per item: 2XL+ \$2.00 | 3XL+ \$4.00 | 4XL+\$6.00 | 5XL+ \$8.00

(A)

# 8009

dunbroke  
SINCE 1939

## Alpha

Softshell meets fleece. This comfortable and casual jacket is the ideal layered look and feel without all the bulk. The vest portion will keep your body warm while the fleece arms and hood adds softness and comfort for any event or outing. Be prepared to fall in love!

-100% Polyester

-Body: 9oz, 4-way stretch, 2-ply bonded softshell, wind and water resistant

-Hood & Sleeves: 7.5oz, brushed interior with reverse stitching

-Machine washable

8009: XS-6XL | TALL: LT, XLT & 2XLT in all colors



dunbroke  
SINCE 1939

1-23	24-143	144-999	1000+
\$59.98	\$57.98	\$55.98	\$51.98

Upcharges per item: 2XL+ \$2.00 | 3XL+ \$4.00 | 4XL+\$6.00 | 5XL+ \$8.00 | 6XL+ \$10.00 | LT+ \$2.00 XLT+ \$4.00 | 2XLT+ \$8.00 (A)





# 8019

dunbrøke  
SINCE 1939

## Archer

We took our popular and well loved Sonoma softshell and made it into a vest. It's the perfect layering piece with its 4-way stretch, 2-ply bonded, wind and water resistant fabric.

-100% Polyester, 9oz/300gsm

-Mid-weight softshell vest

-4-way stretch, 2-ply bonded, wind and water resistant, softshell vest

-Side zipper pockets, double stitched open hem

-Machine washable

8019: XS-6XL | TALL: LT, XLT & 2XLT in all colors



Black  
017

dunbrøke  
SINCE 1939

1-23

\$43.98

24-143

\$41.98

144-999

\$39.98

1000+

\$37.98

Upcharges per item: 2XL+ \$2.00 | 3XL+ \$4.00 | 4XL+\$6.00 | 5XL+ \$8.00 | 6XL+ \$10.00 | LT+ \$2.00 XLT+ \$4.00 | 2XLT+ \$8.00 (A)

# 8024

dunbrøke  
SINCE 1939

## Pathfinder

With a blend of the Teflon coated material and a polyester shell we have the Pathfinder. It takes the amazing properties of water resistant to a new level of fashion by adding the solid colored shell to the top portion and a heathered bottom

- 100% Polyester, 7.5oz
- Teflon coated tech fleece with polyester shell (2.8oz)
- Zipper pockets with adjustable cuffs
- Machine Washable.

8024 S-5XL



**Teflon Shield+**  
fabric protector

Teflon™ fabric protector provides the invisible barrier consumers need to help protect against stains, spills and other mishaps. Products treated with Teflon™ fabric protector offer convenience, performance and protection.



dunbrøke  
SINCE 1939

1-23	24-143	144-999	1000+
\$49.98	\$47.98	\$45.98	\$43.98

Upcharges per item: 2XL+ \$2.00 | 3XL+ \$4.00 | 4XL+\$6.00 | 5XL+ \$8.00 (A)



# 8025-8026

dunbrøke  
SINCE 1939

## Explorer

By adding a Teflon coating to the material, it adds a strong barrier protecting it from water. The Explorer is our full-zip jacket in the Teflon coated family. The mens offers a front upper half polyester shell while the ladies offers a full front polyester shell, giving them the perfect amount of flair to wear for sporty events or to the office.

- 100% Polyester, 7.5oz
- Teflon coated tech fleece with polyester shell
- Zippered side pockets with adjustable pockets
- Machine washable

Mens 8025: S-5XL

Ladies 8026: S-4XL



**Teflon Shield+**  
fabric protector

Teflon™ fabric protector provides the invisible barrier consumers need to help protect against stains, spills and other mishaps. Products treated with Teflon™ fabric protector offer convenience, performance and protection.

Heather  
Black  
578

Heather  
Navy  
466

Heather  
Charcoal  
050

Heather  
Royal  
916

Heather  
Red  
915

Heather  
Navy  
466

Heather  
Forest  
642

Heather  
Black  
578

Heather  
Royal  
916

dunbrøke  
SINCE 1939

1-23	24-143	144-999	1000+
\$51.98	\$49.98	\$47.98	\$45.98

Upcharges per item: 2XL+ \$2.00 | 3XL+ \$4.00 | 4XL+\$6.00 | 5XL+ \$8.00

(A)

## Journey

The light weight cotton canvas jacket is sure to add the perfect amount of weight and warmth for the in-between brisk weather as well as protect you from the elements with its wind and water resistant properties. The adjustable snap cuffs help keep the sleeves in place while the zipper pockets keep you from losing your belongings while on the go.

- 59% Cotton/39% Polyester/2% Spandex, 8oz
  - Tri-Blend light weight cotton canvas jacket
  - Water and wind resistant
  - Rich chest pocket and inside pocket
  - Mock neck collar
  - Snap adjustable cuffs
  - Two lower front pockets with zipper closure
- 8174: S-5XL



dunbrøke SINCE 1939	1-23	24-143	144-999	1000+
	\$71.98	\$69.98	\$67.98	\$63.98
Upcharges per item: 2XL+ \$2.00   3XL+ \$4.00   4XL+\$6.00   5XL+ \$8.00 (A)				



# Craftsman

Thinking of warmth, we know thermals are pretty amazing. So for the Craftsman, we took a heavy duty outer shell and lined it with polythermal material. Not only will this jacket help lock in your body heat, it comes in several colors with contrast color liners, all of which have deep open pouch pockets.

-80% Cotton/20% Polyester, 10.5oz/355gsm (outer)

-100% Polythermal lining, 7oz/238gsm (inner)

-Brass YKK zipper

-Machine washable

8496: S-5XL

# 8496

dunbrøke  
SINCE 1939



dunbrøke SINCE 1939	1-23	24-143	144-999	1000+
	\$69.98	\$67.98	\$65.98	\$61.98
Upcharges per item: 2XL+ \$2.00   3XL+ \$4.00   4XL+\$6.00   5XL+ \$8.00 (A)				

## Legacy

Support your favorite school or team using the Legacy with its detail contrast color stitching. The nylon outer shell and poly/ cotton liner is just the right amount of warmth and comfort to top it off.

-100% Nylon, 2.1oz/72gsm (outer)

-92% Polyester/8% Cotton, 6oz/200gsm (inner)

-Wind and water resistant

-Storm flap, elastic bound cuff, attached fleece lined hood

9516: S-6XL | TALL: LT, XLT & 2XLT in all colors



dunbrøke  
SINCE 1939

1-23	24-143	144-999	1000+
\$59.98	\$57.98	\$55.98	\$51.98

Upcharges per item: 2XL+ \$2.00 | 3XL+ \$4.00 | 4XL+\$6.00 | 5XL+ \$8.00 | LT+ \$2.00 XLT+ \$4.00 | 2XLT+ \$8.00 (A)



# 8058

dunbrøke  
SINCE 1939

## Triumph

A true Triumph over all – this all season jacket is a must for any and all. Its wind and water resistant capabilities, along side the fleece lining is all you'll ever need.

- 100% Nylon, 7oz/238gsm (outer)
- Anti-pill fleece, 5oz/170gsm (inner)
- YKK zipper with fabric pull
- Front and back cape for decoration
- Side zipper pockets, interior security pocket, drawcord hem
- Machine washable

8058: S-5XL | TALL: LT, XLT & 2XLT in all colors



dunbrøke  
SINCE 1939

1-23	24-143	144-999	1000+
\$59.98	\$57.98	\$55.98	\$51.98

Upcharges per item: 2XL+ \$2.00 | 3XL+ \$4.00 | 4XL+ \$6.00 | 5XL+ \$8.00 | LT+ \$2.00 | XLT+ \$4.00 | 2XLT+ \$8.00 (A)

Dakota

When you're working hard, the last thing you want to worry about is what you're wearing. The Dakota has a 12oz cotton canvas outer shell and a 5oz quilt liner to keep you warm and hold up against the wear and tear of your daily endeavors.

- 100% Cotton canvas, 12oz/406gsm (outer)
- 100% Polyester quilt lining, 5oz/170gsm (inner)
- Wind and water resistant
- Brass YKK zipper
- Heavy duty cuffs and waist band with Lycra®
- Machine washable

8200: S-6XL | TALL: LT, XLT & 2XLT in all colors



Washed  
Black  
017



Coffee  
022



Washed  
Bark  
288

Coffee  
022

dunbrøke SINCE 1939	1-23	24-143	144-999	1000+
	\$89.98	\$87.98	\$85.98	\$81.98
Upcharges per item: 2XL+ \$2.00   3XL+ \$4.00   4XL+\$6.00   5XL+ \$8.00   6XL+ \$10.00   LT+ \$2.00 XLT+ \$4.00   2XLT+ \$8.00 (A)				



# 7208-7209



## Reebok Softshell

What do you get when you take a softshell, Reebok Playshield® properties and spandex and mix them all together? You get our Reebok Softshell, that's what! The 4-way stretch, 2-ply bonded, wind and water resistant material is all you'll ever need. Check it out for yourself!

- 97% Polyester/3% Spandex, 9oz/300gsm
- Reebok Playshield® breathable fabric
- Polar fleece under arms
- Reebok embroidered on left bicep
- Vertical chest pocket, side zipper pockets, YKK zippers
- Machine washable

Mens 7208: S-5XL

Ladies 7209: S-4XL



Graphite  
904

Black  
017

Graphite  
904

Navy  
004

Black  
017



	1-23	24-143	144-999	1000+
	\$85.98	\$83.98	\$81.98	\$77.98

Upcharges per item: 2XL+ \$2.00 | 3XL+ \$4.00 | 4XL+\$6.00 | 5XL+ \$8.00

(A)

# 8023

dunbrøke  
SINCE 1939

## Coaches

The Coaches jacket; a timeless classic made up of 100% polyester with a polyester tricot lining and metal snap closures. We consider it a staple for any athletic event and a vintage fashion statement.

- 100% Polyester, 3oz/100gsm
- Polyester tricot lining
- Wind and water resistant
- Front slash pockets
- Machine washable

8023: S-5XL



dunbrøke SINCE 1939	1-23	24-143	144-999	1000+
	\$32.98	\$30.98	\$28.98	\$24.98
Upcharges per item: 2XL+ \$2.00   3XL+ \$4.00   4XL+\$6.00   5XL+ \$8.00 (A)				

# 5411

REALTREE<sup>®</sup> Xtra

## Decoy

This isn't a fake! This one is real and you're going to dig it! A colorblock full-zip fleece hoodie with Realtree accents on the side panels, under sleeve and hood lining. What's not to like?!

- 100% Polyester, 7.5oz/255gsm
- Brushed inner layer
- Reverse stitching
- Machine washable

5411: S-5XL



REALTREE <sup>®</sup> Xtra	1-23	24-143	144-999	1000+
	\$46.98	\$44.98	\$42.98	\$40.98
Upcharges per item: 2XL+ \$2.00   3XL+ \$4.00   4XL+\$6.00   5XL+ \$8.00 (A)				





Realtree Xtra  
767

# 5428



## Hunter

A Realtree Xtra camo patterned, colorblock, softshell jacket is a must for any hunting trip or outdoor activity.

-97% Polyester/3% Spandex, 7.8oz/265gsm

-Realtree Xtra camo pattern on front, sides and arm panels with black colorblocking

-4-way stretch, 2-ply bonded softshell jacket with YKK zippered right chest pocket

-Machine washable

5428: S-5XL

	1-23	24-143	144-999	1000+
	\$89.98	\$87.98	\$85.98	\$81.98
Upcharges per item: 2XL+ \$2.00   3XL+ \$4.00   4XL+\$6.00   5XL+ \$8.00 (A)				



5436



Ranger

To everyone that just loves a good camo pattern, this one is for you! Just like our Champion hoodie with a pouch pocket and reverse stitching, only we've added Realtree accents to the side panels, under sleeve and hood lining to give you a colorblock Realtree hoodie!

- 100% Polyester, 7.5oz/255gsm
- Brushed inner layer
- Machine washable

5436: S-5XL



	1-23	24-143	144-999	1000+
	\$44.98	\$42.98	\$40.98	\$38.98
Upcharges per item: 2XL+ \$2.00   3XL+ \$4.00   4XL+\$6.00   5XL+ \$8.00 (A)				





# 5490RT




## Sportsman-RealTree

Packable and seam sealed WATERPROOFING is what makes the Sportsman ideal for many occasions. It folds easily into its left pocket, allowing it to be carried about without the bulk. The waterproof and wind resistant material add to the ideal in keeping you dry and protected on windy days.

- 100% Polyester, 4oz/135gsm
- Rain runoff zippered pockets with storm flaps
- Roll-up hidden hood with tie cords
- YKK zippers, open bottom, drop tail with bungee and adjustable toggles
- Machine washable

5490: S-5XL

RealtreeXtra  
767

	1-23	24-143	144-999	1000+
	\$61.98	\$59.98	\$57.98	\$53.98

Upcharges per item: 2XL+ \$2.00 | 3XL+ \$4.00 | 4XL+ \$6.00 | 5XL+ \$8.00 (A)



**Terms:**

Terms are NET 30 and are subject to credit approval. We accept Visa, Mastercard, American Express and Discover.

**Return Authorization:**

Dunbrooke strives to make sure your order is processed accurately. If you find a discrepancy in your order a claim must be made by requesting a return authorized within 15 days from receipt of goods. The request must reference the invoice number. A proper return authorization from Dunbrooke is required before any returned goods will be accepted. Returns are not allowed on decorated or custom goods. We reserve the right to charge 15% re-stocking fee and any applicable shipping charges on all returned or refused orders (except damaged or defective goods). There is a \$20.00A minimum restocking fee.

Dunbrooke is a proud member of PPAI Code of Conduct Policies. Dunbrooke works within the guidelines of applicable U.S. federal and state safety requirements, include the Safe Drinking Water and Toxic Enforcement Act of 1986, also known as California Proposition 65.\*\*Catalog pricing subject to change

**Decoration**

Dunbrooke offers imprinting options to fit your decoration needs such as:  
Embroidery and Heat Transfers

**Heat Transfer**

Pricing is available via our website and by contacting customer service for a quote and/or pricing templates.

**Direct Embroidery:**

One-time tape charge of \$40.00(A) for designs up to 8,000 stitches  
Embroidery orders of 8,001+ stitches add an additional \$.50(A) per 1,000 stitches for run charges Add \$10.00(A) per 1,000 stitches for tape charges  
Individual personalization using stock script or block letters is \$12.00(A) and no tape charge. Please submit detailed artwork to: [decodept@dunbrooke.com](mailto:decodept@dunbrooke.com)

**Embroidery Running Charges (Up to 8,000 stitches)**

Quantity:	1-5	6-11	12-23	24-999	1000+
Pricing:	\$13.00(A)	\$7.00(A)	\$6.50(A)	\$6.00(A)	\$5.00(A)

Every embroidery order is trimmed, steamed, and folded with pride.  
Polybag is available for \$.50(A) per piece.

**The Fine Print****Handling/Drop Ship-charge:**

\$9.00(A) per address minimum plus freight charges will be added to each invoice  
International Shipping: Due to product origin issues, all orders shipping outside of the United States must be handled through your freight forwarders.



Style	Name	Page #
1020	Adult Oxford Solid Flannel Lined	84
2450	Adult Oxford Solid Quilt Lined	84
1010	Adult Satin Solid Flannel Lined	84
2460	Adult Satin Solid Quilt Lined	84
3544	Alberta	55
3545	Alberta-Ladies'	55
3542	All Star 1/4 Zip Tech Fleece	41
8009	Alpha Jacket	69
5215	Apex Softshell Jacket	64
5216	Apex Softshell Jacket-Ladies'	64
8418	Apprentice	32
8019	Archer Softshell Vest	70
3105	Avenger	14
3106	Avenger-Ladies'	14
3520	Cascade 1/4 Zip Fleece w/Pouch Pocket	38
5118	Cavalier thermal	35
8436	Champion Pullover Tech Fleece-RealTree Xtra	28
8436	Champion Pullover Tech Fleece-Solid colors	28
1130	Coaches Flannel Lined Windbreaker Jacket	83
2340	Coaches Quilt Lined Windbreaker Jacket	83
8023	Coaches Windbreaker	79
3153	Contour Performance 3/4 Slv length Polo-Ladies'	17
3152	Contour Performance L/S Polo	17
8496	Craftsman Workwear Jacket	74
8036	Cyclone Lightweight Hooded Jacket	62
8037	Cyclone Lightweight Hooded Jacket-Ladies'	62
8200	Dakota Heavyweight Jacket	77
5411	Decoy Fleece Fullzip Hoodie with Camo Accent	79
8450	Defender	27
3562	Dunbrooke Legend Lightweight 1/2 Zip-Ladies'	47
3561	Dunbrooke Legend Lightweight 1/4 Zip	47
3331	Eclipse Polo	11
3333	Eclipse Polo-Ladies	11
3170	Eco Title Polo	10
3171	Eco Title Polo-Ladies'	10
3150	Edge Performance Polo	16
3151	Edge Performance Polo-Ladies'	16
8025	Explorer	72
8026	Explorer-Ladies'	72
3515	Hayden Fleece Jacket	37
3514	Hayden Fleece Jacket-Ladies'	37
3557	Houston Fleece Vest	40
3558	Houston Fleece Vest-Ladies'	40
5428	Hunter Softshell Jacket	80
8027	Hurricane Ultra Lightweight Full zip jacket	59
8028	Hurricane Ultra Lightweight Full zip jacket-Ladies'	59
8174	Journey	73
7012	Ladies Reebok Cypress Polo	8
7307	Ladies Reebok Earth Polo	3
9516	Legacy Fleece Lined Jacket w/ Contrast stitching	75
5116	Maverick henley	34
5120	Montana hooded thermal	36
8530	Olympic Jacket	63

USA MADE STYLES ARE NO LONGER AVAILABLE.  
PLEASE CONTACT YOUR SALES REP FOR MORE INFORMATION

Style	Name	Page #
8531	Olympic Jacket-Ladies'	63
5006	Pacific	33
5007	Pacific-Ladies'	33
8024	Pathfinder	71
1140	Poplin Flannel Jacket	83
2420	Poplin Quilt Jacket	83
3555	Portal 1/4 Zip Pullover w/ chest pocket	49
3556	Portal 1/4 Zip Pullover w/chest pocket-Ladies'	49
5436	Ranger Fleece Pullover with Camo Accent	81
7439	Reebok Circuit 1/2 Zip Pullover-Ladies'	44
7438	Reebok Circuit 1/4 Zip Pullover	44
7131	Reebok Cycle Solid Performance Tees	50
7132	Reebok Cycle Solid Performance Tees-Ladies'	50
7011	Reebok Cypress Polo	8
7046	Reebok Daybreak Full Zip Fleece	23
7306	Reebok Earth Polo	3
7003	Reebok Echo Heather Hoodie	21
7122	Reebok Endurance Heather Performance Tees	53
7124	Reebok Endurance Heather Performance Tees-Ladies'	53
7006	Reebok Freestyle Heather Fleece Jacket	26
7007	Reebok Freestyle Heather Fleece Jacket-Ladies'	26
7266	Reebok Icon Lightweight 1/2 Zip-Ladies'	45
7265	Reebok Icon Lightweight 1/4 Zip	45
7126	Reebok Marathon Heather Performance L/S Tees	52
7051	Reebok Max	20
7133	Reebok Pacer Long Sleeve Performance Tee	51
7290	Reebok Playdry® Athletic Polo	11
7291	Reebok Playdry® Athletic Polo-Ladies	11
7261	Reebok PLAYDRY® Crossover Heather Pullover-Ladies'	46
7260	Reebok PLAYDRY® Heather Pullover	46
7280	Reebok Playdry® X-Treme Polo	6
7281	Reebok Playdry® X-Treme Polo-Ladies'	6
7208	Reebok Softshell Playshield® Jacket	78
7209	Reebok Softshell Playshield® Jacket-Ladies'	78
7045	Reebok Weekender Pullover Fleece	22
5208	Softshell Jacket	67
5209	Softshell Jacket-Ladies'	67
5250	Sonoma Softshell Jacket	65
5251	Sonoma Softshell Jacket-Ladies'	65
5490	Sportsman Waterproof Jacket-RealTree® Xtra	82
3560	Team Polo	15
3332	Team Polo-Ladies'	15
7700	Tempo PLAYDRY® Heather Polo	5
7701	Tempo PLAYDRY® Heather Polo-Ladies	5
8175	The Shag	31
8058	Triumph Jacket	76
8411	Trophy Full Zip Tech Fleece-RealTree Xtra	29
8411	Trophy Full Zip Tech Fleece-Solid colors	29
5135	Tropic Waterproof Jacket	58
2304	Workhorse Canvas Jacket	83
5270	Zephyr Softshell Jacket with Heather accent	68
5271	Zephyr Softshell Jacket with Heather accent-Ladies'	68

NEW STYLES ARE HIGHLIGHTED IN RED

Index by Name

2025  
dunbrooke  
featuring **Reebok**

---

ASI 50930 PPAI 111864 SAGE 50935