

DRUM-LINE^{INC.}

The Complete Source for Paper Products



Catalog Supplement
Prices good until
12/31/21.



www.drum-line.com

Journal Planners
Academic Planners
Custom Photo Calendars



Journal Planners

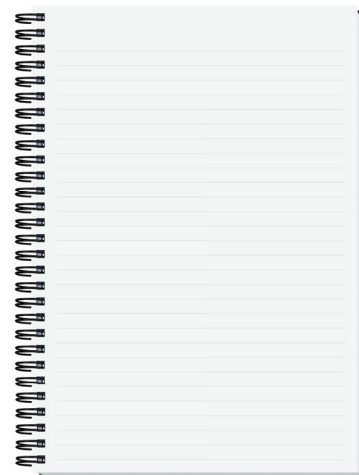


Colors shown are a printed representation. Request swatch for exact color.



Additional cover colors
available at
drum-line.com

Hybrid planner
includes ruled
sheets!



Cover: Sturdy heavyweight paperboard or poly, foil stamped in one standard color.

Back Cover (-PS): Black heavyweight pen safe back with elastic closure/bookmark and pen loop. A free Dynamic Pen comes inserted in loop. Choose black, frost, blue, or red.

Inside Sheets: 60 lb. white offset, 14 months (December - January) followed by 50 sheets printed with light gray rules on both sides.

Binding: Wire-O bound on left side in black. Pewter or white upon request.

Standard Foil Colors: Gloss-Black, White, Ivory, Red, Green, Blue, Navy, Orange, Pink; Metallic-Silver, Gold, Copper, Red, Green, Blue.

item	size	imprint area	50	100	250	500
MFPDJ1	7 x 10	18 sq. in.	13.11	12.69	11.82	11.20
MFPDJ1-PS	7 x 10	18 sq. in.	14.78	14.36	13.49	12.87

Plate charge: \$60.00 per foil color (v)

(4R)

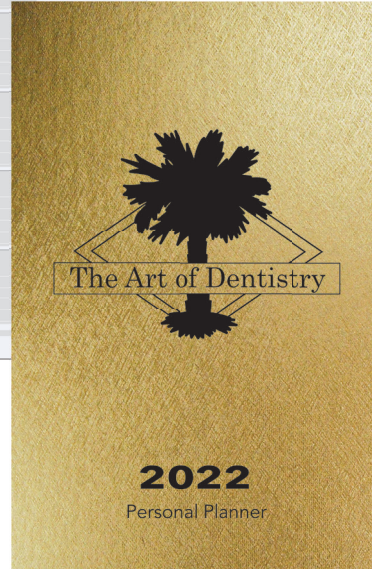
Monthly Planners



AMERICAN SUBCONTRACTORS ASSOCIATION
San Antonio Chapter

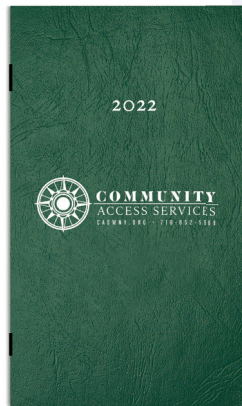


MFP24 - 8 1/4 x 10 3/4



MFP1 - 6 1/2 x 10

Gold (613)



MPC2 - 3 5/8 x 6 1/4

Green (111)



Colors shown are a printed representation. Request swatch for exact color.

Full Color

Cover: White 10 pt. coated one side, printed full color with clear coat on outside front and/or back. Front and back copy can be same or different. Back will be blank unless otherwise requested.

Inside Sheets: Monthly calendar view, white offset printed gray ink on two sides. No customization available. Includes 14 months (December – January).

Binding: Bound on the left side with two staples. Square corners.

item	size	100	250	500	1000
MPC1	3 5/8 x 6 1/4	n/a	2.76	2.29	2.06
MFP14	6 1/2 x 10	3.91	3.59	3.27	2.94
MFP24	8 1/4 x 10 3/4	4.20	3.90	3.53	3.22

(4R)

Foil Stamped

Cover: Flexible leatherette or textured paper, foil stamped in one standard color. Metro leather-like covers available blind debossed or foil stamped.

Inside Sheets: Monthly calendar view, white offset printed gray ink on two sides. No customization available. Includes 14 months (December – January).

Binding: Bound on the left side with two staples. Square corners.

Standard Foil Colors: Gloss-Black, White, Ivory, Red, Green, Blue, Navy, Orange, Pink; Metallic-Silver, Gold, Copper, Red, Green, Blue.

item	size	imprint area	100	250	500	1000
MPC2	3 5/8 x 6 1/4	3 x 5	n/a	2.76	2.29	2.06
MFP1	6 1/2 x 10	18 sq. in.	3.91	3.59	3.27	2.94
MFP2	8 1/4 x 10 3/4	18 sq. in.	4.20	3.90	3.53	3.22

(4R)

Plate charge: \$60.00 per foil color (v)

Time Managers



Colors shown are a printed representation. Request swatch for exact color.



* Monthly & Weekly Views All in One

TM8 - 8 1/4 x 10 5/8

Natural (307)

TM7-PS - 7 x 10

Meadow (301)

TM5 - 5 x 8

Black Linen (334)

Covers: Sturdy heavyweight stock, foil stamped in one standard color. See foil colors page 2.

Pen Safe Back Cover (-PS): Black heavyweight pen safe back with elastic closure/bookmark and pen loop. A free Dynamic Pen comes inserted in loop. Choose black, frost, blue, or red.

Inside Sheets: 14 months (December - January), monthly and weekly views printed in blue and gray on 60 lb. white offset with perforated page corners, reference pages, and white double pocket inserted in the back.

Binding: Wire-O on left side in black, pewter or white.

item	size	imprint area	50	100	250	500	1000
TM5	5 x 8	16 sq. in.	6.72	6.05	5.59	5.31	5.05
TM5-PS	5 x 8	16 sq. in.	8.39	7.72	7.26	6.98	6.72
TM7	7 x 10	18 sq. in.	10.66	9.60	8.85	8.44	7.99
TM7-PS	7 x 10	18 sq. in.	12.33	11.27	10.52	10.11	9.66
TM8	8 1/4 x 10 5/8	18 sq. in.	11.03	9.94	9.16	8.72	8.27
TM8-PS	8 1/4 x 10 5/8	18 sq. in.	12.70	11.61	10.83	10.39	9.94

Plate charge: \$60.00 per foil color (v)

(SR)



Deluxe Time Managers

• Deluxe Padded Covers

• Monthly & Weekly Views All in One

• Ribbon Marker



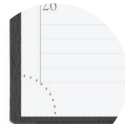
Colors shown are a printed representation. Request swatch for exact color.



• Handy pocket in back



• Concealed binding lays flat for easy writing



• Perforated corners for easy page marking



• Hamilton Refillable Time Manager
Available at drum-line.com

Covers: Deluxe padded covers with wrapped edges, foil stamped in one standard color or debossed. Chocolate (403), Thunder Gray (404) and Cobalt Blue (408) covers are available burnished, which means the cover changes to a darker shade when debossed.

Inside Sheets: 14 months (December - January), monthly and weekly views printed in blue and gray on 60 lb. white offset with perforated page corners, reference pages, ribbon marker and white double pocket inserted in the back.

Binding: Wire-O bound in black on left side, concealed by a wraparound cover.

item	size	imprint area	50	100	250	500	1000
TMD5	5 x 8	16 sq. in.	12.02	10.84	10.00	9.53	9.14
TMD7	7 x 10	18 sq. in.	17.53	16.24	15.30	14.73	14.22
TMD8	8 1/4 x 10 5/8	18 sq. in.	18.28	16.97	16.02	15.43	14.90

(SR)

Plate charge: \$60.00 per foil color (v)

Weekly Planners



Colors shown are a printed representation. Request swatch for exact color.



DC1F-PS - Flex Black (113)

DC1P - Poly Cherry Red (075)



DC14-PS - Full Color

Size: 5 1/4 x 8 1/4 **Foil Imprint Area:** 16 sq. in.

Poly Cover: 30 pt. poly front, foil stamped in one standard color. White heavyweight 24 pt. coated one side back.

Flex Covers: Navy, Green, Red, or Black leatherette, foil stamped in one standard color on front cover.

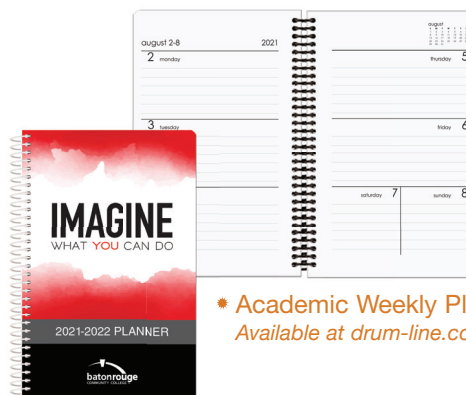
Full Color Cover: White 15 pt. coated one side, printed one to full color with clear coat. White 24 pt. back.

Pen Safe Back Cover (-PS): Black heavyweight back with elastic closure/bookmark and pen loop. A free Dynamic Pen comes inserted in loop. Choose Black, Blue, Red, or Frost.

Standard Foil Colors: Gloss-Black, White, Ivory, Red, Green, Blue, Navy, Orange, Pink; Metallic-Silver, Gold, Copper, Red, Green, Blue.

Inside Sheets: January - December week at a glance calendar sheets with space for notes.

Binding: Wire-O bound on left side in black, pewter, or white.



* Academic Weekly Planners
Available at drum-line.com

item	description	100	250	500	1000
DC1P	poly cover	5.86	5.26	5.07	4.97
DC1P-PS	poly cover with pen safe back	7.53	6.93	6.74	6.64
DC1F	flex cover	5.57	4.97	4.78	4.68
DC1F-PS	flex cover with pen safe back	7.24	6.64	6.45	6.35
DC14	full color	5.60	5.35	5.02	4.13
DC14-PS	full color with pen safe back	7.27	7.02	6.69	5.80

Plate Charge: \$60.00 per foil color (v)

(4R)



Academic Journal Planners



AFPDJ1 - 7 x 10

Red Cord (031)

Hybrid planner
includes ruled
sheets!



Colors shown are
a printed representation.
Request swatch for exact color.

Cover: Sturdy heavyweight paperboard or poly, foil stamped in one standard color. See foil colors on page 2.

Back Cover (-PS): Black heavyweight pen safe back with elastic closure/bookmark and pen loop. A free Dynamic Pen comes inserted in loop. Choose black, frost, blue, or red.

Inside Sheets: 60 lb. white offset, 14 months (July - August) followed by 50 sheets printed with light gray rules on both sides.

Binding: Wire-O bound on left side in black. Pewter or white upon request

Additional cover colors
available at
drum-line.com

item	size	imprint area	50	100	250	500
AFPDJ1	7 x 10	18 sq. in.	13.11	12.69	11.82	11.20
AFPDJ1-PS	7 x 10	18 sq. in.	14.78	14.36	13.49	12.87

Plate charge: \$60.00 per foil color (v)

(4R)

Academic Monthly Planners



Colors shown are
a printed representation.
Request swatch for exact color.



AFP2 - 8 1/4 x 10 3/4 Caramel (609)



AFP1 - 6 1/2 x 10 Purple (611)

• 14 Months!



AFP14 - 6 1/2 x 10

Foil Stamped

Cover: Flexible leatherette or textured paper, foil stamped in one standard color. Metro leather-like covers available blind debossed or foil stamped.

Inside Sheets: Monthly calendar view, white offset printed gray ink on two sides. No customization available. Includes 14 months (July-August).

Binding: Bound on the left side with two staples. Square corners.

item	size	imprint area	100	250	500	1000
AFP1	6 1/2 x 10	18 sq. in.	3.72	3.42	3.09	2.79
AFP2	8 1/4 x 10 3/4	18 sq. in.	4.03	3.71	3.38	3.06

(4R)

Plate charge: \$60.00 per foil color (v)

Full Color

Cover: White 10 pt. coated one side, printed full color with clear coat on outside front and/or back. Front and back copy can be same or different. Back will be blank unless otherwise requested.

Inside Sheets: Monthly calendar view, white offset printed gray ink on two sides. No customization available. Includes 14 months (July – August).

Binding: Bound on the left side with two staples. Square corners.

item	size	100	250	500	1000
AFP14	6 1/2 x 10	3.72	3.42	3.09	2.79
AFP24	8 1/4 x 10 3/4	4.03	3.71	3.38	3.06

(4R)

Custom Photo Tent Calendars



TC5 - 8 3/4 x 4

• 13 Custom Photos!

• Start any month

Item: TC4

Overall Size: 5 13/16 x 4 1/2

Photo Size: 3 x 2 15/16

Easel Imprint Area: 5 5/16 x 1 1/16

Flat Size for Mailing: 5 13/16 x 6 1/4

Item: TC5

Overall Size: 8 3/4 x 4

Photo Size: 5 5/8 x 3 7/8

Imprint Area: 2 7/8 x 1

Flat Size for Mailing: 8 3/4 x 5 3/4

Cover Sheet: Your photo printed full color on 80 lb. gloss cover.

Calendar Sheets: 80 lb. gloss text, 12 calendar sheets, front month at a glance and back month at a glance with room to write. 12 custom photos printed full color. Calendar in black only. Back of the last calendar sheet has a year at a glance calendar for the current year and the next year.

TC4 Easel Back: White cover stock with company logo and information printed in one to full color on two sides. Pre-scored back folds into an easel to set on a desk. Easel back contains "Emergency Phone Numbers" and "Future Planning."

Binding: Black wire-o.



TC4 - 5 13/16 x 4 1/2

item	size	100	250	500	1000
TC4	5 13/16 x 4 1/2	5.91	3.89	3.11	2.52
TC5	8 3/4 x 4	6.09	4.08	3.29	2.76

(4R)

Custom Photo Wall Calendars



• Single Custom Photo



MW10B - 10 5/8 x 16

Single Custom Photo

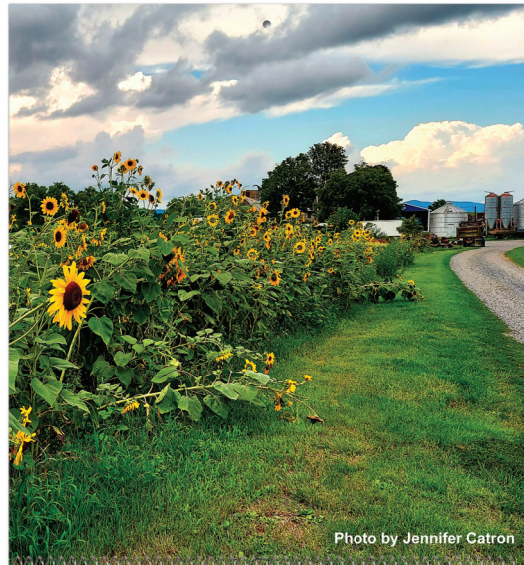


Photo by Jennifer Catron



MW411 - 9 X 19 1/2

Executive Custom Photo

Single Photo

Item: MW10B

Size: Open 10 5/8 x 16

Closed 10 5/8 x 8 1/8

Photo Size: 10 5/8 x 8 1/8

Paper Stock: 12 sheets, 80 lb. gloss text, black only calendar.

Front cover, 80 lb. gloss cover printed full color, one side. Submit one custom photo with logo and copy.

Standard Features: Coil bound with white wire. Hole at top for hanging. January-December (12 months) calendar includes American and major Canadian holidays, moon phases, and Julian dates.

Executive

Item: MW411

Size: 9 x 19 1/2

Photo Size: 9 x 9 3/4

Ad Imprint Area: 7 3/4 x 1 1/4

Paper Stock: 12 sheets, 80 lb. gloss cover. Submit 13 photographs (one per month plus the front cover). Company logo/tagline printed in black on bottom of each sheet.

Standard Features: January-December (12 months) calendar printed in black. Coil bound with silver wire. Hole at top for hanging.

item	theme	100	250	500	1000
MW411	13 Custom Photos	6.93	6.33	5.74	5.15
MW10B	1 Custom Photo	6.23	5.65	5.03	4.45

(4R)

Custom Photo Wall Calendars

- Large numbers perfect for seniors



- Coil bound or stapled same price!



Full Size

Item: MW10/MW10S (Standard)
Item: MW10E/MW10SE (Easy Read)
Size: Open 10 5/8 x 18 1/4
Closed 10 5/8 x 10 1/4
Photo Size: 10 5/8 x 8 1/8
Ad Imprint Area: 10 x 1 1/2

Paper Stock: 12 sheets, 80 lb. gloss text. Front and back cover, 80 lb. gloss cover. Photographs printed full color with calendar printed two colors (exact PMS matches not available). Submit 13 custom photos (one per month plus the front cover). Company logo/tagline full color imprint on bottom of back sheet.

Standard Features: MW10: Coil bound with white wire. MW10S: Stapled. MW17: Coil bound with silver wire. Hole at top for hanging. January-December (12 months) calendar includes American holidays, moon phases, and Julian dates. Last sheet features two years at a glance.

Mini

Item: MW17
Size: Open 5 5/8 x 9 7/8
Closed 5 5/8 x 5 3/4
Photo Size: 5 5/8 x 4 1/4
Ad Imprint Area: 5 x 1



- 13 custom photos
- Only 100 minimum order
- Start any month
- Customized date blocks available

item	100	250	500	1000
MW17 Coil bound	3.48	3.19	2.87	2.58
MW10/MW10E Coil bound	6.93	6.33	5.74	5.15
MW10S/MW10SE Stapled	6.93	6.33	5.74	5.15

(4R)





MW118 - 10 ⁵/₈ x 18 ¹/₄

Peaceful Peaks

- ☀ Free full color imprint

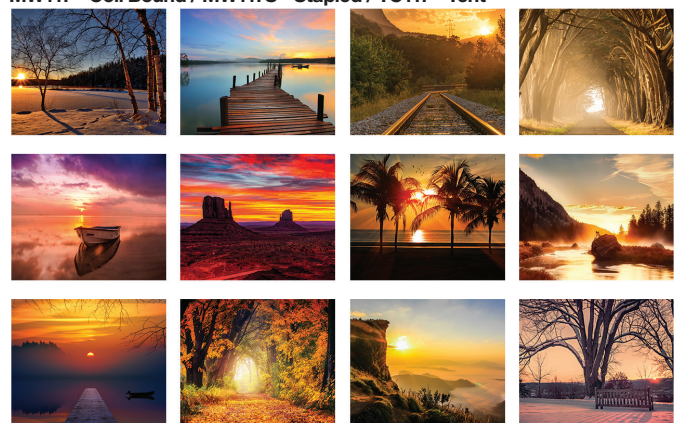
Majestic Outdoors

MW110 - Coil Bound / MW110S - Stapled / TC110 - Tent

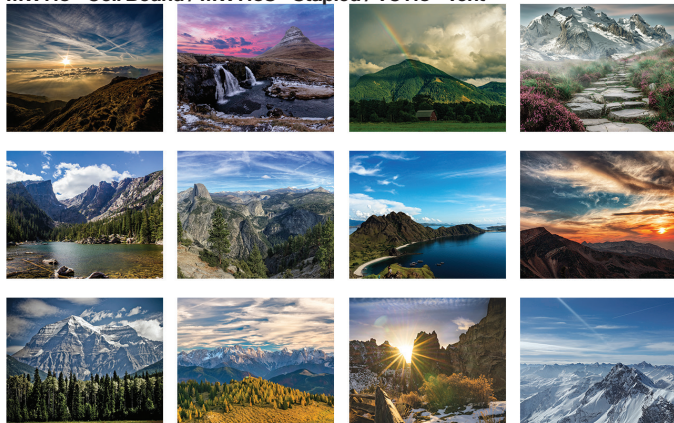


Serene Sunsets

MW117 - Coil Bound / MW117S - Stapled / TC117 - Tent

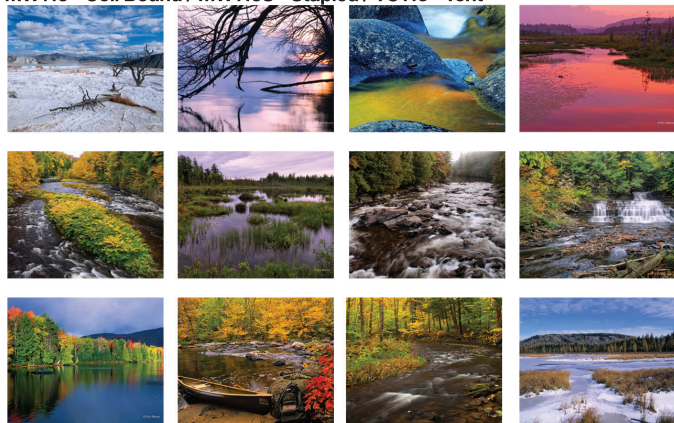


Peaceful Peaks

MW118 - Coil Bound / MW118S - Stapled / TC118 - Tent

Scenic Water

MW113 - Coil Bound / MW113S - Stapled / TC113 - Tent

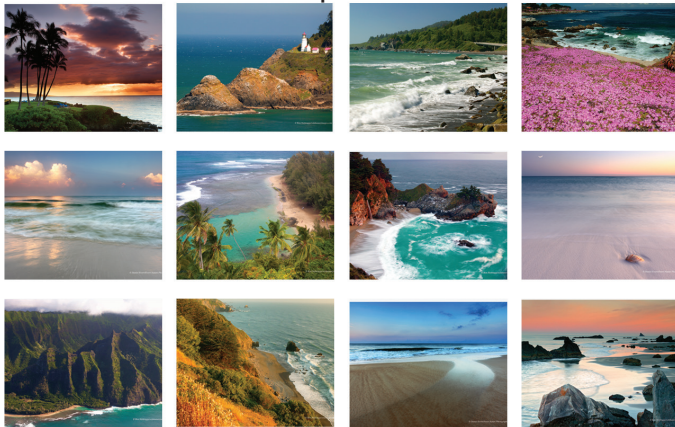


TC113 - 5 $\frac{13}{16}$ x 4 $\frac{1}{2}$

Scenic Water

American Coasts

MW115 - Coil Bound / MW115S - Stapled / TC115 - Tent



American Wildlife

MW112 - Coil Bound / MW112S - Stapled / TC112 - Tent



Old Glory

MW119 - Coil Bound / MW119S - Stapled / TC119 - Tent



Magnificent Trains

MW123 - Coil Bound / MW123S - Stapled / TC123 - Tent



Monthly Calendars



July 2022						
SUN	MON	TUE	WED	THU	FRI	SAT
					1	2
3	4	5	6	7	8	9
10	11	12	13	14	15	16
17	18	19	20	21	22	23
24	25	26	27	28	29	30
31						

HOHMANTM
PLATING

814 Hillrose Ave • Dayton, Ohio 45404
937-228-2191
hohmanplating.com

MW119S - 10 5/8 x 18 1/4

Old Glory

• Coil bound or stapled - same price!

January 2022

SUN	MON	TUE	WED	THU	FRI	SAT
					1	
2	3	4	5	6	7	8
9	10	11	12	13	14	15
16	17	18	19	20	21	22
23	24	25	26	27	28	29
30	31					

LIFESCRIPT PHARMACY
"Finally you take control!"

LIFESCRIPT PHARMACY
39039 Powers Pacific Hwy, Ste. 201 • Fremont, CA 94538
Tel: 510-878-7562 | Fax: 510-878-7869

- Independently owned and operated
- Pharmacist owner with 25 years of experience
- 24/7 Pharmacy emergency consultation service
- We check side effects and drug interactions for all your medications
- Accept all pharmacy insurances
- We will go the extra mile to earn your business!

• Free Delivery: LifeScript Pharmacy delivers your medications right to your home

TC112 - 5 13/16 x 4 1/2

American Wildlife

Additional themes
available at
drum-line.com

January - December (12 months), full color imprint on bottom sheet/easel.

item		100	250	500	1000
MW108 - 124	Coil bound	4.05	3.84	3.63	3.50
MW108S - 124S	Stapled	4.05	3.84	3.63	3.50
TC2-124	Tent	2.64	2.30	2.11	1.94

(4R)

Monthly Calendars



148 - 8 x 14

US Male



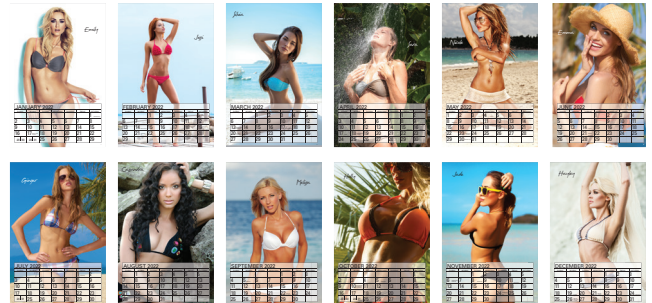
362436 - 8 x 14

Centerfold

148 - US Male



362436 - Centerfold



Item: 148 - US Male

362436 - Centerfold

Size: 8 x 14

Imprint Area: 6 3/4 x 1 1/2

Paper Stock: 12 sheets, 80 lb. gloss cover. 12 photographs printed full color, company logo/tagline printed in black on bottom of extended back sheet.

Standard Features: January-December (12 months) calendar printed in black. Coil bound with silver wire. Hole at top for hanging.

item	theme	100	250	500	1000
148	US Male	4.05	3.84	3.63	3.50
362436	Centerfold	4.05	3.84	3.63	3.50

(4R)

Monthly Calendars



BUCKEYE
MEYER FEEDS & SUPPLIES
Gene & Mary Meyer
10886 W. Co. Rd. 62, Kansas, OH 44841
419-457-2590

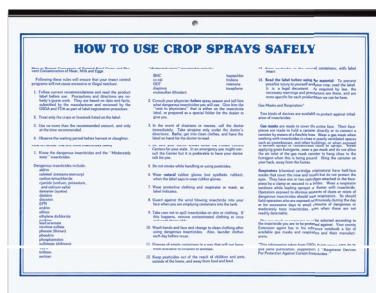
Jan. 2022

December 2021 February 2022

S	M	T	W	T	F	S
New Moon 2nd	First Quarter 9th	Full Moon 17th	Last Quarter 25th			1 New Year's Day
2 363	3 362	4 361	5 360	6 359	7 358	8 357
9 356	10 355	11 354	12 353	13 352	14 351	15 350
16 349	17 348	18 347	19 346	20 345	21 344	22 343
23 342	24 341	25 340	26 339	27 338	28 337	29 336
30 335	31 334					

AT END OF MONTH FOLD PAD SHEET UNDER TOP FOR FUTURE REFERENCE BOLD NUMBERS: Days involving a holiday.

7072 - 11 x 17



Utility

Item: 7072

Size: 11 x 17

Imprint Area: 9 1/2 x 1 1/2

Image Paper Stock: Gloss cover, printed full color. Submit your own custom artwork or use one of our stock photos.

Calendar Pad: January – December (12 months) calendar printed in red and blue ink only on white offset with moon phases and Julian dates on the front of the pad. Monthly budget schedules, zodiac information, and weather forecasts on the back of each sheet.

Standard Features: Black tin at top. Handy business summary and inventory sheets are included, as well as, pages for important household and crop records.

item	size	imprint area	100	250	500	1000
7072	11 x 17	9 1/2 x 1 1/2	4.02	3.32	2.69	2.49

(4R)



January 2022

Sun	Mon	Tues	Wed	Thurs	Fri	Sat
						1 New Year's Day
2	3	4	5	6	7	8
9	10	11	12	13	14	15
16	17	18	19	20	21	22
23	24	25	26	27	28	29
30	31					

GARMIN We are Product Support

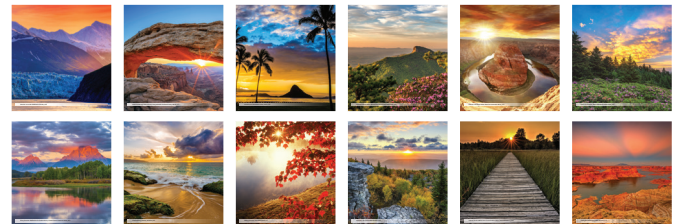
211 - 9 X 19 1/2

Countryside Charm

211 - Countryside Charm



411 - Sunrise / Sunset



Executive

Item: 211 - Countryside Charm

411 - Sunrise/Sunset

Size: 9 x 19 1/2

Imprint Area: 7 3/4 x 1 1/4

Paper Stock: 12 sheets, 80 lb. gloss cover. 12 photographs printed full color, company logo/tagline printed in black on bottom of each sheet.

Standard Features: January-December (12 months) calendar printed in black. Coil bound with silver wire. Hole at top for hanging.

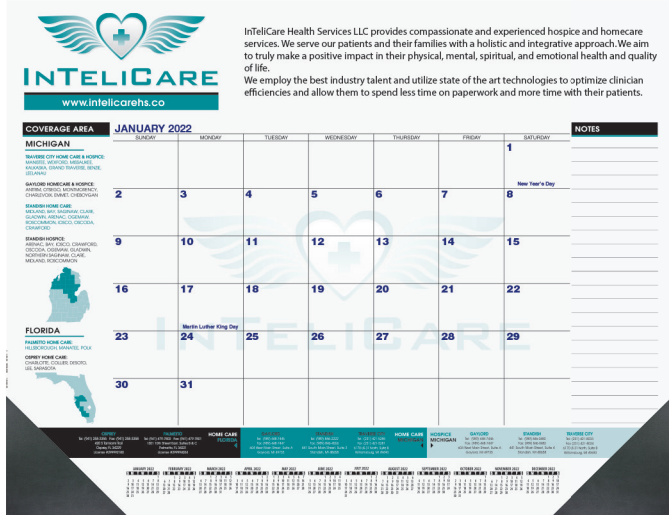
item	theme	100	250	500	1000
211	Countryside Charm	6.93	6.33	5.74	5.15
411	Sunrise/Sunset	6.93	6.33	5.74	5.15

(4R)



Calendar Desk Pads

Size: 21 3/4 x 17



Item DDP1A - Blue and Black calendar



Item DDP2A - Blue and Black calendar



Item DDP1B - Black calendar



Item DDP2B - Black calendar



Item DDP1C - Red and Black calendar



Item DDP2C - Red and Black calendar



Calendar Desk Pads

Size: 21 3/4 x 17

• FREE hole punch

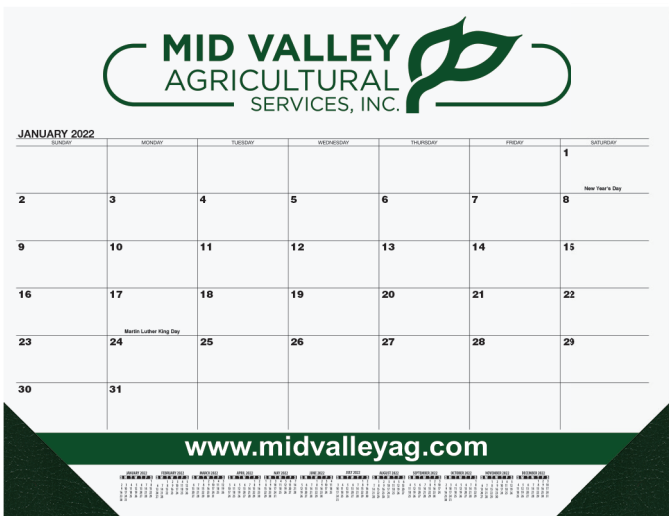


Item DDP3A - Blue and Black calendar



Item DDP7B - Black calendar
August 2021 - July 2022

• Academic



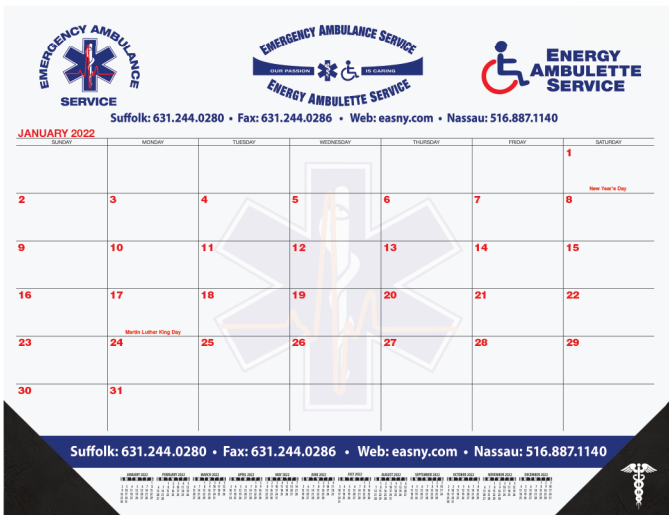
Item DDP3B - Black calendar

3 Step Ordering

(see details page 19)

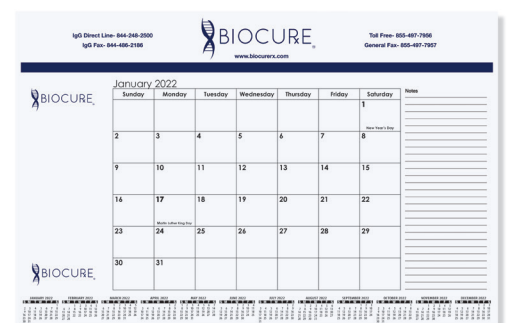
- 1 Layout
- 2 Ink Color
- 3 Corner Color

- FREE 13th Month
- FREE Phantom Imprint
- MORE Corner Colors
- FREE Hole Punch
- EXCLUSIVE Corner Imprint Option



Item DDP3C - Red and Black calendar

Small Calendar Desk Pads
available at drum-line.com



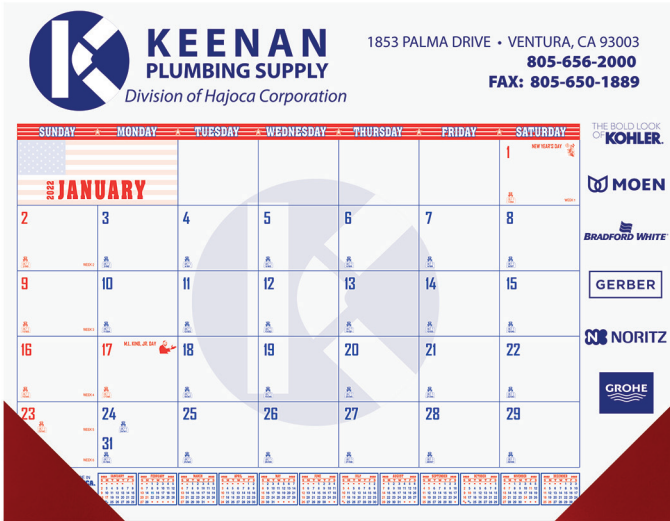
Item CDP1B

Optional
Corner Imprint

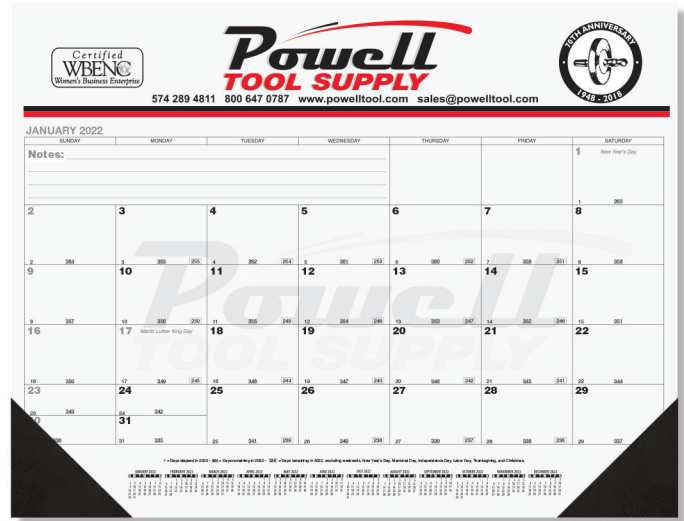
Calendar Desk Pads

with Julian and Contractor Dates

Size: 21 3/4 x 17



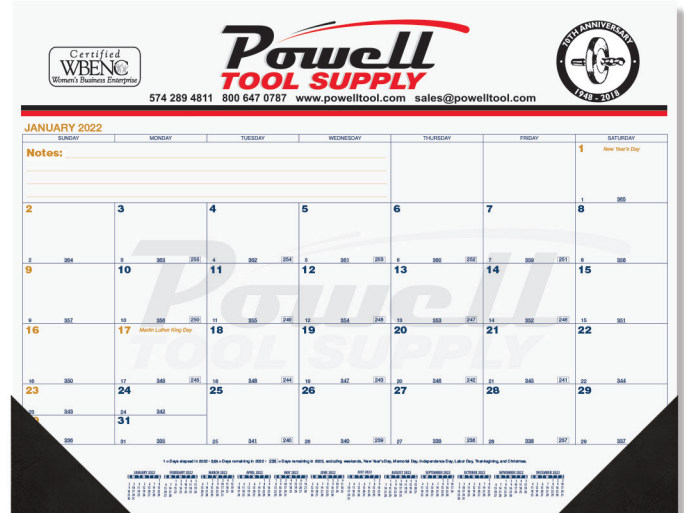
Item CA212 - Patriotic Reflex Blue & 485 Red



Item DDP5B - Black calendar with Julian and Contractor dates.



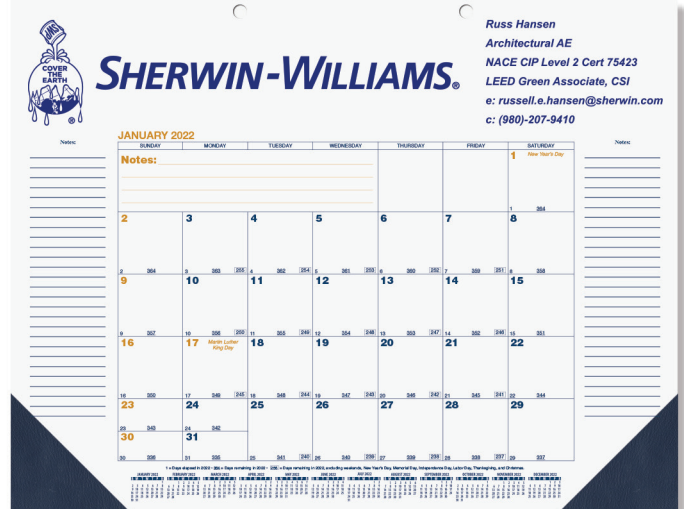
Item DDP4B - Black calendar with Julian and Contractor dates.



Item DDP5D - Blue and Gold calendar with Julian and Contractor dates.



Item DDP4D - Blue and Gold calendar with Julian and Contractor dates.



Item DDP6D - Blue and Gold calendar with Julian and Contractor dates.

Calendar Desk Pads

Size: 21 3/4 x 17

Paper Stock: 60 lb. white offset, printed one or two standard colors, one side. Padded at top with 13 sheets to a pad with chipboard back. Academic (DDP7B) has 12 sheets.

Corners: Two corners at bottom of pad. Leather-like material (see colors below). Optional imprinted corner foil stamped in one color. Choose gold, silver, copper, or white imprint. Chocolate, thunder gray, and cobalt blue may be debossed. See prices below.

Standard Features: December – December (13 months) preprinted calendar. Twelve month reference calendar standard at bottom of each layout. Company logo and information printed in imprint areas shown.

3 Step Ordering

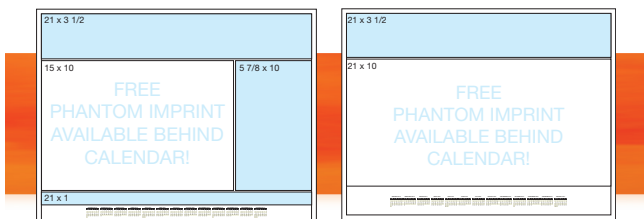
1 Layout 2 Ink Color 3 Corner Color

Calendar Layouts and Imprint Areas



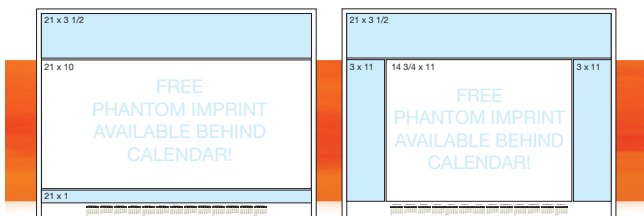
Preprinted Calendar Color:
Item DDP1A - Blue & Black
Item DDP1B - Black
Item DDP1C - Red & Black

Preprinted Calendar Color:
Item DDP4B - Black
Item DDP4D - Blue & Gold
Item CA212 - Blue & Red
with Julian & Contractor dates



Preprinted Calendar Color:
Item DDP2A - Blue & Black
Item DDP2B - Black
Item DDP2C - Red & Black

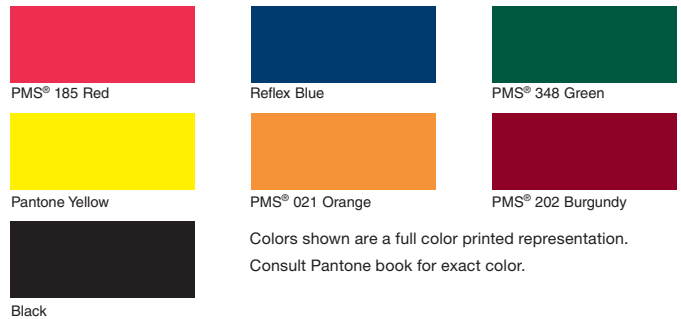
Preprinted Calendar Color:
Item DDP5B - Black
Item DDP5D - Blue & Gold
with Julian & Contractor dates



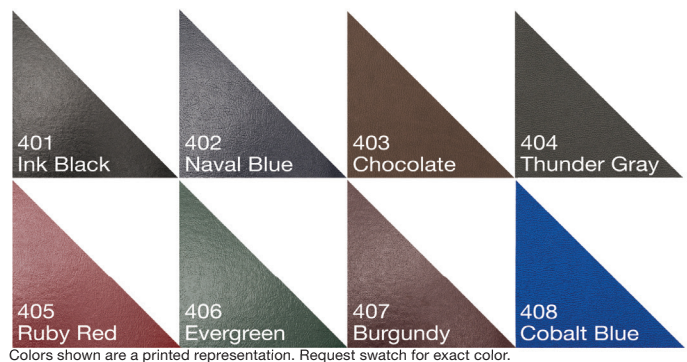
Preprinted Calendar Color:
Item DDP3A - Blue & Black
Item DDP3B - Black
Item DDP3C - Red & Black

Preprinted Calendar Color:
Item DDP6D - Blue & Gold
with Julian & Contractor dates

Standard Ink Colors



Leatherette Corner Colors



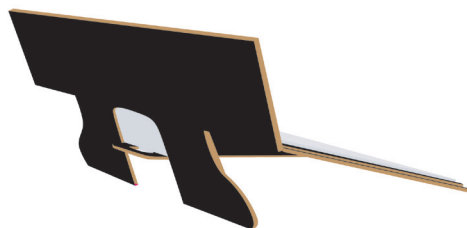
Imprint	100	250	500	1000
One Color	7.33	5.48	4.20	4.05
Two Colors	7.81	5.97	4.68	4.53
Imprinted Corner (1 color)	0.88	0.55	0.42	0.37

(4R)

options	add to base price
Ink colors other than standard	\$60.00 ea
2 hole punch	10¢ per pad FREE
2 additional corners	75¢ per pad
Imprinted corner plate charge	\$60.00

(V)

Easel Back Calendars



Easel Back



EDC14 - Full Color

Back Panel



- Get double the exposure with a free imprint on the back panel



EDC1 - Foil Stamped

Front Panel - Top



Front Panel - Bottom (behind calendar pad)

Full Color

Item: EDC14

Size: 6 1/4 x 6 3/8

Calendar Pad Size: 6 x 4 1/2

Imprint Areas:

Top Front Panel: 6 3/16 x 1 1/2

Bottom (behind calendar): 6 3/16 x 4 3/4. Submit custom art or choose stock January 2022 calendar.

Back Panel: 6 7/16 x 1 1/2

Board: 80 lb. coated cover printed full color with gloss coat, mounted to heavy black chipboard.

Standard Features: December - December (13 months) calendar, includes American holidays and moon phases. Die cut easel back for table or desk.

item		100	250	500	1000
EDC1	Foil Stamped	3.48	2.78	2.54	2.42
EDC14	Full Color	4.92	3.67	3.24	3.04

Plate charge: \$60.00 per foil color (v)

(4R)

Foil Stamped

Item: EDC1

Size: 6 1/4 x 6 3/8

Calendar Pad Size: 6 x 4 1/2

Imprint Area: 5 7/8 x 1 1/8

Board: Heavyweight paperboard foil stamped in one standard color.

Standard Foil Colors: Gloss-Black, White, Ivory, Red, Green, Blue, Navy, Orange, Pink; Metallic-Silver, Gold, Copper, Red, Green, Blue.



Contractor Calendars

- Six pre-printed color combinations or choose your own custom color.



MW20T - 18 x 25

165 Orange & Black



WA107 - 18 x 25

Patriotic - Reflex Blue & 485 Red

Item: MW20A (Process Blue and Black calendar)

Item: MW20B (Black calendar)

Item: MW20C (185-Red and Black calendar)

Item: MW20G (354-Green and Black calendar)

Item: MW20T (165-Orange and Black calendar)

Item: MW20Z (Custom Color calendar)

Item: WA107 Patriotic (Reflex Blue and 485 Red)

Size: 18 x 25

Imprint Area: 17 x 4 1/2

Paper Stock: 13 sheets, 50 lb. white offset, printed one or two standard colors. Black tin at top with hanger.

Standard Ink Colors: PMS® 185-Red, 485-Red, Reflex Blue, 348-Green, 354-Green, Pantone Yellow, 021-Orange, 165-Orange, 202-Burgundy, Black.

Standard Features: 13 month (December - December) preprinted calendar includes memo lines in date blocks along with symbols denoting days elapsed and remaining in the year, work days remaining without Saturdays and Sundays, and work days remaining without Sundays. Includes American and major Canadian holidays and moon phases.



MW20A Process Blue & Black



MW20C 185-Red & Black



MW20B Black



MW20G 354-Green & Black



MW20Z Custom

- Bars printed to match imprint

item	imprint	100	250	500	1000
MW20A-T / WA107	One Color	8.08	7.26	6.46	5.96
MW20A-T / WA107	Two Colors	8.94	7.61	6.62	6.06
MW20Z	One Color	8.94	7.61	6.63	6.06
MW20Z	Two Colors	9.81	7.96	6.81	6.15

(4R)



Commercial Calendars



Item: MW21

Size: 18 x 25

Imprint Area: 17 x 8

Paper Stock: 13 sheets, 50 lb. white offset, printed one or two standard colors. Black tin at top with hanger.

Standard Ink Colors: PMS® 185-Red, Reflex Blue, 348-Green, Pantone Yellow, 021-Orange, 202-Burgundy, Black.

Standard Features: 13 month (December - December) preprinted calendar includes American and major Canadian holidays, moon phases, and Julian dates. Black tin at top with hanger.

item	imprint	100	250	500	1000
MW21	One Color	8.08	7.26	6.46	5.96
MW21	Two Colors	8.94	7.61	6.62	6.06
MW22	One Color	5.86	4.51	3.81	3.51
MW22	Two Colors	6.73	4.86	3.99	3.61

(4R)

Item: MW22

Size: 12 1/4 x 18 1/2

Imprint Area: 11 3/4 x 8 1/4

Item: 1818

Size: 18 x 18 3/4

Imprint Area: 17 x 5 1/2 Top of Calendar

Paper Stock: 12 sheets, 50 lb. white offset, printed one or two standard colors.

Standard Ink Colors: PMS® 185-Red, Reflex Blue, 348-Green, Pantone Yellow, 021-Orange, 202-Burgundy, Black.

Standard Features: 12 month (January - December) preprinted calendar in black and red. Black tin at top with hanger.

item	imprint	100	250	500	1000
1818	One Color	8.60	6.27	4.65	4.54
1818	Two Colors	9.44	6.60	4.82	4.62

(4R)



Commercial Calendars



MW1C - 12 x 17 3/8



MW3C - 17 x 24



1825 - 19 x 25

Item: MW1C

Size: 12 x 17 3/8

Imprint Area: 12 x 8 1/8

Image Paper Stock: Gloss cover, printed one to full color. Submit your own custom artwork or use one of our stock photos. Exact PMS matches not available.

Calendar Pad: January – December (12 months) calendar printed in black and red ink only on white offset. Includes American holidays, moon phases, and Julian dates. Last sheet features two years at a glance.

Standard Features: Calendar pad stapled to bottom of image sheet. Black tin at top with hanger.

item	imprint area	100	250	500	1000
MW1C	12 x 8 1/8	3.45	3.02	2.81	2.38
MW3C	17 x 12	4.97	4.68	4.03	3.54

(4R)

Item: MW3C

Size: 17 x 24

Imprint Area: 17 x 12

Item: 1825

Size: 19 x 25

Imprint Area: 17 1/2 x 7 Top of Calendar

Image Paper Stock: Matte cover printed one to full color.

Calendar Pad: 12 sheets, 50 lb. white offset printed 185 Red and Reflex Blue.

Standard Features: Calendar pad stapled to bottom of image sheet. Black tin at top with hanger.

item	imprint area	100	250	500	1000
1825	17 1/2 x 7 1/2	7.52	5.62	4.51	3.90

(4R)

Almanac Calendars



203-S - 8 5/8 x 16

Spring



203 Cover View



203-F - 8 5/8 x 16

Farmland

Weather Vane

Item: 203-F (Farmland)

Item: 203-S (Spring)

Size: 8 5/8 x 16 (open)

8 5/8 x 9 (closed)

Imprint Area: 7 3/4 x 1 1/4

Paper Stock: Front Cover: 65 lb. cover. Pad: 50 lb. white offset. Black imprint at bottom of back sheet.

Standard Features: 12 month (January - December) calendar printed red and black filled with weather predictions, sunrise/sunset times, zodiacs, moon phases, best fishing days, best planting days, and general information. Full color stock photo inside cover. Season's Greetings on outside front cover.

item	image	250	500	1000	2500
203-F	Farmland	1.56	1.35	1.25	1.17
203-S	Spring	1.56	1.35	1.25	1.17

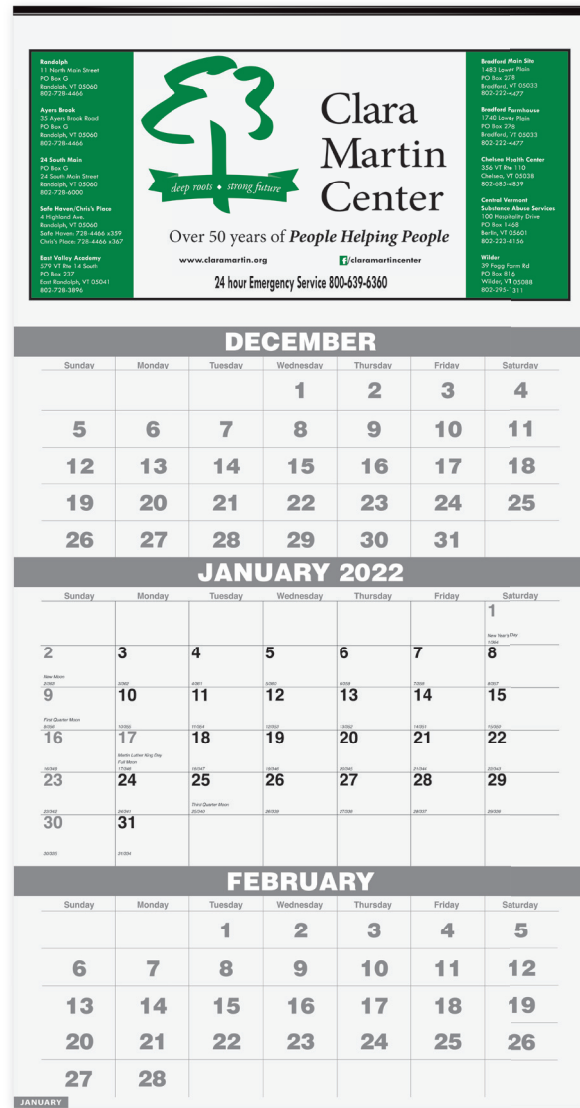
(4R)



Three Months at a Glance Calendars



MW16 - 12 x 18 1/2



MW30 - 12 1/4 x 25

Item: MW16

Size: 12 x 18 1/2

Overall Imprint Area: 12 x 8 3/4

Top Banner Imprint Area: 12 x 1 3/4

Photo Size: 12 x 7

Image Paper Stock: 12 sheets, 80 lb. gloss text printed full color. Submit 12 custom photos or choose from our stock photos.

Standard Features: 14 months (December - January) shown three months at a glance. Wire-O bound with black or white wire (black will be used unless specified). Wire hook at top for hanging.

item	size	100	250	500	1000
MW16	12 x 18 1/2	7.12	6.30	5.86	5.31

(4R)

Item: MW30

Size: 12 1/4 x 25 Imprint Area: 11 3/4 x 5 1/2

Paper Stock: 12 sheets, 50 lb. white offset, printed one or two standard colors. Black tin at top with hanger.

Standard Ink Colors: PMS® 185-Red, Reflex Blue, 348-Green, Pantone Yellow, 021-Orange, 202-Burgundy, Black.

Standard Features: 14 month (December - January) preprinted calendar shown three months per sheet. Current month includes memo space, American and major Canadian holidays, moon phases, and Julian dates. Black tin at top with hanger.

imprint	100	250	500	1000
One Color	7.77	6.24	5.03	4.42
Two Colors	8.63	6.59	5.20	4.50

(4R)



Three Months at a Glance Calendars



Small Calendar
Item: MW12 with apron
Size: Open 6 x 20 ³/₄
Folds to 6 x 6 ¹/₄
Imprint Areas:
Top – 6 x 6
Bottom – 5 ¹/₂ x 1 ³/₄



Large Calendar
Item: MW13 with apron
Size: 10 ³/₄ x 35
Folds to: 10 ³/₄ x 10 ¹/₄
Imprint Areas:
Top – 10 ³/₄ x 8
Bottom – 10 ¹/₄ x 1 ¹/₂



Small Calendar
Item: MW14
Size: Open 6 x 18 ³/₄
Folds to 6 x 6 ¹/₄
Imprint Area Top: 6 x 6



Large Calendar
Item: MW15
Size: 10 ³/₄ x 33 ³/₄
Folds to 10 ³/₄ x 9 ³/₄
Imprint Area Top: 10 ³/₄ x 8

Paper Board Stock: White stock coated one side, printed one to full color. Exact PMS matches not available.

Calendar Pad: Three 14 month (December – January) calendar pads printed in black and red ink only on white offset. Includes American holidays.

Standard Features: Calendar pads wire-o bound into board. Tearing off calendar sheets allows three months to be visible at one time.

Binding: Black Wire-O.

item	size	100	250	500	1000
MW12/14	small	6.72	6.55	6.45	6.29
MW13/15	large	8.60	8.30	8.20	8.00

(4R)

Year-at-a-Glance Calendars



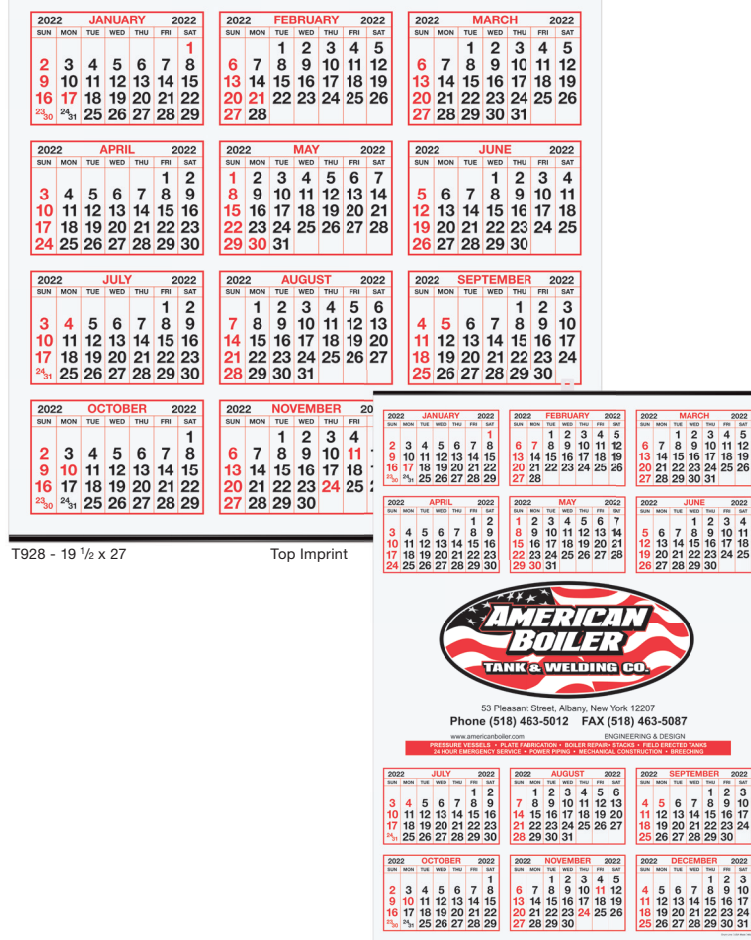
YG3 - 12 x 18



YG2 - 6 x 9



YG1 - 4 x 9



M929 - 19 1/2 x 27

Center Imprint

Item: YG1 - 4 x 9
Item: YG2 - 6 x 9
Item: YG3 - 12 x 18

Paper Stock: White 10 pt. coated one side, printed full color with clear gloss coat on one side. Please specify imprint area position: top, middle, or bottom. Exact PMS matches not available.

Standard Features: 12 month year at a glance calendar. Hole at the top for hanging.

item	size	imprint area	250	500	1000
YG1	4 x 9	3 1/2 x 1	N/A	0.68	0.35
YG2	6 x 9	5 1/2 x 2	N/A	1.03	0.50
YG3	12 x 18	10 3/4 x 4 3/4	1.42	1.23	1.05

(3R)

Item: T928 Top Imprint
Item: M929 Center Imprint
Size: 19 1/2 x 27
Imprint Area: 18 x 9

Paper Stock: 100 lb. gloss text.

Standard Features: 12 month year at a glance calendar in 185-Red and Black. Black tin at top (with hanger) and bottom. Imprint in 185-Red and Black.

item	size	imprint area	100	250	500	1000
T928	19 1/2 x 27	18 x 9	4.56	3.28	2.59	2.24
M929	19 1/2 x 27	18 x 9	4.56	3.28	2.59	2.24

(4R)

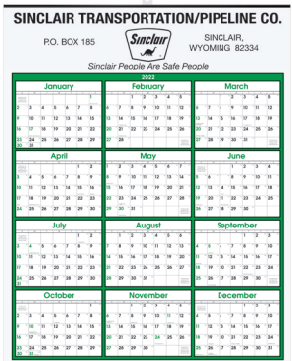


Year-at-a-Glance Calendars

• Choose top or center imprint



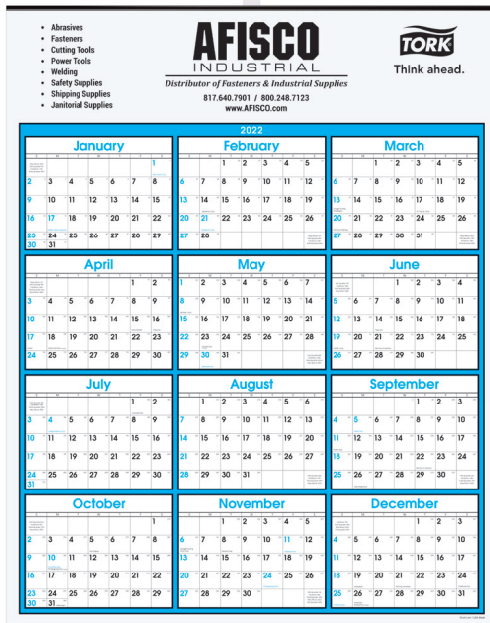
2281M - 22 x 28 Center Imprint



2281 - 22 x 28 Top Imprint

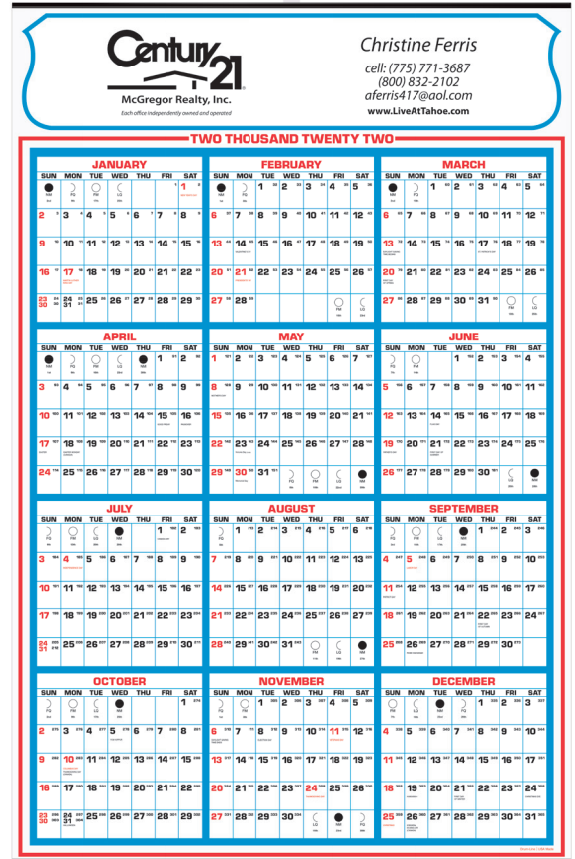


2280M - 22 x 28 Center Imprint



2280 - 22 x 28 Top Imprint

• Perfect for scheduling



2250 - 22 x 34

Item: 2280 - Top Imprint
Item: 2280M - Center Imprint
Size: 22 x 28
Imprint Area: 21 x 4 1/2

Paper Stock: 100 lb. matte text.

Standard Features: 12 month year-on-a-page calendar. Features generous memo blocks and clean, bold numbers. Includes consecutive numbers and moon phases. Black tin at top (with hanger) and bottom. Black imprint.

item		100	250	500	1000
2280 / 2280M	Blue	3.89	3.19	2.71	2.43
2281 / 2281M	Green	3.89	3.19	2.71	2.43

(4R)

Item: 2281 - Top Imprint
Item: 2281M - Center Imprint
Imprint Area: 21 x 4 1/2

Item: 2250
Size: 22 x 34
Imprint Area: 19 x 3 1/2

Paper Stock: 100 lb. matte text.

Standard Features: 12 month year at a glance calendar preprinted in Process Blue, 185 Red and Black with consecutive day numbers and moon phases. Black tin at top (with hanger) and bottom. Black imprint.

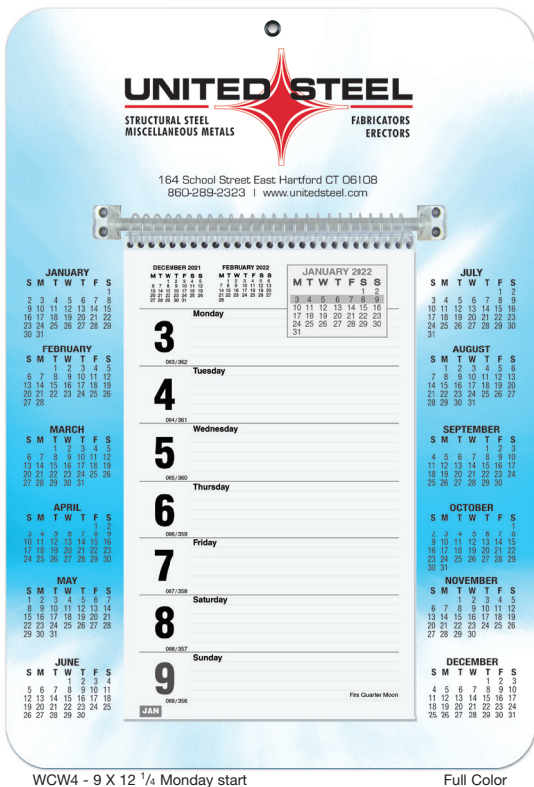
item	imprint area	100	250	500	1000
2250	19 x 3 1/2	5.30	4.01	2.76	2.53

(4R)



Weekly Wall Calendars

• Metal reinforced eyelet



WCW4 - 9 X 12 1/4 Monday start

Full Color



WCW5 - 7 x 13 Sunday start

Foil Stamped



WCW7 - 7 x 12 1/4 Sunday start

Full Color

Full Color

Item: WCW7 Sunday start

Item: WCW6 Monday start

Size: 7 x 12 1/4

Imprint Area Top: 6 1/4 x 2 1/2

Item: WCW3 Sunday start

Item: WCW4 Monday start

Size: 9 x 12 1/4

Imprint Area Top: 7 3/4 x 2 1/2

Foil Stamped

Item: WCW5 Sunday start

Item: WCW2 Monday start

Size: 7 x 13

Imprint Area: 2 1/2 x 6 1/4

Calendar Board: Heavyweight board with full color or foil stamped imprint.

Standard Features: Durable single rod design to prevent breakage.
WCW2/5 - Die cut easel back for table or desk included.

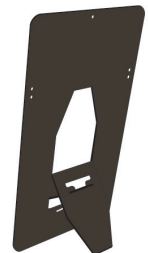
Calendar Sheets: Week at a glance with room to write.

Monday start - back of all sheets lined for notes.

Sunday start - miscellaneous information on back of all sheets.



• Optional die cut easel back for table or desk available.



• Save calendar pages and notes for future reference by flipping the page over the plastic bar.

item	100	250	500	750	1000
WCW2/5	5.02	4.86	4.72	4.64	4.50
WCW3/4/6/7	4.39	4.25	4.12	4.12	4.04

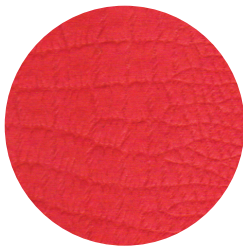
Plate charge (WCW2/5): \$60.00 per foil color (v).

(5R)



Daily Wall Calendars

★ 10 color choices at drum-line.com



● New! Rich alligator embossing available.
35¢ ea (v)

Item: DD1
Size: 7 x 13
Imprint Area: 5 3/4 x 5 1/4

Item: DD2
Size: 6 x 12 1/4

Item: DD3
Size: 9 x 12 1/4

365 day calendar pad mounted to heavyweight board.
Available with full color or foil stamped imprint.

Calendar Pad: 4 1/8 x 5, 365 sheet calendar pad printed in black ink only on white offset. Refill pads available.

Standard Features: Calendar pad mounted to heavyweight board with white posts and four round corners.

item	size	imprint	100	250	500	1000
DD1	7 x 13	Foil Stamped*	10.46	8.79	8.68	8.45
DD2	6 x 12 1/4	Full Color	9.66	7.51	6.44	6.13
DD3	9 x 12 1/4	Full Color	11.88	10.71	8.78	8.63
DRP4 (refill pads - fits DD1, DD2 & DD3)			3.91	3.91	3.91	3.91

*Plate charge (DD1): \$60.00 per foil color (v)

(4R)

ASI 50873 | PPAI 102565 | SAGE 50670

No Supply Chain Worries

Products are designed and manufactured in our Arkansas facility to fit your customer's needs.

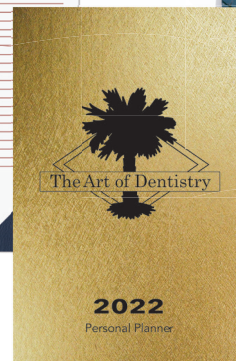
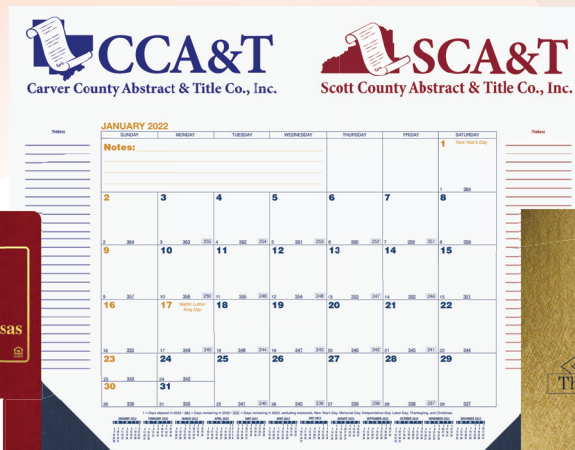
Reliable Fulfillment

Enjoy better quality control, inventory management and 2-3 day transit time to most U.S. locations.

Be Part of Our Family

Expect personalized attention from a supplier you can trust. We have been family-owned and operated since 1928.

Proudly Made in the USA



www.drum-line.com

DRUM-LINE INC.
The Complete Source for Paper Products

