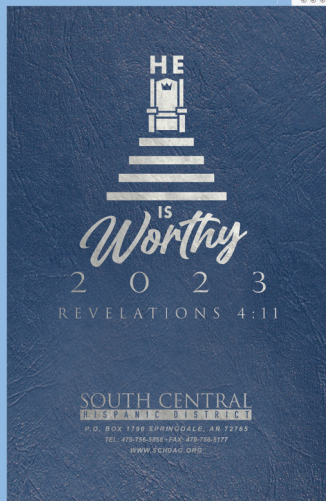


DRUM-LINE

The Complete Source for Paper Products



July 2023

SUN	MON	TUE	WED	THU	FRI	SAT
						1 Crest Day 2023
3 All Moon 2023	4	5	6	7	14 2023	8 15 2023
10 2023	11 Independence Day 2023	12 2023	13 2023	14 2023	21 2023	22 2023
17 New Moon 2023	18 2023	19 2023	20 2023	27 2023	28 2023	29 2023
31 2023	24 First Quarter Moon 2023	25 2023	26 2023	27 2023	28 2023	29 2023



Custom Photo Wall Calendars



• Single Custom Photo



PEERLESS STEEL
PeerlessSteel.com

TROY GRANDVILLE SAGINAW
(800) 482-3947 (800) 442-7192 (800) 633-1208

MICHIGAN SPECIALTY STEEL
(588) 792-2224

July 2023

SUN	MON	TUE	WED	THU	FRI	SAT
						1 Cinco de Mayo
2	3	4	5	6	7	8
9 Full Moon	10	11 Independence Day	12	13	14	15
16 Third Quarter Moon	17	18	19	20	21	22
23 New Moon	24	25	26	27	28	29
30	31					

MW10B - 10 5/8 x 16

Single Custom Photo

**Click to see all
Custom Calendars**

Single Photo
Item: MW10B
Size: Open 10 5/8 x 16
Closed 10 5/8 x 8 1/8
Photo Size: 10 5/8 x 8 1/8

Paper Stock: 12 sheets, 80 lb. gloss text, black only calendar. Front cover, 80 lb. gloss cover printed full color, one side. Submit one custom photo with logo and copy.

Standard Features: Coil bound with white wire. Hole at top for hanging. January-December (12 months) calendar includes American and major Canadian holidays, moon phases, and Julian dates.



Photo by Jennifer Catron

January 2023

Sun	Mon	Tues	Wed	Thurs	Fri	Sat
1 New Year's Day		3	4	5	6	7
8	9	10	11	12	13	14
15	16 Martin Luther King Day	17	18	19	20	21
22	23	24	25	26	27	28
29	30	31				

DECEMBER
5 14 17 18 19 20 21 22 23 24 25 26 27 28 29 30 31

FEBRUARY
5 14 17 18 19 20 21 22 23 24 25 26 27 28

PAGE COOPERATIVE
Farm Bureau, Inc.

Farm, Lawn & Garden Supplies - Feed - Seed - Fertilizer
Paint - Hardware - CE Appliances - Power Equipment
Lumber & Building Supplies - Local Produce In Season
"Celebrating 100 Years of Helping our Community Grow!"
127 Big Oak Road, Luray, VA 22835 | 540-743-5194
Mon. - Sat. 7:30am - 6:00pm | Sunday 1:00pm - 5:00pm

MW411 - 9 X 19 1/2

Executive Custom Photo

* 80 lb. Cover stock throughout

Executive
Item: MW411
Size: 9 x 19 1/2
Photo Size: 9 x 9 3/4
Ad Imprint Area: 7 3/4 x 1 1/4

Paper Stock: 12 sheets, 80 lb. gloss cover. Submit 13 photographs (one per month plus the front cover). Company logo/tagline printed in black on bottom of each sheet.

Standard Features: January-December (12 months) calendar printed in black. Coil bound with silver wire. Hole at top for hanging.

item	theme	100	250	500	1000
MW411	13 Custom Photos	7.64	6.98	6.33	5.68
MW10B	1 Custom Photo	6.54	5.93	5.28	4.67

(4R)

Custom Photo Wall Calendars

- Large numbers perfect for seniors



MW10E - 10 5/8 x 18 1/4

Easy Read

[Click to see all Custom Calendars](#)

Item: MW10/MW10S (Standard)
Item: MW10E/MW10SE (Easy Read)
Size: Open 10 5/8 x 18 1/4
 Closed 10 5/8 x 10 1/4
Photo Size: 10 5/8 x 8 1/8
Ad Imprint Area: 10 x 1 1/2

Paper Stock: 12 sheets, 80 lb. gloss text. Front and back cover, 80 lb. gloss cover. Photographs printed full color with calendar printed two colors (exact PMS matches not available). Submit 13 custom photos (one per month plus the front cover). Company logo/tagline full color imprint on bottom of back sheet.

Standard Features: MW10: Coil bound with white wire. MW10S: Stapled. Hole at top for hanging. January-December (12 months) calendar includes American holidays, moon phases, and Julian dates. Last sheet features two years at a glance.

- Coil bound or stapled same price!



MW10S - 10 5/8 x 18 1/4

- 13 custom photos
- Only 100 minimum order
- Start any month
- Customized date blocks available

item	100	250	500	1000
MW10/MW10E Coil bound	7.64	6.98	6.33	5.68
MW10S/MW10SE Stapled	7.64	6.98	6.33	5.68

(4R)

Monthly Calendars

August 2023

SUN	MON	TUE	WED	THU	FRI	SAT
		1 Full Moon	2	3	4	5
6	7	8 Third Quarter Moon	9	10	11	12
13	14	15	16	17	18	19
20	21	22 New Moon	23	24	25	26
27	28	29	30	31 First Quarter Moon		

MATHS
 © 1041 West 2nd Street / PO Box 545
 Winner, SD 57580
 (605) 842-3800
 (605) 842-1484
 math@dotscientific.com
 info@dotscientific.com
 Since 1958

MW120 - 10 5/8 x 18 1/4

Agriculture

• Free full color imprint

January 2023

SUN	MON	TUE	WED	THU	FRI	SAT
1	2	3	4	5	6	7
8	9	10	11	12	13	14
15	16	17	18	19	20	21
22	23	24	25	26	27	28
29	30	31				

dot scientific inc.
 You Can Identify With Us
 (800) 878-1785 • www.dotscientific.com

TC115 - 5 13/16 x 4 1/2

American Coasts

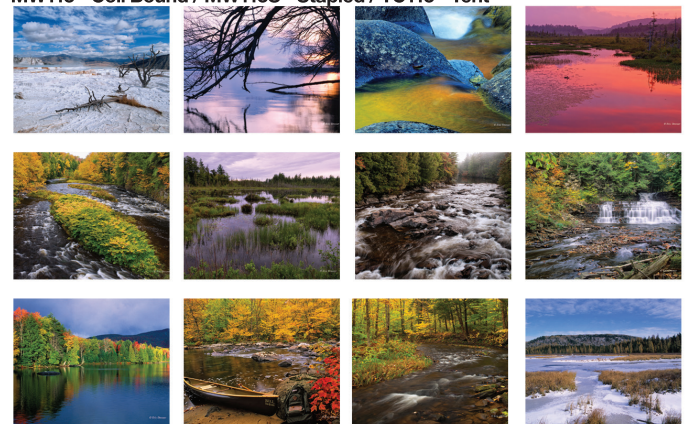
American Coasts MW115 - Coil Bound / MW115S - Stapled / TC115 - Tent



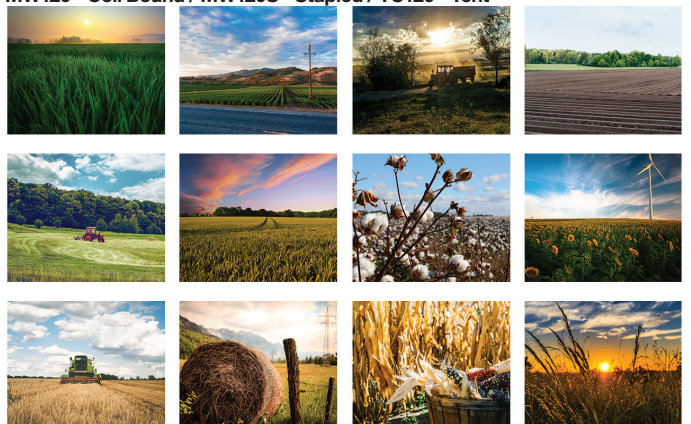
Waterways MW108 - Coil Bound / MW108S - Stapled / TC108 - Tent



Scenic Water MW113 - Coil Bound / MW113S - Stapled / TC113 - Tent



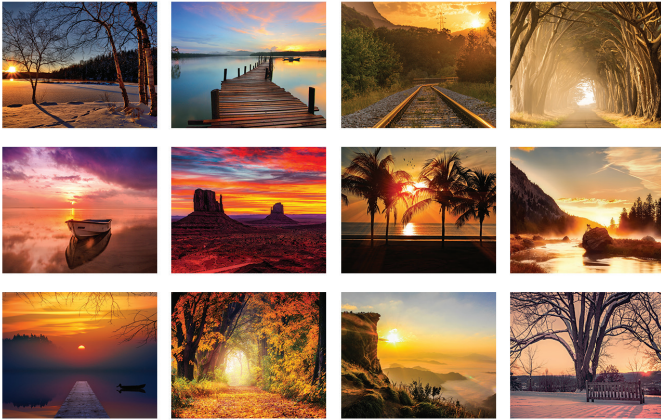
Agriculture MW120 - Coil Bound / MW120S - Stapled / TC120 - Tent



Monthly Calendars

Serene Sunsets

MW117 - Coil Bound / MW117S - Stapled / TC117 - Tent



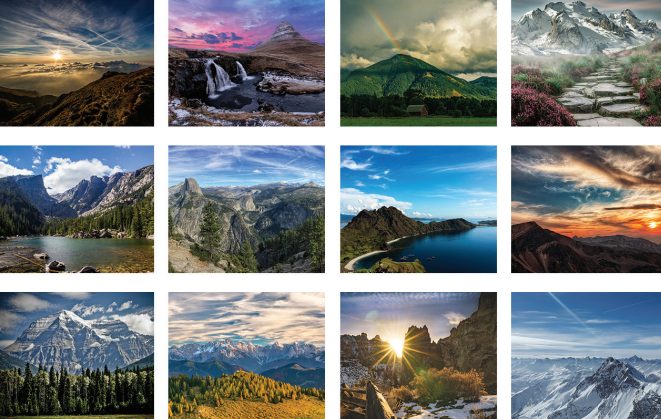
Majestic Outdoors

MW110 - Coil Bound / MW110S - Stapled / TC110 - Tent



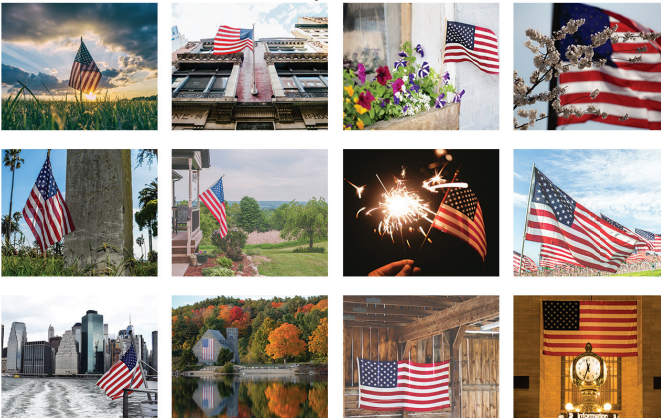
Peaceful Peaks

MW118 - Coil Bound / MW118S - Stapled / TC118 - Tent



Old Glory

MW119 - Coil Bound / MW119S - Stapled / TC119 - Tent



April 2023

SUN	MON	TUE	WED	THU	FRI	SAT
						1
2	3	4	5	6	7	8
9	10	11	12	13	14	15
16	17	18	19	20	21	22
23	24	25	26	27	28	29
30						



MW110S - 10 5/8 x 18 1/4

Majestic Outdoors

• Coil bound or stapled - same price!



TC118 - 5 13/16 x 4 1/2

Peaceful Peaks

Click to view all Desk Calendars

January - December (12 months), full color imprint on bottom sheet/easel.

item		100	250	500	1000
MW107 - 124	Coil bound	4.46	4.23	4.00	3.86
MW107S - 124S	Stapled	4.46	4.23	4.00	3.86
TC1-124	Tent	3.19	2.78	2.55	2.35

(4R)

Monthly Calendars

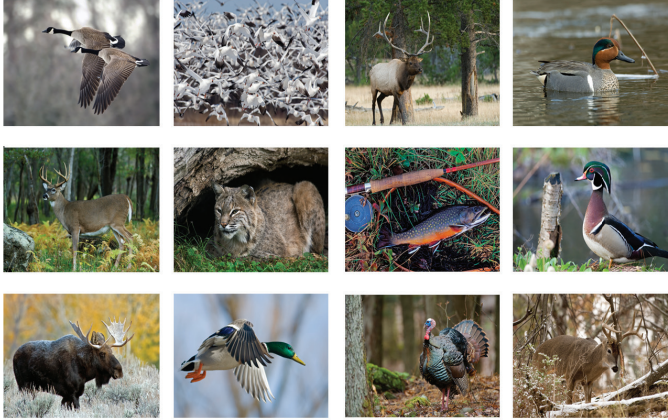
American Wildlife

MW112 - Coil Bound / MW112S - Stapled / TC112 - Tent



Wildlife

MW1 - Coil Bound / MW1S - Stapled / TC1 - Tent



Bird Watching

MW114 - Coil Bound / MW114S - Stapled / TC114 - Tent



Fauna

MW3 - Coil Bound / MW3S - Stapled / TC3 - Tent



May 2023

SUN	MON	TUE	WED	THU	FRI	SAT
	1	2	3	4	5	6
7	8	9	10	11	12	13
14	15	16	17	18	19	20
21	22	23	24	25	26	27
28	29	30	31			

Rental Ranch
 Sales • Service • Parts • Rental
 1578 West 29th North, Wichita, Kansas
 316.838.4211
 rentalranchwichita.com

STIHL

MW112S - 10 5/8 x 18 1/4

American Wildlife

• Coil bound or stapled - same price!

June 2023

SUN	MON	TUE	WED	THU	FRI	SAT
			1	2	3	
4	5	6	7	8	9	10
11	12	13	14	15	16	17
18	19	20	21	22	23	24
25	26	27	28	29	30	

ROCHESTER ENDODONTICS
 KYLE J. SAISSLEIN, DDS • DAVID M. DOW, DDS, MS
Board Certified Endodontists
 6200 Pinford-Palmyra Rd. • Suite 110 • Fairport, NY 14450
 (585) 223-5330 • 800.383-2172 • www.rochendon.com • rochend@frontiernet.net

TC114 - 5 13/16 x 4 1/2

Bird Watching

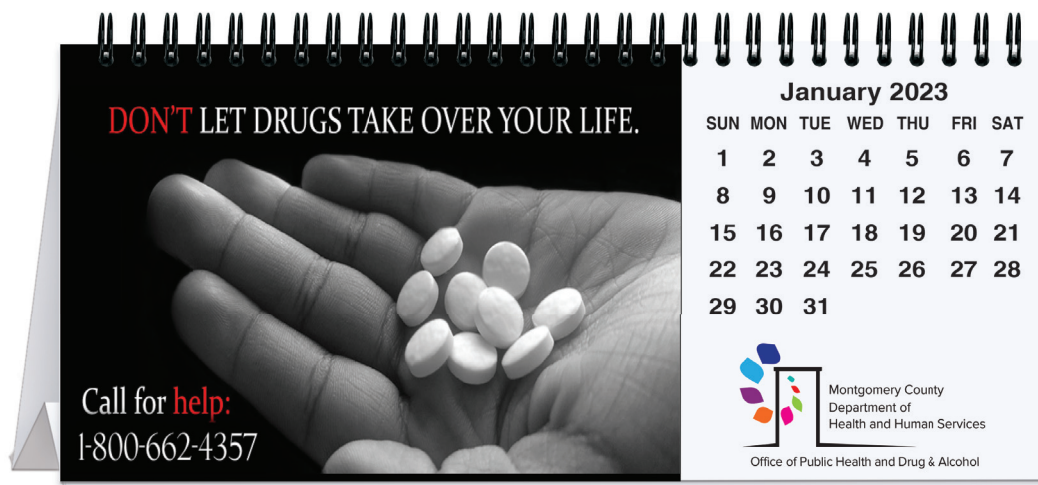
Click to view
all Desk
Calendars

January - December (12 months), full color imprint on bottom sheet/easel.

item		100	250	500	1000
MW107 - 124	Coil bound	4.46	4.23	4.00	3.86
MW107S - 124S	Stapled	4.46	4.23	4.00	3.86
TC1-124	Tent	3.19	2.78	2.55	2.35

(4R)

Custom Photo Tent Calendars



TC5 - 8 3/4 x 4

• 13 Custom Photos!

• Start any month

Item: TC4

Overall Size: 5 13/16 x 4 1/2

Photo Size: 3 x 2 15/16

Easel Imprint Area: 5 5/16 x 1 1/16

Flat Size for Mailing: 5 13/16 x 6 1/4

Item: TC5

Overall Size: 8 3/4 x 4

Photo Size: 5 5/8 x 3 7/8

Imprint Area: 2 7/8 x 1

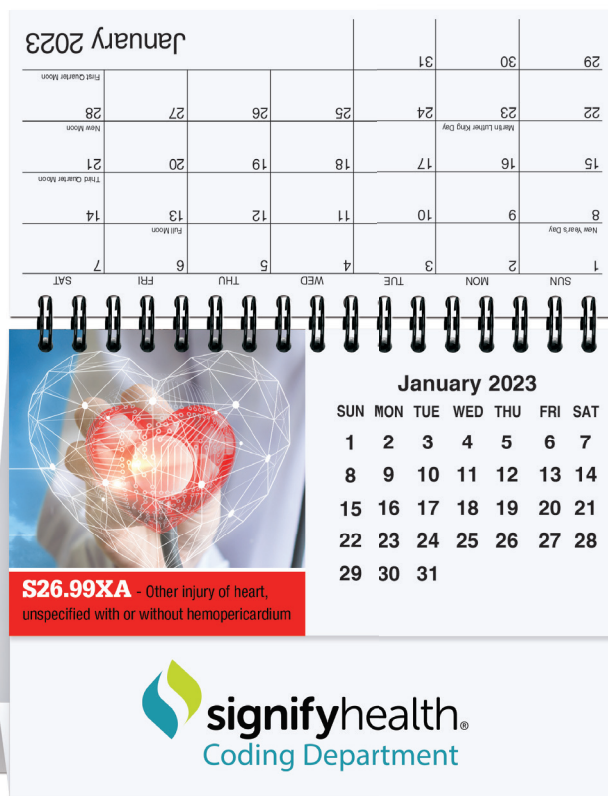
Flat Size for Mailing: 8 3/4 x 5 3/4

Cover Sheet: Your photo printed full color on 80 lb. gloss cover.

Calendar Sheets: 80 lb. gloss text, 12 calendar sheets, front month at a glance and back month at a glance with room to write. 12 custom photos printed full color. Calendar in black only. Back of the last calendar sheet has a year at a glance calendar for the current year and the next year.

TC4 Easel Back: White cover stock with company logo and information printed in one to full color on two sides. Pre-scored back folds into an easel to set on a desk. Easel back contains "Emergency Phone Numbers" and "Future Planning."

Binding: Black wire-o.



TC4 - 5 13/16 x 4 1/2

item	size	100	250	500	1000
TC4	5 13/16 x 4 1/2	6.83	4.49	3.60	2.92
TC5	8 3/4 x 4	7.03	4.71	3.80	3.19

(4R)

Easel Back Calendars



EDC14 - Full Color



Easel Back



Back Panel



• Get double the exposure with a free imprint on the back panel

Front Panel - Top



Front Panel - Bottom (behind calendar pad)



EDC1 - Foil Stamped



Colors shown are a printed representation. Request swatch for exact color.

Foil Stamped

Item: EDC1
Size: 6 1/4 x 6 3/8
Calendar Pad Size: 6 x 4 1/2
Imprint Area: 5 7/8 x 1 1/8

Board: Heavyweight paperboard foil stamped in one standard color.

Standard Foil Colors: Gloss-Black, White, Ivory, Red, Green, Blue, Navy, Orange, Pink; Metallic-Silver, Gold, Copper, Red, Green, Blue.

Standard Features: December - December (13 months) calendar, includes American holidays and moon phases. Die cut easel back for table or desk.

Full Color

Item: EDC14
Size: 6 1/4 x 6 3/8
Calendar Pad Size: 6 x 4 1/2
Imprint Areas:
 Top Front Panel: 6 3/16 x 1 1/2
 Bottom (behind calendar): 6 3/16 x 4 3/4. Submit custom art or choose stock January 2022 calendar.
 Back Panel: 6 7/16 x 1 1/2

Board: 80 lb. coated cover printed full color with gloss coat, mounted to heavy black chipboard.

item		100	250	500	1000
EDC1	Foil Stamped	3.83	3.07	2.80	2.67
EDC14	Full Color	5.43	4.04	3.57	3.35

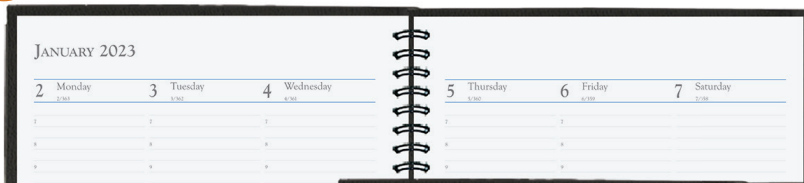
(4R)

Plate charge: \$65.00 per foil color (v)

Deluxe Time Managers



Colors shown are a printed representation. Request swatch for exact color.



• Monthly & Weekly Views All in One

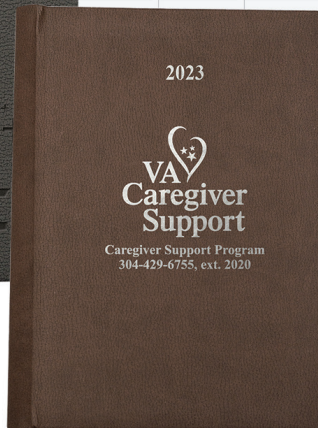


• Ribbon Marker



TMD7 - 7 x 10

Thunder Gray (404)



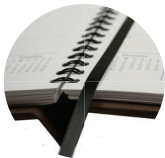
TMD5 - 5 x 8

Chocolate (403)

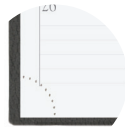
• Deluxe Padded Covers



• Handy pocket in back



• Concealed binding lays flat for easy writing



• Perforated corners for easy page marking



[Click to view Hamilton Refillable Time Managers](#)

Covers: Deluxe padded covers with wrapped edges, foil stamped in one standard color or debossed. Chocolate (403), Thunder Gray (404) and Cobalt Blue (408) covers are available burnished, which means the cover changes to a darker shade when debossed.

Inside Sheets: 14 months (December - January), monthly and weekly views printed in blue and gray on 60 lb. white offset with perforated page corners, reference pages, ribbon marker and white double pocket inserted in the back.

Binding: Wire-O bound in black on left side, concealed by a wraparound cover.

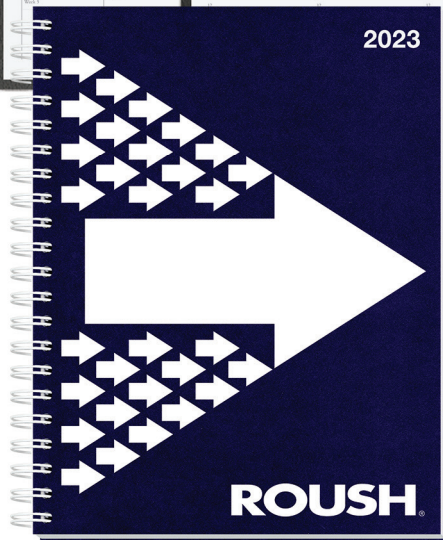
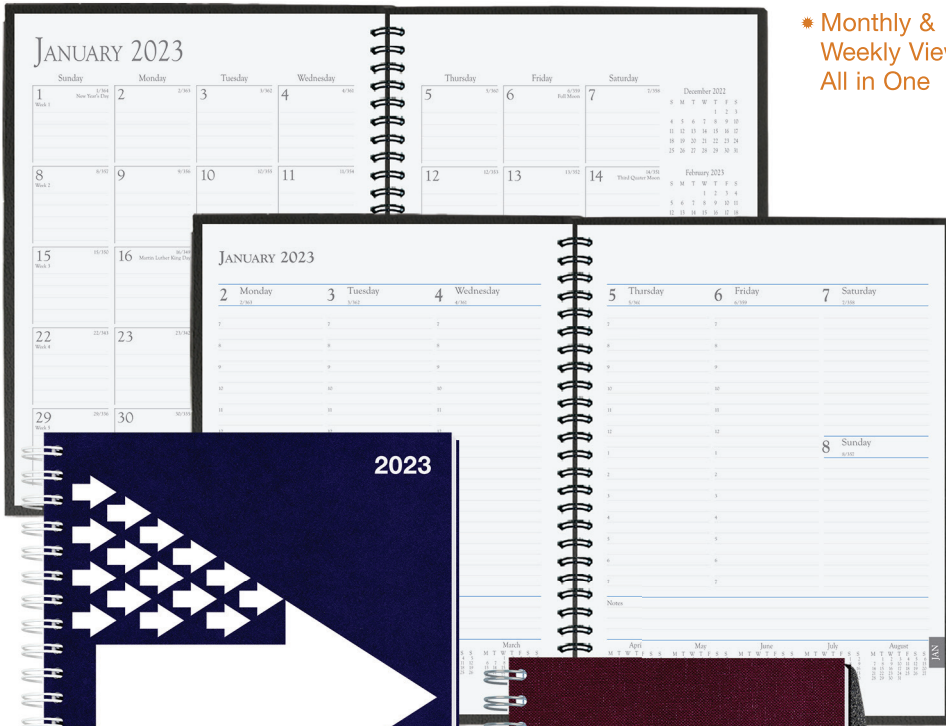
item	size	imprint area	50	100	250	500	1000
TMD5	5 x 7	16 sq. in.	13.88	12.52	11.55	11.01	10.56
TMD7	7 x 10	18 sq. in.	20.25	18.76	17.68	17.02	16.42

Plate charge: \$65.00 per foil color (v)

(5R)

Time Managers

* Monthly & Weekly Views All in One



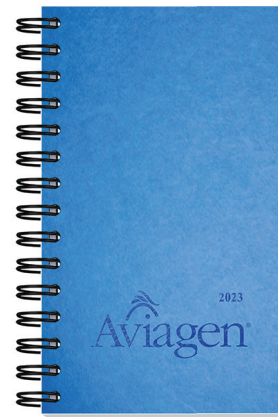
TM8 - 8 1/4 x 10 5/8 with oversized imprint

Navy (309)



TM7-PS - 7 x 10

Maroon (331)



TM5 - 5 x 8

Lapis (300)



Colors shown are a printed representation. Request swatch for exact color.

Click to view all Time Managers

Covers: Sturdy heavyweight stock, foil stamped in one standard color.

Pen Safe Back Cover (-PS): Black heavyweight pen safe back with elastic closure/bookmark and pen loop. A free Dynamic Pen comes inserted in loop. Choose black, frost, blue, or red.

Inside Sheets: 14 months (December - January), monthly and weekly views printed in blue and gray on 60 lb. white offset with perforated page corners, reference pages, and white double pocket inserted in the back.

Binding: Wire-O on left side in black, pewter or white.

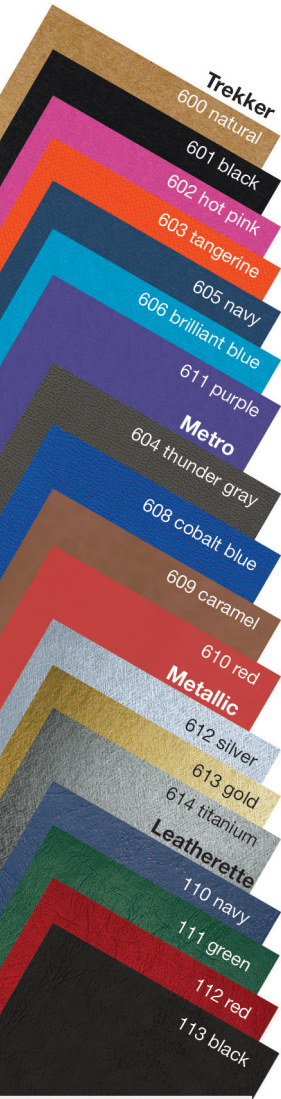
Standard Foil Colors: Gloss-Black, White, Ivory, Red, Green, Blue, Navy, Orange, Pink; Metallic-Silver, Gold, Copper, Red, Green, Blue.

item	size	imprint area	50	100	250	500	1000
TM5	5 x 8	16 sq. in.	7.77	6.99	6.46	6.14	5.83
TM5-PS	5 x 8	16 sq. in.	10.52	9.74	9.21	8.89	8.58
TM7	7 x 10	18 sq. in.	12.31	11.09	10.22	9.75	9.23
TM7-PS	7 x 10	18 sq. in.	15.06	13.84	12.97	12.50	11.98
TM8	8 1/4 x 10 5/8	18 sq. in.	12.74	11.48	10.58	10.08	9.55
TM8-PS	8 1/4 x 10 5/8	18 sq. in.	15.49	14.23	13.33	12.83	12.30

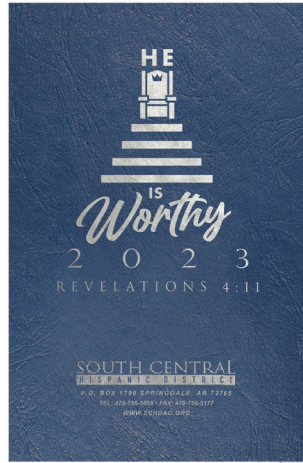
Plate charge: \$65.00 per foil color (v)

(5F)

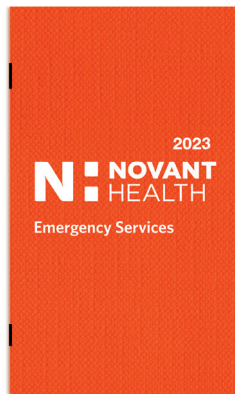
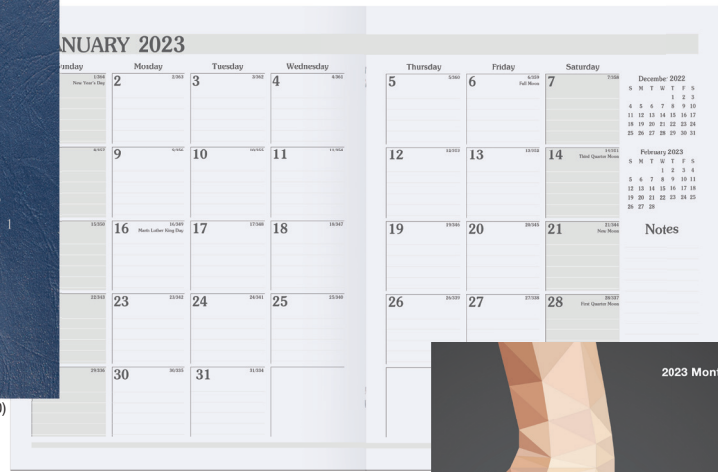
Monthly Planners



Colors shown are a printed representation. Request swatch for exact color.



MFP1 - 6 1/2 x 10 Navy (110)



MPC2 - 3 5/8 x 6 1/4 Tangerine (603)



MFP24 - 8 1/4 x 10 3/4

Cover: Flexible leatherette or textured paper, foil stamped in one standard color. Metro leather-like covers available blind debossed or foil stamped.

Standard Foil Colors: Gloss-Black, White, Ivory, Red, Green, Blue, Navy, Orange, Pink; Metallic-Silver, Gold, Copper, Red, Green, Blue.

item	size	imprint area	100	250	500	1000
MPC2	3 5/8 x 6 1/4	3 x 5	n/a	3.19	2.64	2.38
MFP1	6 1/2 x 10	18 sq. in.	4.52	4.15	3.77	3.40
MFP2	8 1/4 x 10 3/4	18 sq. in.	4.85	4.51	4.08	3.72

Plate charge: \$65.00 per foil color (v)

(4R)

Cover: White 10 pt. coated one side, printed full color with clear coat on outside front and/or back. Front and back copy can be same or different. Back will be blank unless otherwise requested.

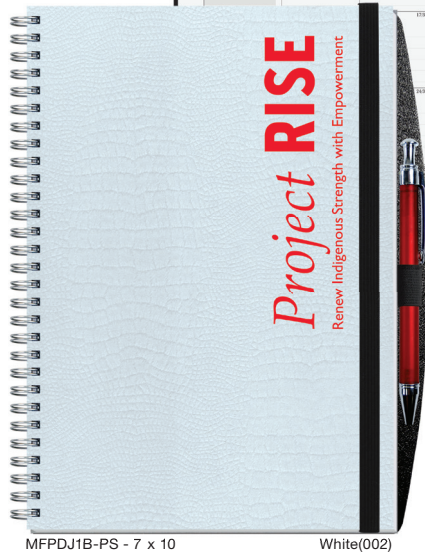
Inside Sheets: Monthly calendar view, white offset printed gray ink on two sides. No customization available. Includes 14 months (December – January).

Binding: Bound on the left side with two staples. Square corners.

item	size	100	250	500	1000
MPC1	3 5/8 x 6 1/4	n/a	3.19	2.64	2.38
MFP14	6 1/2 x 10	4.52	4.15	3.77	3.40
MFP24	8 1/4 x 10 3/4	4.85	4.51	4.08	3.72

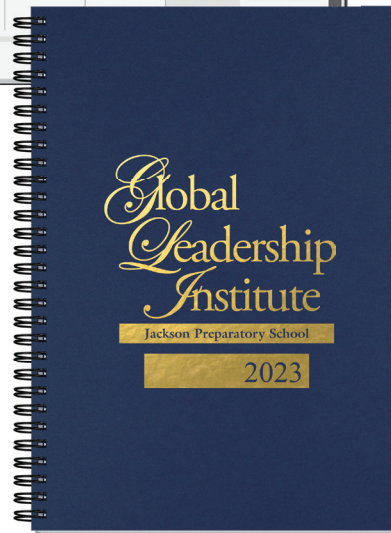
(4R)

Journal Planners



MFPDJ1B-PS - 7 x 10

White(002)

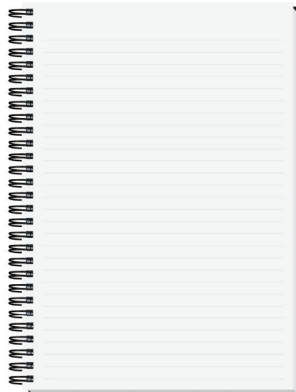


MFPDJ1 - 7 x 10

Royal Blue (006)



Colors shown are a printed representation. Request swatch for exact color.



Hybrid planner includes ruled sheets!

[Click to view Academic Planners](#)

Colors shown are a printed representation. Request swatch for exact color.

Embossed Cover

Cover: Heavyweight 80pt. paperboard with embossed alligator pattern, foil stamped in one standard color.

Back Cover (-PS): Black heavyweight pen safe back with elastic closure/bookmark and pen loop. A free Dynamic Pen comes inserted in loop. Choose black, frost, blue, or red.

Inside Sheets: 60 lb. white offset, 14 months (December - January) followed by 50 sheets printed with light gray rules on both sides.

item	size	imprint area	50	100	250	500
MFPDJ1B	7 x 10	18 sq. in.	16.21	15.74	14.78	14.10
MFPDJ1B-PS	7 x 10	18 sq. in.	18.84	18.36	17.41	16.73

(4R)

Plate charge: \$65.00 per foil color (v)

Smooth Cover

Cover: Sturdy heavyweight paperboard or poly, foil stamped in one standard color.

Back Cover (-PS): Black heavyweight pen safe back with elastic closure/bookmark and pen loop. A free Dynamic Pen comes inserted in loop. Choose black, frost, blue, or red.

Inside Sheets: 60 lb. white offset, 14 months (December - January) followed by 50 sheets printed with light gray rules on both sides.

Binding: Wire-O bound on left side in black. Pewter or white upon request.

item	size	imprint area	50	100	250	500
MFPDJ1	7 x 10	18 sq. in.	14.46	13.99	13.03	12.35
MFPDJ1-PS	7 x 10	18 sq. in.	17.08	16.61	15.66	14.97

(4R)

Plate charge: \$65.00 per foil color (v)

Weekly Planners



Colors shown are a printed representation. Request swatch for exact color.

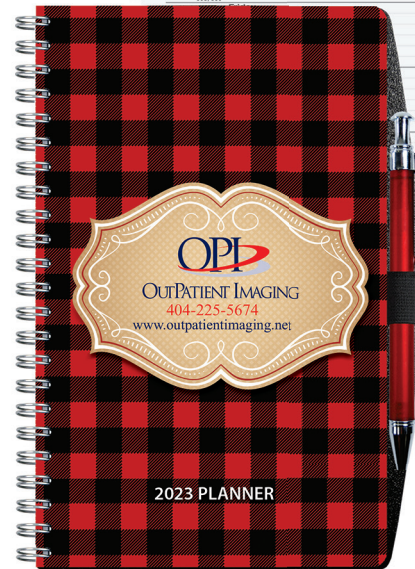


DC1F-PS - Flex

Black (113)

DC1P - Poly

Cherry Red (075)



DC14-PS - Full Color

Size: 5 1/4 x 8 1/4 **Foil Imprint Area:** 16 sq. in.

Poly Cover: 30 pt. poly front, foil stamped in one standard color. White heavyweight 24 pt. coated one side back. Poly back available.

Flex Covers: Navy, Green, Red, or Black leatherette, foil stamped in one standard color on front cover.

Full Color Cover: White 15 pt. coated one side, printed one to full color with clear coat. White 24 pt. back.

Pen Safe Back Cover (-PS): Black heavyweight back with elastic closure/bookmark and pen loop. A free Dynamic Pen comes inserted in loop. Choose Black, Blue, Red, or Frost.

Standard Foil Colors: Gloss-Black, White, Ivory, Red, Green, Blue, Navy, Orange, Pink; Metallic-Silver, Gold, Copper, Red, Green, Blue.

Inside Sheets: January - December week at a glance calendar sheets with space for notes.

Binding: Wire-O bound on left side in black, pewter, or white.

item	description	100	250	500	1000
DC1P	poly cover	6.77	6.07	5.85	5.74
DC1P-PS	poly cover with pen safe back	9.64	8.97	8.74	8.64
DC1F	flex cover	6.44	5.74	5.52	5.40
DC1F-PS	flex cover with pen safe back	9.32	8.64	8.40	8.29
DC14	full color	6.47	6.18	5.80	4.77
DC14-PS	full color with pen safe back	9.37	9.06	8.69	7.66

Plate Charge: \$65.00 per foil color (v)

(4R)

Academic Weekly Planners

• Plastic Coil for Durability



• Monthly & Weekly Views
All in One

Size: 5 1/4 x 8 1/4

Poly Cover: 30 pt. poly front, foil stamped in one standard color. See colors page 14. White heavyweight 24 pt. back. See options for poly back.

Flex Covers: Navy, Green, Red, or Black leatherette, foil stamped in one standard color on front cover.

Full Color Covers: White 15 pt. coated one side, printed one to full color with clear coat. White heavyweight 24 pt. back. Imprint not available.

Pen Safe Back Cover (-PS): Black heavyweight back with elastic closure/bookmark and pen loop. A free Dynamic Pen comes inserted in loop. Choose Black, Blue, Red, or Frost.

Standard Foil Colors: Gloss-Black, White, Ivory, Red, Green, Blue, Navy, Orange, Pink; Metallic-Silver, Gold, Copper, Red, Green, Blue.

Inside Sheets: August-August (13 months) one week per two page spread. Includes month at a glance pages at the beginning of each month.

Binding: Plastic coil bound on left side in black. White available upon request.

[Click to view more Academic Planners](#)

item	description	imprint area	100	250	500	1000
DC2P	poly cover	16 sq. in.	7.71	6.96	6.69	6.57
DC2P-PS	poly with pen safe back	16 sq. in.	10.46	9.71	9.44	9.32
DC2F	flex cover	16 sq. in.	7.33	6.57	6.30	6.19
DC2F-PS	flex with pen safe back	16 sq. in.	10.08	9.32	9.05	8.94
DC24	full color	4 7/8 x 7 3/4	6.04	5.76	5.41	5.29
DC24-PS	full color with pen safe back	4 7/8 x 7 3/4	8.79	8.51	8.16	8.04

Plate charge: \$65.00 per foil color (v)

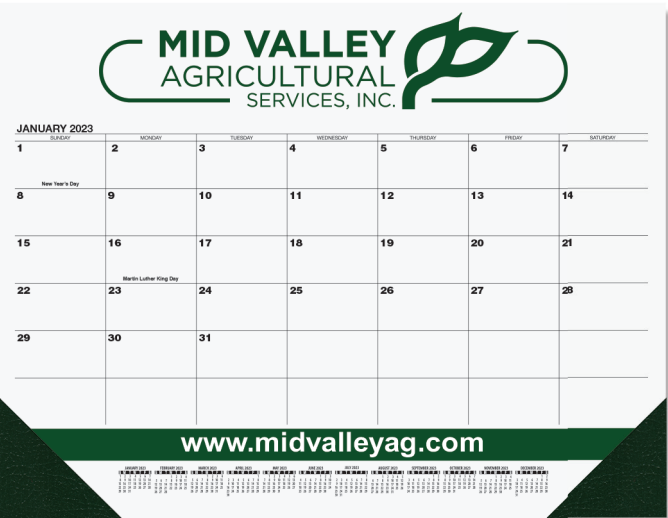
Calendar Desk Pads

Size: 21 3/4 x 17

• FREE hole punch



Item DDP3A - Blue and Black calendar



Item DDP3B - Black calendar



Item DDP3C - Red and Black calendar

3 Step Ordering

(see details page 19)

- 1 Layout
- 2 Ink Color
- 3 Corner Color

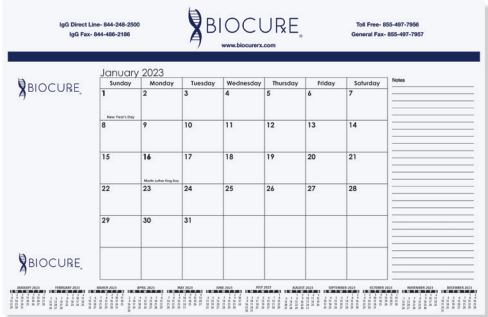
- FREE 13th Month
- FREE Phantom Imprint
- MORE Corner Colors
- FREE Hole Punch
- EXCLUSIVE Corner Imprint Option

Leatherette Corner Colors



Colors shown are a printed representation. Request swatch for exact color.

Click to view small calendar desk pads



Item CDP1B

Optional Corner Imprint

Calendar Desk Pads

with Julian and Contractor Dates

Size: 21 3/4 x 17

602.424.7200
WWW.AMERICANTITLESERVICEAGENCY.COM
Above All Else...Service!

AMERICAN TITLE SERVICE AGENCY

PAYMENT CALCULATOR

Rate	30 Year	30 Year
5.000	4.500	4.000
5.250	4.750	4.250
5.500	5.000	4.500
5.750	5.250	4.750
6.000	5.500	5.000
6.250	5.750	5.250
6.500	6.000	5.500
6.750	6.250	5.750
7.000	6.500	6.000
7.250	6.750	6.250
7.500	7.000	6.500
7.750	7.250	6.750
8.000	7.500	7.000
8.250	7.750	7.250
8.500	8.000	7.500
8.750	8.250	7.750
9.000	8.500	8.000
9.250	8.750	8.250
9.500	9.000	8.500
9.750	9.250	8.750
10.000	9.500	9.000
10.250	9.750	9.250
10.500	10.000	9.500
10.750	10.250	9.750
11.000	10.500	10.000
11.250	10.750	10.250
11.500	11.000	10.500
11.750	11.250	10.750
12.000	11.500	11.000
12.250	11.750	11.250
12.500	12.000	11.500
12.750	12.250	11.750
13.000	12.500	12.000
13.250	12.750	12.250
13.500	13.000	12.500
13.750	13.250	12.750
14.000	13.500	13.000
14.250	13.750	13.250
14.500	14.000	13.500
14.750	14.250	13.750
15.000	14.500	14.000
15.250	14.750	14.250
15.500	15.000	14.500
15.750	15.250	14.750
16.000	15.500	15.000
16.250	15.750	15.250
16.500	16.000	15.500
16.750	16.250	15.750
17.000	16.500	16.000
17.250	16.750	16.250
17.500	17.000	16.500
17.750	17.250	16.750
18.000	17.500	17.000
18.250	17.750	17.250
18.500	18.000	17.500
18.750	18.250	17.750
19.000	18.500	18.000
19.250	18.750	18.250
19.500	19.000	18.500
19.750	19.250	18.750
20.000	19.500	19.000
20.250	19.750	19.250
20.500	20.000	19.500
20.750	20.250	19.750
21.000	20.500	20.000
21.250	20.750	20.250
21.500	21.000	20.500
21.750	21.250	20.750
22.000	21.500	21.000
22.250	21.750	21.250
22.500	22.000	21.500
22.750	22.250	21.750
23.000	22.500	22.000
23.250	22.750	22.250
23.500	23.000	22.500
23.750	23.250	22.750
24.000	23.500	23.000
24.250	23.750	23.250
24.500	24.000	23.500
24.750	24.250	23.750
25.000	24.500	24.000
25.250	24.750	24.250
25.500	25.000	24.500
25.750	25.250	24.750
26.000	25.500	25.000
26.250	25.750	25.250
26.500	26.000	25.500
26.750	26.250	25.750
27.000	26.500	26.000
27.250	26.750	26.250
27.500	27.000	26.500
27.750	27.250	26.750
28.000	27.500	27.000
28.250	27.750	27.250
28.500	28.000	27.500
28.750	28.250	27.750
29.000	28.500	28.000
29.250	28.750	28.250
29.500	29.000	28.500
29.750	29.250	28.750
30.000	29.500	29.000
30.250	29.750	29.250
30.500	30.000	29.500
30.750	30.250	29.750
31.000	30.500	30.000
31.250	30.750	30.250
31.500	31.000	30.500
31.750	31.250	30.750
32.000	31.500	31.000
32.250	31.750	31.250
32.500	32.000	31.500
32.750	32.250	31.750
33.000	32.500	32.000
33.250	32.750	32.250
33.500	33.000	32.500
33.750	33.250	32.750
34.000	33.500	33.000
34.250	33.750	33.250
34.500	34.000	33.500
34.750	34.250	33.750
35.000	34.500	34.000
35.250	34.750	34.250
35.500	35.000	34.500
35.750	35.250	34.750
36.000	35.500	35.000
36.250	35.750	35.250
36.500	36.000	35.500
36.750	36.250	35.750
37.000	36.500	36.000
37.250	36.750	36.250
37.500	37.000	36.500
37.750	37.250	36.750
38.000	37.500	37.000
38.250	37.750	37.250
38.500	38.000	37.500
38.750	38.250	37.750
39.000	38.500	38.000
39.250	38.750	38.250
39.500	39.000	38.500
39.750	39.250	38.750
40.000	39.500	39.000
40.250	39.750	39.250
40.500	40.000	39.500
40.750	40.250	39.750
41.000	40.500	40.000
41.250	40.750	40.250
41.500	41.000	40.500
41.750	41.250	40.750
42.000	41.500	41.000
42.250	41.750	41.250
42.500	42.000	41.500
42.750	42.250	41.750
43.000	42.500	42.000
43.250	42.750	42.250
43.500	43.000	42.500
43.750	43.250	42.750
44.000	43.500	43.000
44.250	43.750	43.250
44.500	44.000	43.500
44.750	44.250	43.750
45.000	44.500	44.000
45.250	44.750	44.250
45.500	45.000	44.500
45.750	45.250	44.750
46.000	45.500	45.000
46.250	45.750	45.250
46.500	46.000	45.500
46.750	46.250	45.750
47.000	46.500	46.000
47.250	46.750	46.250
47.500	47.000	46.500
47.750	47.250	46.750
48.000	47.500	47.000
48.250	47.750	47.250
48.500	48.000	47.500
48.750	48.250	47.750
49.000	48.500	48.000
49.250	48.750	48.250
49.500	49.000	48.500
49.750	49.250	48.750
50.000	49.500	49.000
50.250	49.750	49.250
50.500	50.000	49.500
50.750	49.750	49.250
51.000	50.000	49.500
51.250	50.250	49.750
51.500	50.500	50.000
51.750	50.750	50.250
52.000	51.000	50.500
52.250	51.250	50.750
52.500	51.500	51.000
52.750	51.750	51.250
53.000	52.000	51.500
53.250	52.250	51.750
53.500	52.500	52.000
53.750	52.750	52.250
54.000	53.000	52.500
54.250	53.250	52.750
54.500	53.500	53.000
54.750	53.750	53.250
55.000	54.000	53.500
55.250	54.250	53.750
55.500	54.500	54.000
55.750	54.750	54.250
56.000	55.000	54.500
56.250	55.250	54.750
56.500	55.500	55.000
56.750	55.750	55.250
57.000	56.000	55.500
57.250	56.250	55.750
57.500	56.500	56.000
57.750	56.750	56.250
58.000	57.000	56.500
58.250	57.250	56.750
58.500	57.500	57.000
58.750	57.750	57.250
59.000	58.000	57.500
59.250	58.250	57.750
59.500	58.500	58.000
59.750	58.750	58.250
60.000	59.000	58.500
60.250	59.250	58.750
60.500	59.500	59.000
60.750	59.750	59.250
61.000	60.000	59.500
61.250	60.250	59.750
61.500	60.500	60.000
61.750	60.750	60.250
62.000	61.000	60.500
62.250	61.250	60.750
62.500	61.500	61.000
62.750	61.750	61.250
63.000	62.000	61.500
63.250	62.250	61.750
63.500	62.500	62.000
63.750	62.750	62.250
64.000	63.000	62.500
64.250	63.250	62.750
64.500	63.500	63.000
64.750	63.750	63.250
65.000	64.000	63.500
65.250	64.250	63.750
65.500	64.500	64.000
65.750	64.750	64.250
66.000	65.000	64.500
66.250	65.250	64.750
66.500	65.500	65.000
66.750	65.750	65.250
67.000	66.000	65.500
67.250	66.250	65.750
67.500	66.500	66.000
67.750	66.750	66.250
68.000	67.000	66.500
68.250	67.250	66.750
68.500	67.500	67.000
68.750	67.750	67.250
69.000	68.000	67.500
69.250	68.250	67.750
69.500	68.500	68.000
69.750	68.750	68.250
70.000	69.000	68.500
70.250	69.250	68.750
70.500	69.500	69.000
70.750	69.750	69.250
71.000	70.000	69.500
71.250	70.250	69.750
71.500	70.500	70.000
71.750	70.750	70.250
72.000	71.000	70.500
72.250	71.250	70.750
72.500	71.500	71.000
72.750	71.750	71.250
73.000	72.000	71.500
73.250	72.250	71.750
73.500	72.500	72.000
73.750	72.750	72.250
74.000	73.000	72.500
74.250	73.250	72.750
74.500	73.500	73.000
74.750	73.750	73.250
75.000	74.000	73.500
75.250	74.250	73.750
75.500	74.500	74.000
75.750	74.750	

Calendar Desk Pads

Size: 21 3/4 x 17

Paper Stock: 60 lb. white offset, printed one or two standard colors, one side. Padded at top with 13 sheets to a pad with chipboard back.

Corners: Two corners at bottom of pad. Leather-like material (see colors below). Optional imprinted corner foil stamped in one color. Choose gold, silver, copper, or white imprint. Chocolate, thunder gray, and cobalt blue may be debossed. See prices below.

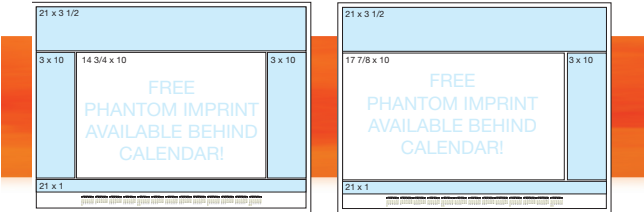
Standard Features: December – December (13 months) preprinted calendar. Twelve month reference calendar standard at bottom of each layout. Company logo and information printed in imprint areas shown.

[Click to view non-dated desk pads](#)

3 Step Ordering

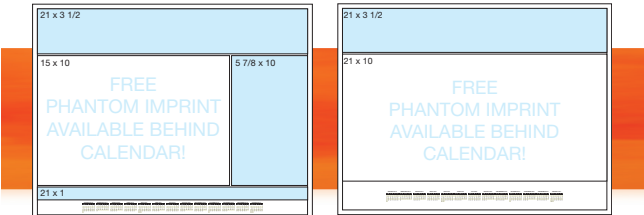
1 Layout 2 Ink Color 3 Corner Color

Calendar Layouts and Imprint Areas



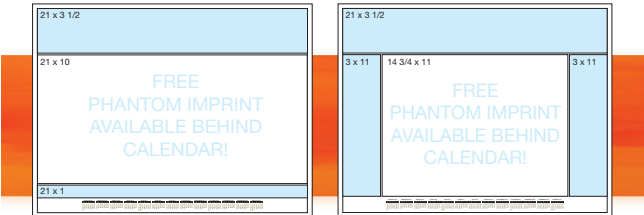
Preprinted Calendar Color:
Item DDP1A - Blue & Black
Item DDP1B - Black
Item DDP1C - Red & Black

Preprinted Calendar Color:
Item DDP4B - Black
Item DDP4D - Blue & Gold
Item CA212 - Blue & Red
with Julian & Contractor dates



Preprinted Calendar Color:
Item DDP2A - Blue & Black
Item DDP2B - Black
Item DDP2C - Red & Black

Preprinted Calendar Color:
Item DDP5B - Black
Item DDP5D - Blue & Gold
with Julian & Contractor dates



Preprinted Calendar Color:
Item DDP3A - Blue & Black
Item DDP3B - Black
Item DDP3C - Red & Black

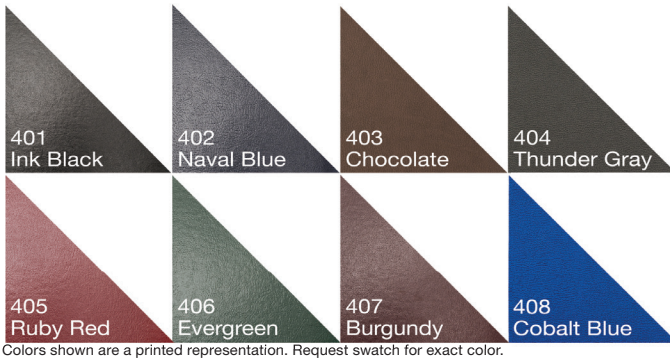
Preprinted Calendar Color:
Item DDP6D - Blue & Gold
with Julian & Contractor dates

Standard Ink Colors



Colors shown are a full color printed representation. Consult Pantone book for exact color.

Leatherette Corner Colors



Colors shown are a printed representation. Request swatch for exact color.

Imprint	100	250	500	1000
One Color	8.47	6.33	4.85	4.68
Two Colors	9.02	6.90	5.40	5.24
Imprinted Corner (1 color)	0.92	0.58	0.44	0.39
(4R)				
options	add to base price			
Ink colors other than standard	\$65.00 ea			
2 hole punch	FREE 20¢ per pad			
2 additional corners	90¢ per pad			
Imprinted corner plate charge	\$65.00			
(V)				

Almanac Calendars

— Quality Building Products —

Littrell Lumber Mill, Inc.

Old Moulton Road, SW — DECATUR, ALABAMA 35002
PHONE: (256) 355-1468

JANUARY 2023						
SUNDAY	MONDAY	TUESDAY	WEDNESDAY	THURSDAY	FRIDAY	SATURDAY
1 New Year's Day	2	3	4	5	6	7
8	9	10	11	12	13	14
15	16	17	18	19	20	21
22	23	24	25	26	27	28
29	30					

SUMMERFIELD FEED MILL, INC.

PHONE: 643-4776

Summerfield, NC 27358

Hardware - Fertilizers - Chemicals - Feeds & Seeds
Pine Needles - Mulch - Straw

JANUARY 2023						
SUNDAY	MONDAY	TUESDAY	WEDNESDAY	THURSDAY	FRIDAY	SATURDAY
1	2	3	4	5	6	7
8	9	10	11	12	13	14
15	16	17	18	19	20	21
22	23	24	25	26	27	28
29	30					

301 - 11 x 16 3/4

Item: 303
Size: 11 x 16 3/4
Imprint Area: 10 x 3 3/4

Paper Stock: 6 sheets, 50 lb. white offset, black imprint.

Standard Features: 12 month (January - December) two-sided calendar filled with weather predictions, sunrise/sunset times, zodiacs, moon phases, best fishing days, weights and measures, farm records, historical events, and general information. Black tin at top.

Item	250	500	1000	2500
301	2.20	1.78	1.47	1.34
303	2.82	2.34	2.04	1.85

(4R)

Pfeifer Hardware

124 E. Wyandot Avenue
Upper Sandusky, OH
Phone: 419-294-2271

Do it Best
All Across America

Do it Best
Quality Paints

Hours: Mon - Fri. 7:30 - 5:30 Sat. 7:30 - 2:00

Shop Online: www.myhardware.doitbest.com

JANUARY 2023						
SUN	MON	TUE	WED	THU	FRI	SAT
1 NEW YEAR'S DAY	2	3	4	5	6	7
8	9	10	11	12	13	14
15	16 MARTIN L. KING, JR.	17	18	19	20	21
22	23	24	25	26	27	28
29	30	31				

MW23 - 12 1/4 x 18 5/8

Item: MW23
Size: 12 1/4 x 18 5/8
Imprint Area: 10 1/2 x 3 3/4

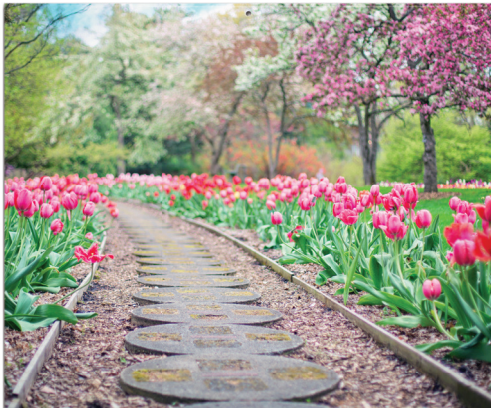
Paper Stock: 7 sheets, 50 lb. white offset, black imprint.

Standard Features: 12 month (January - December) two-sided calendar filled with weather predictions, sunrise/sunset times, zodiacs, moon phases, best fishing days, weights and measures, farm records, historical events, and general information. Black tin at top.

Item	100	250	500	1000
MW23	5.09	4.18	3.13	2.78

(4R)

Almanac Calendars



Flower — Carnation							BIRTHSTONE — Garnet						
JANUARY 2023													
Sunday	Monday	Tuesday	Wednesday	Thursday	Friday	Saturday	Sunday	Monday	Tuesday	Wednesday	Thursday	Friday	Saturday
1	2	3	4	5	6	7	8	9	10	11	12	13	14
15	16	17	18	19	20	21	22	23	24	25	26	27	28
29	30	31	DECEMBER 2022		FEBRUARY		Farm and Garden		Fishing				

Adecock Funeral Home
 2226 LILLINGTON HWY.
 SPRING LAKE, NC 28390
 910 497-0171

203-F - 8 5/8 x 16

Spring



Flower — Carnation							BIRTHSTONE — Garnet						
JANUARY 2023													
Sunday	Monday	Tuesday	Wednesday	Thursday	Friday	Saturday	Sunday	Monday	Tuesday	Wednesday	Thursday	Friday	Saturday
1	2	3	4	5	6	7	8	9	10	11	12	13	14
15	16	17	18	19	20	21	22	23	24	25	26	27	28
29	30	31	DECEMBER 2022		FEBRUARY		Farm and Garden		Fishing				

Season's Greetings 2023

North Georgia
National Bank

203-S - 8 5/8 x 16

Farmland

203 Cover View

Weather Vane

Item: 203-F (Farmland)

Item: 203-S (Spring)

Size: 8 5/8 x 16 (open)

8 5/8 x 9 (closed)

Imprint Area: 7 3/4 x 1 1/4

Paper Stock: Front Cover: 65 lb. cover. Pad: 50 lb. white offset. Black imprint at bottom of back sheet.

Standard Features: 12 month (January - December) calendar printed red and black filled with weather predictions, sunrise/sunset times, zodiacs, moon phases, best fishing days, best planting days, and general information. Full color stock photo inside cover. Season's Greetings on outside front cover.

item	image	250	500	1000	2500
203-F	Farmland	1.89	1.68	1.68	1.50
203-S	Spring	1.89	1.68	1.68	1.50

(4R)

Monthly Wall Calendars



148 - 8 x 14

US Male



362436 - 8 x 14

Centerfold



Item: 148 - US Male
 362436 - Centerfold
Size: 8 x 14
Imprint Area: 6 3/4 x 1 1/2

Paper Stock: 12 sheets, 80 lb. gloss text. 12 photographs printed full color with company logo/tagline printed in black on bottom of extended back sheet.

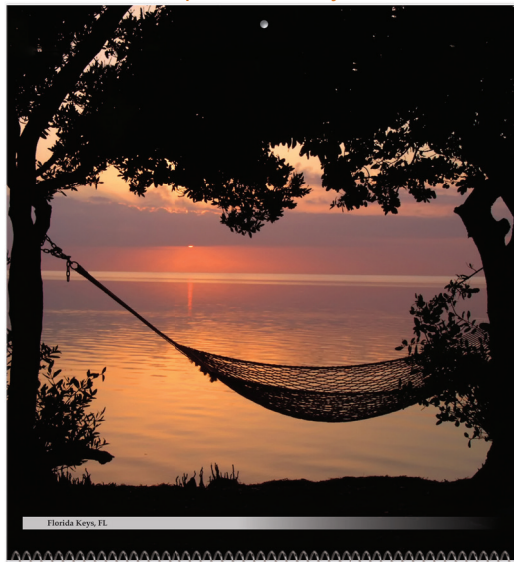
Standard Features: January-December (12 months) calendar printed in black. Coil bound with silver wire. Hole at top for hanging.

item	theme	100	250	500	1000
148	US Male	4.68	4.44	4.20	4.05
362436	Centerfold	4.68	4.44	4.20	4.05

(4R)

Executive Wall Calendars

• Imprint on Every Sheet



Florida Keys, FL

January 2023

Sun	Mon	Tues	Wed	Thurs	Fri	Sat
1 New Year's Day	2	3	4	5	6	7
8	9	10	11	12	13	14
15	16 Martin Luther King Day	17	18	19	20	21
22	23	24	25	26	27	28
29	30	31				

DECEMBER: S M T W T F S 1 2 3 4 5 6 7 8 9 10 11 12 13 14 15 16 17 18 19 20 21 22 23 24 25 26 27 28 29 30 31
 FEBRUARY: S M T W T F S 1 2 3 4 5 6 7 8 9 10 11 12 13 14 15 16 17 18 19 20 21 22 23 24 25 26 27 28

SOUTHERN METALCRAFT, INC.
 Quality Metal Fabrication Since 1974
 2675 Lithonia Industrial Blvd. Lithonia, GA 30058
 Phone: 770-482-2923 Fax: 770-482-6292
 www.southernmetalcraft.com

411 - 9 X 19 1/2 Sunrise/Sunset



Antelope Island State Park, UT

January 2023

Sun	Mon	Tues	Wed	Thurs	Fri	Sat
1 New Year's Day	2	3	4	5	6	7
8	9	10	11	12	13	14
15	16 Martin Luther King Day	17	18	19	20	21
22	23	24	25	26	27	28
29	30	31				

DECEMBER: S M T W T F S 1 2 3 4 5 6 7 8 9 10 11 12 13 14 15 16 17 18 19 20 21 22 23 24 25 26 27 28 29 30 31
 FEBRUARY: S M T W T F S 1 2 3 4 5 6 7 8 9 10 11 12 13 14 15 16 17 18 19 20 21 22 23 24 25 26 27 28

GARMIN | We are Product Support

211 - 9 X 19 1/2 Countryside Charm



Item: 211 - Countryside Charm
 411 - Sunrise/Sunset

Size: 9 x 19 1/2

Imprint Area: 7 3/4 x 1 1/4

Paper Stock: 12 sheets, 80 lb. gloss cover. 12 photographs printed full color, company logo/tagline printed in black on bottom of each sheet.

Standard Features: January-December (12 months) calendar printed in black. Coil bound with silver wire. Hole at top for hanging.

item	theme	100	250	500	1000
211	Countryside Charm	7.64	6.98	6.33	5.68
411	Sunrise/Sunset	7.64	6.98	6.33	5.68

(4R)

Commercial Calendars



1818 - 18 x 18 3/4

THURSTON SPRING SERVICE

Incorporated

PHONE: (804) 232-8981
TOLL FREE: (800) 892-8981
FAX: (804) 232-9202

ADDRESS: 314 WEST SEVENTH STREET
RICHMOND, VA 23224
SOUTH END OF THE
MANCHESTER BRIDGE

SPRING SALES AND SERVICE
FRONT END ALIGNMENTS AND WHEEL BALANCING FOR ALL CARS AND TRUCKS
AXLES SLEEVED AND STRAIGHTENED
WALKING BEAM BUSHINGS INSTALLED
BOAT TRAILER SPRINGS AND U-BOLTS CUSTOM MADE

January 2023

SUN	MON	TUE	WED	THU	FRI	SAT
1	2	3	4	5	6	7
New Year's Day 1/1/24	2/8/23	3/8/23	4/8/21	5/8/20	Full Moon 6/30/23	7/5/23
8	9	10	11	12	13	14
8/22/23	9/25/23	10/25/23	11/25/23	12/22/23	1/19/24	2/16/24
15	16	17	18	19	20	21
15/22/23	16/23/23	17/23/23	18/24/23	19/24/23	20/24/23	21/25/23
22	23	24	25	26	27	28
22/23/23	23/24/23	24/24/23	25/24/23	26/25/23	27/25/23	28/26/23
29	30	31				
29/24/23	30/25/23	31/25/23				

MW21 - 18 x 25

Insurance of All Kinds

Rob O'Feilly Nolan Andrews
Leland, Mississippi 38756
Phone 662-686-4441

January 2023

SUN	MON	TUE	WED	THU	FRI	SAT
1	2	3	4	5	6	7
New Year's Day 1/1/24	2/8/23	3/8/23	4/8/21	5/8/20	Full Moon 6/30/23	7/5/23
8	9	10	11	12	13	14
8/22/23	9/25/23	10/25/23	11/25/23	12/22/23	1/19/24	2/16/24
15	16	17	18	19	20	21
15/22/23	16/23/23	17/23/23	18/24/23	19/24/23	20/24/23	21/25/23
22	23	24	25	26	27	28
22/23/23	23/24/23	24/24/23	25/24/23	26/25/23	27/25/23	28/26/23
29	30	31				
29/24/23	30/25/23	31/25/23				

MW22 - 12 1/4 x 18 1/2

Item: 1818
Size: 18 x 18 3/4
Imprint Area: 17 x 5 1/2 Top of Calendar
Paper Stock: 12 sheets, 50 lb. white offset, printed one or two standard colors.
Standard Ink Colors: PMS® 185-Red, Reflex Blue, 348-Green, Pantone Yellow, 021-Orange, 202-Burgundy, Black.
Standard Features: 12 month (January - December) preprinted calendar in black and red. Black tin at top with hanger.

item	imprint	100	250	500	1000
1818	One Color	9.48	6.91	5.12	5.00
1818	Two Colors	10.41	7.28	5.31	5.09

(4R)

Item: MW21
Size: 18 x 25
Imprint Area: 17 x 8

Paper Stock: 13 sheets, 50 lb. white offset, printed one or two standard colors. Black tin at top with hanger.

Standard Ink Colors: PMS® 185-Red, Reflex Blue, 348-Green, Pantone Yellow, 021-Orange, 202-Burgundy, Black.

Standard Features: 13 month (December - December) preprinted calendar includes American and major Canadian holidays, moon phases, and Julian dates. Black tin at top with hanger.

item	imprint	100	250	500	1000
MW21	One Color	9.33	8.38	7.46	6.89
MW21	Two Colors	10.33	8.79	7.65	7.00
MW22	One Color	6.77	5.21	4.40	4.06
MW22	Two Colors	7.78	5.61	4.61	4.17

(4R)

Commercial Calendars



872 Park Road | Blandon, PA 19510 | 610-926-4567 | StoneyCreekRentals.com

January 2023

SUN	MON	TUE	WED	THU	FRI	SAT
1	2	3	4	5	6	7
				12	13	14
			19	20	21	
			26	27	28	

Help Your Patients Live Their Best Life with Better Life Home Health

Better Life HOME HEALTH

- Better Life's team of experts keep your patients at home, and out of the hospital, by coordinating their physical, occupational, speech therapy, and in-home nursing needs
- Better Life is a Five-Star rated agency by the Centers for Medicare & Medicaid (CMS)
- Better Life is a Five-Star rated agency by the Community Health Accreditation Program (CHAP)
- Better Life provides quality experienced home health care and accepts Medicare and private pay insurance
- Better Life is a non-profit with a longstanding reputation as a valued member of the community since 2009

Call 352.307.0073 today, or as a referral to 352.307.2073.

For more information, visit BetterLifeHH.com

15400 E. US Highway 441, Suite 3
Sumner Valley, FL 34481

January 2023

SUN	MON	TUE	WED	THU	FRI	SAT
1	2	3	4	5	6	7
8	9	10	11	12	13	14
15	16	17	18	19	20	21
22	23	24	25	26	27	28
29	30	31				

MW1C - 12 x 17 3/8

January 2023

SUN	MON	TUE	WED	THU	FRI	SAT
				12	13	14
			19	20	21	
			26	27	28	

MW3C - 17 x 24

Pelican Construction Supplies
"your concrete accessory source"
 305 23rd Street, Kenner, LA 70062
 Ph: 504-468-1234 • Cell: 504-382-1614 • Fax: 504-468-1211

JANUARY 2023

SUNDAY	MONDAY	TUESDAY	WEDNESDAY	THURSDAY	FRIDAY	SATURDAY
1 New Year's Day	2	3	4	5	6	7
8	9	10	11	12	13	14
15	16 Martin Luther King Day	17	18	19	20	21
22	23	24	25	26	27	28
29	30	31	MEMOS			

1825 - 19 x 25

Item: MW1C
Size: 12 x 17 3/8
Imprint Area: 12 x 8 1/8

Item: MW3C
Size: 17 x 24
Imprint Area: 17 x 12

Image Paper Stock: Gloss cover, printed one to full color. Submit your own custom artwork or use one of our stock photos. Exact PMS matches not available.

Calendar Pad: January – December (12 months) calendar printed in black and red ink only on white offset. Includes American holidays, moon phases, and Julian dates. Last sheet features two years at a glance.

Standard Features: Calendar pad stapled to bottom of image sheet. Black tin at top with hanger.

item	imprint area	100	250	500	1000
MW1C	12 x 8 1/8	3.98	3.49	3.25	2.75
MW3C	17 x 12	5.74	5.40	4.65	4.09

(4R)

Item: 1825
Size: 19 x 25
Imprint Area: 17 1/2 x 7 Top of Calendar

Image Paper Stock: Matte cover printed one to full color.

Calendar Pad: 12 sheets, 50 lb. white offset printed 185 Red and Reflex Blue.

Standard Features: Calendar pad stapled to bottom of image sheet. Black tin at top with hanger.

item	imprint area	100	250	500	1000
1825	17 1/2 x 7 1/2	8.30	6.20	4.98	4.31

(4R)

Contractor Calendars

- Six pre-printed color combinations or choose your own custom color.



MW20A - 18 x 25

Process Blue & Black



MW20C - 18 x 25

165-Red & Black



WA107

Patriotic



MW20B

Black



MW20T 165-Orange & Black



MW20G 354-Green & Black



MW20Z

Custom

- Bars printed to match imprint

- Item: MW20A (Process Blue and Black calendar)
- Item: MW20B (Black calendar)
- Item: MW20C (185-Red and Black calendar)
- Item: MW20G (354-Green and Black calendar)
- Item: MW20T (165-Orange and Black calendar)
- Item: MW20Z (Custom Color calendar)
- Item: WA107 Patriotic (Reflex Blue and 485 Red)
- Size: 18 x 25
- Imprint Area: 17 x 4 1/2

Paper Stock: 13 sheets, 50 lb. white offset, printed one or two standard colors. Black tin at top with hanger.

Standard Ink Colors: PMS® 185-Red, 485-Red, Reflex Blue, 348-Green, 354-Green, Pantone Yellow, 021-Orange, 165-Orange, 202-Burgundy, Black.

Standard Features: 13 month (December - December) preprinted calendar includes memo lines in date blocks along with symbols denoting days elapsed and remaining in the year, work days remaining without Saturdays and Sundays, and work days remaining without Sundays. Includes American and major Canadian holidays and moon phases.

item	imprint	100	250	500	1000
MW20A-T / WA107	One Color	9.33	8.38	7.46	6.89
MW20A-T / WA107	Two Colors	10.33	8.79	7.65	7.00
MW20Z	One Color	10.33	8.79	7.66	7.00
MW20Z	Two Colors	11.33	9.20	7.87	7.11

(4R)



Three Months at a Glance Calendars

CONTOUR SCREW PRODUCTS, INC.

PRECISION MACHINING

BROWN & SHARPE TO 2 3/8" SWISS MACHINING TO (.787) MULTIPLE SPINDLE TO 2 1/4"
 CYLINDRICAL GRINDING HONING CNC MACHINING PUNCH PRESS
 CENTERLESS GRINDING BROACHING COMPLETE SECONDARY FACILITIES

3014 MALMO DRIVE, ARLINGTON HEIGHTS, IL 60005
(847) 357-1190 FAX (847) 357-1192
 EMAIL: SALES@CONTOURSCREW.COM

Providing Quality & Service Since 1978

DECEMBER						
Sunday	Monday	Tuesday	Wednesday	Thursday	Friday	Saturday
				1	2	3
4	5	6	7	8	9	10
11	12	13	14	15	16	17
18	19	20	21	22	23	24
25	26	27	28	29	30	31




JANUARY 2023						
Sunday	Monday	Tuesday	Wednesday	Thursday	Friday	Saturday
1	2	3	4	5	6	7
8	9	10	11	12	13	14
15	16	17	18	19	20	21
22	23	24	25	26	27	28
29	30	31				

FEBRUARY						
Sunday	Monday	Tuesday	Wednesday	Thursday	Friday	Saturday
			1	2	3	4
5	6	7	8	9	10	11
12	13	14	15	16	17	18
19	20	21	22	23	24	25
26	27	28				

MW30 - 12 1/4 x 25

ADVANCE COATINGS CO.

Gelcoats • Polyester Resins • Pigment Dispersions & Custom Formulations
 42 DEPOT ROAD • WESTMINSTER, MA 01473
 TEL: 978-874-5921 • 1-800-247-1117 • FAX: 978-874-2788
CLASS 1 & 2 FIRE RETARDANT RESINS
www.advancecoatings.com

DECEMBER						
Sunday	Monday	Tuesday	Wednesday	Thursday	Friday	Saturday
				1	2	3
4	5	6	7	8	9	10
11	12	13	14	15	16	17
18	19	20	21	22	23	24
25	26	27	28	29	30	31

JANUARY 2023						
Sunday	Monday	Tuesday	Wednesday	Thursday	Friday	Saturday
1	2	3	4	5	6	7
8	9	10	11	12	13	14
15	16	17	18	19	20	21
22	23	24	25	26	27	28
29	30	31				

FEBRUARY						
Sunday	Monday	Tuesday	Wednesday	Thursday	Friday	Saturday
			1	2	3	4
5	6	7	8	9	10	11
12	13	14	15	16	17	18
19	20	21	22	23	24	25
26	27	28				

Item: MW30

Size: 12 1/4 x 25

Imprint Area: 11 3/4 x 5 1/2

Paper Stock: 12 sheets, 50 lb. white offset, printed one or two standard colors. Black tin at top with hanger.

Standard Ink Colors: PMS® 185-Red, Reflex Blue, 348-Green, Pantone Yellow, 021-Orange, 202-Burgundy, Black.

Standard Features: 14 month (December - January) preprinted calendar shown three months per sheet. Current month includes memo space, American and major Canadian holidays, moon phases, and Julian dates. Black tin at top with hanger.

imprint	100	250	500	1000
One Color	8.98	7.21	5.81	5.10
Two Colors	9.97	7.61	6.01	5.20

(4R)

Three Months at a Glance Calendars



Small Calendar
Item: MW14
Size: Open 6 x 18 3/4
 Folds to 6 x 6 1/4
Imprint Area Top: 6 x 6



Small Calendar
Item: MW12 with apron
Size: Open 6 x 20 3/4
 Folds to 6 x 6 1/4
Imprint Areas:
 Top - 6 x 6
 Bottom - 5 1/2 x 1 3/4



Large Calendar
Item: MW15
Size: 10 3/4 x 33 3/4
 Folds to 10 3/4 x 9 3/4
Imprint Area Top: 10 3/4 x 8



Large Calendar
Item: MW13 with apron
Size: 10 3/4 x 35
 Folds to: 10 3/4 x 10 1/4
Imprint Areas:
 Top - 10 3/4 x 8
 Bottom - 10 1/4 x 1 1/2

Paper Board Stock: White stock coated one side, printed one to full color. Exact PMS matches not available.

Calendar Pad: Three 14 month (December - January) calendar pads printed in black and red ink only on white offset. Includes American holidays.

Standard Features: Calendar pads wire-o bound into board. Tearing off calendar sheets allows three months to be visible at one time.

Binding: Black Wire-O.

item	size	100	250	500	1000
MW12/14	small	7.41	7.22	7.11	6.93
MW13/15	large	9.48	9.16	9.04	8.82

(4R)

Weekly Wall Calendars



WCW4 - 9 X 12 1/4 Monday start

Full Color



WCW7 - 7 x 12 1/4 Sunday start

Full Color



WCW5 - 7 x 13 Sunday start

Foil Stamped

• Metal reinforced eyelet

Full Color

Item: WCW3 Sunday start

Item: WCW4 Monday start

Size: 9 x 12 1/4

Imprint Area Top: 7 3/4 x 2 1/2

Item: WCW7 Sunday start

Item: WCW6 Monday start

Size: 7 x 12 1/4

Imprint Area Top: 6 1/4 x 2 1/2

Foil Stamped

Item: WCW5 Sunday start

Item: WCW2 Monday start

Size: 7 x 13

Imprint Area: 2 1/2 x 6 1/4

Calendar Board: Heavyweight board with full color or foil stamped imprint.

Standard Features: Durable single rod design to prevent breakage.
WCW2/5 - Die cut easel back for table or desk included.

Calendar Sheets: Week at a glance with room to write.

Monday start - back of all sheets lined for notes.

Sunday start - miscellaneous information on back of all sheets.



• Save calendar pages and notes for future reference by flipping the page over the plastic bar.



• Optional die cut easel back for table or desk available.



item	100	250	500	750	1000
WCW2/5	6.06	5.87	5.70	5.60	5.44
WCW3/4/6/7	5.30	5.13	4.98	4.98	4.88

(5R)

Plate charge (WCW2/5): \$65.00 per foil color (v).

Daily Calendars



DD1 - 7 x 13

Foil Stamped



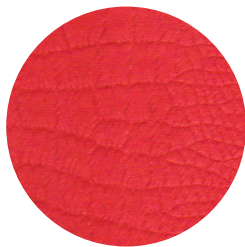
DD2 - 6 x 12 1/4

Full Color



DD3 - 9 x 12 1/4

Full Color



• New! Rich alligator embossing available. See options.

Item: DD1
Size: 7 x 13

Item: DD2
Size: 6 x 12 1/4

Item: DD3
Size: 9 x 12 1/4

Imprint Area: 5 3/4 x 5 1/4

365 day calendar pad mounted to heavyweight board. Available with full color or foil stamped imprint.

Calendar Pad: 4 1/8 x 5 calendar pad printed in black ink only on white offset. Refill pads available.

Standard Features: Calendar pad mounted to heavyweight board with white posts and four round corners.

item	size	imprint	100	250	500	1000
DD1	7 x 13	Foil Stamped*	12.08	10.15	10.02	9.76
DD2	6 x 12 1/4	Full Color	11.15	8.68	7.44	7.08
DD3	9 x 12 1/4	Full Color	13.72	12.38	10.14	9.97
DRP4 (refill pads - fits DD1, DD2 & DD3)			4.32	4.32	4.32	4.32
						(4R)

*Plate charge (DD1): \$65.00 per foil color (v)

option	add to base price
Alligator embossing	45c ea

(v)

Year-at-a-Glance Calendars

Boston, MA
617-561-1300

Chicago, IL
224-659-7450

Miami, FL
786-539-4996

**Your Complete
Global Logistics
Service Provider**

**RADIUS
INTERNATIONAL**

www.radiuscargo.com

2023 JANUARY 2023						
SUN	MON	TUE	WED	THU	FRI	SAT
1	2	3	4	5	6	7
8	9	10	11	12	13	14
15	16	17	18	19	20	21
22	23	24	25	26	27	28
29	30	31				

2023 FEBRUARY 2023						
SUN	MON	TUE	WED	THU	FRI	SAT
			1	2	3	4
5	6	7	8	9	10	11
12	13	14	15	16	17	18
19	20	21	22	23	24	25
26	27	28				

2023 MARCH 2023						
SUN	MON	TUE	WED	THU	FRI	SAT
			1	2	3	4
5	6	7	8	9	10	11
12	13	14	15	16	17	18
19	20	21	22	23	24	25
26	27	28	29	30	31	

2023 APRIL 2023						
SUN	MON	TUE	WED	THU	FRI	SAT
						1
2	3	4	5	6	7	8
9	10	11	12	13	14	15
16	17	18	19	20	21	22
23	24	25	26	27	28	29

2023 MAY 2023						
SUN	MON	TUE	WED	THU	FRI	SAT
						1
2	3	4	5	6	7	8
9	10	11	12	13	14	15
16	17	18	19	20	21	22
23	24	25	26	27	28	29

2023 JUNE 2023						
SUN	MON	TUE	WED	THU	FRI	SAT
					1	2
3	4	5	6	7	8	9
10	11	12	13	14	15	16
17	18	19	20	21	22	23
24	25	26	27	28	29	30

2023 JULY 2023						
SUN	MON	TUE	WED	THU	FRI	SAT
						1
2	3	4	5	6	7	8
9	10	11	12	13	14	15
16	17	18	19	20	21	22
23	24	25	26	27	28	29

2023 AUGUST 2023						
SUN	MON	TUE	WED	THU	FRI	SAT
			1	2	3	4
5	6	7	8	9	10	11
12	13	14	15	16	17	18
19	20	21	22	23	24	25
26	27	28	29	30	31	

2023 SEPTEMBER 2023						
SUN	MON	TUE	WED	THU	FRI	SAT
						1
2	3	4	5	6	7	8
9	10	11	12	13	14	15
16	17	18	19	20	21	22
23	24	25	26	27	28	29
30	31					

2023 OCTOBER 2023						
SUN	MON	TUE	WED	THU	FRI	SAT
						1
2	3	4	5	6	7	8
9	10	11	12	13	14	15
16	17	18	19	20	21	22
23	24	25	26	27	28	29
30	31					

2023 NOVEMBER 2023						
SUN	MON	TUE	WED	THU	FRI	SAT
			1	2	3	4
5	6	7	8	9	10	11
12	13	14	15	16	17	18
19	20	21	22	23	24	25
26	27	28	29	30		

2023 DECEMBER 2023						
SUN	MON	TUE	WED	THU	FRI	SAT
						1
2	3	4	5	6	7	8
9	10	11	12	13	14	15
16	17	18	19	20	21	22
23	24	25	26	27	28	29
30	31					

T928 - 19 1/2 x 27

Top Imprint

2023 JANUARY 2023						
SUN	MON	TUE	WED	THU	FRI	SAT
1	2	3	4	5	6	7
8	9	10	11	12	13	14
15	16	17	18	19	20	21
22	23	24	25	26	27	28
29	30	31				

2023 FEBRUARY 2023						
SUN	MON	TUE	WED	THU	FRI	SAT
			1	2	3	4
5	6	7	8	9	10	11
12	13	14	15	16	17	18
19	20	21	22	23	24	25
26	27	28				

2023 MARCH 2023						
SUN	MON	TUE	WED	THU	FRI	SAT
					1	2
3	4	5	6	7	8	9
10	11	12	13	14	15	16
17	18	19	20	21	22	23
24	25	26	27	28	29	30
31						

2023 APRIL 2023						
SUN	MON	TUE	WED	THU	FRI	SAT
						1
2	3	4	5	6	7	8
9	10	11	12	13	14	15
16	17	18	19	20	21	22
23	24	25	26	27	28	29

2023 MAY 2023						
SUN	MON	TUE	WED	THU	FRI	SAT
						1
2	3	4	5	6	7	8
9	10	11	12	13	14	15
16	17	18	19	20	21	22
23	24	25	26	27	28	29

2023 JUNE 2023						
SUN	MON	TUE	WED	THU	FRI	SAT
					1	2
3	4	5	6	7	8	9
10	11	12	13	14	15	16
17	18	19	20	21	22	23
24	25	26	27	28	29	30

2023 JULY 2023						
SUN	MON	TUE	WED	THU	FRI	SAT
						1
2	3	4	5	6	7	8
9	10	11	12	13	14	15
16	17	18	19	20	21	22
23	24	25	26	27	28	29

2023 AUGUST 2023						
SUN	MON	TUE	WED	THU	FRI	SAT
			1	2	3	4
5	6	7	8	9	10	11
12	13	14	15	16	17	18
19	20	21	22	23	24	25
26	27	28	29	30	31	

2023 SEPTEMBER 2023						
SUN	MON	TUE	WED	THU	FRI	SAT
						1
2	3	4	5	6	7	8
9	10	11	12	13	14	15
16	17	18	19	20	21	22
23	24	25	26	27	28	29
30	31					

2023 OCTOBER 2023						
SUN	MON	TUE	WED	THU	FRI	SAT
						1
2	3	4	5	6	7	8
9	10	11	12	13	14	15
16	17	18	19	20	21	22
23	24	25	26	27	28	29
30	31					

2023 NOVEMBER 2023						
SUN	MON	TUE	WED	THU	FRI	SAT
			1	2	3	4
5	6	7	8	9	10	11
12	13	14	15	16	17	18
19	20	21	22	23	24	25
26	27	28	29	30		

2023 DECEMBER 2023						
SUN	MON	TUE	WED	THU	FRI	SAT
						1
2	3	4	5	6	7	8
9	10	11	12	13	14	15
16	17	18	19	20	21	22
23	24	25	26	27	28	29
30	31					

RUBBER & GASKET CO.

OF PUERTO RICO, INC.

Engineered Rubber Products

**Metallic & Non-Metallic Hose & Gaskets - Belts - Rod & Sheet Packings
Teflon - Lexan, Plastic Sheets & Rods - Specialty Machine Shop Work**

P.O. BOX 29045
SAN JUAN, PR 00929
TEL. (787) 763-8787
FAX. (787) 763-4777

P.O. BOX 7418
PONCE, PR 00732
TEL. (787) 843-8450
FAX. (787) 843-8082

WWW.RUBBERANDGASKET.COM

2023 JULY 2023						
SUN	MON	TUE	WED	THU	FRI	SAT
						1
2	3	4	5	6	7	8
9	10	11	12	13	14	15
16	17	18	19	20	21	22
23	24	25	26	27	28	29

2023 AUGUST 2023						
SUN	MON	TUE	WED	THU	FRI	SAT
			1	2	3	4
5	6	7	8	9	10	11
12	13	14	15	16	17	18
19	20	21	22	23	24	25
26	27	28	29	30	31	

2023 SEPTEMBER 2023						
SUN	MON	TUE	WED	THU	FRI	SAT
						1
2	3	4	5	6	7	8
9	10	11	12	13	14	15
16	17	18	19	20	21	22
23	24	25	26	27	28	29
30	31					

2023 OCTOBER 2023						
SUN	MON	TUE	WED	THU	FRI	SAT
						1
2	3	4	5	6	7	8
9	10	11	12	13	14	15
16	17	18	19	20	21	22
23	24	25	26	27	28	29
30	31					

2023 NOVEMBER 2023						
SUN	MON	TUE	WED	THU	FRI	SAT
			1	2	3	4
5	6	7	8	9	10	11
12	13	14	15	16	17	18
19	20	21	22	23	24	25
26	27	28	29	30		

2023 DECEMBER 2023						
SUN	MON	TUE	WED	THU	FRI	SAT
						1
2	3	4	5	6	7	8
9	10	11	12	13	14	15
16	17	18	19	20	21	22
23	24	25	26	27	28	29
30	31					

M929 - 19 1/2 x 27

Center Imprint

Item: T928 Top Imprint
Item: M929 Center Imprint
Size: 19 1/2 x 27
Imprint Area: 18 x 9

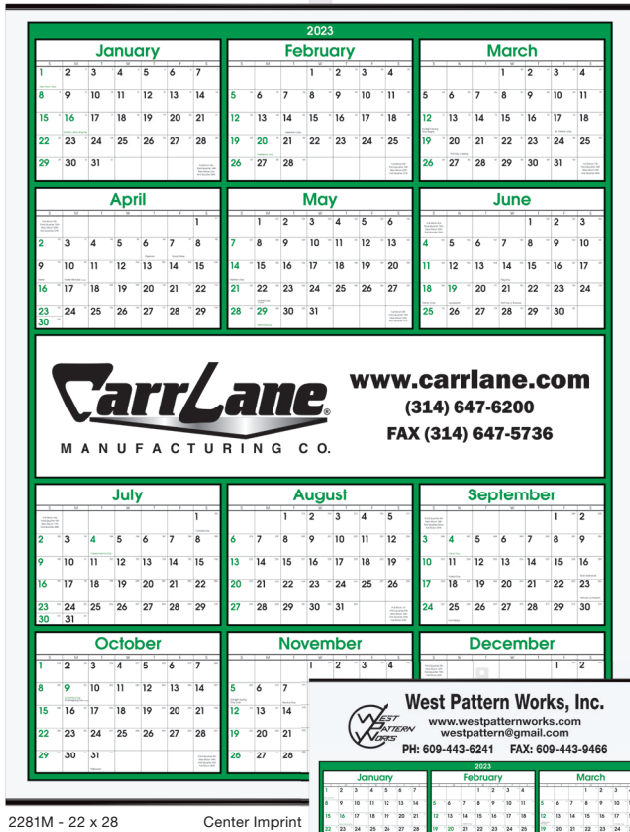
Paper Stock: 100 lb. gloss text.

Standard Features: 12 month year at a glance calendar in 185-Red and Black. Black tin at top (with hanger) and bottom. Imprint in 185-Red and Black.

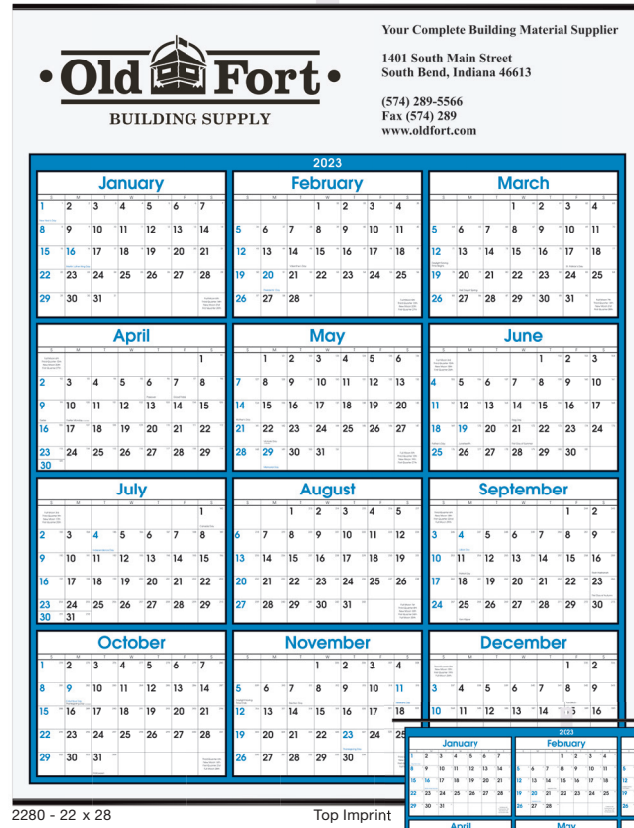
item	size	imprint area	100	250	500	1000
T928	19 1/2 x 27	18 x 9	5.27	3.78	2.99	2.59
M929	19 1/2 x 27	18 x 9	5.27	3.78	2.99	

Year-at-a-Glance Calendars

• Choose top or center imprint



2281M - 22 x 28 Center Imprint



2280 - 22 x 28 Top Imprint



2281 - 22 x 28 Top Imprint



2280M - 22 x 28 Center Imprint

Item: 2280 - Top Imprint
Item: 2280M - Center Imprint
Size: 22 x 28
Imprint Area: 21 x 4 1/2

Paper Stock: 100 lb. matte text.

Standard Features: 12 month year-on-a-page calendar. Features generous memo blocks and clean, bold numbers. Includes consecutive numbers and moon phases. Black tin at top (with hanger) and bottom. Black imprint.

Item: 2281 - Top Imprint
Item: 2281M - Center Imprint
Imprint Area: 21 x 4 1/2

item		100	250	500	1000
2280 / 2280M	Blue	4.49	3.69	3.14	2.81
2281 / 2281M	Green	4.49	3.69	3.14	2.81

(4R)

OILFIELD SPECIALTY DISTRIBUTORS, INC.

1601 S. E. 23rd St. OKLAHOMA CITY, OK 73129 Phone (405) 677-5781
 Oklahoma and National Wats 1-800-654-4704
 285 West Barton County Road GREAT BEND, KS 67530 Phone (620) 792-8223
 Kansas Wats 1-800-362-0913



"SERVING THE INDUSTRY SINCE 1951"

TWO THOUSAND TWENTY THREE

JANUARY							FEBRUARY							MARCH						
SUN	MON	TUE	WED	THU	FRI	SAT	SUN	MON	TUE	WED	THU	FRI	SAT	SUN	MON	TUE	WED	THU	FRI	SAT
1	2	3	4	5	6	7	1	2	3	4	5	6	7	1	2	3	4	5	6	7
8	9	10	11	12	13	14	8	9	10	11	12	13	14	8	9	10	11	12	13	14
15	16	17	18	19	20	21	15	16	17	18	19	20	21	15	16	17	18	19	20	21
22	23	24	25	26	27	28	22	23	24	25	26	27	28	22	23	24	25	26	27	28
29	30	31					29	30						29	30	31				
APRIL							MAY							JUNE						
SUN	MON	TUE	WED	THU	FRI	SAT	SUN	MON	TUE	WED	THU	FRI	SAT	SUN	MON	TUE	WED	THU	FRI	SAT
1	2	3	4	5	6	7	1	2	3	4	5	6	7	1	2	3	4	5	6	7
8	9	10	11	12	13	14	8	9	10	11	12	13	14	8	9	10	11	12	13	14
15	16	17	18	19	20	21	15	16	17	18	19	20	21	15	16	17	18	19	20	21
22	23	24	25	26	27	28	22	23	24	25	26	27	28	22	23	24	25	26	27	28
29	30						29	30						29	30					
JULY							AUGUST							SEPTEMBER						
SUN	MON	TUE	WED	THU	FRI	SAT	SUN	MON	TUE	WED	THU	FRI	SAT	SUN	MON	TUE	WED	THU	FRI	SAT
1	2	3	4	5	6	7	1	2	3	4	5	6	7	1	2	3	4	5	6	7
8	9	10	11	12	13	14	8	9	10	11	12	13	14	8	9	10	11	12	13	14
15	16	17	18	19	20	21	15	16	17	18	19	20	21	15	16	17	18	19	20	21
22	23	24	25	26	27	28	22	23	24	25	26	27	28	22	23	24	25	26	27	28
29	30	31					29	30						29	30					
OCTOBER							NOVEMBER							DECEMBER						
SUN	MON	TUE	WED	THU	FRI	SAT	SUN	MON	TUE	WED	THU	FRI	SAT	SUN	MON	TUE	WED	THU	FRI	SAT
1	2	3	4	5	6	7	1	2	3	4	5	6	7	1	2	3	4	5	6	7
8	9	10	11	12	13	14	8	9	10	11	12	13	14	8	9	10	11	12	13	14
15	16	17	18	19	20	21	15	16	17	18	19	20	21	15	16	17	18	19	20	21
22	23	24	25	26	27	28	22	23	24	25	26	27	28	22	23	24	25	26	27	28
29	30	31					29	30						29	30					

2250 - 22 x 34

• Perfect for scheduling

Item: 2250
 Size: 22 x 34
 Imprint Area: 19 x 3 1/2

Paper Stock: 100 lb. matte text.

Standard Features: 12 month year at a glance
 calendar preprinted in Process Blue, 185 Red and Black
 with consecutive day numbers and moon phases. Black
 tin at top (with hanger) and bottom. Black imprint.

item	imprint area	100	250	500	1000
2250	19 x 3 1/2	6.13	4.63	3.19	2.93

(4R)

ASI 50873 | PPAI 102565 | SAGE 50670

American Made at Time of Order

Products are designed and manufactured in our Arkansas facility to fit your customer's needs.

Reliable Fulfillment

Enjoy better quality control, inventory management and 2-3 day transit time to most U.S. locations.

Be Part of Our Family

Expect personalized attention from a supplier you can trust. We have been serving our customers since 1928.

Proudly

Made in the USA



www.drum-line.com

DRUM-LINE INC.

The Complete Source for Paper Products

