

# DRUM-LINE

The Complete Source for Paper Products

**SIGNED AND DATED  
PHYSICIAN ORDERS**  
orders@phc.faxlogic.com  
Fax: (888) 344-6125

**PINNACLE  
HOME CARE**  
BEYOND EXPECTATION

**REFERRALS**  
Fax: (888) 344-6115  
referrals@pinnaclehomecare.net  
**Authorizations:** (866) 200-6792  
**Record Requests:** (888) 344-6125  
medicalrecords@pinnaclehomecare.net



JANUARY 2024						
SUN	MON	TUE	WED	THU	FRI	SAT
	1	2	3	4	5	6
7	8	9	10	11	12	13
14	15	16	17	18	19	20
21	22	23	24	25	26	27
28	29	30	31			

**January 2024**

SUN	MON	TUE	WED	THU	FRI	SAT
	1	2	3	4	5	6
7	8	9	10	11	12	13
14	15	16	17	18	19	20
21	22	23	24	25	26	27
28	29	30	31			

[pinnaclehomecare.net](http://pinnaclehomecare.net)

**WESTMINSTER  
TITLE COMPANY INC.**  
A Title Services Company

San Ramon Office  
3000 State Street  
Westminster, CA 94597  
© westminster

**Southeastern**  
Directions for Life

December 2023      **January 2024**      February 2024

SUN	MON	TUE	WED	THU	FRI	SAT
	1	2	3	4	5	6
7	8	9	10	11	12	13
14	15	16	17	18	19	20
21	22	23	24	25	26	27
28	29	30	31			



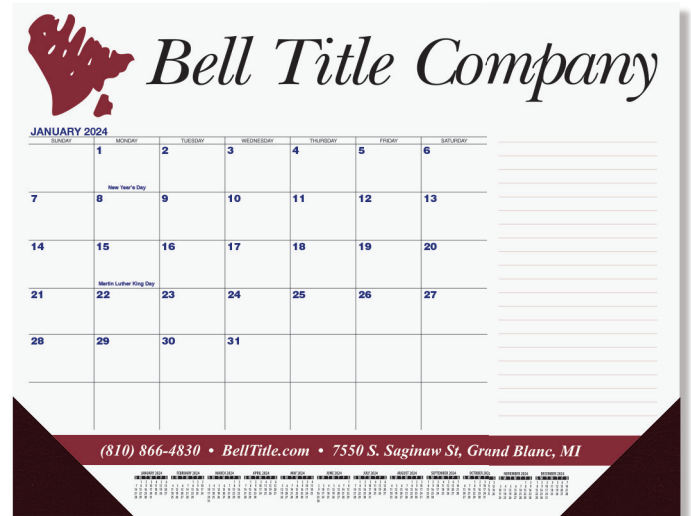


# DESK PADS

Size: 21 3/4 x 17



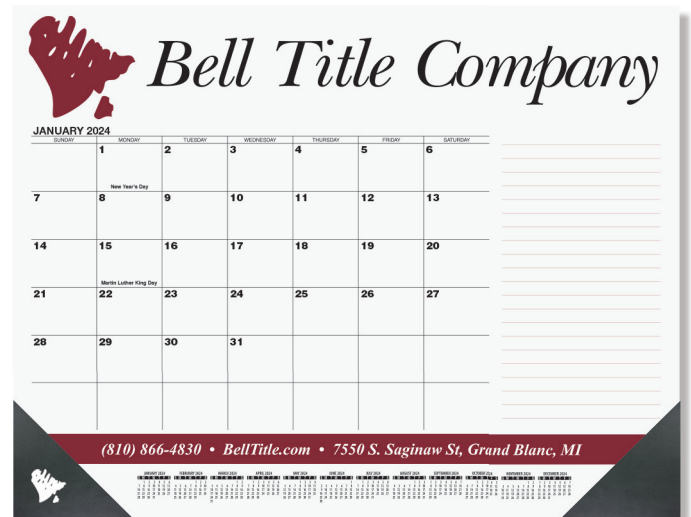
Item DDP1A - Blue and Black calendar



Item DDP2A - Blue and Black calendar



Item DDP1B - Black calendar



Item DDP2B - Black calendar

Optional  
Corner Imprint

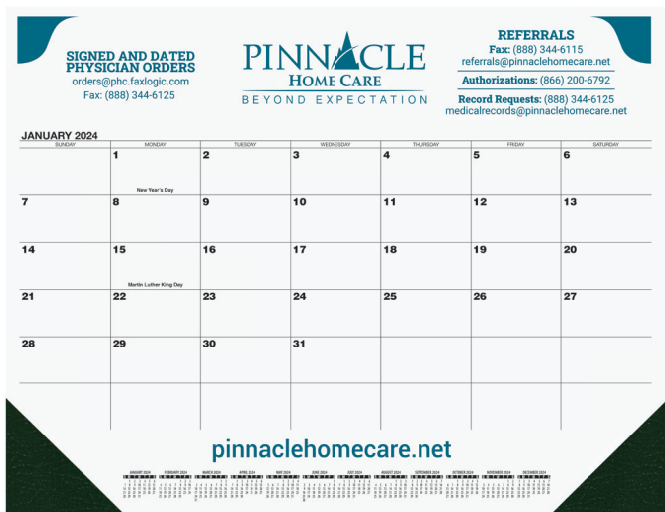


Click to view Pricing and Options

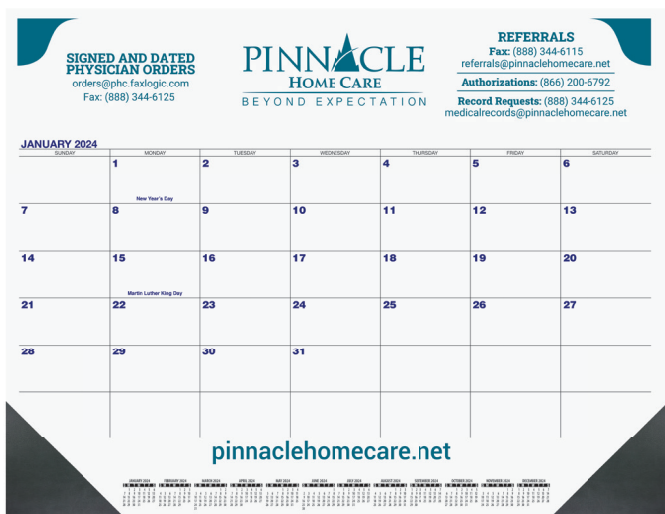
# DESK PADS

Size: 21 3/4 x 17

• FREE hole punch



Item DDP3A - Blue and Black calendar



Item DDP3B - Black calendar

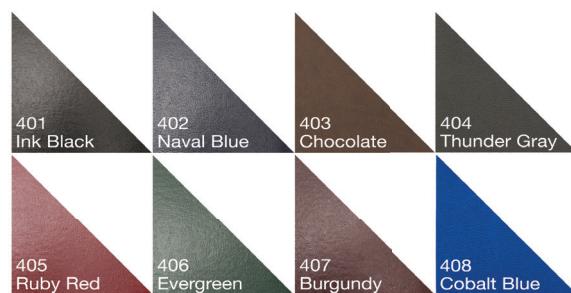
## 3 Step Ordering

(see details page 5)

- 1 Layout
- 2 Ink Color
- 3 Corner Color

- FREE 13th Month
- FREE Phantom Imprint
- MORE Corner Colors
- FREE Hole Punch
- EXCLUSIVE Corner Imprint Option

### Leatherette Corner Colors



Colors shown are a printed representation. Request swatch for exact color.

[Click to view Pricing and Options](#)

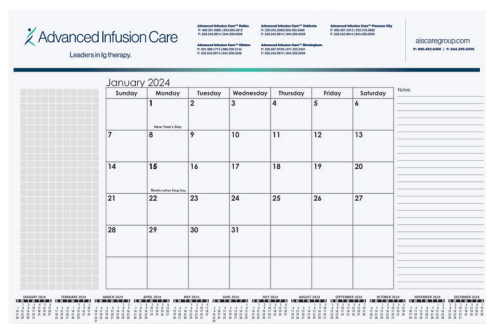
**Small Desk Pads**  
Size: 16 3/4 x 10 7/8

**Paper Stock:** 60 lb. white offset, printed one or two standard colors, one side. Padded at top with 13 sheets to a pad with chipboard back.

**Standard Features:** December – December (13 months) preprinted calendar. Twelve month reference calendar standard at bottom of each layout. Company logo and information printed in imprint areas shown.

**Packaging:** Bulk packed in cartons.

[Click to view Pricing and Options](#)



Item CDP1B

Size: 16 3/4 x 10 7/8

# DESK PADS

with Julian and Contractor Dates

Size: 21 3/4 x 17

**Lancaster Schert Equipment LLC**  
 317.359.3000  
 www.l-equipment.com  
 facebook.com/lancasterschertequipment

**Services Offered:**

- Heavy cooking equipment
- Refrigeration
- Warewashing
- Business and table top
- Storage systems
- Spring equipment
- Equipment inventory
- Design and specification writing
- Project management
- Delivery and installation

**Industries Served:**

- K-12 Public and Private Schools
- Healthcare Facilities
- Higher Education
- Guest Housing
- Entertainment
- Government Entities

**Carriers:** CARLISLE, CRES COR., GARLAND, HENRY HEINZ, PIPER SALVAJOR, Thermo-Kool

Item DDP4B - Black calendar with Julian and Contractor dates.

**COLORADO TITLE & CLOSING SERVICES**  
 Serving Colorado's Western Slope Since 1946!

**Additional Services Available:**

- CLEENCHANGE ACCOMMODATIONS, INC. Call (970) 247-5464 for your 800 Tax Refund Exchange
- ROCKY MOUNTAIN ESCROW, INC. Call (970) 385-4423 for enclosing seller carrybacks and contracts

www.coloradotitleservices.com

Item DDP6D - Blue and Gold calendar with Julian and Contractor dates.

**DAUPHIN Electric**  
 1830 SOUTH 19TH ST. HARRISBURG, PA 17104 (717) 986-9300 • FAX: (717) 986-9340  
 705 VOGELSONG RD. YORK, PA 17404 (717) 848-2400 • FAX: (717) 848-2344  
 Emergency (717) 939-0916 • www.dauphinelectric.com

PHILIPS, F&T, Southwire, P, Leviton

Item CA212 - Patriotic Reflex Blue & 485 Red

**Cascade Title**  
 Clark County | 404 E. 15th St., Suite 12 | Vancouver, WA 98663 | Office (360) 695-1301 | Toll Free (877) 695-1301 | Fax (360) 695-2358 | www.cascadetitle.com  
 Cowlitz County | 1425 Maple St. | Longview, WA 98632 | Office (360) 435-2950 | Toll Free (877) 435-2950 | Fax (360) 435-8010 | www.cascade-title.com

Item DDP5B - Black calendar with Julian and Contractor dates.

**Cascade Title**  
 Clark County | 404 E. 15th St., Suite 12 | Vancouver, WA 98663 | Office (360) 695-1301 | Toll Free (877) 695-1301 | Fax (360) 695-2358 | www.cascadetitle.com  
 Cowlitz County | 1425 Maple St. | Longview, WA 98632 | Office (360) 435-2950 | Toll Free (877) 435-2950 | Fax (360) 435-8010 | www.cascade-title.com

Item DDP5D - Blue and Gold calendar with Julian and Contractor dates.

Click to view Pricing and Options

# DESK PADS

**Size:** 21 3/4 x 17

**Paper Stock:** 60 lb. white offset, printed one or two standard colors, one side. Padded at top with 13 sheets to a pad with chipboard back.

**Corners:** Two corners at bottom of pad. Leather-like material (see colors below). Optional imprinted corner foil stamped in one color. Choose gold, silver, copper, or white imprint. Chocolate, thunder gray, and cobalt blue may be debossed. See prices below.

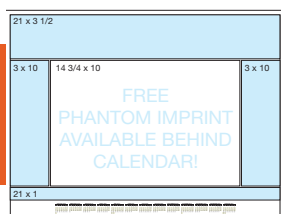
**Standard Features:** December – December (13 months) preprinted calendar. Twelve month reference calendar standard at bottom of each layout. Company logo and information printed in imprint areas shown.

**Packaging:** Bulk packed in cartons.

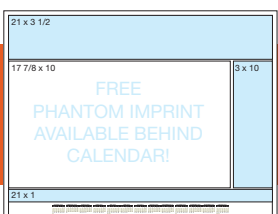
## 3 Step Ordering

### 1 Layout 2 Ink Color 3 Corner Color

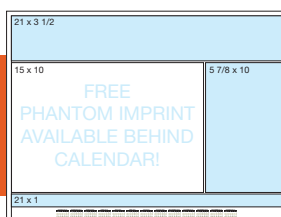
#### Calendar Layouts and Imprint Areas



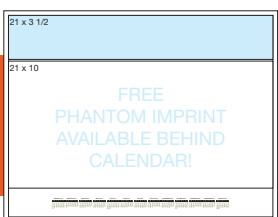
Preprinted Calendar Color:  
Item DDP1A - Blue & Black  
Item DDP1B - Black



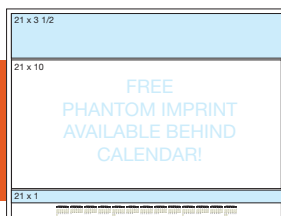
Preprinted Calendar Color:  
Item DDP4B - Black  
Item CA212 - Blue & Red  
with Julian & Contractor dates



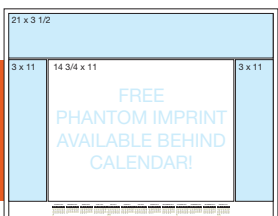
Preprinted Calendar Color:  
Item DDP2A - Blue & Black  
Item DDP2B - Black



Preprinted Calendar Color:  
Item DDP5B - Black  
Item DDP5D - Blue & Gold  
with Julian & Contractor dates



Preprinted Calendar Color:  
Item DDP3A - Blue & Black  
Item DDP3B - Black



Preprinted Calendar Color:  
Item DDP6D - Blue & Gold  
with Julian & Contractor dates

#### Standard Ink Colors



PMS® 185 Red



Reflex Blue



PMS® 348 Green



Pantone Yellow



PMS® 021 Orange



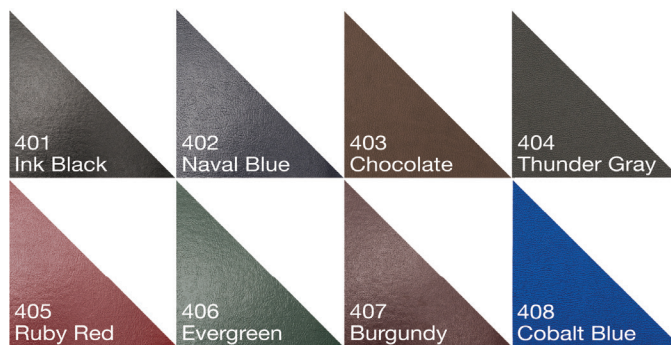
PMS® 202 Burgundy



Black

Colors shown are a full color printed representation.  
Consult Pantone book for exact color.

#### Leatherette Corner Colors



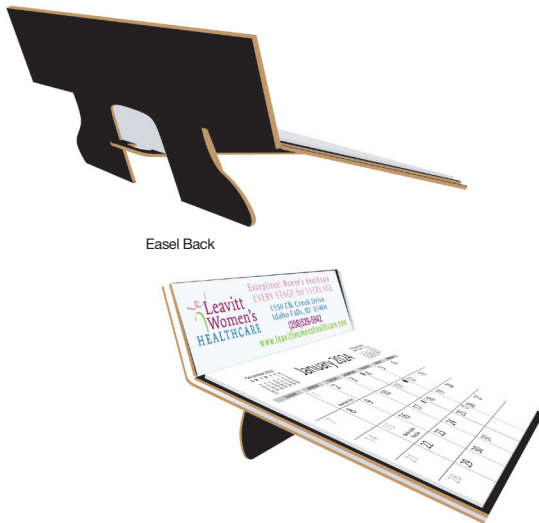
Colors shown are a printed representation. Request swatch for exact color.

[Click to view Pricing and Options](#)

# EASEL BACK

- Smooth Covers
- 300 lapis
- 301 meadow
- 303 red
- 304 tangerine
- 305 black
- 306 white
- 307 natural
- 308 sunshine
- 309 navy
- Linen Covers
- 331 maroon
- 333 cocoa
- 330 denim

Colors shown are a printed representation. Request swatch for exact color.



Easel Back



EDC14 - Full Color

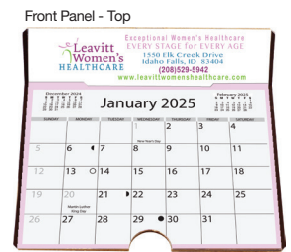


EDC1 - Foil Stamped



Back Panel

• Get double the exposure with a free imprint on the back panel



Front Panel - Top

Front Panel - Bottom (behind calendar pad)

[Click to view Pricing and Options](#)

## Full Color

**Item:** EDC14  
**Size:** 6 1/4 x 6 3/8  
**Calendar Pad Size:** 6 x 4 1/2  
**Imprint Areas:**  
 Top Front Panel: 6 3/16 x 1 1/2  
 Bottom (behind calendar): 6 3/16 x 4 3/4. Submit custom art or choose stock January 2022 calendar.  
 Back Panel: 6 7/16 x 1 1/2

**Board:** 80 lb. coated cover printed full color with gloss coat, mounted to heavy black chipboard.

[Click to view Pricing and Options](#)

## Foil Stamped

**Item:** EDC1  
**Size:** 6 1/4 x 6 3/8  
**Calendar Pad Size:** 6 x 4 1/2  
**Imprint Area:** 5 7/8 x 1 1/8

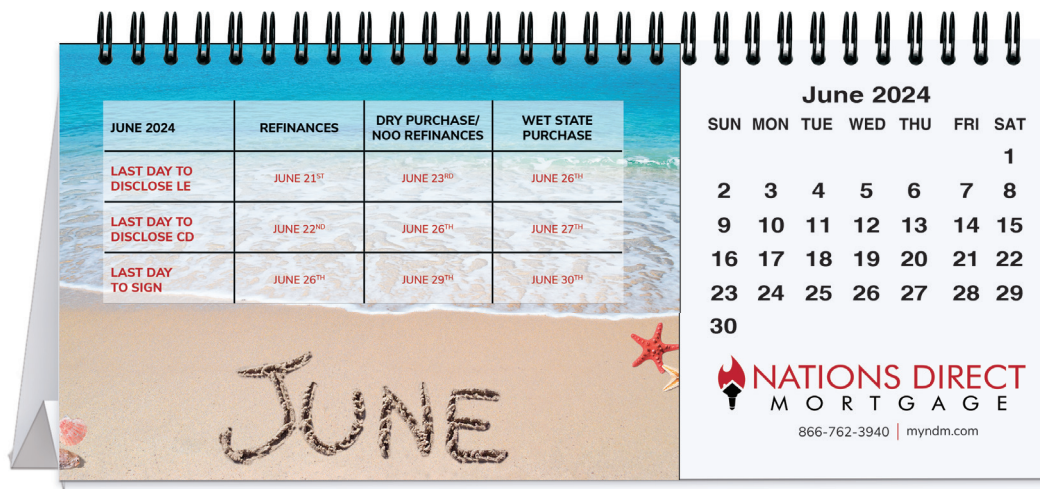
**Board:** Heavyweight paperboard foil stamped in one standard color.

**Standard Foil Colors:** Gloss-Black, White, Ivory, Red, Green, Blue, Navy, Orange, Pink; Metallic-Silver, Gold, Copper, Red, Green, Blue.

**Standard Features:** December - December (13 months) calendar, includes American holidays and moon phases. Die cut easel back for table or desk.

# CUSTOM PHOTO

Desk



TC5 - 8 3/4 x 4

• Start any month

[Click to view Pricing and Options](#)

• 13 Custom Photos!

**Item:** TC4  
**Overall Size:** 5 13/16 x 4 1/2  
**Photo Size:** 3 x 2 15/16  
**Easel Imprint Area:** 5 5/16 x 1 1/16  
**Flat Size for Mailing:** 5 13/16 x 6 1/4

**Item:** TC5  
**Overall Size:** 8 3/4 x 4  
**Photo Size:** 5 5/8 x 3 7/8  
**Imprint Area:** 2 7/8 x 1  
**Flat Size for Mailing:** 8 3/4 x 5 3/4

**Cover Sheet:** Your photo printed full color on 80 lb. gloss cover.  
**Calendar Sheets:** 80 lb. gloss text, 12 calendar sheets, front month at a glance and back month at a glance with room to write. 12 custom photos printed full color. Calendar in black only. Back of the last calendar sheet has a year at a glance calendar for the current year and the next year.

**TC4 Easel Back:** White cover stock with company logo and information printed in one to full color on two sides. Pre-scored back folds into an easel to set on a desk. Easel back contains "Emergency Phone Numbers" and "Future Planning."

**Binding:** Black wire-o.

**Packaging:** Bulk packed in cartons.



TC4 - 5 13/16 x 4 1/2

[Click to view Pricing and Options](#)

# TENT DESK



February 2024

SUN	MON	TUE	WED	THU	FRI	SAT
				1	2	3
4	5	6	7	8	9	10
11	12	13	14	15	16	17
18	19	20	21	22	23	24
25	26	27	28	29		

**WALTHAM**  
PEST SERVICES  
*Pest and Termites Control Since 1893*  
(866) 974-PEST  
www.WalthamServices.com

Agawam, MA  
Hyannis, MA  
Milford, CT  
New London, CT  
Natick, MA (Home Office)

Pawtucket, RI  
Scarborough, ME  
Pembroke, MA  
Wilmington, MA

TC117 - Serene Sunsets

• Same price for one to full color imprint!



April 2024

SUN	MON	TUE	WED	THU	FRI	SAT
	1	2	3	4	5	6
7	8	9	10	11	12	13
14	15	16	17	18	19	20
21	22	23	24	25	26	27
28	29	30				

**NORITZ**  
TANKLESS WATER HEATERS

TC118 - Peaceful Peaks



June 2024

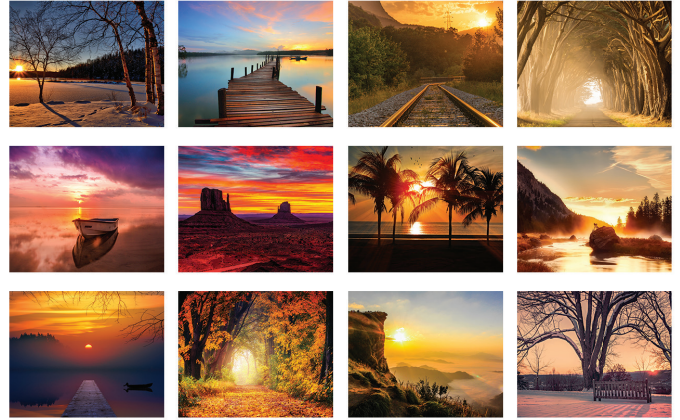
SUN	MON	TUE	WED	THU	FRI	SAT
						1
2	3	4	5	6	7	8
9	10	11	12	13	14	15
16	17	18	19	20	21	22
23	24	25	26	27	28	29
30						

**Southern Oral Surgery**  
Oral, Facial & Dental Implant Surgery

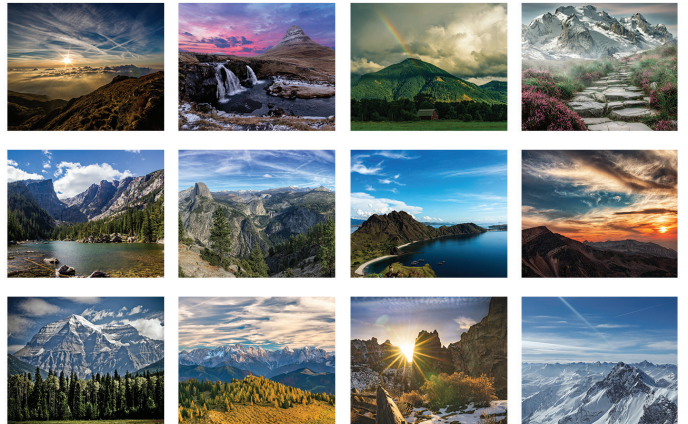
www.southern-oral-surgery.com  
**Dr. Eric Ferrara**  
770-471-4196  
Implants & Oral/Facial Surgery

TC115 - American Coasts

TC117 - Serene Sunsets



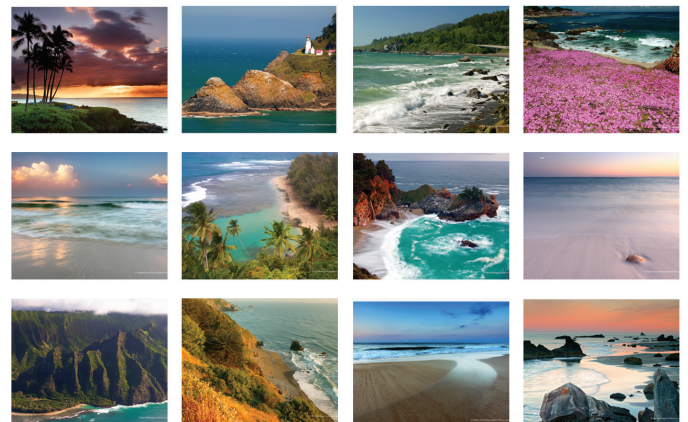
TC118 - Peaceful Peaks



TC110 - Majestic Outdoors / TC111 - Bible Verses

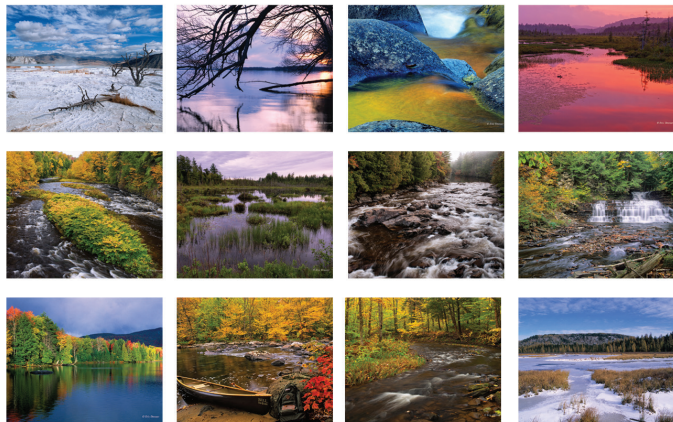


TC115 - American Coasts





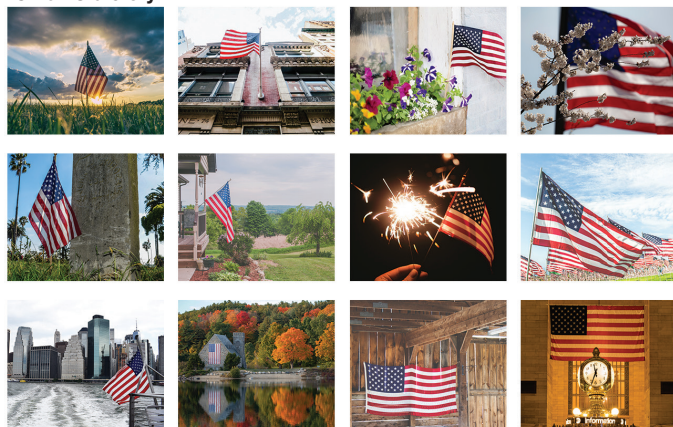
TC113 - Scenic Water



TC2 - Waterways



TC119 - Old Glory



TC120 - Agriculture



# TENT DESK

• Same price for one to full color imprint!



TC120 - Agriculture

**Overall Size:** 5 <sup>13</sup>/<sub>16</sub> X 4 <sup>1</sup>/<sub>2</sub>     **Imprint Area:** 5 <sup>5</sup>/<sub>16</sub> X 1 <sup>1</sup>/<sub>16</sub>  
**Flat Size for Mailing:** 5 <sup>13</sup>/<sub>16</sub> X 6 <sup>1</sup>/<sub>4</sub>

**Calendar Sheets:** 80 lb. gloss text, 12 calendar sheets, front month at a glance and back month at a glance with room to write. Calendar in black only. Back of the last calendar sheet has a year at a glance calendar for the current year and the next year.


**Easel Back:** White cover stock with company logo and information printed in one to full color on two sides. Pre-scored back folds into an easel to set on a desk. Easel back contains "Emergency Phone Numbers" and "Future Planning."

**Binding:** Black Wire-O.

**Packaging:** Bulk packed in cartons.

**Click to view Pricing and Options**

# TENT DESK



**June 2024**

SUN	MON	TUE	WED	THU	FRI	SAT
						1
2	3	4	5	6	7	8
9	10	11	12	13	14	15
16	17	18	19	20	21	22
23	24	25	26	27	28	29
30						

4713 White Oak Rd.  
Paradise, PA 17562

Lakeview

METALS LLC

Mahlon L. Esh  
717-278-2580

5" & 6" Seamless K Gutters • General Carpentry

TC1 - Wildlife

• Same price for one to full color imprint!



**September 2024**

SUN	MON	TUE	WED	THU	FRI	SAT
1	2	3	4	5	6	7
8	9	10	11	12	13	14
15	16	17	18	19	20	21
22	23	24	25	26	27	28
29	30					



WEST BEND

A MUTUAL INSURANCE COMPANY®

TC3 - Fauna



**April 2024**

SUN	MON	TUE	WED	THU	FRI	SAT
	1	2	3	4	5	6
7	8	9	10	11	12	13
14	15	16	17	18	19	20
21	22	23	24	25	26	27
28	29	30				



ROCHESTER ENDODONTICS

KYLE J. SAISSSELIN, DDS • DAVID M. DOW, DDS, MS  
*Board Certified Endodontists*

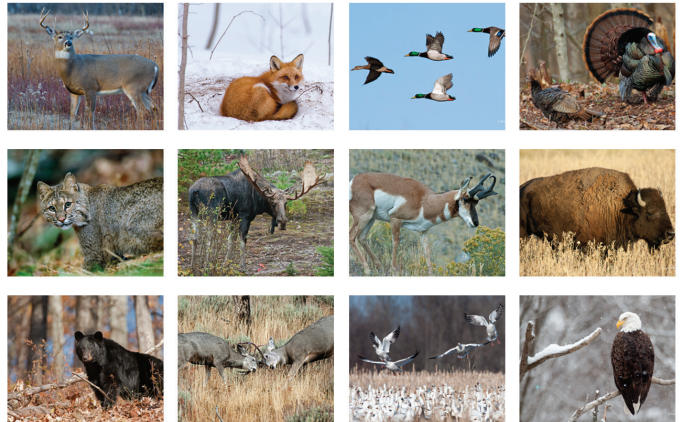
6800 Pittsford-Palmyra Rd. • Suite 110 • Fairport, NY 14450  
(585) 223-5330 • (800) 383-2172 • www.rochendon.com • rochend@frontiernet.net

TC114 - Bird Watching

TC1 - Wildlife



TC112 - American Wildlife



TC3 - Fauna



TC114 - Bird Watching





# CUSTOM PHOTO


Wall



\* Coil bound or stapled same price!

**January 2024**

SUN	MON	TUE	WED	THU	FRI	SAT
	1 New Year's Day 12001	2 2564	3 Third Quarter Moon 2011	4 4732	5 5181	6 5582
7 7293	8 8298	9 9297	10 10296	11 New Moon 21001	12 22004	13 23003
14 14302	15 Moon Lather King Day 15201	16 16300	17 First Quarter Moon 17001	18 18348	19 19207	20 20346
21 21345	22 22304	23 23303	24 24302	25 Full Moon 25001	26 26240	27 27339
28 28338	29 29337	30 30336	31 31335	December 2023 S M T W T F S S 31 30 29 28 27 26 25 24 23 22 21 20 19 18 17 16 15 14 13 12 11 10 9 8 7 6 5 4 3 2 1		January 2024 S M T W T F S S 1 2 3 4 5 6 7 8 9 10 11 12 13 14 15 16 17 18 19 20 21 22 23 24 25 26 27 28 29 30 31



**WESTMINSTER**  
TITLE COMPANY INC.  
A Truist Brothers Company

San Ramon Office  
925.225.4200

Orange County Office  
714.347.1387

westminstertitleagency.com

MW10S - 10 5/8 x 18 1/4

**Item:** MW10/MW10S  
**Size:** Open 10 5/8 x 18 1/4  
 Closed 10 5/8 x 10 1/4  
**Photo Size:** 10 5/8 x 8 1/8  
**Ad Imprint Area:** 10 x 1 1/2

**Paper Stock:** 12 sheets, 80 lb. gloss text. Front and back cover, 80 lb. gloss cover. Photographs printed full color with calendar printed two colors (exact PMS matches not available). Submit 13 custom photos (one per month plus the front cover). Company logo/tagline full color imprint on bottom of back sheet.

**Standard Features:** MW10: Coil bound with white wire. MW10S: Stapled. Hole at top for hanging. January-December (12 months) calendar includes American holidays, moon phases, and Julian dates. Last sheet features two years at a glance.

**Packaging:** Bulk packed in cartons.



**REMEMBER THE BRAVE.  
MEMORIAL DAY.**

SSI Services

**May 2024**

SUN	MON	TUE	WED	THU	FRI	SAT
			1 Third Quarter Moon 12004	2 12403	3 12802	4 13201
5 13600	6 14000	7 New Moon 14401	8 14800	9 15200	10 15600	11 16000
12 16400	13 Mother's Day 16800	14 17200	15 First Quarter Moon 17600	16 18000	17 18400	18 18800
19 19200	20 Weekend Day (Observed) 19600	21 20000	22 20400	23 Full Moon 20800	24 21200	25 21600
26 22000	27 Memorial Day 22400	28 22800	29 23200	30 Third Quarter Moon 23600	31 24000	



800.263.2206

needhelp@SSIServices.com

SSISERVICES.COM

MW10 - 10 5/8 x 18 1/4

- 13 custom photos
- Only 100 minimum order
- Start any month
- Customized date blocks available

[Click to view Pricing and Options](#)

# CUSTOM PHOTO

Wall

• Single Custom Photo



MW10B - 10 5/8 x 16

Your cover image



MW10B - 10 5/8 x 16

Single Custom Photo

**Single Photo**

**Item:** MW10B

**Size:** Open 10 5/8 x 16

Closed 10 5/8 x 8 1/8

**Photo Size:** 10 5/8 x 8 1/8

**Paper Stock:** 12 sheets, 80 lb. gloss text, black only calendar. Front cover, 80 lb. gloss cover printed full color, one side. Submit one custom photo with logo and copy.

**Standard Features:** Coil bound with white wire. Hole at top for hanging. January-December (12 months) calendar includes American and major Canadian holidays, moon phases, and Julian dates.

**Packaging:** Bulk packed in cartons.

**Click to view Pricing and Options**

# MONTHLY WALL



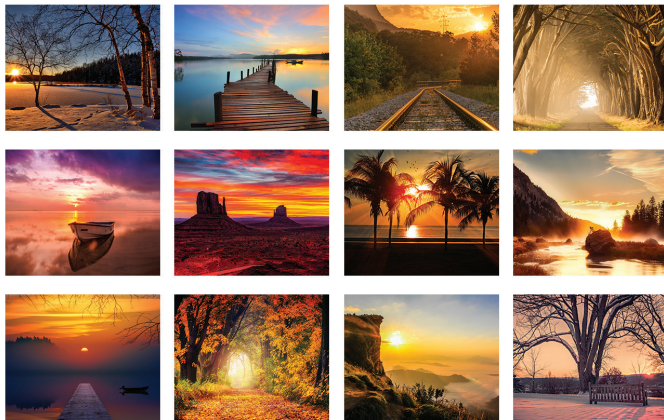
MW117S - 10 5/8 x 18 1/4

Serene Sunsets

• Coil bound or stapled - same price!

**Serene Sunsets**

MW117 - Coil Bound / MW117S - Stapled



**Size:** Open 10 5/8 x 18 1/4    Closed 10 5/8 x 10 1/4  
**Imprint Area:** 10 x 1 1/2

**Paper Stock:** 12 sheets, 80 lb. gloss text. Front and back covers, 80 lb. gloss cover. Photographs printed full color with calendar printed in black and red. Company logo/tagline full color imprint on bottom of back sheet. Exact PMS matches not available.

**Standard Features:** Coil bound with white wire or stapled, please specify. Hole at top for hanging. January-December (12 months) calendar includes American holidays, moon phases, and Julian dates. Last sheet features two years at a glance.

**Packaging:** Bulk packed in cartons.



MW115 - 10 5/8 x 18 1/4

Peaceful Peaks

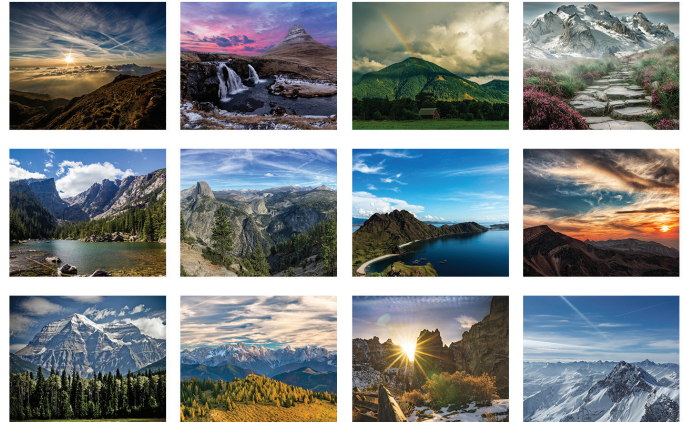


MW111S - 10 5/8 x 18 1/4

Bible Verses

**Peaceful Peaks**

MW118 - Coil Bound / MW118S - Stapled



**Majestic Outdoors**

MW110 - Coil Bound  
MW110S - Stapled



**Bible Verses**

MW111 - Coil Bound  
MW111S - Stapled

# MONTHLY WALL



*If you want to **succeed** you should strike out on new paths, rather than **travel** the worn paths of accepted success.*  
John D. Rockefeller

**April 2024**

SUN	MON	TUE	WED	THU	FRI	SAT
	1 Easter Monday (Czechia) First Quarter Moon 08:27 V	2 09:27	3 09:27	4 09:27	5 09:27	6 09:26
7 09:26	8 New Moon 09:27	9 09:26	10 09:26	11 09:26	12 09:25	13 09:25
14 09:25	15 First Quarter Moon 09:26	16 10:26	17 10:26	18 10:26	19 10:25	20 10:25
21 10:25	22 10:25	23 Full Moon 10:26	24 11:26	25 11:26	26 11:26	27 11:26
28 11:26	29 09:26	30 10:26				

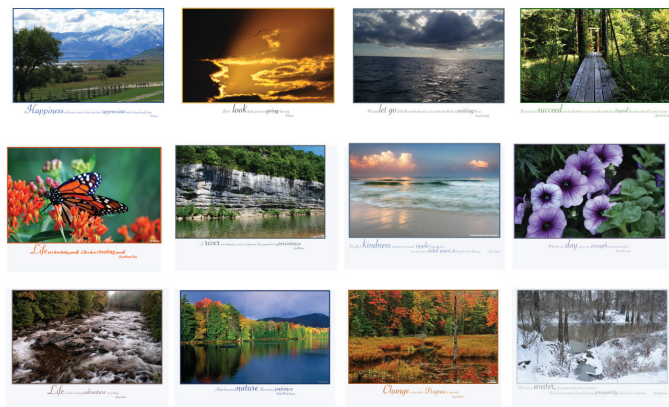
**Thank you for all that you do!**

MW116S - 10 5/8 x 18 1/4

Motivations

**Motivations**

MW116 - Coil Bound / MW116S - Stapled




**AGRICULTURE 2024**

**MATHIS**  
Since 1958

1041 West 2nd Street PO Box 545  
Winner, SD 57580

(605) 842 - 3110  
(605) 842 - 1484

mathismp@gwtc.net  
mathisparis@gwtc.net

MW120 - 10 5/8 x 18 1/4

Agriculture

Free Full Color Imprint

**Agriculture**

MW120 - Coil Bound / MW120S - Stapled



Click to view Pricing and Options

# MONTHLY WALL

*American Coasts 2024*

© Ron Niebrugge/oldmantravels.com

**THURSTON COUNTY TITLE** 105 8th Avenue SE | Olympia, WA 98501 | 360-943-7300 | www.tctitle.net **OLY KAZ**

MW115S - 10 5/8 x 18 1/4 American Coasts

**September 2024**

SUN	MON	TUE	WED	THU	FRI	SAT
1	2	3	4	5	6	7
8	9	10	11	12	13	14
15	16	17	18	19	20	21
22	23	24	25	26	27	28
29	30					

**FARMERS UNION**  
Oil and Lumber Yard  
(701) 263-4227

MW113 - 10 5/8 x 18 1/4 Scenic Water

**March 2024**

SUN	MON	TUE	WED	THU	FRI	SAT
				1	2	
3	4	5	6	7	8	9
10	11	12	13	14	15	16
17	18	19	20	21	22	23
24	25	26	27	28	29	30
31						

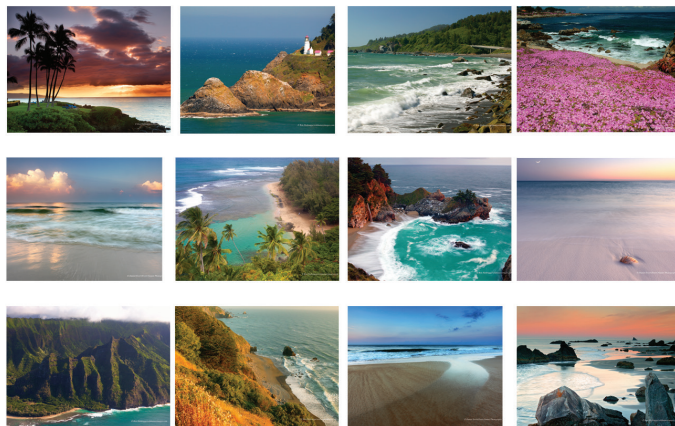
**Miller's**  
Research & Home  
24 Maple Drive, Parsippany, NJ 07702 • R. Miller: 814.427.2333

MW108S- 10 5/8 x 18 1/4 Waterways

• Coil bound or stapled - same price!

**American Coasts**

MW115 - Coil Bound / MW115S - Stapled



**Size:** Open 10 5/8 x 18 1/4 Closed 10 5/8 x 10 1/4  
**Imprint Area:** 10 x 1 1/2

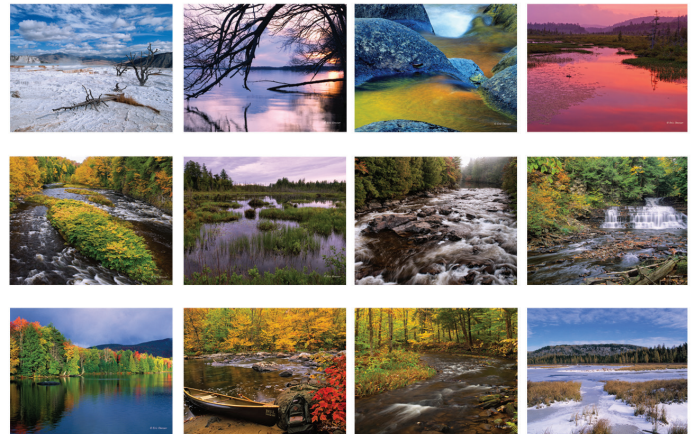
**Paper Stock:** 12 sheets, 80 lb. gloss text. Front and back covers, 80 lb. gloss cover. Photographs printed full color with calendar printed in black and red. Company logo/tagline full color imprint on bottom of back sheet. Exact PMS matches not available.

**Standard Features:** Coil bound with white wire or stapled, please specify. Hole at top for hanging. January-December (12 months) calendar includes American holidays, moon phases, and Julian dates. Last sheet features two years at a glance.

**Packaging:** Bulk packed in cartons.

**Scenic Water**

MW113 - Coil Bound / MW113S - Stapled



**Waterways**

MW108 - Coil Bound / MW108S - Stapled





# MONTHLY WALL



## July 2024

SUN	MON	TUE	WED	THU	FRI	SAT
	1 <small>Cookout Day</small> 182783	2 184182	3 185181	4 <small>Independence Day</small> 186180	5 <small>John Adams</small> 187179	6 188178
7 189177	8 190176	9 191175	10 192174	11 193173	12 194172	13 <small>First Quarter Moon</small> 195171
14 196170	15 197169	16 198168	17 199167	18 200166	19 201165	20 202164
21 <small>Full Moon</small> 203163	22 204162	23 205161	24 206160	25 207159	26 208158	27 <small>Minor Quarter Moon</small> 209157
28 210156	29 211155	30 212154	31 213153			

**First State Bank**  
Your First Choice in Banking.  
Member FDIC

*Four Convenient Locations To Serve You:*

**Wheatland**  
1405 16th Street  
Wheatland, WY 82201  
(307) 322-5222

**Torrington**  
1410 East Valley Hwy 26  
Torrington, WY 82240  
(307) 532-6600

**Casper**  
250 West Whalen  
Casper, WY 82214  
(307) 836-2152

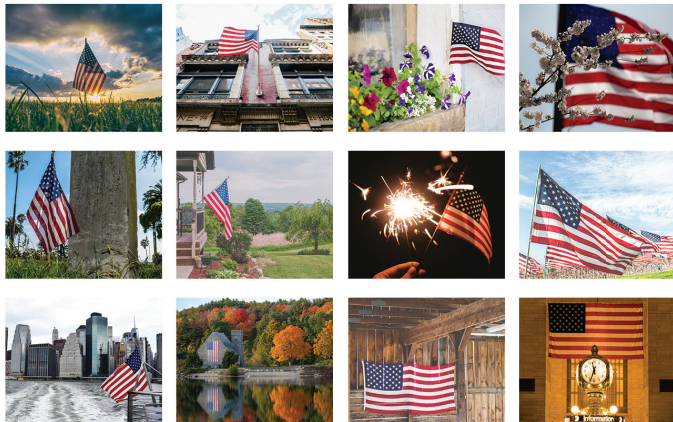
**Casper**  
330 South Center Street Suite 100  
Casper, WY 82601  
(307) 234-9005

Visit our Website: [www.fsbwy.com](http://www.fsbwy.com)

MW119S - 10 5/8 x 18 1/4

Old Glory

Old Glory  
MW119 - Coil Bound / MW119S - Stapled



**2024 Magnificent TRAINS**

**Dry Run Lumber Company**  
"Hardwood Flooring & Log Home Materials"  
18485 Dry Run Road West • Spring Run, PA 17262

MW123 - 10 5/8 x 18 1/4

Magnificent Trains

• Coil bound or stapled - same price!

Magnificent Trains  
MW123 - Coil Bound / MW123S - Staped



Click to view Pricing and Options

# MONTHLY WALL

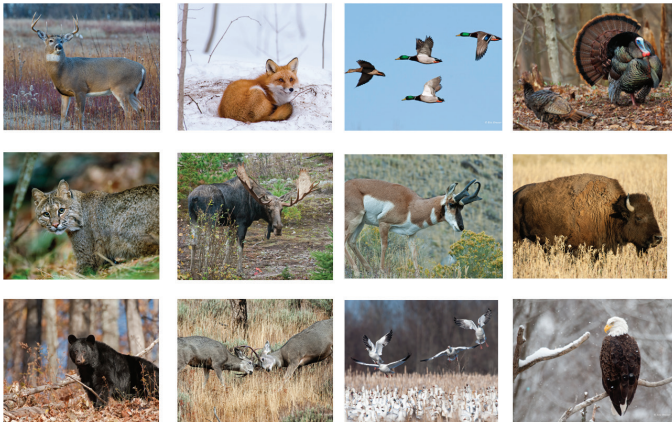


MW112S - 10 5/8 x 18 1/4

American Wildlife

• Free Full Color Imprint

**American Wildlife**  
MW112 - Coil Bound / MW112S - Stapled



**Size:** Open 10 5/8 x 18 1/4      Closed 10 5/8 x 10 1/4  
**Imprint Area:** 10 x 1 1/2

**Paper Stock:** 12 sheets, 80 lb. gloss text. Front and back covers, 80 lb. gloss cover. Photographs printed full color with calendar printed in black and red. Company logo/tagline full color imprint on bottom of back sheet. Exact PMS matches not available.

**Standard Features:** Coil bound with white wire or stapled, please specify. Hole at top for hanging. January-December (12 months) calendar includes American holidays, moon phases, and Julian dates. Last sheet features two years at a glance.

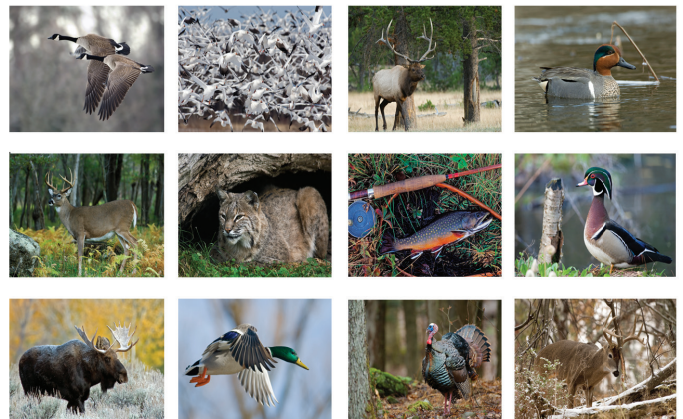
**Packaging:** Bulk packed in cartons.



MW107 - 10 5/8 x 18 1/4

Wildlife

**Wildlife**  
MW107 - Coil Bound / MW107S - Stapled



# MONTHLY WALL



**September 2024**

SUN	MON	TUE	WED	THU	FRI	SAT
1	2 <small>Labour Day New Moon</small>	3	4	5	6	7
8	9	10	11 <small>Full Moon First Quarter Moon</small>	12	13	14
15	16	17	18	19	20	21
22	23	24	25	26	27	28
29 <small>First Day of Autumn</small>	30					

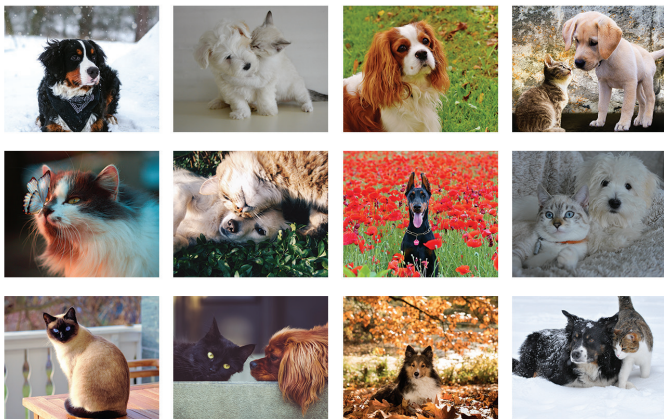

 1133 Van Voorhis Road  
Morgantown, WV 26505
 304-599-9600  
www.aesfcu.com

MW121S - 10 5/8 x 18 1/4

Furever Friends

• Coil bound or stapled - same price!

**Furever Friends**  
MW121 - Coil Bound / MW121S - Stapled



**ACTIVE LIFESTYLE 2024**



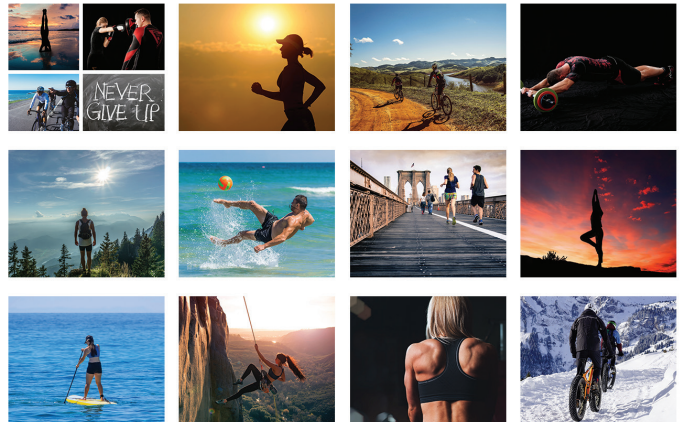


**GOT YOU COVERED**  
**JOSEPH IANNIBELLI**  
**KELLER WILLIAMS NY REALTY**  
**914-954-5510**

MW122 - 10 5/8 x 18 1/4

Active Lifestyle

**Active Lifestyle**  
MW122 - Coil Bound / MW122S - Stapled



[Click to view Pricing and Options](#)

# MONTHLY WALL

U.S. Male

*Jacob*

JANUARY 2024						
SUNDAY	MONDAY	TUESDAY	WEDNESDAY	THURSDAY	FRIDAY	SATURDAY
	1 <small>New Year's Day</small>	2	3	4	5	6
7	8	9	10	11	12	13
14	15 <small>Martin Luther King Day</small>	16	17	18	19	20
21	22	23	24	25	26	27
28	29	30	31			

**MIDWEST**  
EQUIPMENT & SUPPLY CO., INC.

Parts Ordering 1-800-234-5693 • Fax 1-800-774-6294

*Jacob*

JANUARY 2024						
SUNDAY	MONDAY	TUESDAY	WEDNESDAY	THURSDAY	FRIDAY	SATURDAY
	1	2	3	4	5	6
7	8	9	10	11	12	13
14	15	16	17	18	19	20
21	22	23	24	25	26	27
28	29	30	31			

*Ian*

FEBRUARY 2024						
SUNDAY	MONDAY	TUESDAY	WEDNESDAY	THURSDAY	FRIDAY	SATURDAY
	4	5	6	7	8	9
10	11	12	13	14	15	16
17	18	19	20	21	22	23
24	25	26	27	28	29	30

*Jesse*

MARCH 2024						
SUNDAY	MONDAY	TUESDAY	WEDNESDAY	THURSDAY	FRIDAY	SATURDAY
	3	4	5	6	7	8
9	10	11	12	13	14	15
16	17	18	19	20	21	22
23	24	25	26	27	28	29

*Jordan*

APRIL 2024						
SUNDAY	MONDAY	TUESDAY	WEDNESDAY	THURSDAY	FRIDAY	SATURDAY
	1	2	3	4	5	6
7	8	9	10	11	12	13
14	15	16	17	18	19	20
21	22	23	24	25	26	27
28	29	30	31			

*Evan*

MAY 2024						
SUNDAY	MONDAY	TUESDAY	WEDNESDAY	THURSDAY	FRIDAY	SATURDAY
	5	6	7	8	9	10
11	12	13	14	15	16	17
18	19	20	21	22	23	24
25	26	27	28	29	30	31

*Cameron*

JUNE 2024						
SUNDAY	MONDAY	TUESDAY	WEDNESDAY	THURSDAY	FRIDAY	SATURDAY
	2	3	4	5	6	7
8	9	10	11	12	13	14
15	16	17	18	19	20	21
22	23	24	25	26	27	28

*Aaron*

JULY 2024						
SUNDAY	MONDAY	TUESDAY	WEDNESDAY	THURSDAY	FRIDAY	SATURDAY
	1	2	3	4	5	6
7	8	9	10	11	12	13
14	15	16	17	18	19	20
21	22	23	24	25	26	27
28	29	30	31			

*Jaylen*

AUGUST 2024						
SUNDAY	MONDAY	TUESDAY	WEDNESDAY	THURSDAY	FRIDAY	SATURDAY
	4	5	6	7	8	9
10	11	12	13	14	15	16
17	18	19	20	21	22	23
24	25	26	27	28	29	30

*Brandon*

SEPTEMBER 2024						
SUNDAY	MONDAY	TUESDAY	WEDNESDAY	THURSDAY	FRIDAY	SATURDAY
	1	2	3	4	5	6
7	8	9	10	11	12	13
14	15	16	17	18	19	20
21	22	23	24	25	26	27
28	29	30				

*Christian*

OCTOBER 2024						
SUNDAY	MONDAY	TUESDAY	WEDNESDAY	THURSDAY	FRIDAY	SATURDAY
	6	7	8	9	10	11
12	13	14	15	16	17	18
19	20	21	22	23	24	25
26	27	28	29	30	31	

*John*

NOVEMBER 2024						
SUNDAY	MONDAY	TUESDAY	WEDNESDAY	THURSDAY	FRIDAY	SATURDAY
	3	4	5	6	7	8
9	10	11	12	13	14	15
16	17	18	19	20	21	22
23	24	25	26	27	28	29

*Chase*

DECEMBER 2024						
SUNDAY	MONDAY	TUESDAY	WEDNESDAY	THURSDAY	FRIDAY	SATURDAY
	1	2	3	4	5	6
7	8	9	10	11	12	13
14	15	16	17	18	19	20
21	22	23	24	25	26	27
28	29	30	31			

148

**Size:** 8 x 14

**Imprint Area:** 6 3/4 x 1 1/2

**Paper Stock:** 12 sheets, 80 lb. gloss text. 12 photographs printed full color with company logo/tagline printed in black on bottom of extended back sheet.

**Standard Features:** January-December (12 months) calendar printed in black. Coil bound with silver wire. Hole at top for hanging.

**Packaging:** Bulk packed in cartons.

[Click to view Pricing and Options](#)

# MONTHLY WALL

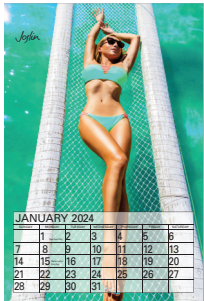
Centerfold

*Joslin*

SUNDAY	MONDAY	TUESDAY	WEDNESDAY	THURSDAY	FRIDAY	SATURDAY
	1 <small>New Year's Day</small>	2	3	4	5	6
7	8	9	10	11	12	13
14	15 <small>Martin Luther King Day</small>	16	17	18	19	20
21	22	23	24	25	26	27
28	29	30	31			

**DIABLO GLASS COMPANY, INC.**  
 STOREFRONTS · FRAMELESS SHOWER DOORS  
 HOME GLASS · MIRRORS · MIRRORING WARDROBE DOORS  
 1940 CONCORD AVE. - CONCORD, CA 94520  
 WEB: DiabloGlassInc.com E-MAIL: sales@DiabloGlassInc.com  
 PH: (925) 682-8271 FAX (925) 682-8278

362436



**Size:** 8 x 14  
**Imprint Area:** 6 3/4 x 1 1/2  
**Paper Stock:** 12 sheets, 80 lb. gloss text. 12 photographs printed full color with company logo/tagline printed in black on bottom of extended back sheet.  
**Standard Features:** January-December (12 months) calendar printed in black. Coil bound with silver wire. Hole at top for hanging.  
**Packaging:** Bulk packed in cartons.

[Click to view Pricing and Options](#)

# ALMANAC

- Quality Building Products -

*Littrell Lumber Mill, Inc.*

Old Moulton Road, SW — DECATUR, ALABAMA 35302  
 PHONE: (256) 355-1468

**Flower** — Carnation  
**Birthingstone** — Garnet

**JANUARY 2024** Do Not Tear Off, ANOTHER MONTH ON BACK.

SUNDAY	MONDAY	TUESDAY	WEDNESDAY	THURSDAY	FRIDAY	SATURDAY
<b>1</b> Fishing Rise: 5, 10, 27, 28 Set: 4, 5, 7, 8, 11, 12, 14, 17, 20, 21, 23 Good: 13, 17, 18, 26, 27, 28, 29	<b>2</b> Fishing Rise: 7, 14, 21, 28 Set: 1, 8, 15, 22, 29 Good: 13, 17, 18, 26, 27, 28, 29	<b>3</b> Fishing Rise: 9, 16, 23, 30 Set: 3, 10, 17, 24 Good: 13, 17, 18, 26, 27, 28, 29	<b>4</b> Fishing Rise: 11, 18, 25, 31 Set: 5, 12, 19, 26 Good: 13, 17, 18, 26, 27, 28, 29	<b>5</b> Fishing Rise: 13, 20, 27, 31 Set: 7, 14, 21, 28 Good: 13, 17, 18, 26, 27, 28, 29	<b>6</b> Fishing Rise: 15, 22, 29 Set: 9, 16, 23, 30 Good: 13, 17, 18, 26, 27, 28, 29	<b>7</b> Fishing Rise: 17, 24, 31 Set: 11, 18, 25, 31 Good: 13, 17, 18, 26, 27, 28, 29

303 - 11 x 16 3/4

**Pfeifer Hardware**  
 124 E. Wyandot Avenue  
 Upper Sandusky, OH  
 Phone: 419-294-2271  
 Hours: Mon - Fri. 7:30 - 5:30 Sat. 7:30 - 2:00  
 Shop Online: www.myhardware.doitbest.com

**The Best** All Across America™  
**The Best** Quality Paints

**JANUARY 2024** Moon's Phases in Eastern Time.  
 FLOWER - Sunstop - GEM - Garnet WATERMAN - Sign of the Month - Lops  
 Sign: Waterman Table Jan. 20 - Feb. 18; Table 18-27 Jan.

SUN	MON	TUE	WED	THU	FRI	SAT
<b>1</b> Fishing Rise: 5, 10, 27, 28 Set: 4, 5, 7, 8, 11, 12, 14, 17, 20, 21, 23 Good: 13, 17, 18, 26, 27, 28, 29	<b>2</b> Fishing Rise: 7, 14, 21, 28 Set: 1, 8, 15, 22, 29 Good: 13, 17, 18, 26, 27, 28, 29	<b>3</b> Fishing Rise: 9, 16, 23, 30 Set: 3, 10, 17, 24 Good: 13, 17, 18, 26, 27, 28, 29	<b>4</b> Fishing Rise: 11, 18, 25, 31 Set: 5, 12, 19, 26 Good: 13, 17, 18, 26, 27, 28, 29	<b>5</b> Fishing Rise: 13, 20, 27, 31 Set: 7, 14, 21, 28 Good: 13, 17, 18, 26, 27, 28, 29	<b>6</b> Fishing Rise: 15, 22, 29 Set: 9, 16, 23, 30 Good: 13, 17, 18, 26, 27, 28, 29	<b>7</b> Fishing Rise: 17, 24, 31 Set: 11, 18, 25, 31 Good: 13, 17, 18, 26, 27, 28, 29

MW23 - 12 1/4 x 18 5/8

**SUMMERFIELD FEED MILL, INC.**  
 PHONE: 643-4776  
 Summerfield, NC 27358  
 Hardware - Fertilizers - Chemicals - Feeds & Seeds  
 Pine Needles - Mulch - Straw

**JANUARY 2024**

SUNDAY	MONDAY	TUESDAY	WEDNESDAY	THURSDAY	FRIDAY	SATURDAY
<b>1</b> Fishing Rise: 5, 10, 27, 28 Set: 4, 5, 7, 8, 11, 12, 14, 17, 20, 21, 23 Good: 13, 17, 18, 26, 27, 28, 29	<b>2</b> Fishing Rise: 7, 14, 21, 28 Set: 1, 8, 15, 22, 29 Good: 13, 17, 18, 26, 27, 28, 29	<b>3</b> Fishing Rise: 9, 16, 23, 30 Set: 3, 10, 17, 24 Good: 13, 17, 18, 26, 27, 28, 29	<b>4</b> Fishing Rise: 11, 18, 25, 31 Set: 5, 12, 19, 26 Good: 13, 17, 18, 26, 27, 28, 29	<b>5</b> Fishing Rise: 13, 20, 27, 31 Set: 7, 14, 21, 28 Good: 13, 17, 18, 26, 27, 28, 29	<b>6</b> Fishing Rise: 15, 22, 29 Set: 9, 16, 23, 30 Good: 13, 17, 18, 26, 27, 28, 29	<b>7</b> Fishing Rise: 17, 24, 31 Set: 11, 18, 25, 31 Good: 13, 17, 18, 26, 27, 28, 29

301 - 11 x 11 1/8

Click to view Pricing and Options

Item: 303  
 Size: 11 x 16 3/4  
 Imprint Area: 10 x 3 3/4

Item: 301  
 Size: 11 x 11 1/8  
 Imprint Area: 10 x 2

**Paper Stock:** 6 sheets, 50 lb. white offset, black imprint.  
**Standard Features:** 12 month (January - December) two-sided calendar filled with weather predictions, sunrise/sunset times, zodiacs, moon phases, best fishing days, weights and measures, farm records, historical events, and general information. Black tin at top.  
**Packaging:** Bulk packed in cartons.

Item: MW23  
 Size: 12 1/4 x 18 5/8  
 Imprint Area: 10 1/2 x 3 3/4

**Paper Stock:** 7 sheets, 50 lb. white offset, black imprint.  
**Standard Features:** 12 month (January - December) two-sided calendar filled with weather predictions, sunrise/sunset times, zodiacs, moon phases, best fishing days, weights and measures, farm records, historical events, and general information. Black tin at top.  
**Packaging:** Bulk packed in cartons.

# ALMANAC



JANUARY 2024						
Sunday	Monday	Tuesday	Wednesday	Thursday	Friday	Saturday
1 New Year's Day	2	3	4	5	6	7
8	9	10	11	12	13	14
15	16	17	18	19	20	21
22	23	24	25	26	27	28
29	30	31	FEBRUARY 2024			



JANUARY 2024						
Sunday	Monday	Tuesday	Wednesday	Thursday	Friday	Saturday
1	2	3	4	5	6	7
8	9	10	11	12	13	14
15	16	17	18	19	20	21
22	23	24	25	26	27	28
29	30	31	FEBRUARY 2024			

**GDGA**  
NATURAL GAS & PROPANE  
Greater Dickson Gas Authority

- Natural Gas and Propane Services
- Appliances
- 24 Hour Emergency Services

605 E. Walnut St., Dickson, TN 37055  
615-441-2830 • 800-903-8247 • gdga.com

**811**  
Know what's below  
Call before you dig.

203-F - 8 5/8 x 16 Spring

2024 Season's Greetings

**FRANKLIN ELECTRIC CO-OP**  
RUSSELLVILLE      RED BAY  
256-332-2730      256-356-4413

203 Cover View

**FRANKLIN ELECTRIC CO-OP**  
RUSSELLVILLE      RED BAY  
256-332-2730      256-356-4413

203-S - 8 5/8 x 16 Farmland

## Weather Vane

Item: 203-F (Farmland)

Item: 203-S (Spring)

Size: 8 5/8 x 16 (open)

8 5/8 x 9 (closed)

Imprint Area: 7 3/4 x 1 1/4

**Paper Stock:** Front Cover: 65 lb. cover. Pad: 50 lb. white offset. Black imprint at bottom of back sheet.

**Standard Features:** 12 month (January - December) calendar printed red and black filled with weather predictions, sunrise/sunset times, zodiacs, moon phases, best fishing days, best planting days, and general information. Full color stock photo inside cover. Season's Greetings on outside front cover.

**Packaging:** Bulk packed in cartons.

**Click to view Pricing and Options**

# 3 MONTHS at a GLANCE

## CONTOUR SCREW PRODUCTS, INC.

**PRECISION MACHINING**

BROWN & SHARPE TO 2 3/8" SWISS MACHINING TO (.787) MULTIPLE SPINDLE TO 2 1/4"

CYLINDRICAL GRINDING IONING CNC MACHINING PUNCH PRESS  
CENTERLESS GRINDING BROACHING COMPLETE SECONDARY FACILITIES

3014 MALMO DRIVE, ARLINGTON HEIGHTS, IL 60005

(847) 357-1190 FAX (847) 357-1192  
EMAIL: SALES@CONTOURSCREW.COM

### DECEMBER

Sunday	Monday	Tuesday	Wednesday	Thursday	Friday	Saturday
					1	2
3	4	5	6	7	8	9
10	11	12	13	14	15	16
17	18	19	20	21	22	23
24 31	25	26	27	28	29	30

### JANUARY 2024

Sunday	Monday	Tuesday	Wednesday	Thursday	Friday	Saturday
	1 <small>New Year's Day</small>	2	3 <small>First Quarter Moon</small>	4	5	6
7	8	9	10	11	12	13
14	15	16	17	18	19	20
21	22 <small>Martin Luther King Day</small>	23	24 <small>First Quarter Moon</small>	25	26	27
28	29	30	31 <small>Full Moon</small>			

### FEBRUARY

Sunday	Monday	Tuesday	Wednesday	Thursday	Friday	Saturday
				1	2	3
4	5	6	7	8	9	10
11	12	13	14	15	16	17
18	19	20	21	22	23	24
25	26	27	28			

JANUARY  
MW30 - 12 1/4 x 25 One color imprint

Click to view Pricing and Options

## CROWN PACKAGING CORP.

780 COLUMBIA AVE. UNIT 2  
RIVERSIDE, CA 92507

Innovative Packaging Products • Technical Service Team  
Customer Integrated Solutions • Automated Packaging Equipment

951-269-2075 • [www.crownpack.com](http://www.crownpack.com)

ISO 9001:2015 CERTIFIED

### DECEMBER

Sunday	Monday	Tuesday	Wednesday	Thursday	Friday	Saturday
					1	2
3	4	5	6	7	8	9
10	11	12	13	14	15	16
17	18	19	20	21	22	23
24 31	25	26	27	28	29	30

### JANUARY 2024

Sunday	Monday	Tuesday	Wednesday	Thursday	Friday	Saturday
	1 <small>New Year's Day</small>	2	3 <small>First Quarter Moon</small>	4	5	6
7	8	9	10	11	12	13
14	15	16	17	18	19	20
21	22 <small>Martin Luther King Day</small>	23	24 <small>First Quarter Moon</small>	25	26	27
28	29	30	31 <small>Full Moon</small>			

### FEBRUARY

Sunday	Monday	Tuesday	Wednesday	Thursday	Friday	Saturday
				1	2	3
4	5	6	7	8	9	10
11	12	13	14	15	16	17
18	19	20	21	22	23	24
25	26	27	28			

JANUARY  
MW30 - 12 1/4 x 25 Two color imprint

Click to view Pricing and Options

**Item:** MW30  
**Size:** 12 1/4 x 25  
**Imprint Area:** 11 3/4 x 5 1/2  
**Paper Stock:** 12 sheets, 50 lb. white offset, printed one or two standard colors. Black tin at top with hanger.  
**Standard Ink Colors:** PMS® 185-Red, Reflex Blue, 348-Green, Pantone Yellow, 021-Orange, 202-Burgundy, Black.  
**Standard Features:** 14 month (December - January) preprinted calendar shown three months per sheet. Current month includes memo space, American and major Canadian holidays, moon phases, and Julian dates. Black tin at top with hanger.  
**Packaging:** Bulk packed in cartons.



# 3 MONTHS at a GLANCE



**Small Calendar**  
 Item: MW14  
 Size: Open 6 x 18 3/4  
 Folds to 6 x 6 1/4  
 Imprint Area Top: 6 x 6



**Small Calendar**  
 Item: MW12 with apron  
 Size: Open 6 x 20 3/4  
 Folds to 6 x 6 1/4  
 Imprint Areas:  
 Top - 6 x 6  
 Bottom - 5 1/2 x 1 3/4



**Large Calendar**  
 Item: MW15  
 Size: 10 3/4 x 33 3/4  
 Folds to 10 3/4 x 9 3/4  
 Imprint Area Top: 10 3/4 x 8



**Large Calendar**  
 Item: MW13 with apron  
 Size: 10 3/4 x 35  
 Folds to: 10 3/4 x 10 1/4  
 Imprint Areas:  
 Top - 10 3/4 x 8  
 Bottom - 10 1/4 x 1 1/2

[Click to view Pricing and Options](#)

**Paper Board Stock:** White stock coated one side, printed one to full color. Exact PMS matches not available.

**Calendar Pad:** Three 14 month (December – January) calendar pads printed in black and red ink only on white offset. Includes American holidays.

**Standard Features:** Calendar pads wire-o bound into board. Tearing off calendar sheets allows three months to be visible at one time.

**Binding:** Black Wire-O.

**Packaging:** Bulk packed in cartons.

# COMMERCIAL



**First American Title™**

2010 Forest Avenue | Great Bend, KS 67530

Office 620.793.3781 | Fax 620.793.5475

## January 2024

SUN	MON	TUE	WED	THU	FRI	SAT
	<b>1</b>	<b>2</b>	<b>3</b>	<b>4</b>	<b>5</b>	<b>6</b>
	New Year's Day 1/01/24	2/01/24	Third Quarter Moon 3/03/24	4/01/24	5/01/24	6/01/24
<b>7</b>	<b>8</b>	<b>9</b>	<b>10</b>	<b>11</b>	<b>12</b>	<b>13</b>
7/01/24	8/01/24	9/01/24	10/01/24	New Moon 11/08/24	12/01/24	13/01/24
<b>14</b>	<b>15</b>	<b>16</b>	<b>17</b>	<b>18</b>	<b>19</b>	<b>20</b>
14/01/24	Martin Luther King Day 15/01/24	16/01/24	First Quarter Moon 17/01/24	18/01/24	19/01/24	20/01/24
<b>21</b>	<b>22</b>	<b>23</b>	<b>24</b>	<b>25</b>	<b>26</b>	<b>27</b>
21/01/24	22/01/24	23/01/24	24/01/24	Full Moon 25/01/24	26/01/24	27/01/24
<b>28</b>	<b>29</b>	<b>30</b>	<b>31</b>			
28/01/24	29/01/24	30/01/24	31/01/24			
					December 2023	January 2024
					S M T W T F S	S M T W T F S
					3 4 5 6 7 8 9	1 2 3 4 5 6 7
					10 11 12 13 14 15 16	8 9 10 11 12 13 14
					17 18 19 20 21 22 23	15 16 17 18 19 20 21
					24 25 26 27 28 29 30	22 23 24 25 26 27 28
						29 30 31

JAN

1818 - 18 x 18 3/4



[Click to view Pricing and Options](#)

**Item:** 1818  
**Size:** 18 x 18 3/4  
**Imprint Area:** 17 x 5 1/2 Top of Calendar  
**Paper Stock:** 12 sheets, 50 lb. white offset, printed one or two standard colors.  
**Standard Ink Colors:** PMS® 185-Red, Reflex Blue, 348-Green, Pantone Yellow, 021-Orange, 202-Burgundy, Black.  
**Standard Features:** 12 month (January - December) preprinted calendar in black and red. Black tin at top with hanger.  
**Packaging:** Bulk packed in cartons.



**Home INSURANCE AGENCY**  
*Leland, Mississippi*  
 Est. 1918

**Insurance of All Kinds**  
 Rob O'Reilly | Nolan Andrews  
 Leland, Mississippi 38756  
 Phone 662-686-4441

## January 2024

SUN	MON	TUE	WED	THU	FRI	SAT
	<b>1</b>	<b>2</b>	<b>3</b>	<b>4</b>	<b>5</b>	<b>6</b>
	New Year's Day 1/01/24	2/01/24	Third Quarter Moon 3/03/24	4/01/24	5/01/24	6/01/24
<b>7</b>	<b>8</b>	<b>9</b>	<b>10</b>	<b>11</b>	<b>12</b>	<b>13</b>
7/01/24	8/01/24	9/01/24	10/01/24	New Moon 11/08/24	12/01/24	13/01/24
<b>14</b>	<b>15</b>	<b>16</b>	<b>17</b>	<b>18</b>	<b>19</b>	<b>20</b>
14/01/24	Martin Luther King Day 15/01/24	16/01/24	First Quarter Moon 17/01/24	18/01/24	19/01/24	20/01/24
<b>21</b>	<b>22</b>	<b>23</b>	<b>24</b>	<b>25</b>	<b>26</b>	<b>27</b>
21/01/24	22/01/24	23/01/24	24/01/24	Full Moon 25/01/24	26/01/24	27/01/24
<b>28</b>	<b>29</b>	<b>30</b>	<b>31</b>			
28/01/24	29/01/24	30/01/24	31/01/24			
					December 2023	January 2024
					S M T W T F S	S M T W T F S
					3 4 5 6 7 8 9	1 2 3 4 5 6 7
					10 11 12 13 14 15 16	8 9 10 11 12 13 14
					17 18 19 20 21 22 23	15 16 17 18 19 20 21
					24 25 26 27 28 29 30	22 23 24 25 26 27 28
						29 30 31

JANUARY

MW22 - 12 1/4 x 18 1/2

[Click to view Pricing and Options](#)

**Item:** MW22  
**Size:** 12 1/4 x 18 1/2  
**Imprint Area:** 11 3/4 x 8 1/4  
**Paper Stock:** 13 sheets, 50 lb. white offset, printed one or two standard colors. Black tin at top with hanger.  
**Standard Ink Colors:** PMS® 185-Red, Reflex Blue, 348-Green, Pantone Yellow, 021-Orange, 202-Burgundy, Black.  
**Standard Features:** 13 month (December - December) preprinted calendar includes American and major Canadian holidays, moon phases, and Julian dates. Black tin at top with hanger.  
**Packaging:** Bulk packed in cartons.

# COMMERCIAL



872 Park Road | Blandon, PA 19510 | 610-926-4567 | StoneyCreekRentals.com

**January 2024**

SUN	MON	TUE	WED	THU	FRI	SAT
	1 New Year's Day	2	3 Third Quarter Moon	4	5	6
	11	12	13	14	15	16
	18 New Moon	19	20	21	22	23
	25 W. Moon	26	27	28	29	30

Help Your Patients Live Their Best Life with Better Life Home Health

- ★ Better Life's team of experts keep your patients at home and out of the hospital, by coordinating their physical, occupational, speech therapy, and in-home nursing needs
- ★ Better Life is a Five-Star rated agency by the Centers for Medicare & Medicaid (CMS)
- ★ Better Life is a Five-Star rated agency by the Community Health Accreditation Program (CHAP)
- ★ Better Life provides quality, experienced home health care and accepts Medicare and private pay insurance
- ★ Better Life is a non-profit with a longstanding reputation as a valued member of the community since 2009

Call 352.307.0073 today, or fax a referral to 352.307.2073.

For more information, visit [BetterLifeHH.com](http://BetterLifeHH.com)

15400 S. US Highway 441, Suite 9  
Sarasota, FL 34231

**January 2024**

SUN	MON	TUE	WED	THU	FRI	SAT
	1 New Year's Day	2	3 Third Quarter Moon	4	5	6
7	8	9	10	11	12	13
14	15	16	17	18	19	20
21	22	23	24	25	26	27
28	29	30	31			

MW1C - 12 x 17 3/8

**Pelican Construction Supplies**  
 "your concrete accessory source"  
 305 23rd Street, Kenner, LA 70062  
 Ph: 504-468-1234 • Cell: 504-382-1614 • Fax: 504-468-1211

**January 2024**

SUNDAY	MONDAY	TUESDAY	WEDNESDAY	THURSDAY	FRIDAY	SATURDAY
	1 New Year's Day	2	3	4	5	6
7	8	9	10	11	12	13
14	15 Martin Luther King Day	16	17	18	19	20
21	22	23	24	25	26	27
28	29	30	31	MEMOS		

1825 - 19 x 25

**Click to view Pricing and Options**

**Item:** MW1C  
**Size:** 12 x 17 3/8  
**Imprint Area:** 12 x 8 1/8

**Item:** MW3C  
**Size:** 17 x 24  
**Imprint Area:** 17 x 12

**Image Paper Stock:** Gloss cover, printed one to full color. Submit your own custom artwork or use one of our stock photos. Exact PMS matches not available.

**Calendar Pad:** January – December (12 months) calendar printed in black and red ink only on white offset. Includes American holidays, moon phases, and Julian dates. Last sheet features two years at a glance.

**Standard Features:** Calendar pad stapled to bottom of image sheet. Black tin at top with hanger.

**Packaging:** Bulk packed in cartons.

**Item:** 1825  
**Size:** 19 x 25  
**Imprint Area:** 17 1/2 x 7 Top of Calendar

**Image Paper Stock:** Matte cover printed one to full color.

**Calendar Pad:** 12 sheets, 50 lb. white offset printed 185 Red and Reflex Blue.

**Standard Features:** Calendar pad stapled to bottom of image sheet. Black tin at top with hanger.

**Packaging:** Bulk packed in cartons.



# CONTRACTOR

\* Six pre-printed color combinations or choose your own custom color.



MW20A - 18 x 25

Process Blue & Black



MW20C - 18 x 25

165-Red & Black



WA107 Patriotic



MW20B Black



MW20T 165-Orange & Black



MW20G 354-Green & Black



MW20Z Custom

\* Bars printed to match imprint

- Item: MW20A (Process Blue and Black calendar)
- Item: MW20B (Black calendar)
- Item: MW20C (185-Red and Black calendar)
- Item: MW20G (354-Green and Black calendar)
- Item: MW20T (165-Orange and Black calendar)
- Item: MW20Z (Custom Color calendar)
- Item: WA107 Patriotic (Reflex Blue and 485 Red)
- Size: 18 x 25
- Imprint Area: 17 x 4 1/2

**Paper Stock:** 13 sheets, 50 lb. white offset, printed one or two standard colors. Black tin at top with hanger.

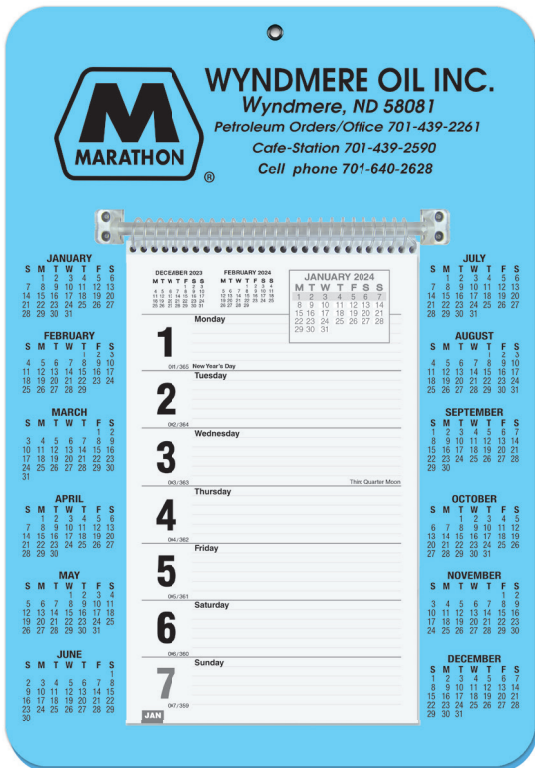
**Standard Ink Colors:** PMS® 185-Red, 485-Red, Reflex Blue, 348-Green, 354-Green, Pantone Yellow, 021-Orange, 165-Orange, 202-Burgundy, Black.

**Standard Features:** 13 month (December - December) preprinted calendar includes memo lines in date blocks along with symbols denoting days elapsed and remaining in the year, work days remaining without Saturdays and Sundays, and work days remaining without Sundays. Includes American and major Canadian holidays and moon phases.

**Packaging:** Bulk packed in cartons.

[Click to view Pricing and Options](#)

# WEEKLY WALL



WCW4 - 9 X 12 1/4 Monday start

Full Color



WCW7 - 7 X 12 1/4 Sunday start

Full Color



WCW5 - 7 x 13 Sunday start

Foil Stamped

• Metal reinforced eyelet

[Click to view Pricing and Options](#)

**Full Color**

**Item:** WCW3 Sunday start

**Item:** WCW4 Monday start

**Size:** 9 x 12 1/4

**Imprint Area Top:** 7 3/4 x 2 1/2

**Item:** WCW7 Sunday start

**Item:** WCW6 Monday start

**Size:** 7 x 12 1/4

**Imprint Area Top:** 6 1/4 x 2 1/2

**Foil Stamped**

**Item:** WCW5 Sunday start

**Item:** WCW2 Monday start

**Size:** 7 x 13

**Imprint Area:** 2 1/2 x 6 1/4

**Calendar Board:** Heavyweight board with full color or foil stamped imprint. See board colors at [www.drum-line.com](http://www.drum-line.com). See foil colors page 37.

**Standard Features:** Durable single rod design to prevent breakage. WCW2/5 - Die cut easel back for table or desk included.

**Calendar Sheets:** Week at a glance with room to write. Monday start - back of all sheets lined for notes. Sunday start - miscellaneous information on back of all sheets.

**Packaging:** Shrink-wrapped 5 per package.



• Save calendar pages and notes for future reference by flipping the page over the plastic bar.



• Optional die cut easel back for table or desk available.



# DAILY



DD3 - 9 x 12 1/4

Full Color

[Click to view Pricing and Options](#)



DD2 - 6 x 12 1/4

Full Color

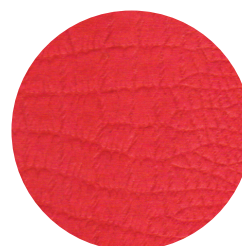
[Click to view Pricing and Options](#)



DD1 - 7 x 13

Foil Stamped

[Click to view Pricing and Options](#)



• New! Rich alligator embossing available. See options.

**Item:** DD1  
**Size:** 7 x 13  
**Imprint Area:** 5 3/4 x 5 1/4

**Item:** DD2  
**Size:** 6 x 12 1/4

**Item:** DD3  
**Size:** 9 x 12 1/4

365 day calendar pad mounted to heavyweight board. Available with full color or foil stamped imprint. See board colors at [www.drum-line.com](http://www.drum-line.com). See foil colors page 37.

**Calendar Pad:** 4 1/8 x 5, 365 sheet calendar pad printed in black ink only on white offset. Refill pads available.

**Standard Features:** Calendar pad mounted to heavyweight board with white posts and four round corners.

**Packaging:** Bulk packed in cartons.







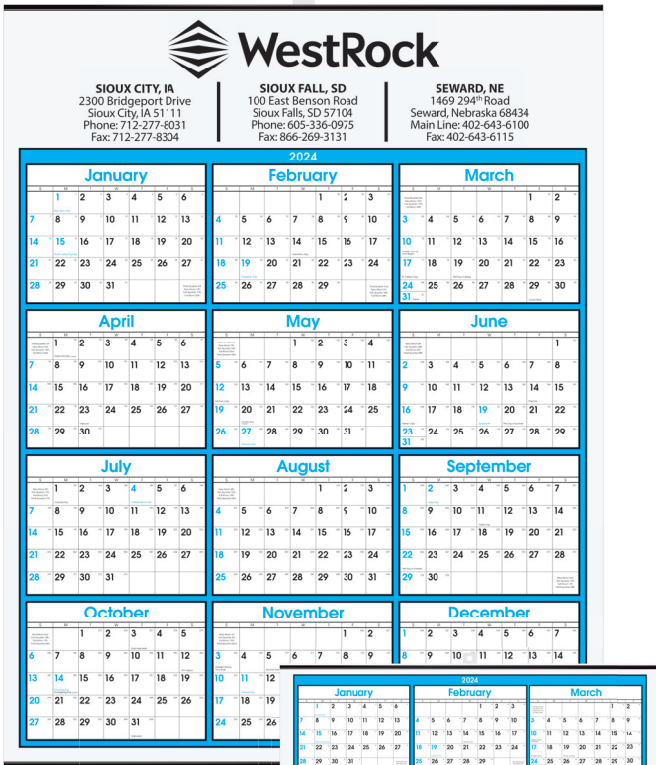
# YEAR at a GLANCE

• Choose top or center imprint



2281M - 22 x 28

Center Imprint



2280 - 22 x 28

Top Imprint



2281 - 22 x 28

Top Imprint



2280M - 22 x 28

Center Imprint

Item: 2280 - Top Imprint  
Item: 2280M - Center Imprint  
Size: 22 x 28  
Imprint Area: 21 x 4 1/2

Paper Stock: 100 lb. matte text.

Standard Features: 12 month year-on-a-page calendar preprinted in Process Blue and Black. Features generous memo blocks and clean, bold numbers. Includes consecutive numbers and moon phases. Black tin at top (with hanger) and bottom. Black imprint.

Packaging: Bulk packed in cartons.

Item: 2281 - Top Imprint  
Item: 2281M - Center Imprint  
Imprint Area: 21 x 4 1/2

Click to view Pricing and Options

# YEAR at a GLANCE

SEED CORN  
SOYBEANS

FORAGES  
SMALL GRAINS

### Conservation Products

2024 JANUARY 2024						
SUN	MON	TUE	WED	THU	FRI	SAT
	1	2	3	4	5	6
7	8	9	10	11	12	13
14	15	16	17	18	19	20
21	22	23	24	25	26	27
28	29	30	31			

2024 FEBRUARY 2024						
SUN	MON	TUE	WED	THU	FRI	SAT
			1	2	3	
4	5	6	7	8	9	10
11	12	13	14	15	16	17
18	19	20	21	22	23	24
25	26	27	28	29		

2024 MARCH 2024						
SUN	MON	TUE	WED	THU	FRI	SAT
				1	2	
3	4	5	6	7	8	9
10	11	12	13	14	15	16
17	18	19	20	21	22	23
24	25	26	27	28	29	30

2024 APRIL 2024						
SUN	MON	TUE	WED	THU	FRI	SAT
	1	2	3	4	5	6
7	8	9	10	11	12	13
14	15	16	17	18	19	20
21	22	23	24	25	26	27
28	29	30	31			

2024 MAY 2024						
SUN	MON	TUE	WED	THU	FRI	SAT
		1	2	3	4	
5	6	7	8	9	10	11
12	13	14	15	16	17	18
19	20	21	22	23	24	25
26	27	28	29	30	31	

2024 JUNE 2024						
SUN	MON	TUE	WED	THU	FRI	SAT
					1	
2	3	4	5	6	7	8
9	10	11	12	13	14	15
16	17	18	19	20	21	22
23	24	25	26	27	28	29

2024 JULY 2024						
SUN	MON	TUE	WED	THU	FRI	SAT
	1	2	3	4	5	6
7	8	9	10	11	12	13
14	15	16	17	18	19	20
21	22	23	24	25	26	27
28	29	30	31			

2024 AUGUST 2024						
SUN	MON	TUE	WED	THU	FRI	SAT
			1	2	3	
4	5	6	7	8	9	10
11	12	13	14	15	16	17
18	19	20	21	22	23	24
25	26	27	28	29	30	31

2024 SEPTEMBER 2024						
SUN	MON	TUE	WED	THU	FRI	SAT
				1	2	3
4	5	6	7	8	9	10
11	12	13	14	15	16	17
18	19	20	21	22	23	24
25	26	27	28	29	30	

2024 OCTOBER 2024						
SUN	MON	TUE	WED	THU	FRI	SAT
					1	2
3	4	5	6	7	8	9
10	11	12	13	14	15	16
17	18	19	20	21	22	23
24	25	26	27	28	29	30

2024 NOVEMBER 2024						
SUN	MON	TUE	WED	THU	FRI	SAT
					1	2
3	4	5	6	7	8	9
10	11	12	13	14	15	16
17	18	19	20	21	22	23
24	25	26	27	28	29	30

2024 DECEMBER 2024						
SUN	MON	TUE	WED	THU	FRI	SAT
						1
2	3	4	5	6	7	8
9	10	11	12	13	14	15
16	17	18	19	20	21	22
23	24	25	26	27	28	29

**Process Piping  
Materials, Inc.**  
Pipe • Valves • Flanges • Fittings

**Hobbs Office: 575-738-0206**  
3423 NW County Road, Hobbs, New Mexico 88240

2024 JULY 2024						
SUN	MON	TUE	WED	THU	FRI	SAT
	1	2	3	4	5	6
7	8	9	10	11	12	13
14	15	16	17	18	19	20
21	22	23	24	25	26	27
28	29	30	31			

2024 AUGUST 2024						
SUN	MON	TUE	WED	THU	FRI	SAT
			1	2	3	
4	5	6	7	8	9	10
11	12	13	14	15	16	17
18	19	20	21	22	23	24
25	26	27	28	29	30	31

2024 SEPTEMBER 2024						
SUN	MON	TUE	WED	THU	FRI	SAT
					1	2
3	4	5	6	7	8	9
10	11	12	13	14	15	16
17	18	19	20	21	22	23
24	25	26	27	28	29	30

2024 OCTOBER 2024						
SUN	MON	TUE	WED	THU	FRI	SAT
						1
2	3	4	5	6	7	8
9	10	11	12	13	14	15
16	17	18	19	20	21	22
23	24	25	26	27	28	29

2024 NOVEMBER 2024						
SUN	MON	TUE	WED	THU	FRI	SAT
						1
2	3	4	5	6	7	8
9	10	11	12	13	14	15
16	17	18	19	20	21	22
23	24	25	26	27	28	29

2024 DECEMBER 2024						
SUN	MON	TUE	WED	THU	FRI	SAT
						1
2	3	4	5	6	7	8
9	10	11	12	13	14	15
16	17	18	19	20	21	22
23	24	25	26	27	28	29

T928 - 19 1/2 x 27

Top Imprint

[Click to view Pricing and Options](#)

M929 - 19 1/2 x 27

Center Imprint

[Click to view Pricing and Options](#)

Item: T928 Top Imprint  
Item: M929 Center Imprint  
Size: 19 1/2 x 27  
Imprint Area: 18 x 9

Paper Stock: 100 lb. gloss text.

Standard Features: 12 month year at a glance calendar in 185-Red and Black. Black tin at top (with hanger) and bottom. Imprint in 185-Red and Black.

Packaging: Bulk packed in cartons.

# YEAR at a GLANCE



2250 - 22 x 34

• Perfect for scheduling

**Item:** 2250  
**Size:** 22 x 34  
**Imprint Area:** 19 x 3 1/2  
**Paper Stock:** 100 lb. matte text.

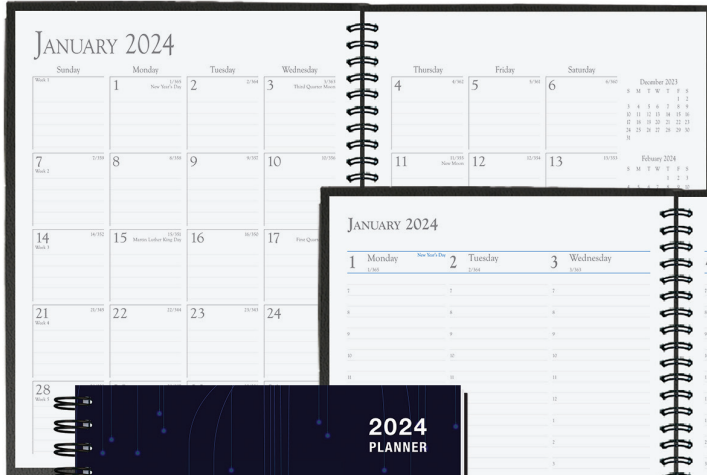
**Standard Features:** 12 month year at a glance calendar preprinted in Process Blue, 185 Red and Black with consecutive day numbers and moon phases. Black tin at top (with hanger) and bottom. Black imprint.

**Packaging:** Bulk packed in cartons.

[Click to view Pricing and Options](#)

# TIME MANAGERS

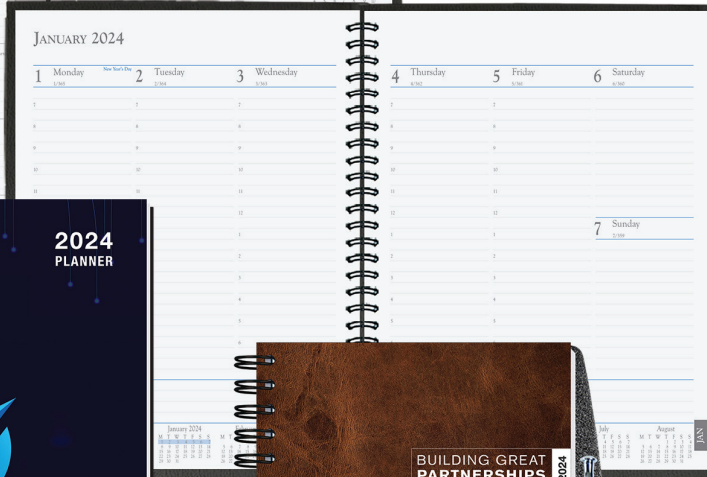
Gloss Full Color



\* Monthly & Weekly Views All in One



TM6R4 - 8 1/4 x 10 5/8



\* Glossy, full color image on durable paperboard



TM7R4-PS - 7 x 10



TM5R4 - 5 x 8

[Click to view Pricing and Options](#)



\* Handy pocket in back

**Front Cover:** 80 lb. coated cover printed full color with gloss coat, mounted to heavy black or white paperboard.

**Back Cover:** Heavy black or white paperboard.

**Pen Safe Back Cover (-PS):** Black heavyweight pen safe back with elastic closure/bookmark and pen loop. A free Dynamic Pen comes inserted in loop. Choose black, frost, blue, or red.

**Inside Sheets:** 14 months (December - January), monthly and weekly views printed in blue and gray on 60 lb. white offset with reference pages, and white double pocket inserted in the back.

**Binding:** Wire-O on left side in black, pewter or white.

**Packaging:** Shrink-wrapped 5 per package.



# TIME MANAGERS

Flex

• Monthly & Weekly Views All in One



Colors shown are a printed representation. Request swatch for exact color.

TMF8 - 8 1/4 x 10 5/8 Red (610)  
[Click to view Pricing and Options](#)

2024 MONTHLY PLANNER  
 FAN "Be a FAN of Title"  
 FLORIDA AGENCY NETWORK  
 flagency.net  
 TMF7 - 7 x 10 Natural (600)  
[Click to view Pricing and Options](#)

TMF5 - 5 x 8 Admiral Blue (411)  
[Click to view Pricing and Options](#)



• Semi-concealed binding

**Covers:** Flexible leatherette or textured paper foil stamped in one standard color. Metro leather-like covers available blind debossed or foil stamped. Two round corners.

**Inside Sheets:** 14 months (December - January), monthly and weekly views printed in blue and gray on 60 lb. white offset with reference pages, and white double pocket inserted in the back.

**Binding:** Semi-concealed black wire-o on left side.

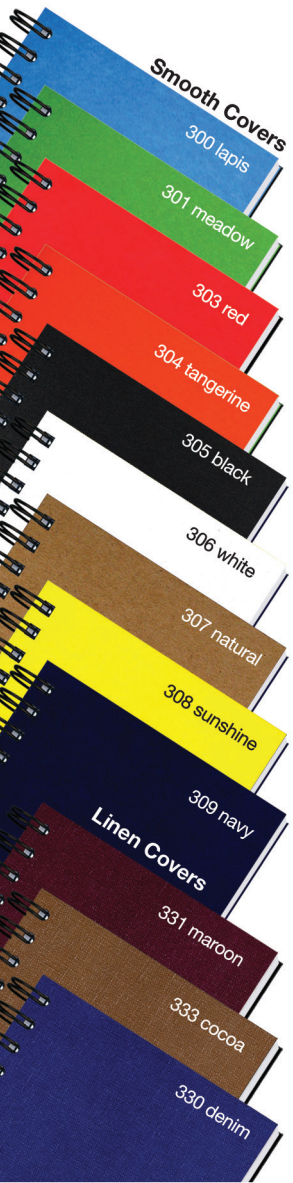
**Packaging:** Shrink-wrapped 5 per package.

Standard Foil Colors



Colors shown are a printed representation. Request swatch for exact color.

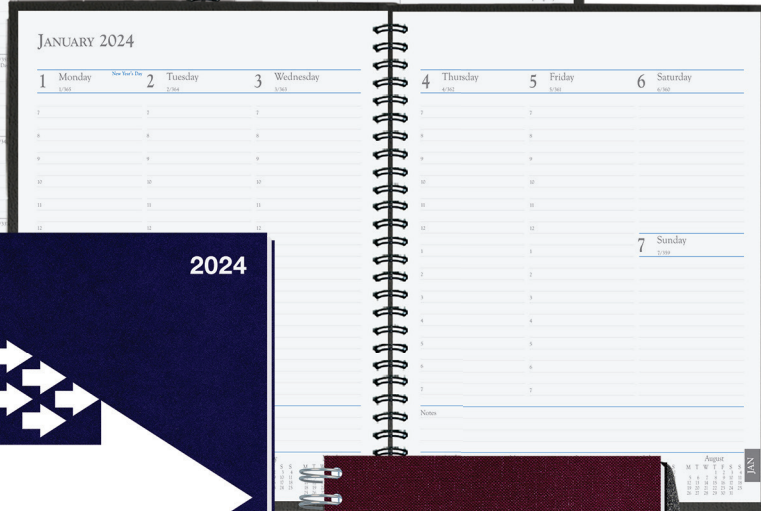
# TIME MANAGERS



Colors shown are a printed representation. Request swatch for exact color.



• Monthly & Weekly Views All in One



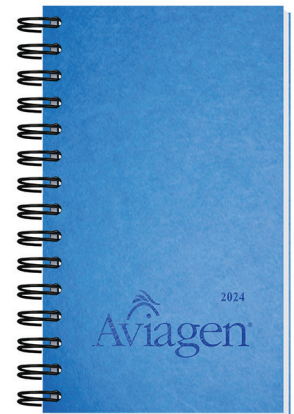
TM8 - 8 1/4 x 10 5/8 with oversized imprint

Navy (309)



TM7-PS - 7 x 10

Maroon (331)



TM5 - 5 x 8

Lapis (300)

**Covers:** Sturdy heavyweight stock, foil stamped in one standard color. See foil colors on page 37.

**Pen Safe Back Cover (-PS):** Black heavyweight pen safe back with elastic closure/bookmark and pen loop. A free Dynamic Pen comes inserted in loop. Choose black, frost, blue, or red.

**Inside Sheets:** 14 months (December - January), monthly and weekly views printed in blue and gray on 60 lb. white offset with reference pages, and white double pocket inserted in the back.

**Binding:** Wire-O on left side in black, pewter or white.

**Standard Foil Colors:** Gloss-Black, White, Ivory, Red, Green, Blue, Navy, Orange, Pink; Metallic-Silver, Gold, Copper, Red, Green, Blue.

**Packaging:** Shrink-wrapped 5 per package.

[Click to view Pricing and Options](#)

# JOURNAL PLANNERS

• Monthly planner and lined sheets



Colors shown are a printed representation. Request swatch for exact color.



MFPDJ1B-PS - 7 x 10

White(002)

[Click to view Pricing and Options](#)



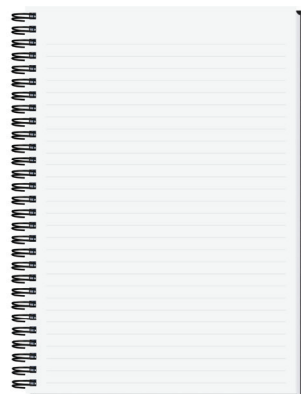
MFPDJ1 - 7 x 10

Royal Blue (006)

[Click to view Pricing and Options](#)



Colors shown are a printed representation. Request swatch for exact color.



Hybrid planner includes ruled sheets!

## Embossed Cover

**Cover:** Heavyweight 80pt. paperboard with embossed alligator pattern, foil stamped in one standard color. See foil colors on page 37.

**Back Cover (-PS):** Black heavyweight pen safe back with elastic closure/bookmark and pen loop. A free Dynamic Pen comes inserted in loop. Choose black, frost, blue, or red.

**Inside Sheets:** 60 lb. white offset, 14 months (December - January) followed by 50 sheets printed with light gray rules on both sides.

## Smooth Cover

**Cover:** Sturdy heavyweight paperboard or poly, foil stamped in one standard color. See foil colors on page 37.

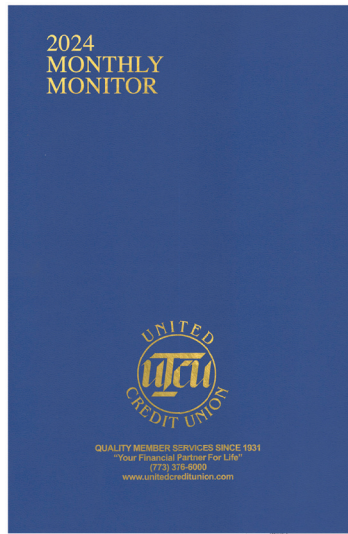
**Back Cover (-PS):** Black heavyweight pen safe back with elastic closure/bookmark and pen loop. A free Dynamic Pen comes inserted in loop. Choose black, frost, blue, or red.

**Inside Sheets:** 60 lb. white offset, 14 months (December - January) followed by 50 sheets printed with light gray rules on both sides.

**Binding:** Wire-O bound on left side in black. Pewter or white upon request.

**Packaging:** Shrink-wrapped 5 per package.

# MONTHLY



MFP1 - 6 1/2 x 10 Cobalt Blue (608)



MFP24 - 8 1/4 x 10 3/4



MFP2 - 8 1/4 x 10 3/4 Black (113)

[Click to view Monthly Pocket Pricing and Options](#)

## Foil Stamped

**Cover:** Flexible leatherette or textured paper, foil stamped in one standard color. Metro leather-like covers available blind debossed or foil stamped. See foil colors on page 37.

**Standard Foil Colors:** Gloss-Black, White, Ivory, Red, Green, Blue, Navy, Orange, Pink; Metallic-Silver, Gold, Copper, Red, Green, Blue.

**Packaging:** MFP1/MFP2: Shrink-wrapped 10 per package. MPC2: Banded 10 per bundle.

## Full Color

**Cover:** White 10 pt. coated one side, printed full color with clear coat on outside front and/or back. Front and back copy can be same or different. Back will be blank unless otherwise requested.

**Inside Sheets:** Monthly calendar view, white offset printed gray ink on two sides. No customization available. Includes 14 months (December – January).

**Binding:** Bound on the left side with two staples. Square corners.

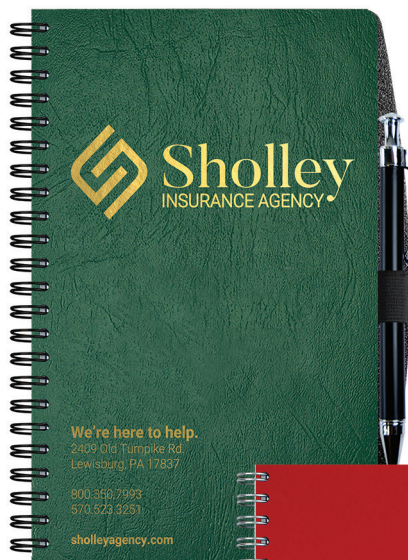
**Packaging:** MFP14/MFP24: Shrink-wrapped 10 per package. MPC1: Banded 10 per bundle.



# WEEKLY



DC14-PS - Full Color



DC1F-PS - Flex Green (111)



DC1P - Poly

Cherry Red (075)



Colors shown are a printed representation. Request swatch for exact color.

**Size:** 5 1/4 x 8 1/4 **Foil Imprint Area:** 16 sq. in.

**Poly Cover:** 30 pt. poly front, foil stamped in one standard color. White heavyweight 24 pt. coated one side back. Poly back available, see options below.

**Flex Covers:** Navy, Green, Red, or Black leatherette, foil stamped in one standard color on front cover.

**Full Color Cover:** White 15 pt. coated one side, printed one to full color with clear coat. White 24 pt. back.

**Pen Safe Back Cover (-PS):** Black heavyweight back with elastic closure/bookmark and pen loop. A free Dynamic Pen comes inserted in loop. Choose Black, Blue, Red, or Frost.

**Standard Foil Colors:** Gloss-Black, White, Ivory, Red, Green, Blue, Navy, Orange, Pink; Metallic-Silver, Gold, Copper, Red, Green, Blue.

**Inside Sheets:** January - December week at a glance calendar sheets with space for notes.

**Binding:** Wire-O bound on left side in black, pewter, or white.

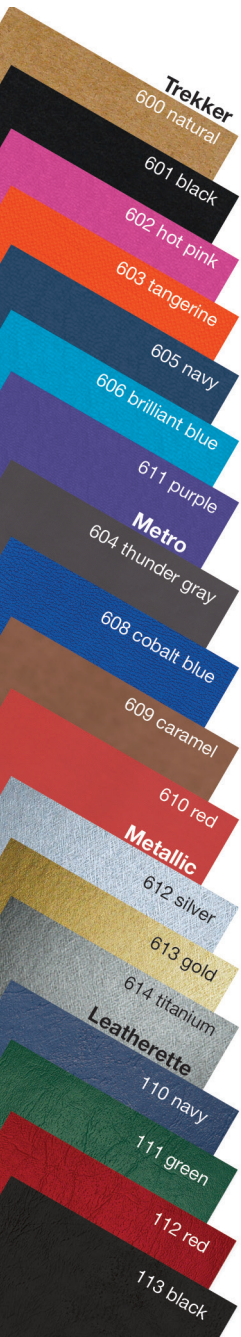
**Packaging:** Shrink-wrapped 10 per package.

[Click to view Pricing and Options](#)

# ACADEMIC

## Monthly

• 14 Months!



AFP14 - 6 1/2 x 10



AFP1 - 6 1/2 x 10

Red (112)



AFP24 - 8 1/4 x 10 3/4

[Click to view Pricing and Options](#)

### Full Color

**Cover:** White 10 pt. coated one side, printed full color with clear coat on outside front and/or back. Front and back copy can be same or different. Back will be blank unless otherwise requested.

**Inside Sheets:** Monthly calendar view, white offset printed gray ink on two sides. No customization available. Includes 14 months (July – August).

**Binding:** Bound on the left side with two staples. Square corners.

**Packaging:** Shrink-wrapped 10 per package.

### Foil Stamped

**Cover:** Flexible leatherette or textured paper, foil stamped in one standard color. See foil colors on page 37. Metro leather-like covers available blind debossed or foil stamped.

**Inside Sheets:** Monthly calendar view, white offset printed gray ink on two sides. No customization available. Includes 14 months (July-August).

**Binding:** Bound on the left side with two staples. Square corners.

**Packaging:** Shrink-wrapped 10 per package.

Colors shown are a printed representation. Request swatch for exact color.

# ACADEMIC

## Journal Planner

• Academic planner and lined sheets



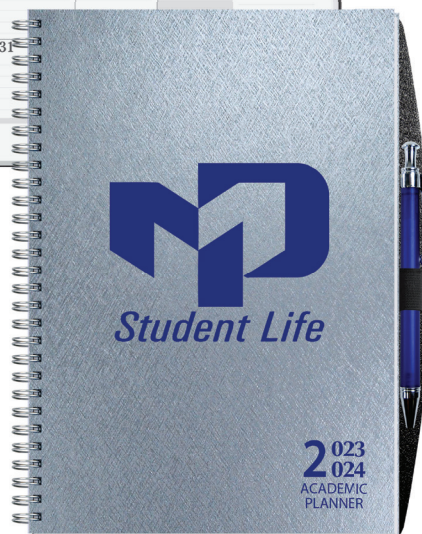
Colors shown are a printed representation. Request swatch for exact color.



AFPDJ1B - 7 x 10

Pine (007)

[Click to view Pricing and Options](#)



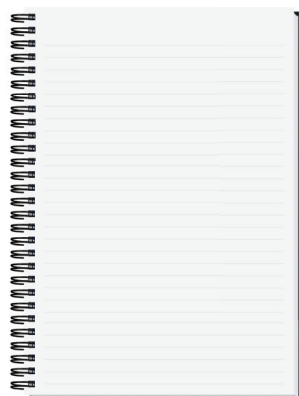
AFPDJ1-PS - 7 x 10

Silver (156)

[Click to view Pricing and Options](#)



Colors shown are a printed representation. Request swatch for exact color.



Hybrid planner includes ruled sheets!

### Embossed Cover

**Cover:** Heavyweight 80pt. paperboard with embossed alligator pattern, foil stamped in one standard color. See foil colors on page 37.

**Back Cover (-PS):** Black heavyweight pen safe back with elastic closure/bookmark and pen loop. A free Dynamic Pen comes inserted in loop. Choose black, frost, blue, or red.

**Inside Sheets:** 60 lb. white offset, 14 months (July-August) followed by 50 sheets printed with light gray rules on both sides.

### Smooth Cover

**Cover:** Sturdy heavyweight paperboard or poly, foil stamped in one standard color. See foil colors on page 37.

**Back Cover (-PS):** Black heavyweight pen safe back with elastic closure/bookmark and pen loop. A free Dynamic Pen comes inserted in loop. Choose black, frost, blue, or red.

**Inside Sheets:** 60 lb. white offset, 14 months (July-August) followed by 50 sheets printed with light gray rules on both sides.

**Binding:** Wire-O bound on left side in black. Pewter or white upon request.

**Packaging:** Shrink-wrapped 5 per package.

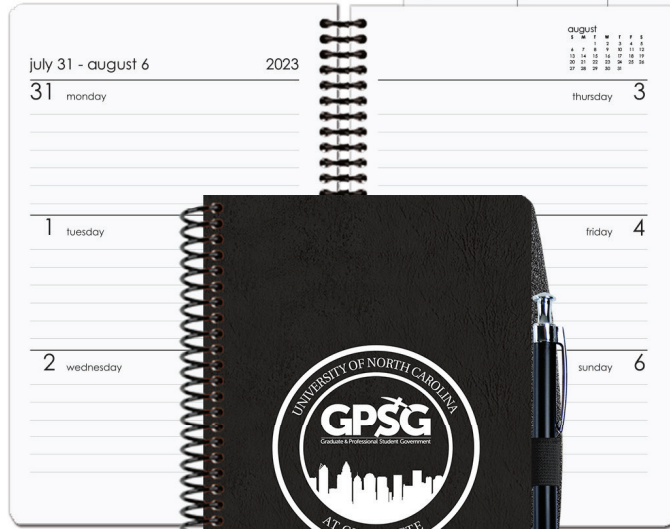
# ACADEMIC

Weekly



DC2P

Navy (052)



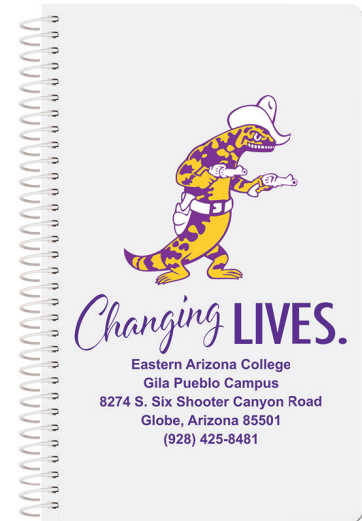
DC2F - Flex

Black (113)



• Plastic Coil for Durability

• Monthly & Weekly Views All in One



DC24 - Full Color

**Size:** 5 1/4 x 8 1/4

**Poly Cover:** 30 pt. poly front, foil stamped in one standard color. See cover colors page 41. White heavyweight 24 pt. back. See options for poly back.

**Flex Covers:** Navy, Green, Red, or Black leatherette, foil stamped in one standard color on front cover. See colors page 41.

**Full Color Covers:** White 15 pt. coated one side, printed one to full color with clear coat. White heavyweight 24 pt. back. Imprint not available.

**Pen Safe Back Cover (-PS):** Black heavyweight back with elastic closure/bookmark and pen loop. A free Dynamic Pen comes inserted in loop. Choose Black, Blue, Red, or Frost.

**Standard Foil Colors:** Gloss-Black, White, Ivory, Red, Green, Blue, Navy, Orange, Pink; Metallic-Silver, Gold, Copper, Red, Green, Blue.

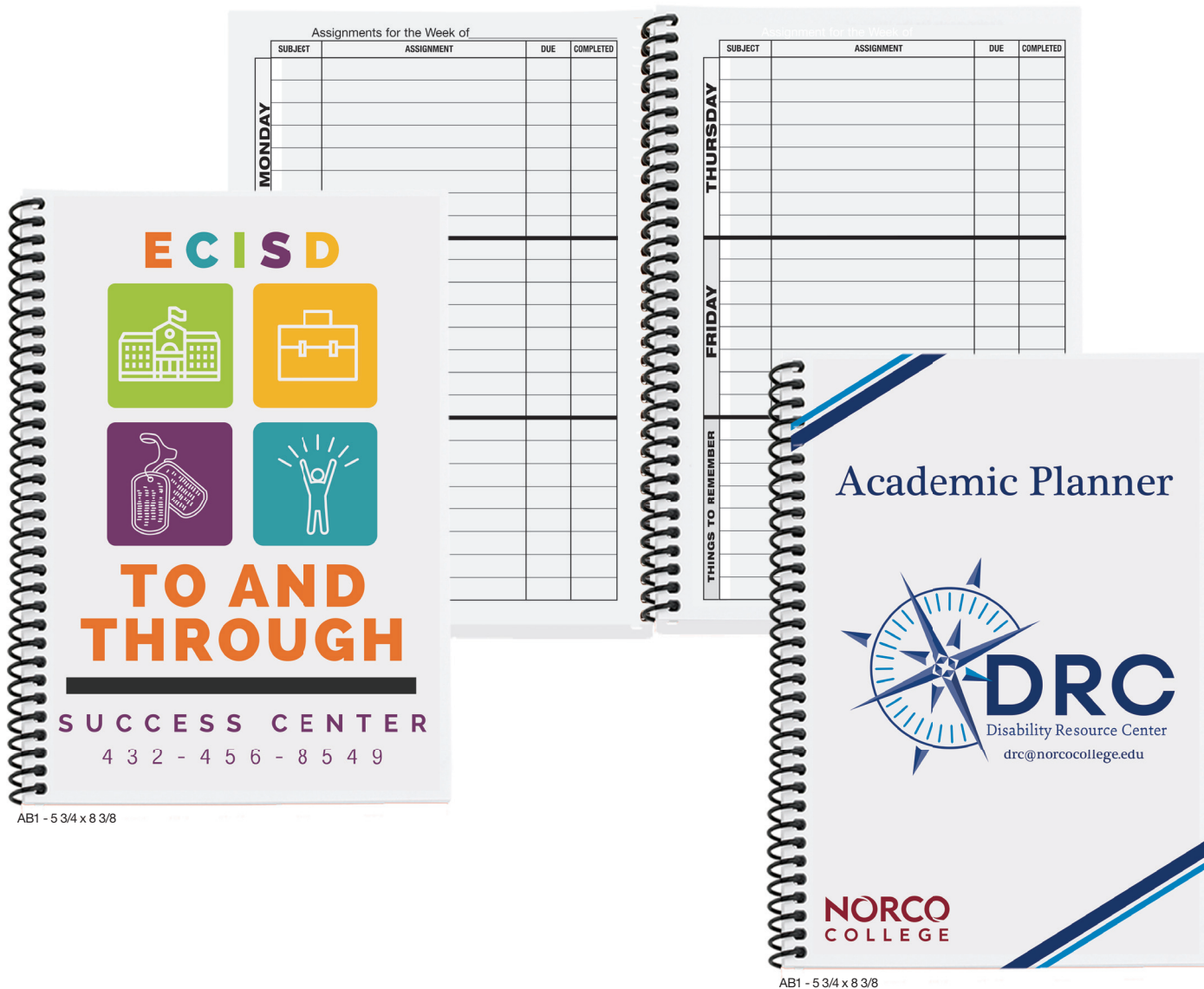
**Inside Sheets:** August-August (13 months) one week per two page spread. Includes month at a glance pages at the beginning of each month.

**Binding:** Plastic coil bound on left side in black. White available upon request.

**Packaging:** Shrink-wrapped 10 per package.

[Click to view Pricing and Options](#)

# ASSIGNMENT



AB1 - 5 3/4 x 8 3/8

AB1 - 5 3/4 x 8 3/8

**Covers:** White 10 pt. coated one side, printed one to full color with clear coat. Bleed on all sides at no extra charge. Back cover will be blank.

**Stock Inside Sheets:** 50 lb. white offset printed one color, two sides. Weekly (41 weeks) format with class schedule, school events schedule, e-mail directory and student contact sheet.

**Binding:** Plastic coil bound on left side. Black or white coil. Black will be used unless specified. Other colors available, call for quote.

**Standard Ink Colors:** PMS® 185-Red, Reflex Blue, 348-Green, Pantone Yellow, 021-Orange, 202-Burgundy, Black.

**Packaging:** Bulk packed in cartons.

[Click to view Pricing and Options](#)



# MADE IN USA

## **American Made at Time of Order**

Products are designed and manufactured in our Arkansas facility to fit your customer's needs.

## **Reliable Fulfillment**

Enjoy better quality control, inventory management and 2-3 day transit time to most U.S. locations.

## **Be Part of Our Family**

Expect personalized attention from a supplier you can trust. We have been serving customers since 1928.

[www.drum-line.com](http://www.drum-line.com)

**DRUM-LINE**  
The Complete Source for Paper Products



**American Owned, American Made, American Jobs.**