



# 2025 Holiday GIFT IDEAS

think   
**TEKWELD**

OUR FULL LINE AT [TEKWELD.COM](http://TEKWELD.COM) • ASI 90807 • SAGE 67569 • PPAI 266346





# TABLE OF CONTENTS



BESTSELLERS **04 - 09**



APPAREL **10 - 19**



ACRYLIC **20 - 23**



BAGS + TOTES **24 - 31**





BACKPACKS 32 - 33



BLANKETS 58 - 63



STICKERS 34 - 35



KITS + GIFT SETS 64 - 73



TUMBLERS + BOTTLES 36 - 53



DIRECT MAIL 74 - 75



MUGS 54 - 57



PACKAGING 76 - 81



# BEST SELLERS

NEW CERAMIC COASTERS + BAGS + DRINKWARE



\*Pricing subject to change due to ongoing uncertainty regarding overseas tariffs. Please refer to website for the latest pricing.  
OUR FULL LINE AT [TEKWELD.COM](https://www.tekweld.com) | ASI: 90807 | SAGE: 67569 | PPAI: 266346



new

## ROUND ABSORBENT CERAMIC COASTER AC100

## SQUARE ABSORBENT CERAMIC COASTER AC101

**Material:** Dolomite

**Features:** These coasters have an absorbent earthenware dolomite ceramic surface that absorbs spills in less than 15 seconds, and protects tabletops with a natural cork backing. The set of 4 coasters is packaged in a kraft box with an optional full color decal.

**Imprinting Options:** Full Color. Direct Imprint

**Packaging:** Bulk



[CLICK HERE FOR PRICING + MORE INFO](#)



new

## RPET DELUXE PADDED BELT BAG / FANNY PACK BAG602

**Material:** Polyester

**Features:** This bag can be worn as a hip pack, cross-body bag, or chest bag. It has a side release buckle and an adjustable 41" webbed strap. This fanny pack is made from recycled polyester (rPET), which is produced by melting down plastic water bottles and other materials.

**Imprinting Options:** Direct Print, Full Color

**Colors:** Black, Blue Red



[CLICK HERE FOR PRICING + MORE INFO](#)







## RPET ESSENTIALS CROSSBODY / SLING BAG BAG702

**Material:** rPET Microfiber

**Features:** Crossbody / Sling Bag with adjustable strap. Keeping your valuables organized and within easy reach is a breeze with the built-in storage compartment. You may style and fit it any way you want with the adjustable strap. To keep your essentials organized and within easy reach, the Essentials Crossbody Bag / Sling bag has a front zipper and pockets inside + adjustable strap.

**Imprinting Options:** 1-Color Direct Print, Full Color

**Packaging:** Bulk



[CLICK HERE FOR PRICING + MORE INFO](#)



## RPET ESSENTIALS DUAL CROSSBODY BAG / SLING BAG WITH ADJUSTABLE STRAP BAG704

**Material:** rPET Microfiber

**Features:** An adjustable strap and buckle allow for a comfortable and easy on-and-off fit, while a zipper pull on the accessory compartment makes it easy to retrieve smaller goods. 420D polyester, which has been verified to be environmentally friendly by RPET, is here to fulfill all of your sustainable needs.

**Imprinting Options:** 1-Color Direct Print, Full Color

**Packaging:** Bulk



[CLICK HERE FOR PRICING + MORE INFO](#)



## SUSTAINABLE CORK & RPET BACKPACK COOLER BAG706

**Material:** 600d polyester, PU, cork cloth, food-safe PEVA lining

**Features:** A small but mighty backpack bag, the Cork and RPET Commuter Backpack is just the bag for wherever your day takes you. Perfect for hanging out with friends or adventuring around town, this bag features a spacious double-zippered main compartment for the essentials and a smaller front pocket for the small stuff that you need to grab quickly.

**Imprinting Options:** 1-Color Direct Print, Full Color

**Packaging:** Bulk



[CLICK HERE FOR PRICING + MORE INFO](#)



\*Pricing subject to change due to ongoing uncertainty regarding overseas tariffs. Please refer to website for the latest pricing.

OUR FULL LINE AT [TEKWELD.COM](http://TEKWELD.COM) | ASI: 90807 | SAGE: 67569 | PPAI: 266346



new

## 28 OZ STAINLESS STEEL 2 IN 1 SPOUT AND STRAW WATER BOTTLE BTL143

**Material:** Stainless Steel

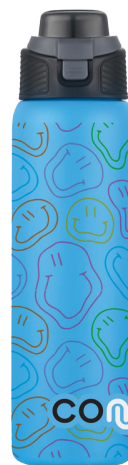
**Features:** This is a popular and versatile drinkware solution. The convenient carry loop also locks the spout cover in place, and the locked spout cover flips open at the push of a button. The dual action lid has a small opening that works like a straw and a larger opening for taking gulps.

**Imprinting Options:** Direct Print, Full Color, Full Color Wrap

**Packaging:** Bulk



[CLICK HERE FOR PRICING + MORE INFO](#)



new

## 3-IN-1 STAINLESS STEEL 20 OZ TUMBLER AND CAN COOLER WITH HANDLE BTL144

**Material:** Stainless Steel

**Features:** This tumbler is truly the only drinkware your customers need. The upper, handled portion serves as a 20 oz tumbler, while the lower gray part is an 8 oz cup that also serves as a stainless steel insulator for 12 oz cans.

**Imprinting Options:** Full Color on Bottom, Direct Print

**Packaging:** Bulk



[CLICK HERE FOR PRICING + MORE INFO](#)



new

## 22 OZ GLASS WATER BOTTLE WITH NEOPRENE PROTECTIVE SLEEVE BTL140

**Material:** Glass, Bamboo

**Features:** Hydrate with this 22 oz glass bottle with a protective, insulating, waterproof neoprene sleeve. The clear glass bottle has a screw-on stainless steel lid with a decorative bamboo top.

**Imprinting Options:** Direct Print

**Packaging:** Bulk



[CLICK HERE FOR PRICING + MORE INFO](#)



\*Pricing subject to change due to ongoing uncertainty regarding overseas tariffs. Please refer to website for the latest pricing.

OUR FULL LINE AT [TEKWELD.COM](http://TEKWELD.COM) | ASI: 90807 | SAGE: 67569 | PPAI: 266346





new

## 16 OZ CERAMIC MUG WITH WOODEN LID

BTL648

**Material:** Stoneware, Wood

**Features:** Discover the perfect blend of modern design and natural warmth with our 16 oz Ceramic Mug with Wooden Lid and enhance the coffee or tea experience. Admire the smooth, shiny finish and the contrasting wood lid. The lid not only traps heat in but can also be used as a coaster for the mug. Hand wash recommended.

**Imprinting Options:** Direct Print, Full Color, Laser Etched

**Packaging:** Bulk



[CLICK HERE FOR PRICING + MORE INFO](#)



## 18 OZ 15% RECYCLED CERAMIC MUG

BTL649

**Material:** Stoneware

**Features:** Enjoy coffee, tea or other beverage with a touch of eco-consciousness with our 18 oz 15% Recycled Ceramic Mug. Featuring a clean, minimalist aesthetic, comfortable handle and smooth finish, this mug will get your brand message seen with every sip.

**Imprinting Options:** Full Color, Direct Print

**Packaging:** Bulk



[CLICK HERE FOR PRICING + MORE INFO](#)



\*Pricing subject to change due to ongoing uncertainty regarding overseas tariffs. Please refer to website for the latest pricing.

OUR FULL LINE AT [TEKWELD.COM](http://TEKWELD.COM) | ASI: 90807 | SAGE: 67569 | PPAI: 266346





## 5D PRINTING

**MULTI-DIMENSIONAL CUSTOM ACRYLIC**  
 DISPLAY SIGNS - ORNAMENTS - COASTERS - PHONE STANDS  
 KEYCHAINS - MAGNETS - PRESS PASSES - PUZZLES  
 INVITATIONS - MEMORABILIA

**Material:** 1/8" Clear Acrylic

**Features:** 5D technology that gives the imprint the perception of depth and motion when viewed from different angles. Ask about the multiple border effects and different 5D styles like kaleidoscope or broken glass

**Imprinting Options:** Full Color - Full Bleed

**Packaging:** Bulk



[CLICK HERE FOR PRICING + MORE INFO](#)

**5D HOLIDAY ORNAMENTS**  
 GREAT UNIQUE EYE-CATCHING GIFT



\*Pricing subject to change due to ongoing uncertainty regarding overseas tariffs. Please refer to website for the latest pricing.  
 OUR FULL LINE AT [TEKWELD.COM](http://TEKWELD.COM) | ASI: 90807 | SAGE: 67569 | PPAI: 266346



# APPAREL

KNITTED SWEATERS + SOCKS + GLOVES + SCARVES + BEANIES



\*Pricing subject to change due to ongoing uncertainty regarding overseas tariffs. Please refer to website for the latest pricing.  
OUR FULL LINE AT [TEKWELD.COM](http://TEKWELD.COM) | ASI: 90807 | SAGE: 67569 | PPAI: 266346





## CUSTOM KNITTED SWEATERS

SWTR100

**Material:** Full Color Jacquard Weave

**Features:** Full color jacquard weave. This sweater is the perfect promotional item for holiday parties, ski resorts, clubs and any holiday-themed promotion. Sweater available in standard adult sizes XS-XXL.

**Imprinting Options:**

Full Color Process Jacquard weave

**Packaging:** Individual OPP Bag



[CLICK HERE FOR PRICING + MORE INFO](#)



## CUSTOM KNITTED SOCKS

- SOCK101 • Dress Socks
- SOCK102 • Fuzzy Socks
- SOCK103 • Comfort Ankle Socks
- SOCK104 • Baby Socks
- SOCK105 • Knee High Socks
- SOCK106 • Athletic Socks

**Material:** Cotton, Nylon and Spandex

**Features:** Full color Jacquard weave with your custom design, every pair of socks is made from scratch. Our complete sock line includes classic dress socks, fuzzy socks, comfort ankle socks, baby socks, and knee high socks.

**Imprinting Options:**

Full Color Process Jacquard weave

**Addons:** Sock Box, Hang Tag with Hook (Full color) Wrap Around Hang Tag (Full Color), Woven Tag, Bottom Of Foot design, Rubber Soles



[CLICK HERE FOR PRICING + MORE INFO](#)



\*Pricing subject to change due to ongoing uncertainty regarding overseas tariffs. Please refer to website for the latest pricing.

OUR FULL LINE AT [TEKWELD.COM](http://TEKWELD.COM) | ASI: 90807 | SAGE: 67569 | PPAI: 266346





## HAT, GLOVES AND SCARF SET

HGS500

**Material:** Full Color Jacquard Weave

**Features:** This is a stylish and practical item to promote your brand. The coordinated, matching set includes a hat, a pair of gloves and a scarf, all knit from soft, warm, 100% acrylic. This essential gear completes any winter outfit and the bold use of color will get noticed. The knit beanie and scarf are standard adult size and the scarf is a comfortable 59" long and 6.75" wide.

**Imprinting Options:** Full Color Process Jacquard Weave

**Packaging:** OPP Bag Per Set



[CLICK HERE FOR PRICING + MORE INFO](#)

\*Pricing subject to change due to ongoing uncertainty regarding overseas tariffs. Please refer to website for the latest pricing.

OUR FULL LINE AT [TEKWELD.COM](http://TEKWELD.COM) | ASI: 90807 | SAGE: 67569 | PPAI: 266346





**ALSO AVAILABLE AS A KIT**  
HGS500 - HAT, GLOVE AND SCARF KIT



## CUSTOM KNITTED SCARFS

### SCARF500

**Material:** Full Color Jacquard Weave

**Features:** Knitted scarfs are made from 100% soft acrylic yarn, bright colors, easy care. Allover design. Design is knitted in, not printed or embroidered.

**Imprinting Options:** Full Color Process

**Packaging:** Bulk



[CLICK HERE FOR PRICING + MORE INFO](#)



**ALSO AVAILABLE AS A KIT**  
HGS500 - HAT, GLOVE AND SCARF KIT



## CUSTOM KNITTED GLOVES

### GLOVE500

**Material:** Full Color Jacquard Weave

**Features:** Knitted gloves are made from 100% soft acrylic yarn, bright colors, easy care. Knitted rib cuffs, Allover design. Design is knitted in, not printed or embroidered.

**Imprinting Options:** Full Color Process

**Packaging:** Bulk



[CLICK HERE FOR PRICING + MORE INFO](#)



**ALSO AVAILABLE AS A KIT**  
HGS500 - HAT, GLOVE AND SCARF KIT





## FELT SANTA HAT

HAT511

**Material:** Non Woven Polypropylene, Pom Pom: Felt

**Features:** Spread Holiday cheer while boosting your brand. Create an impression that will last well into the new year with this fun and festive giveaway.

**Imprinting Options:** Embroidery

**Packaging:** Bulk



[CLICK HERE FOR PRICING + MORE INFO](#)



## PLUSH SANTA HAT

HAT512

**Material:** Felt

**Features:** Spread Holiday cheer while boosting your brand. Create an impression that will last well into the new year with this fun and festive giveaway.

**Imprinting Options:** Embroidery

**Packaging:** Bulk



[CLICK HERE FOR PRICING + MORE INFO](#)



## FLUFFY SANTA HAT

HAT513

**Material:** Felt

**Features:** Spread Holiday cheer while boosting your brand. Create an impression that will last well into the new year with this fun and festive giveaway.

**Imprinting Options:** Embroidery

**Packaging:** Bulk



[CLICK HERE FOR PRICING + MORE INFO](#)



\*Pricing subject to change due to ongoing uncertainty regarding overseas tariffs. Please refer to website for the latest pricing.

OUR FULL LINE AT [TEKWELD.COM](http://TEKWELD.COM) | ASI: 90807 | SAGE: 67569 | PPAI: 266346





## ELF HAT WITH BELLS

HAT514

**Material:** Felt

**Features:** Spread Holiday cheer while boosting your brand. Create an impression that will last well into the new year with this fun and festive giveaway.

**Imprinting Options:** Embroidery

**Packaging:** Bulk



[CLICK HERE FOR PRICING + MORE INFO](#)



## ELF HAT WITH EARS

HAT515

**Material:** 120gsm Non Woven Polypropylene

**Features:** Spread Holiday cheer while boosting your brand. Create an impression that will last well into the new year with this fun and festive giveaway.

**Imprinting Options:** Embroidery

**Packaging:** Bulk



[CLICK HERE FOR PRICING + MORE INFO](#)



## NON-WOVEN STOCKING

STOCK100

**Material:** 180gsm Non Woven Polypropylene

**Features:** Spread Holiday cheer while boosting your brand. Create an impression that will last well into the new year with this fun and festive giveaway.

**Imprinting Options:** Embroidery

**Packaging:** Bulk



[CLICK HERE FOR PRICING + MORE INFO](#)







## ELF STOCKING

STOCK102

**Material:** Short plush stocking with short plush felt trim and loop

**Features:** Spread Holiday cheer while boosting your brand. Create an impression that will last well into the new year with this fun and festive giveaway.

**Imprinting Options:** Embroidery

**Packaging:** Bulk



[CLICK HERE FOR PRICING + MORE INFO](#)

\*Pricing subject to change due to ongoing uncertainty regarding overseas tariffs. Please refer to website for the latest pricing.  
OUR FULL LINE AT [TEKWELD.COM](http://TEKWELD.COM) | ASI: 90807 | SAGE: 67569 | PPAI: 266346





## PLUSH STOCKING STOCK101

**Material:** Short plush stocking with short plush felt trim and loop

**Features:** Spread Holiday cheer while boosting your brand. Create an impression that will last well into the new year with this fun and festive giveaway.

**Imprinting Options:** Embroidery

**Packaging:** Bulk



[CLICK HERE FOR PRICING + MORE INFO](#)



## CUSTOM WOVEN STOCKING STOCK103

**Material:** Acrylic

**Features:** Spread holiday cheer and elevate your brand with this fun and festive giveaway! Crafted from a premium blend of 80% cotton, 15% nylon, and 5% spandex, this item is designed to leave a lasting impression well into the new year.

**Imprinting Options:** Custom Jacquard on Stocking\*

**Packaging:** Bulk



[CLICK HERE FOR PRICING + MORE INFO](#)







## COLORFUL POM POM KNITTED BEANIES HAT508

**Material:** Full Color Jacquard Weave

**Features:** Help your customers avoid the chill with these soft, comfortable knitted acrylic beanie hats with a fluffy pom pom on the top. The acrylic material retains heat and the colorful design makes a fashion statement. Includes a leather label in one location.

**Imprinting Options:** Full Color Process

**Packaging:** Bulk



[CLICK HERE FOR PRICING + MORE INFO](#)



## ACRYLIC WARM KNITTED BEANIES HAT507

**Material:** Full Color Jacquard Weave

**Features:** Confidently provide warmth and comfort throughout the day for your customers with this great cold weather accessory. The pull on beanie is stretchable and the lightweight acrylic is not highly breathable so it retains heat. Includes a woven label in one location.

**Imprinting Options:** Full Color Process

**Packaging:** Bulk



[CLICK HERE FOR PRICING + MORE INFO](#)



\*Pricing subject to change due to ongoing uncertainty regarding overseas tariffs. Please refer to website for the latest pricing.

OUR FULL LINE AT [TEKWELD.COM](http://TEKWELD.COM) | ASI: 90807 | SAGE: 67569 | PPAI: 266346





## PACKABLE BUCKET HAT HAT510

**Material:** 100% Nylon

**Features:** Foldable, waterproof bucket hat. Crafted from 100% waterproof nylon to keep you dry in unexpected showers and protect you from the rays. Take your bucket hat anywhere! It folds up compactly to clip onto your bag or belt, making it perfect for adventures on the go.

### Imprinting Options:

**Hat:** Screen Print or Embroidery

**Pouch:** Screen Print, Embroidery or Full Color

**Packaging:** Bulk



[CLICK HERE FOR PRICING + MORE INFO](#)



## TEXTING GLOVES WITH POUCH TXT-GLV100

**Features:** innovative product allows complete control of your touchscreen devices while keeping your hands warm during the cold winter months through the use of acrylic conductive thread fingertips. Add an imprint of your logo or company name to the pouch for brand exposure year round.

**Imprinting Options:** Direct

**Packaging:** Bulk



[CLICK HERE FOR PRICING + MORE INFO](#)



**ACRYLICS**  
KEY CHAINS + PHONE STANDS + ORNAMENTS + JIGSAW PUZZLES



\*Pricing subject to change due to ongoing uncertainty regarding overseas tariffs. Please refer to website for the latest pricing.  
OUR FULL LINE AT [TEKWELD.COM](http://TEKWELD.COM) | ASI: 90807 | SAGE: 67569 | PPAI: 266346





## ACRYLIC KEY CHAINS

ACR-KC2 • Up to 2 SQ. Inches

ACR-KC3 • Up to 3 SQ. Inches

ACR-KC4 • Up to 4 SQ. Inches

ACR-KC5 • Up to 5 SQ. Inches

ACR-KC6 • Up to 6 SQ. Inches

**Material:** 1/8" Clear Acrylic

**Features:** Fully customized. Full color process. Choose from a selection of stock shapes or provide your own unique design. Printed on clear acrylic. Made in the USA.

**Imprinting Options:** Full Color Process



[CLICK HERE FOR PRICING + MORE INFO](#)



## ACRYLIC ORNAMENTS

ACR-OR2 • Up to 4 SQ. Inches

ACR-OR3 • Up to 9 SQ. Inches

ACR-OR4 • Up to 16 SQ. Inches

**Material:** 1/8" Clear Acrylic

**Features:** Full color process printed on clear acrylic. Sizes up to 16 sq. inches. Includes black, gold or silver loop. Made in the USA.

**Imprinting Options:** Full Color Process

**Packaging:** Individually polybagged



[CLICK HERE FOR PRICING + MORE INFO](#)



Ginger



Snowman



Ornament



Bell



Dog Bone



Shield



Tree



Snowflake





## ROUND 1/4" ACRYLIC COASTER

ACR-PCIR

Material: 1/4" Acrylic

Imprinting Options: Full Color

Packaging: Bulk



[CLICK HERE FOR PRICING + MORE INFO](#)



**HUGE STOCK**

## PLASTIC ORNAMENTS

ORN200

Material: 1/16" Clear Plastic

**Features:** Full color, full bleed imagery with a gold or silver loop. Choose a stock shape or your own custom design. Approx. 4" x 3". Made in the USA.

Imprinting Options: Full Color



[CLICK HERE FOR PRICING + MORE INFO](#)



Ginger



Snowman



Ornament



Bell



Dog Bone



Shield



Tree



Snowflake

\*Pricing subject to change due to ongoing uncertainty regarding overseas tariffs. Please refer to website for the latest pricing.

OUR FULL LINE AT [TEKWELD.COM](http://TEKWELD.COM) | ASI: 90807 | SAGE: 67569 | PPAI: 266346



## ACRYLIC JIGSAW PUZZLES

ACR-PUZ100 • 4 PIECE-3.75" X 3.75" PUZZLE

ACR-PUZ101 • 9 PIECE-5.5" X 5.5" PUZZLE

ACR-PUZ102 • 16 PIECE-7.75" X 7.75" PUZZLE

ACR-PUZ103 • 8 PIECE-10" X 5" PUZZLE

ACR-PUZ104 • 25 PIECE-10" X 10" PUZZLE

ACR-PUZ105 • 48 PIECE-15.5" X 11.5" PUZZLE

**Material:** 1/8" Clear Acrylic

**Features:** Full color brilliance printed on 1/8" thick acrylic. Made in the USA.

**Imprinting Options:** Full Color

**Packaging:** Individually polybagged with backing card



[CLICK HERE FOR PRICING + MORE INFO](#)



## ACRYLIC PHONE STAND

ACR-PS201

**Material:** 1/8" Clear Acrylic

**Features:** Upright acrylic phone stand with a precision cut out so the phone can be charged while in the stand. Full color. Made in the USA.

**Imprinting Options:** Direct Print, Full Color

**Packaging:** Individually polybagged



[CLICK HERE FOR PRICING + MORE INFO](#)



# BAGS + TOTES

SUBLIMATED TOTES + CLEAR BAGS+ CANVAS BAGS



\*Pricing subject to change due to ongoing uncertainty regarding overseas tariffs. Please refer to website for the latest pricing.  
OUR FULL LINE AT [TEKWELD.COM](http://TEKWELD.COM) | ASI: 90807 | SAGE: 67569 | PPAI: 266346



## SUBLIMATED ZIPPERED POUCH

BAG400 • 6.5" W x 4.5" H Pouch

BAG401 • 8" W x 5" H Pouch

BAG402 • 9" W x 6" H Pouch

**Material:** Knit Poly, Black Zipper

**Features:** Full color, full bleed. Poly knit material. Made in the USA.

**Imprinting Options:** Sublimation



[CLICK HERE FOR PRICING + MORE INFO](#)



## 13.5"W X 16"H SUBLIMATED TOTE BAG BAG403

**Material:** Knit Poly

**Features:** Full color, full bleed. Poly knit material. Made in the USA.

**Imprinting Options:** Sublimation



[CLICK HERE FOR PRICING + MORE INFO](#)





## KRAFT CORK DRAWSTRING BACKPACK

BAG104/BAG104-4CP

**Material:** 600d polyester, PU and cork cloth

**Features:** This 13.75" x16.5" earthy kraft color bag has a cork accent band at the bottom and a useful front pocket. A generous imprint area on the exterior pocket places your brand message at the forefront.

**Imprinting Options:** 1-Color Direct Print, Full Color

**Packaging:** Bulk



[CLICK HERE FOR PRICING + MORE INFO](#)



## KRAFT CORK TOTE BAG

BAG205/BAG205-4CP

**Material:** 600d polyester, PU and cork cloth

**Features:** This 13.75" x16.5" earthy kraft color tote bag, made from durable 600d polyester has a cork accent band at the bottom and a useful front pocket. A generous imprint area on the exterior pocket places your brand message at the forefront.

**Imprinting Options:** 1-Color Direct Print, Full Color

**Packaging:** Bulk



[CLICK HERE FOR PRICING + MORE INFO](#)



## KRAFT CORK LUNCH COOLER

BAG301/BAG301-4CP

**Material:** 600d polyester, PU, cork cloth, food-safe PEVA lining

**Features:** This reusable, eco-friendly, sustainable cork cooler is a great alternative for carrying your lunch. This ideal lunch cooler features an adjustable strap, exterior pocket, durable zipper closure and a food-safe PEVA lining that can easily be wiped clean. Conveniently holds cans, bottles, snacks and more for a quick outing to the park, beach or work. Full color imprint option.

**Imprinting Options:** 1-Color Direct Print, Full Color

**Packaging:** Bulk



[CLICK HERE FOR PRICING + MORE INFO](#)



\*Pricing subject to change due to ongoing uncertainty regarding overseas tariffs. Please refer to website for the latest pricing.

OUR FULL LINE AT [TEKWELD.COM](http://TEKWELD.COM) | ASI: 90807 | SAGE: 67569 | PPAI: 266346

## 6 PACK COOLER SOFT LUNCHBOX BAG300

**Material:** Non-Woven, 80 gram water-resistant polypropylene coating, is PEVA insulation lined

**Features:** Carrying handle, this non-woven cooler bag is exactly what you'd need for packing a picnic, keeping drinks and lunches cool while at the beach or sporting events or simply to bring your lunch to work - ensuring a delightful, midday meal.

**Imprinting Options:** Direct Print

**Packaging:** Bulk



[CLICK HERE FOR PRICING + MORE INFO](#)



## CHANGE PURSE BAG503

**Material:** Vegan Leather

**Features:** Secure zipper keeps contents safe and the exterior features stunning full color digital printing on both sides to highlight your brand message. Made of Vegan Leather.

**Imprinting Options:** Full Color

**Packaging:** Bulk



[CLICK HERE FOR PRICING + MORE INFO](#)



## MAKEUP BAG VANITY CASE BAG504

**Material:** Vegan Leather

**Features:** It's the perfect size for makeup, deodorant and other travel-size beauty care items. Features a full length zipper for easy access and full color imprint on the exterior.

**Imprinting Options:** Full Color

**Packaging:** Bulk



[CLICK HERE FOR PRICING + MORE INFO](#)







new

## MINI BEACH TOTE

BAG518

**Material:** EVA (Ethylene Vinyl Acetate)

**Features:** A beautiful beach or pool bag with a solid base a design, so the bag will not topple over. Made from EVA, a durable rubber-like material, the mini beach tote is waterproof and washable. Easily holds all the items needed for a perfect day at the beach or pool.

**Imprinting Options:** 1-Color Direct Print

**Packaging:** Bulk



[CLICK HERE FOR PRICING + MORE INFO](#)



new

## MINI BEACHCOMBER TOTE

BAG516

**Material:** EVA (Ethylene Vinyl Acetate)

**Features:** A beautiful beach or pool bag with cutout holes and a solid base a design, so the bag will not topple over. Made from EVA, a durable rubber-like material, the mini beach tote is waterproof and washable. Easily holds all the items needed for a perfect day at the beach or pool.

**Imprinting Options:** 1-Color Direct Print

**Packaging:** Bulk



[CLICK HERE FOR PRICING + MORE INFO](#)



new

## CUSTOM PVC BAG CHARMS

CHARM201 - SMALL (1.2" x 1.2")

CHARM202 - MEDIUM (1.2" x 1.2")

CHARM203 - LARGE (1.2" x 1.2")

**Material:** EVA (Ethylene Vinyl Acetate)

**Features:** High-quality rubber accessories, used for handbags and beach bags, made of safe PVC material, light and durable, colorfast, super cute.



[CLICK HERE FOR PRICING + MORE INFO](#)



\*Pricing subject to change due to ongoing uncertainty regarding overseas tariffs. Please refer to website for the latest pricing.

OUR FULL LINE AT [TEKWELD.COM](http://TEKWELD.COM) | ASI: 90807 | SAGE: 67569 | PPAI: 266346

new

## BEACH TOTE BAG519

**Material:** EVA (Ethylene Vinyl Acetate)

**Features:** A beautiful beach or pool bag with solid base a design, so the bag will not topple over. Made from EVA, a durable rubber-like material, the mini beach tote is waterproof and washable. Easily holds all the items needed for a perfect day at the beach or pool.

**Imprinting Options:** 1-Color Direct Print

**Packaging:** Bulk



[CLICK HERE FOR PRICING + MORE INFO](#)



new

## BEACHCOMBER TOTE BAG517

**Material:** EVA (Ethylene Vinyl Acetate)

**Features:** A beautiful beach or pool bag with solid base a design, so the bag will not topple over. Made from EVA, a durable rubber-like material, the mini beach tote is waterproof and washable. Easily holds all the items needed for a perfect day at the beach or pool.

**Imprinting Options:** 1-Color Direct Print

**Packaging:** Bulk



[CLICK HERE FOR PRICING + MORE INFO](#)







## EVERYWHERE BELT BAG / FANNY PACK BAG501

**Material:** Nylon

**Features:** When on the go, reach for this incredibly convenient Everywhere Belt Bag. This handy accessory includes a zippered main compartment with interior mesh pockets as well as a back zippered pocket. The adjustable strap fits all and allows this Everywhere Bag to be worn as a fanny pack or a cross-body bag. Features a direct print front and center on the bag for maximum brand visibility. 100% nylon with a 210D polyester lining.

**Imprinting Options:** Direct Print

**Packaging:** Bulk



[CLICK HERE FOR PRICING + MORE INFO](#)



## ROLL UP DUFFLE BAG BAG502

**Material:** 210D Polyester foldable bag with nylon zipper closed and webbing handle

**Features:** The Duffle Roller-Up Bag is a convenient 2.75" diameter by 3.35" tall size that fits in pockets, glove compartments or another bag. When needed, it easily unrolls and expands to a 26" x 15.75" duffle bag with a nylon zipper and webbing handle. Beyond the amazing convenience, this bag is sublimated in full color to proudly display your brand message, is made of durable waterproof polyester and will be used time and time again.

**Imprinting Options:** Full Color Process



[CLICK HERE FOR PRICING + MORE INFO](#)



\*Pricing subject to change due to ongoing uncertainty regarding overseas tariffs. Please refer to website for the latest pricing.

OUR FULL LINE AT [TEKWELD.COM](http://TEKWELD.COM) | ASI: 90807 | SAGE: 67569 | PPAI: 266346



\*Pricing subject to change due to ongoing uncertainty regarding overseas tariffs. Please refer to website for the latest pricing.  
OUR FULL LINE AT [TEKWELD.COM](http://TEKWELD.COM) | ASI: 90807 | SAGE: 67569 | PPAI: 266346



# BACKPACKS

BASIC COMMUTER STYLE + DELUXE OFFICE STYLE



\*Pricing subject to change due to ongoing uncertainty regarding overseas tariffs. Please refer to website for the latest pricing.  
OUR FULL LINE AT [TEKWELD.COM](http://TEKWELD.COM) | ASI: 90807 | SAGE: 67569 | PPAI: 266346





## COMMUTER BACKPACK BAG511

**Material:** 600D Oxford with 210D polyester lining

**Features:** 2 zippered front pockets, a mesh water bottle pocket and a zippered, large main compartment with a padded sleeve to protect your tech devices. Features a comfortable webbed handle, adjustable shoulder straps and an embroidered logo imprint plus optional decoration on the inside lining of the front pockets.

**Imprinting Options:** Embroidery, Custom Zipper Pull, Imprint Inside Lining

**Packaging:** Bulk



[CLICK HERE FOR PRICING + MORE INFO](#)



## ELITE BACKPACK BAG510

**Material:** EVA 1680D  
Waterproof Nylon with lining

**Features:** Main compartment with zipper closure, 2 zippered front pockets and 2 side pockets. Made from water-resistant, durable basketweave nylon, the backpack is built for daily use. The adjustable strap assures a comfortable experience.

**Imprinting Options:** Debossed  
(One Location)

**Packaging:** Bulk



[CLICK HERE FOR PRICING + MORE INFO](#)

\*Pricing subject to change due to ongoing uncertainty regarding overseas tariffs. Please refer to website for the latest pricing.

OUR FULL LINE AT [TEKWELD.COM](http://TEKWELD.COM) | ASI: 90807 | SAGE: 67569 | PPAI: 266346



# STICKERS

VINYL DIE CUT STICKERS + GLITTER / HOLOGRAPHIC STICKERS



## STICKER ROLLS

2" X 1" #STCKR200	4" X 2" #STCKR400	5" X 4" #STCKR502
2" X 2" #STCKR201	4" X 4" #STCKR401	5" X 5" #STCKR503
3" X 2" #STCKR300	5" X 2" #STCKR500	6" X 2" #STCKR600
3" X 3" #STCKR301	5" X 3" #STCKR501	6" X 4" #STCKR601



\*Pricing subject to change due to ongoing uncertainty regarding overseas tariffs. Please refer to website for the latest pricing.

OUR FULL LINE AT [TEKWELD.COM](http://TEKWELD.COM) | ASI: 90807 | SAGE: 67569 | PPAI: 266346



REGULAR	GLITTER	HOLOGRAPHIC
4" X 6" #STCKS46	3" X 5" #STCKSG35	#STCKSH35
6" X 9" #STCKS69	4" X 6" #STCKSG46	#STCKSH46
	6" X 9" #STCKSG69	#STCKSH69
	7" X 11" #STCKSG711	#STCKSH711



REGULAR	GLITTER	HOLOGRAPHIC
2" X 2" #STCK22	#STCKG22	#STCKH22
3" X 3" #STCK33	#STCKG33	#STCKH33
4" X 4" #STCK44	#STCKG44	#STCKH44
5" X 5" #STCK55	#STCKG55	#STCKH55
3" X 2" #STCK32	#STCKG32	#STCKH32
5" X 4" #STCK54	#STCKG54	#STCKH54



REGULAR	GLITTER	HOLOGRAPHIC
2" X 2" #STCK22T	#STCKG22T	#STCKH22T
3" X 3" #STCK33T	#STCKG33T	#STCKH33T
4" X 4" #STCK44T	#STCKG44T	#STCKH44T
5" X 5" #STCK55T	#STCKG55T	#STCKH55T
3" X 2" #STCK32T	#STCKG32T	#STCKH32T
5" X 4" #STCK54T	#STCKG54T	#STCKH54T



REGULAR	TAB
7.5" X 3.75" #STCKBP73	7.5" X 3.75" #STCKBP73T
11.5" X 3" #STCKBP113	11.5" X 3" #STCKBP113T
15" X 3.75" #STCKBP153	15" X 3.75" #STCKBP153T

35



# TUMBLERS + BOTTLES

STAINLESS STEEL + DOUBLE WALLED VACUUM SEALED



\*Pricing subject to change due to ongoing uncertainty regarding overseas tariffs. Please refer to website for the latest pricing.  
OUR FULL LINE AT [TEKWELD.COM](https://www.tekweld.com) | ASI: 90807 | SAGE: 67569 | PPAI: 266346



## 20 OZ. TUMBLER

BTL102

**Material:** Stainless Steel with Plastic Lid

**Features:** Double wall insulation. Spill-resistant slide action lid with rubber gasket. Keeps drinks hot or cold for up to 6 hours. BPA free and meets FDA requirements.

**Imprinting Options:** Direct Print, 1 or 2 color

**Packaging:** Individually polybagged, full color E-flute box with or without window

**Colors:** Black, Blue, Red, Copper, Silver, Titanium Grey, White



[CLICK HERE FOR PRICING + MORE INFO](#)



BTL102-BX3  
DRINKWARE WITH DOUBLE BOX



BTL200-BXE  
DRINKWARE WITH GIFT BOX

## 20 OZ. ECONOMY TUMBLER

BTL200

**Material:** Stainless Steel with Plastic Lining and Lid

**Features:** Double wall insulation. Spill-resistant slide action lid with rubber gasket. Non-skid rubber bottom. Keeps drinks hot or cold for up to 4 hours. BPA free and meets FDA requirements.

**Imprinting Options:** Direct Print, 1 or 2 color

**Packaging:** Full color E-flute box with or without window

**Colors:** Black, Blue, Red, Silver, Titanium Grey, White



[CLICK HERE FOR PRICING + MORE INFO](#)



\*Pricing subject to change due to ongoing uncertainty regarding overseas tariffs. Please refer to website for the latest pricing.

OUR FULL LINE AT [TEKWELD.COM](http://TEKWELD.COM) | ASI: 90807 | SAGE: 67569 | PPAI: 266346





BT101-BXE  
DRINKWARE WITH GIFT BOX

## 20 OZ. CONTOURED TUMBLER BT101

**Material:** Stainless Steel with Plastic Lid

**Features:** Double wall insulation. Spill-resistant slide action lid with rubber gasket. Keeps drinks hot or cold for up to 6 hours. BPA free and meets FDA requirements.

**Imprinting Options:** Direct Print, 1 or 2 color

**Packaging:** Individually polybagged, full color E-flute box with or without window

**Colors:** Black, Blue, Red, Silver, Titanium Grey, White



[CLICK HERE FOR PRICING + MORE INFO](#)



## 20 OZ. ECONOMY TUMBLER BT201

**Material:** Stainless Steel with Plastic Lining and Lid

**Features:** Double wall insulation. Spill-resistant slide action lid with rubber gasket. Non-skid rubber bottom. Keeps drinks hot or cold for up to 4 hours. BPA free and meets FDA requirements.

**Imprinting Options:** Direct Print, 1 or 2 color

**Packaging:** Individually polybagged, full color E-flute box with or without window



[CLICK HERE FOR PRICING + MORE INFO](#)



BT201-BXE  
DRINKWARE WITH GIFT BOX

\*Pricing subject to change due to ongoing uncertainty regarding overseas tariffs. Please refer to website for the latest pricing.

OUR FULL LINE AT [TEKWELD.COM](http://TEKWELD.COM) | ASI: 90807 | SAGE: 67569 | PPAI: 266346

## 20 OZ. TUMBLER

BTL122

**Material:** Stainless Steel with Ceramic Inner Finish with a Plastic Lid

**Features:** Double wall, vacuum insulation. Plastic lid. Ceramic lining improves taste.

**Imprinting Options:** Direct Print, 1 or 2 color

**Packaging:** Individual polybag

**Colors:** Blue, Red



[CLICK HERE FOR PRICING + MORE INFO](#)



## 30 OZ. CONTOURED TUMBLER

BTL103

**Material:** Stainless Steel with Plastic Lid

**Features:** Double wall insulation. Spill-resistant slide action lid with rubber gasket. Keeps drinks hot or cold for up to 6 hours. BPA free and meets FDA requirements.

**Imprinting Options:** Direct Print, 1 or 2 color

**Packaging:** Individually polybagged, full color E-flute box with or without window

**Colors:** Black, Blue, Red, Silver



[CLICK HERE FOR PRICING + MORE INFO](#)



BTL103-BX2  
DRINKWARE WITH WINDOW BOX

\*Pricing subject to change due to ongoing uncertainty regarding overseas tariffs. Please refer to website for the latest pricing.  
OUR FULL LINE AT [TEKWELD.COM](http://TEKWELD.COM) | ASI: 90807 | SAGE: 67569 | PPAI: 266346





## 14 OZ. WHITE TWISTING TUMBLER BTL110

**Material:** Pro-grade stainless steel

**Features:** Stainless steel tumbler features a twisted body for a sharp, sleek look. Plastic lined.

**Imprinting Options:** Direct Print

**Colors:** Blue, Clear, Green, Red, Smoke



[CLICK HERE FOR PRICING + MORE INFO](#)



## 14 OZ. BLACK TWISTING TUMBLER BTL111

**Material:** Pro-grade stainless steel

**Features:** Stainless steel tumbler features a twisted body for a sharp, sleek look. Plastic lined.

**Imprinting Options:** Direct Print

**Colors:** Blue, Clear, Green, Red, Smoke



[CLICK HERE FOR PRICING + MORE INFO](#)



\*Pricing subject to change due to ongoing uncertainty regarding overseas tariffs. Please refer to website for the latest pricing.

OUR FULL LINE AT [TEKWELD.COM](http://TEKWELD.COM) | ASI: 90807 | SAGE: 67569 | PPAI: 266346

## 17 OZ. COLA BOTTLE

BTL100

**Material:** Stainless Steel

**Features:** Double wall, vacuum insulation keeps drinks hot for 12 hours or cold for 48 hours. Tight screw-on cap provides an airtight seal.

**Imprinting Options:** Direct Print, 1 or 2 color

**Packaging:** Individual polybag, full color E-flute box with or without window, shipping tube

**Colors:** Black, Blue, Red, Silver, Copper, Titanium Grey, White, Wood Tone



[CLICK HERE FOR PRICING + MORE INFO](#)



BTL100-BXE  
DRINKWARE WITH GIFT BOX

## 17 OZ. MATTE FINISH BOTTLE

BTL400

**Material:** Stainless Steel with Copper Lining

**Features:** Double wall, vacuum insulation keeps drinks hot for 12 hours or cold for 48 hours. Tight screw-on cap provides an airtight seal.

**Imprinting Options:** Direct Print, 1 or 2 color

**Packaging:** Individual polybag, full color E-flute box with or without window, shipping tube

**Colors:** Black, Blue, Copper, Green, Red, Silver, Titanium Grey, and White



[CLICK HERE FOR PRICING + MORE INFO](#)



BTL400-BXE  
DRINKWARE WITH GIFT BOX



\*Pricing subject to change due to ongoing uncertainty regarding overseas tariffs. Please refer to website for the latest pricing.

OUR FULL LINE AT [TEKWELD.COM](http://TEKWELD.COM) | ASI: 90807 | SAGE: 67569 | PPAI: 266346





## 20 OZ. CAMPING MUG WITH POWDER-COAT TEXTURE FINISH BTL610

**Material:** Stainless Steel with Plastic Lid

**Features:** Double wall, vacuum insulation keeps drinks hot for 12 hours or cold for 24 hours. Push-in lid with slide opening. Powder coated finish. BPA free and FDA compliant.

**Imprinting Options:** Direct Print, Full Color, Laser Engrave

**Colors:** Black, Blue, Grey, Red, White



[CLICK HERE FOR PRICING + MORE INFO](#)



FOB **CITY OF INDUSTRY, CA 91789**

## 20 OZ. CONTOURED TRAVEL MUG BTL125

**Material:** Stainless Steel with a Plastic Lid

**Features:** Double wall insulation. Contoured design to fit in cup holders. Metal handle. Plastic slide-action lid with rubber gasket to prevent mishaps. BPA free and meets FDA requirements.

**Imprinting Options:** Direct Print, 1 or 2 color

**Colors:** Black, Blue, Red and White



[CLICK HERE FOR PRICING + MORE INFO](#)



\*Pricing subject to change due to ongoing uncertainty regarding overseas tariffs. Please refer to website for the latest pricing.

OUR FULL LINE AT [TEKWELD.COM](http://TEKWELD.COM) | ASI: 90807 | SAGE: 67569 | PPAI: 266346

## 12 OZ. SLIM MUG

BTL123

**Material:** Stainless Steel with a Plastic Lid

**Features:** Double wall, vacuum insulation. Push-on clear lid with a drink-through opening. Comfortable handle.

**Imprinting Options:** Direct Print, 1 or 2 color

**Colors:** Black, Navy, Red, Teal and White



[CLICK HERE FOR PRICING + MORE INFO](#)



## 10 OZ. STEMLESS WINE GLASS

BTL106

**Material:** Stainless Steel with Plastic Lid

**Features:** Double wall insulation. Plastic lid with rubber gasket for a tight seal. BPA free and meets FDA requirements.

**Imprinting Options:** Direct Print, 1 or 2 color

**Packaging:** Full color E-flute box

**Colors:** Matte Black, Blue, Red, Silver, Titanium Grey, White



[CLICK HERE FOR PRICING + MORE INFO](#)



BTL106-BXE  
DRINKWARE WITH GIFT BOX







## 14 OZ. STEMLESS CHAMPAGNE FLUTE

BTL401

**Material:** Stainless Steel with rubberized finish

**Features:** Double wall insulation with a rubberized finish. Plastic lid with rubber gasket for a tight seal. BPA free and meets FDA requirements.

**Imprinting Options:** Direct Print, 1 or 2 color

**Colors:** Black, Blue, Gray, Lime Green, Red, Teal & White



[CLICK HERE FOR PRICING + MORE INFO](#)



## 12 OZ. STEMLESS WINE GLASS

BTL406

**Material:** Stainless Steel with rubberized finish

**Features:** Double wall insulation with a rubberized finish. Plastic lid with rubber gasket for a tight seal. BPA free and meets FDA requirements.

**Imprinting Options:** Direct Print, 1 or 2 color

**Packaging:** Individual polybag, Full color E-flute box

**Colors:** Black, Blue, Grey, Lime, Teal, White



[CLICK HERE FOR PRICING + MORE INFO](#)



BTL406-BXE  
DRINKWARE WITH GIFT BOX

\*Pricing subject to change due to ongoing uncertainty regarding overseas tariffs. Please refer to website for the latest pricing.

OUR FULL LINE AT [TEKWELD.COM](http://TEKWELD.COM) | ASI: 90807 | SAGE: 67569 | PPAI: 266346

## 10 OZ. WOOD TONE STEMLESS WINE GLASS

BTL500

**Material:** Stainless Steel with Plastic Lid

**Features:** Double wall insulation. Beautiful wood tone. Plastic lid with rubber gasket for a tight seal. BPA free and meets FDA requirements.

**Imprinting Options:** Direct Print, 1 or 2 color

**Packaging:** Individual polybag



[CLICK HERE FOR PRICING + MORE INFO](#)



## 20 OZ. CONTOURED WOOD TONE TUMBLER

BTL501

**Material:** Stainless Steel with Copper Lining and Plastic Lid

**Features:** Double wall, vacuum insulation. Beautiful wood tone. Plastic lid. Spill-resistant slide action lid with rubber gasket. Contoured design to fit in cup holders. Keeps drinks hot or cold up to 6 hours. BPA free and meets FDA requirements.

**Imprinting Options:** Direct Print, 1 or 2 color

**Packaging:** Individual polybag



[CLICK HERE FOR PRICING + MORE INFO](#)





## **DIGITEK +** **FULL COLOR WRAP DRINKWARE**

Our new digital printing technology provides dynamic full color printing on drinkware. The perfect solution if you need to print complex multi-color logos, photos or artwork. Large full-wrap imprint. You can even personalize each individual bottle with a different name, for an additional run charge, as long as you use the same base artwork.

Great for sports teams, business groups, wedding parties, special events and non-profits looking for consistent full color artwork, photos or branding.

\*Pricing subject to change due to ongoing uncertainty regarding overseas tariffs. Please refer to website for the latest pricing.  
OUR FULL LINE AT [TEKWELD.COM](http://TEKWELD.COM) | ASI: 90807 | SAGE: 67569 | PPAI: 266346

## 20 OZ. METALLIC FINISH BOTTLE WITH BAMBOO LID

BTL126

**Material:** Stainless Steel with Bamboo Lid and Copper Lining

**Features:** Double wall, vacuum insulated.  
Spill-resistant screw-on cap.  
BPA free and meets FDA requirements

**Imprinting Options:** Direct Print, 1 or 2 color, Full Color

**Colors:** Black, Blue, Red, White



[CLICK HERE FOR PRICING + MORE INFO](#)



## 12 OZ. WINE TUMBLER

BTL625

**Material:** Stainless Steel, Polypropylene

**Features:** Matte Finish. Double wall insulation. Spill-resistant slide action lid with rubber gasket. Keeps drinks hot or cold for up to 6 hours. BPA free and meets FDA requirements.

**Imprinting Options:** Direct Print, Full Color (Digitek+)

**Colors:** White, Navy, Red, Black, Aqua



[CLICK HERE FOR PRICING + MORE INFO](#)







## 12 OZ. DOUBLE WALL CERAMIC TUMBLER BTL637

**Material:** Ceramic Stoneware

**Features:** Double wall, vacuum insulation. Plastic lid. Ceramic lining improves taste.

**Imprinting Options:** Direct Print, Full Color (Digitek+)

**Packaging:** Individual Gift Box

**Colors:** Black, White (Grey Base)



[CLICK HERE FOR PRICING + MORE INFO](#)



## 20 OZ. STAINLESS STEEL TUMBLER WITH SILICONE STRAW BTL634

**Material:** Stainless Steel with Ceramic Inner Finish with a Plastic Lid

**Features:** 20 oz double-walled stainless steel tumbler comes with a stainless steel straw with a food grade silicone comfort tip. It can handle both hot and cold liquids. Keep your drink hot for 12 hours and cold for up to 24 hours.

**Imprinting Options:** Direct Print, Full Color (Digitek+)

**Packaging:** Individual Gift Box

**Colors:** Black, Red, Gray, Blue White



[CLICK HERE FOR PRICING + MORE INFO](#)



\*Pricing subject to change due to ongoing uncertainty regarding overseas tariffs. Please refer to website for the latest pricing.

OUR FULL LINE AT [TEKWELD.COM](http://TEKWELD.COM) | ASI: 90807 | SAGE: 67569 | PPAI: 266346

new

## 22 OZ. TUMBLER WITH CORK BOTTOM

BTL627

**Material:** Stainless Steel, Polypropylene, Silicone

**Features:** Powder coated stainless steel 22 oz double wall tumbler with a cork bottom. The cup's built-in cork bottom serves as a coaster and prevents the cup from sliding around on smooth surfaces. Keep drinks hot for up to 8 hours and cold for up to 12 hours.

**Imprinting Options:** Direct Print, Full Color (Digitex+)

**Colors:** Black, Grey, Navy, White



[CLICK HERE FOR PRICING + MORE INFO](#)



new

## 27 OZ. STAINLESS STEEL WATER BOTTLE WITH SILICONE BOTTOM SLEEVE

BTL631

**Material:** Powder Coated Stainless Steel, Copper Lining, Plastic and Silicone

**Features:** Double wall vacuum insulation for maximum temperature retention. The large mouth makes it easy to add ice cubes or citrus slices, portable handles make it easy to carry with you wherever you go, leak proof lid design ensures nothing gets on your bag or clothes. The non-slip silicone bottom sleeve helps keep the bottom of your bottle from getting dents, dings, scratches, and other flaws.

**Imprinting Options:** Direct Print, Full Color (Digitex+)

**Colors:** Blue, Black, White



[CLICK HERE FOR PRICING + MORE INFO](#)



\*Pricing subject to change due to ongoing uncertainty regarding overseas tariffs. Please refer to website for the latest pricing.

OUR FULL LINE AT [TEKWELD.COM](http://TEKWELD.COM) | ASI: 90807 | SAGE: 67569 | PPAI: 266346





new

## 16 OZ. TUMBLER WITH STRAW

BTL624

**Material:** Stainless Steel, Polypropylene, Silicone

**Features:** This 16 oz stainless steel tumbler has a plastic liner as well as a stainless steel straw with a food grade silicone comfort tip. It can handle both hot and cold liquids. This product is free of BPA, phthalates, lead, and toxins. These are made of FDA-approved food-grade stainless steel and silicone and comply with California Proposition 65.

**Imprinting Options:** Direct Print, Full Color (Digitex+)

**Packaging:** Individual Gift Box

**Colors:** Aqua, Black, Red, Green, White



[CLICK HERE FOR PRICING + MORE INFO](#)



new

## 20 OZ. WIDE MOUTH STAINLESS STEEL WATER BOTTLE

BTL633

**Material:** Powder Coated Stainless Steel, Copper Lining and Plastic

**Features:** Double wall vacuum insulation for maximum temperature retention. The large mouth makes it easy to add ice cubes or citrus slices. This item does not contain any BPA, phthalates, lead, or other harmful chemicals. Constructed of food-grade materials that have been FDA-approved and passed California Proposition 65.

**Imprinting Options:** Direct Print, Full Color (Digitex+)

**Colors:** Black, Gray, Navy, Sea Foam, White



[CLICK HERE FOR PRICING + MORE INFO](#)



\*Pricing subject to change due to ongoing uncertainty regarding overseas tariffs. Please refer to website for the latest pricing.

OUR FULL LINE AT [TEKWELD.COM](http://TEKWELD.COM) | ASI: 90807 | SAGE: 67569 | PPAI: 266346



## 34 OZ. STAINLESS STEEL WATER BOTTLE

BTL632

**Material:** Powder Coated Stainless Steel, Copper Lining and Plastic

**Features:** Double wall vacuum insulation for maximum temperature retention. The large mouth makes it easy to add ice cubes or citrus slices. This item does not contain any BPA, phthalates, lead, or other harmful chemicals. Constructed of food-grade materials that have been FDA-approved and passed California Proposition 65.

**Imprinting Options:** Direct Print, Full Color (Digitek+)

**Colors:** Black, White



[CLICK HERE FOR PRICING + MORE INFO](#)



## 36 OZ. DOUBLE WALL STAINLESS STEEL WATER BOTTLE WITH CARRYING HANDLE

BTL129

**Material:** Stainless Steel & Copper. Powder Coasting Finish

**Features:** Double wall vacuum insulation for maximum temperature retention. The angled, durable carry handle is ready for a nice hike, day of fishing or the beach. The screw-on lid securely stays in place and the stainless steel double wall construction and copper lining maintains the temperature of your beverage. Also note the beautiful powder coated finish. Free of BPA, phthalates, lead and toxins. FDA approved food grade stainless steel.

**Imprinting Options:** Direct Print, Full Color (Digitek+)

**Packaging:** Individual Gift Box

**Colors:** Black, White



[CLICK HERE FOR PRICING + MORE INFO](#)







\*Pricing subject to change due to ongoing uncertainty regarding overseas tariffs. Please refer to website for the latest pricing.  
OUR FULL LINE AT [TEKWELD.COM](http://TEKWELD.COM) | ASI: 90807 | SAGE: 67569 | PPAI: 266346

new

## 20 OZ. SLIM RUBBERIZED TUMBLER WITH SPILL REDUCTION STRAW

BTL134

**Material:** Stainless Steel with PP Lid and PP & Silicone Straw

**Features:** Double wall, vacuum sealed stainless steel insulation. spill reduction straw and comfortable rubberized finish

**Imprinting Options:** Direct Print, Full Color Wrap

**Colors:** Black, Blue, Red, White



[CLICK HERE FOR PRICING + MORE INFO](#)



Fits all sizes  
Hot or Cold!

new

## 30 OZ VERSA CUP

BTL135

**Material:** Stainless Steel, Copper Lined

**Features:** Double wall, vacuum insulation. Includes rubber gasket lid that fits over the top to easily hold small to extra large, 16-24 oz disposable plastic or Styrofoam cups of hot or iced coffee.

**Imprinting Options:** Direct Print, Full Color Wrap

**Packaging:** Individual Gift Box

**Colors:** Blue, Gray, Red, White



[CLICK HERE FOR PRICING + MORE INFO](#)





# MUGS

ENAMEL + CERAMIC MUGS



\*Pricing subject to change due to ongoing uncertainty regarding overseas tariffs. Please refer to website for the latest pricing.  
OUR FULL LINE AT [TEKWELD.COM](https://www.tekweld.com) | ASI: 90807 | SAGE: 67569 | PPAI: 266346

new

## 16 OZ. ENAMEL CAMPING MUG WITH SPECKLED MATTE FINISH BTL626

**Material:** Enamel with Stainless Steel Rim

**Features:** Speckled finish enamel with stainless steel Rim. BPA free and meets FDA requirements

**Imprinting Options:** Direct Print, 1 or 2 color

**Packaging:** Bubble Bag and White Box

**Colors:** Black, Blue, Green, Red, White



[CLICK HERE FOR PRICING + MORE INFO](#)



FOB CITY OF INDUSTRY, CA 91789



new

## 22 OZ. MATTE FINISH ENAMEL CAMPING MUG BTL132

**Material:** Enamel with Stainless Steel Rim

**Features:** Speckled finish enamel with stainless steel Rim. BPA free and meets FDA requirements

**Imprinting Options:** Direct Print, 1 color

**Colors:** Black, Blue, Green, Red, White, Gray



[CLICK HERE FOR PRICING + MORE INFO](#)







## 16 OZ. ENAMEL CAMPING MUG WITH GLOSS FINISH BTL117

**Material:** Stainless Steel with Enamel Exterior Coating

**Features:** Speckled mug with a comfortable handle. Vibrant colors. Not insulated to keep hands warm on chilly days.

**Imprinting Options:** Direct Print, 1 or 2 color

**Colors:** Black, Blue, Navy, Teal, White, Green, Red



[CLICK HERE FOR PRICING + MORE INFO](#)



FOB **CITY OF INDUSTRY, CA 91789**

## 15 OZ. CERAMIC CAMPING MUG WITH GLOSS FINISH BTL602

**Material:** Ceramic

**Features:** Speckled campfire mug. Convenient handle. Compatible with most single serve coffee machines. BPA free and FDA compliant.

**Imprinting Options:** Direct Print, 1 or 2 color

**Colors:** Black, Blue, Orange, Red, White



[CLICK HERE FOR PRICING + MORE INFO](#)



FOB **CITY OF INDUSTRY, CA 91789**



\*Pricing subject to change due to ongoing uncertainty regarding overseas tariffs. Please refer to website for the latest pricing.

OUR FULL LINE AT [TEKWELD.COM](http://TEKWELD.COM) | ASI: 90807 | SAGE: 67569 | PPAI: 266346

## 16 OZ. CERAMIC MUG

BTL636

**Material:** Ceramic Stoneware

**Features:** Sleek mug with taper bottom,  
High curved grip for easy grab-n-go handling

**Imprinting Options:** Direct Print, 1 or 2 color

**Packaging:** 36 pcs safe carton  
(12 pcs inner carton / bubble wrapped)

**Colors:** Black, Gray, Blue, White



[CLICK HERE FOR PRICING + MORE INFO](#)



FOB **CITY OF INDUSTRY, CA 91789**



## 15 OZ. TWO-TONE CERAMIC MUG

BTL608

**Material:** Ceramic

**Features:** Black glazed top with a speckled  
base. Comfortable handle. BPA free and  
FDA compliant.

**Imprinting Options:** Direct Print

**Colors:** Black/Blue, Black/Grey



[CLICK HERE FOR PRICING + MORE INFO](#)



FOB **CITY OF INDUSTRY, CA 91789**



# BLANKETS

FLEECE + FAUX FUR + SHERPA



\*Pricing subject to change due to ongoing uncertainty regarding overseas tariffs. Please refer to website for the latest pricing.  
OUR FULL LINE AT [TEKWELD.COM](https://www.tekweld.com) | ASI: 90807 | SAGE: 67569 | PPAI: 266346



## PROMO FLEECE BLANKET

FB100

**Material:** 100% Polyester

**Features:** Matching trim whip stitch with customized embroidery options. Measures 50" x 60".

**Imprinting Options:** Embroidery

**Colors:** Black, Burgundy, Cream, Cinder (Gray), Forest Green, Navy, Purple, Red, Royal Blue and Yellow



[CLICK HERE FOR PRICING + MORE INFO](#)



## POLAR FLEECE BLANKET

FB101

**Material:** 100% Polyester Brushed Polar Fleece

**Features:** Ultra Soft Plush. Self Hem Top Stitch Finish. Hypoallergenic. Measures 50" x 60".

**Imprinting Options:** Embroidery

**Packaging:** Vinyl Zippered Pouch with Card

**Colors:** Black, Burgundy, Camel (Tan), Cocoa (Brown), Cream, Forest Green, Navy, Orange, Pink, Purple, Red, Royal Blue, and Yellow



[CLICK HERE FOR PRICING + MORE INFO](#)





## CORAL FLEECE BLANKET

FB102

**Material:** 100% polyester fleece

**Features:** Tricot binding and anti-pill finish. Custom embroidery options. Measures 50" x 60".

**Imprinting Options:** Embroidery

**Packaging:** Vinyl Zippered Bag



[CLICK HERE FOR PRICING + MORE INFO](#)



## FROSTED SHERPA BLANKET

FB117

**Material:** 100% Polyester Fleece

**Features:** Tricot binding and anti-pill finish. Custom embroidery options. Measures 50" x 60".

**Imprinting Options:** Embroidery



[CLICK HERE FOR PRICING + MORE INFO](#)

\*Pricing subject to change due to ongoing uncertainty regarding overseas tariffs. Please refer to website for the latest pricing.

OUR FULL LINE AT [TEKWELD.COM](http://TEKWELD.COM) | ASI: 90807 | SAGE: 67569 | PPAI: 266346

## PROMO FLEECE BLANKET WITH 17 OZ. COLA BOTTLE DRINKWARE COMBO SET FB1-BTL100

**Features:** Fleece Blanket and Stainless Steel Water Bottle combo kit with a postcard.

**Imprinting Options:** Embroidery on blanket, 1 or 2-color direct imprint on bottle, full color postcard

**Packaging:** Vinyl Bag

*For Bottle Colors Refer to BTL100 on Page 35  
For Blanket Colors Refer to FB100 on Page 51*



[CLICK HERE FOR PRICING + MORE INFO](#)



## PROMO FLEECE BLANKET WITH 20 OZ. TUMBLER DRINKWARE COMBO SET FB1-BTL200

**Features:** Fleece Blanket and Stainless Steel Tumbler combo kit with a postcard.

**Imprinting Options:** Embroidery on blanket, 1 or 2-color direct imprint on tumbler, full color postcard

**Packaging:** Vinyl Bag

*For Bottle Colors Refer to BTL200 on Page 31  
For Blanket Colors Refer to FB100 on Page 51*



[CLICK HERE FOR PRICING + MORE INFO](#)



### STOCK POSTCARD DESIGNS:



Postcard 2



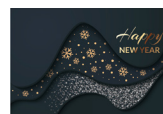
Postcard 3



Postcard 4



Postcard 14



Postcard 17



Postcard 7

\*Pricing subject to change due to ongoing uncertainty regarding overseas tariffs. Please refer to website for the latest pricing.  
OUR FULL LINE AT [TEKWELD.COM](http://TEKWELD.COM) | ASI: 90807 | SAGE: 67569 | PPAI: 266346



## PROMO FLEECE BLANKET WITH 20 OZ. TUMBLER DRINKWARE COMBO SET FBI-BTL201

**Features:** Fleece Blanket and Stainless Steel Tumbler combo kit with a postcard.

**Imprinting Options:** Embroidery on blanket, 1 or 2-color direct imprint on tumbler, full color postcard

**Packaging:** Vinyl Bag

*For Bottle Colors Refer to BTL201 on Page 32  
For Blanket Colors Refer to FB100 on Page 51*



[CLICK HERE FOR PRICING + MORE INFO](#)



## MINK TOUCH LUXURY BLANKET MFB101

**Material:** 100% polyester

**Features:** Ultra Soft Plush. Self Hem Top Stitch Finish. Hypoallergenic. Measures 50" x 60".

**Imprinting Options:** Embroidery

**Packaging:** Vinyl Zippered Bag

**Colors:** Black, Burgundy, Cream, Forest Green, Gray, Navy, Plum, Red and Royal Blue



[CLICK HERE FOR PRICING + MORE INFO](#)



\*Pricing subject to change due to ongoing uncertainty regarding overseas tariffs. Please refer to website for the latest pricing.

OUR FULL LINE AT [TEKWELD.COM](http://TEKWELD.COM) | ASI: 90807 | SAGE: 67569 | PPAI: 266346

## MINK SHERPA BLANKET

MSB101

**Material:** Polyester and Sherpa

**Features:** One side is faux micro mink and the other is soft lamb wool Sherpa. Anti-pill finish with concealed zipper hem. Measures 50" x 60".

**Imprinting Options:** Embroidery

**Packaging:** Vinyl Zippered Bag

**Colors:** Black, Burgundy, Camel, Chocolate (brown), Cream, Forest Green, Gray, Gray Buff, Navy, Plumb, Red, Red Buff, Royal Blue, and Sienna  
**Plaid:** Royal Blue Buffalo, Gray/Cream Buffalo, Gray/Black Buffalo and Red Buffalo



[CLICK HERE FOR PRICING + MORE INFO](#)



## OVERSIZE MINK SHERPA BLANKET

MSB102

**Material:** Polyester and Sherpa

**Features:** One side is faux micro mink and the other is soft lamb wool Sherpa. Anti-pill finish with concealed zipper hem. Measures 60" x 70".

**Imprinting Options:** Embroidery

**Packaging:** Vinyl Zippered Bag

**Colors:** Black, Camel, Chocolate(brown), Gray, Navy, Red and Royal Blue



[CLICK HERE FOR PRICING + MORE INFO](#)



\*Pricing subject to change due to ongoing uncertainty regarding overseas tariffs. Please refer to website for the latest pricing.

OUR FULL LINE AT [TEKWELD.COM](http://TEKWELD.COM) | ASI: 90807 | SAGE: 67569 | PPAI: 266346



# GIFT SETS

DIRECT MAILER GIFTS + LUNCHBOX KITS



\*Pricing subject to change due to ongoing uncertainty regarding overseas tariffs. Please refer to website for the latest pricing.  
OUR FULL LINE AT [TEKWELD.COM](http://TEKWELD.COM) | ASI: 90807 | SAGE: 67569 | PPAI: 266346



## HAPPY HOLIDAYS KIT

BXKIT119

**EZ-BOX3** • 13"l x 12.25"w x 4"h EZ-Box

**FB100** • Promo Fleece Blanket

**SG300** • Miami Sunglasses

**PTCSET** • Coasters In Tin

**BTL135** • 30 oz Versa Cup

**CB302** • Metallic Finish Round Lip Balm

**ACR-OR4** • Acrylic Ornament 16 Square Inches

**ACR-PUZ101** • 5.5" x 5.5" Acrylic Jigsaw Puzzle

**Features:** Happy Holidays gift set that will bring a smile to each and every recipient. It's the gift set that will be enjoyed by all, and includes your unique branding on each item. The set includes a blanket, drinkware, holiday ornament, a fun puzzle and more.

### Imprinting Options:

**EZ-BOX3:** Decal

**BTL135:** Full Color or Direct Print

**FB100:** Embroidery

**SG300:** Direct Print

**PTCSET:** Full Color

**CB302:** Full Color or Direct Print

**ACR-OR4:** Full Color

**ACR-PUZ101:** Full Color

### Colors:

**EZ-BOX3:** White

**BTL135:** Black, Blue, Gray, Red and White

**FB100:** Black, Burgundy, Cream, Gray, Forest Green, Navy, Purple, Red, Royal Blue

**SG300:** Royal Blue, Carolina Blue, Green, Navy Blue,

Neon Green, Neon Pink, Orange, Pink, Purple, Red, Teal, White, Yellow

**PTCSET:** Full Color

**CB302:** Metallic Blue, Metallic Gold, Metallic Green,

Metallic Purple, Metallic Red, Metallic Rose Gold and Metallic Silver

**ACR-OR4:** Full Color

**ACR-PUZ201:** Full Color

**Packaging:** EZ Mailer Box



[CLICK HERE FOR PRICING + MORE INFO](#)

\*Pricing subject to change due to ongoing uncertainty regarding overseas tariffs. Please refer to website for the latest pricing.

OUR FULL LINE AT [TEKWELD.COM](http://TEKWELD.COM) | ASI: 90807 | SAGE: 67569 | PPAI: 266346





new

## NEW HIRE KIT

BXKIT103

**EZ-BOX3** • 13"l x 12.25"w x 4"h EZ-Box

**BAG501** • Everywhere Belt Bag / Fanny Pack

**NBK100** • 80 Page Notebook

**TIS600** • 2 Ply Tissue Canister

**ACR-PS201** • Acrylic Phone Stand

**BTL135** • 30 oz Versa Cup

**SG350** • Blue Light Blocking Glass

**TW100** • Silicone Smart Wallet

**MP100** • 6 ½"h x 8"w x 1/8" thick Rectangle Mousepad

**Features:** Make your new employees feel welcome with this thoughtful onboarding kit. Whether it's an in-office, remote or hybrid position, show your new hires how valued and appreciated they are with a collection of useful items featuring your logo. This complete turnkey kit makes ordering easy.

### Imprinting Options:

**EZ-BOX3:** Decal

**BAG501:** Direct Print

**BTL135:** Full Color or Direct Print

**NBK100:** Full Color or Direct Print

**MP100:** Sublimation

**ACR-PS201:** Full Color or Direct Print

**TIS600:** Decal

**SG350:** Direct Print

**TW100:** Direct Print

### Colors:

**EZ-BOX3:** White

**BAG501:** Black, Blue, Gray, Red and White. Buckle: Black

**BTL135:** Black, Blue, Gray, Red and White

**NBK100:** Black, Blue, Green, Red and White

**MP100:** Full Color

**TIS600:** White

**SG350:** Black, Navy Blue, Red, Teal and White

**TW100:** Black, Green, Gray, Navy Blue, Orange, Pink, Purple, Red,

Royal Blue, Teal, White and Yellow

**Packaging:** EZ Mailer Box



[CLICK HERE FOR PRICING + MORE INFO](#)

\*Pricing subject to change due to ongoing uncertainty regarding overseas tariffs. Please refer to website for the latest pricing.

OUR FULL LINE AT [TEKWELD.COM](http://TEKWELD.COM) | ASI: 90807 | SAGE: 67569 | PPAI: 266346



new

## BACK TO SCHOOL KIT

BXKIT102

**BTL107** • 24oz. Tritan Bottle

**BAG102** • 210D Drawstring Backpack

**NBK102** • Spiral Notebook

**SG300** • Miami Sunglasses

**BD101** • Bandage Dispenser

**SG350** • Blue Light Blocking Glass

**EZ-BOX3** • 13"l x 12.25"w x 4"h EZ-Box

**MP100** • 6 1/2"h x 8"w x 1/8" thick Rectangle Mousepad

**Features:** A great kit to exercise minds of all ages! This boxed collection of items keeps people hydrated with a Tritan water bottle, protects eyes with sunglasses, treats scrapes, provides a book to jot down notes, keeps a place in a good book and delivers a beautiful mousepad.

### Imprinting Options:

**BAG102:** Direct Print

**BTL107:** Direct Print

**NBK102:** Direct Print

**SG300:** Direct Print

**MP100:** Sublimation

**BD101:** Decal, Full Color or Direct Print

**PG1000:** Full Color Process

**EZ-BOX3:** Decal

### Colors:

**BAG102:** Black, Forest Green, Gray, Athletic Gold, Light Blue, Lime Green, Maroon, Navy Blue, Orange, Plum Purple, Pink, Purple, Red, Royal Blue

**BTL107:** Black, Blue, Lime, Red, Teal

**NBK102:** Black, Blue, Green, Orange, Purple, Red and White

**SG300:** Black, Royal Blue, Carolina Blue, Green, Navy Blue, Neon Green, Neon Pink, Orange, Pink, Purple, Red, Teal, White, Yellow

**MP100:** Full Color Process

**BD101: Solid:** White **Translucent:** Black, Blue, Frost, Green, Orange, Pink, Purple, Red, Teal

**PG1000:** Full Color Process

**EZ-BOX3:** White

**Packaging:** EZ Mailer Box



[CLICK HERE FOR PRICING + MORE INFO](#)

\*Pricing subject to change due to ongoing uncertainty regarding overseas tariffs. Please refer to website for the latest pricing.

OUR FULL LINE AT [TEKWELD.COM](http://TEKWELD.COM) | ASI: 90807 | SAGE: 67569 | PPAI: 266346





**new**

## ESSENTIALS KIT

**BXKIT107**

**EZ-BOX3** • 13"l x 12.25"w x 4"h EZ-Box

**BAG102** • 210D Drawstring Backpack

**NBK100** • 80 Page Notebook

**SCP201** • All-In-One Cleaning Kit 2

**BTL107** • 24oz. Tritan Bottle

**TW100** • Silicone Smart Wallet

**OPEN102** • Bottle Opener, Corkscrew Opener with Knife

**HS109-CB3** • 2 oz. Tottle Hand Sanitizer With Carabiner + Clip Balm

**Features:** The Essentials Kit is packed with a useful assortment of best-selling, popular items that will be needed anytime of day, from dawn to dusk. This collection is an effective branding vehicle because your brand is there on all these items.

### Imprinting Options:

**BAG102:** Direct Print

**BTL107:** Direct Print

**HS109-CB3: CB103:** Decal

**NBK100:** Digitek or Direct Print

**SCP201:** Decal or Direct Print

**TW100:** Direct Print

**OPEN102:** Direct Print

**EZ-BOX3:** Decal

### Colors:

**BAG102:** Black, Forest Green, Gray, Athletic Gold, Light Blue, Lime Green, Maroon, Navy Blue, Orange, Plum Purple, Pink, Purple, Red, Royal Blue

**BTL107:** Black, Blue, Lime, Red, Teal

**HS109-CB3: HS109:** Clear

Flavors – Apple, Bubble Gum, Cherry, Citrus, Coconut, Mint, Natural/Unflavored, Peach, Passion Fruit, Pomegranate, Raspberry, Spearmint, Strawberry, Vanilla, Vanilla/Watermelon, Watermelon

**NBK100:** Black, Blue, Green, Red, White

**SCP201:** Blue, Clear

**TW100:** Black, Green, Gray, Navy Blue, Orange, Pink, Purple, Red, Royal Blue, Teal, White, Yellow

**OPEN102:** Black, Blue, Red, White

**EZ-BOX3:** White

**Packaging:** EZ Mailer Box



[CLICK HERE FOR PRICING + MORE INFO](#)

\*Pricing subject to change due to ongoing uncertainty regarding overseas tariffs. Please refer to website for the latest pricing.

OUR FULL LINE AT [TEKWELD.COM](http://TEKWELD.COM) | ASI: 90807 | SAGE: 67569 | PPAI: 266346

## LIP BALM ORNAMENT SETS

**KIT300PK2** • 2 Pack of Matte Finish Lip Balms

**KIT300PK4** • 4 Pack of Matte Finish Lip Balms

**KIT302PK2** • 2 Pack of Metallic Finish Lip Balms

**Features:** Vanilla scented lip balm in a round shape with a shiny matte/metallic finish. Optional strap on each lip balm ball.

**Imprinting Options:** 1 or 2 Color Direct Print, or Full Color on Lip Balm; Full Color Decal on PVC Tube

**Packaging:** PVC Tube

**CB300 Colors:** Black, Burgundy, Dark Blue, Dark Green, Green, Pink, Purple, Red, Royal Blue, Sunflower, White, Yellow

**CB302 Colors:** Metallic Blue, Metallic Gold, Metallic Green, Metallic Purple, Metallic Red, Metallic Rose Gold, Metallic Silver



[CLICK HERE FOR PRICING + MORE INFO](#)



## RETRO LUNCHBOX + SINGLE 10 OZ. STEMLESS WINE GLASS

**KIT801**

**Kit Components:** LB101 Retro Lunchbox, BTL106 10 oz. Stemless Wine Glass

**Features:** Single 10 oz. Stainless Steel Double Wall Insulated Stemless Wine Glass with plastic lid nestled in a metal retro lunchbox with a form-fitted insert.

**Imprinting Options:** Direct Print, 1 or 2 color on wine glass, Full Color on Lunchbox

**Lunchbox Colors:** Black, Gold Navy Blue, Red, Royal Blue, Silver, White

**Wine Glass Colors:** Matte Black Blue, Copper, Red, Rose Gold Silver, Titanium Grey



[CLICK HERE FOR PRICING + MORE INFO](#)



\*Pricing subject to change due to ongoing uncertainty regarding overseas tariffs. Please refer to website for the latest pricing.

OUR FULL LINE AT [TEKWELD.COM](http://TEKWELD.COM) | ASI: 90807 | SAGE: 67569 | PPAI: 266346



## RETRO LUNCHBOX + DOUBLE 10 OZ. STEMLESS WINE GLASS KIT803

**Kit Components:** LB101 Retro Lunchbox, Two (2) BTL106 10 oz. Stemless Wine Glasses

**Features:** Two 10 oz. Stainless Steel Double Wall Insulated Stemless Wine Glasses with plastic lids nestled in a metal retro Lunchbox with a form-fitted insert.

**Imprinting Options:** Direct Print, 1 or 2 color on wine glasses, Full Color on Lunchbox

**Lunchbox Colors:** Black, Gold  
Navy Blue, Red, Royal Blue, Silver, White

**Wine Glass Colors:** Matte Black  
Blue, Copper, Red, Rose Gold  
Silver, Titanium Grey



[CLICK HERE FOR PRICING + MORE INFO](#)



## RETRO LUNCHBOX + DOUBLE 10 OZ. STEMLESS WOOD TONE WINE GLASS KIT804

**Kit Components:** LB101 Retro Lunchbox, Two (2) BTL500 10 oz. Wood Tone Stemless Wine Glasses

**Features:** Two 10 oz. Stainless Steel Double Wall Insulated Wood Tone Stemless Wine Glasses with plastic lids nestled in a metal retro Lunchbox with a form-fitted insert.

**Imprinting Options:** Direct Print, 1 or 2 color on wine glasses, Full Color on Lunchbox

**Lunchbox Colors:** Black, Gold  
Navy Blue, Red, Royal Blue, Silver, White



[CLICK HERE FOR PRICING + MORE INFO](#)

\*Pricing subject to change due to ongoing uncertainty regarding overseas tariffs. Please refer to website for the latest pricing.

OUR FULL LINE AT [TEKWELD.COM](http://TEKWELD.COM) | ASI: 90807 | SAGE: 67569 | PPAI: 266346

## RETRO LUNCHBOX + SINGLE 12 OZ. STEMLESS WINE GLASS KIT805

**Kit Components:** LB101 Retro Lunchbox,  
BTL406 12 oz. Stemless Wine Glass with  
Rubberized Finish

**Features:** Single 12 oz. Stainless Steel  
Rubberized Finish Double Wall Insulated  
Stemless Wine Glass with plastic lid nestled  
in a metal retro Lunchbox with a form-fitted  
insert.

**Imprinting Options:** Direct Print, 1 or 2 color  
on wine glass, Full Color on Lunchbox

**Lunchbox Colors:** Black, Gold  
Navy Blue, Red, Royal Blue, Silver, White

**Wine Glass Colors:** Black, Royal Blue, Grey,  
Lime, Teal & White



[CLICK HERE FOR PRICING + MORE INFO](#)



## RETRO LUNCHBOX + DOUBLE 12 OZ. STEMLESS WINE GLASS KIT806

**Kit Components:** LB101 Retro Lunchbox, Two  
(2) BTL406 12 oz. Stemless Wine Glasses  
with Rubberized Finish

**Features:** Single 10 oz. Stainless Steel  
Double Wall Insulated Stemless Wine Glass  
with plastic lid nestled in a metal retro  
Lunchbox with a  
form-fitted insert.

**Imprinting Options:** Direct Print, 1 or 2 color  
on wine glasses, Full Color on Lunchbox

**Lunchbox Colors:** Black, Gold  
Navy Blue, Red, Royal Blue, Silver, White

**Wine Glass Colors:** Black, Royal Blue, Grey,  
Lime, Teal & White



[CLICK HERE FOR PRICING + MORE INFO](#)

\*Pricing subject to change due to ongoing uncertainty regarding overseas tariffs. Please refer to website for the latest pricing.

OUR FULL LINE AT [TEKWELD.COM](http://TEKWELD.COM) | ASI: 90807 | SAGE: 67569 | PPAI: 266346



## RETRO LUNCHBOX + 20 OZ. STAINLESS STEEL TUMBLER KIT807

**Kit Components:** LB101 Retro Lunchbox,  
BTL102 20 oz. Stainless Steel Tumblers

**Features:** Single 20 oz. Stainless Steel  
Double Wall Vacuum Insulated Tumbler  
with plastic lid nestled in a metal retro  
Lunchbox with a  
form-fitted insert.

**Imprinting Options:** Direct Print, 1 or 2 color  
on tumbler, Full Color on Lunchbox

**Lunchbox Colors:** Black, Gold  
Navy Blue, Red, Royal Blue, Silver, White

**Tumbler Colors:** Black, Blue, Red, Copper,  
Silver, Titanium Grey and White



[CLICK HERE FOR PRICING + MORE INFO](#)



## RETRO LUNCHBOX + 20 OZ. ECONOMY LINE- STAINLESS STEEL TUMBLER KIT808

**Kit Components:** LB101 Retro Lunchbox,  
BTL200 20 oz. Stainless Steel Tumbler

**Features:** Single 20 oz. Stainless Steel  
Double Wall Insulated Tumbler with plastic  
lid nestled in a metal retro Lunchbox with  
a form-fitted insert.

**Imprinting Options:** Direct Print, 1 or 2 color  
on tumbler, Full Color on Lunchbox

**Lunchbox Colors:** Black, Gold  
Navy Blue, Red, Royal Blue, Silver, White

**Tumbler Colors:** Black, Blue, Copper,  
Green, Red, Silver Titanium Grey and White



[CLICK HERE FOR PRICING + MORE INFO](#)

\*Pricing subject to change due to ongoing uncertainty regarding overseas tariffs. Please refer to website for the latest pricing.

OUR FULL LINE AT [TEKWELD.COM](http://TEKWELD.COM) | ASI: 90807 | SAGE: 67569 | PPAI: 266346

## RETRO LUNCHBOX + CONTOURED 20 OZ. STAINLESS STEEL TUMBLER KIT810

**Kit Components:** LB101 Retro Lunchbox, BTL101 20 oz. Stainless Steel Contoured Tumbler

**Features:** Single 20 oz. Stainless Steel Double Wall Vacuum Insulated Contoured Tumbler with plastic lid nestled in a metal retro Lunchbox with a form-fitted insert.

**Imprinting Options:** Direct Print, 1 or 2 color on wine glass, Full Color on Lunchbox

**Lunchbox Colors:** Black, Gold Navy Blue, Red, Royal Blue, Silver, White

**Tumbler Colors:** Black, Blue, Copper, Red, Silver, Titanium Grey and White



[CLICK HERE FOR PRICING + MORE INFO](#)



## RETRO LUNCHBOX + 20 OZ. TUMBLER LB101-BTL201

**Kit Components:** LB101 Retro Lunchbox, BTL201 20 oz. Stainless Steel Contoured Tumbler

**Features:** Single 20 oz. Stainless Steel Double Wall Insulated Contoured Tumbler with plastic lid nestled in a metal retro Lunchbox with crinkle fill.

**Imprinting Options:** Direct Print, 1 or 2 color on tumbler, Full Color on Lunchbox

**Lunchbox Colors:** Black, Gold Navy Blue, Red, Royal Blue, Silver, White

**Tumbler Colors:** Black, Blue, Copper, Green, Red, Silver, Titanium, Grey and White



[CLICK HERE FOR PRICING + MORE INFO](#)

\*Pricing subject to change due to ongoing uncertainty regarding overseas tariffs. Please refer to website for the latest pricing.  
OUR FULL LINE AT [TEKWELD.COM](http://TEKWELD.COM) | ASI: 90807 | SAGE: 67569 | PPAI: 266346



# DIRECTMAIL

GREETING CARDS + POST CARDS + TEK BOOKLETS



\*Pricing subject to change due to ongoing uncertainty regarding overseas tariffs. Please refer to website for the latest pricing.  
OUR FULL LINE AT TEKWELD.COM | ASI: 90807 | SAGE: 67569 | PPAI: 266346





**HUGE STOCK**

## GREETING CARDS

- GC-FL107 • Greeting Card with Dental Floss
- GC-MG101 • Greeting Card with Square Magnet
- GC-NF102 • Greeting Card with 3.5" Nail File
- GC-NF106 • Greeting Card with Matchbook Nail File
- GC-TW100 • Greeting Card with Silicone Phone Wallet
- GC-WC200 • Greeting Card with Webcam Cover
- GC-WINE100 • Greeting Card with Wine Charm

**Features:** Folded greeting card with product attached. Can be sent as a direct mail piece with a flat product or can be used as a simple thank you card.

**Imprinting Options:** Full color on greeting card, Direct Print 1, 2 or full color imprint or decal

**Packaging:** A2 Envelope, EVA Pouch for Nail File and A2 Envelope.



[CLICK HERE FOR PRICING + MORE INFO](#)

**HUGE STOCK**

## POSTCARDS

- PC-CC102 • Postcard with Mints
- PC-KEY100 • Postcard with Tek Klean Key
- PC-NF102 • Postcard with 3.5" Nail File
- PC-NF106 • Postcard with Matchbook Nail File
- PC-PCC100 • Postcard with Round Cork Coaster
- PC-PTC106 • Postcard with Beer Mug Coaster

**Features:** Postcard with product attached. This unique item can be utilized as both a promotional product as well as a direct mail piece, it ships in a PVC pouch

**Imprinting Options:** Full color on greeting card, Direct Print 1 or 2 color, or full color

**Packaging:** EVA Pouch for Nail File and PVC Sleeve, PVC Pouch, PVC Sleeve



[CLICK HERE FOR PRICING + MORE INFO](#)



**HUGE STOCK**

## TEK BOOKLETS

- TB-KEY100 • Tekbook with Tek Klean Key
- TB-MIR100 • Tekbook with Round Compact Mirror
- TB-MIR200 • Tekbook with Rectangular Compact Mirror
- TB-NF102 • Tekbook with 3.5" Nail File
- TB2-MG101 • Tekbook with Square Magnet
- TB2-PCC101 • Tekbook with Round Cork Coaster
- TB2-SP102 • Tekbook with Mini Hand Sanitizer
- TB2-TB107 • Tekbook with Travel Toothbrush
- TB-ACR-KC2 • Tekbook with Acrylic Keychain

**Features:** Custom booklet with product attached. Single & double fold options available

**Imprinting Options:** Full color on greeting card, Direct Print 1 or 2 color or full color



[CLICK HERE FOR PRICING + MORE INFO](#)



\*Pricing subject to change due to ongoing uncertainty regarding overseas tariffs. Please refer to website for the latest pricing.

OUR FULL LINE AT [TEKWELD.COM](http://TEKWELD.COM) | ASI: 90807 | SAGE: 67569 | PPAI: 266346



# PACKAGING + FULFILLMENT

GIFT & APPAREL BOXES + LUNCHBOXES + SHIPPING TUBES



\*Pricing subject to change due to ongoing uncertainty regarding overseas tariffs. Please refer to website for the latest pricing.  
OUR FULL LINE AT [TEKWELD.COM](https://www.tekweld.com) | ASI: 90807 | SAGE: 67569 | PPAI: 266346



**HUGE  
STOCK**

## DELUXE GIFT BOXES

**BX-DGB3B** • 10" L x 10" W x 3" H Black Deluxe Gift Box  
**BX-DGB4W** • 4" L x 4" W x 15" H White Deluxe Gift Box  
**BX-DGB8W** • 4" L x 4" W x 6" H White Deluxe Gift Box

Our 2 piece pre-assembled rigid lid with a pop-up box bottom are decorated with a 4 Color Process full-bleed white or metallic custom label. This label includes a raised embossed picture edge.

**Imprinting Options:** Debossed, Full Color Decal



[CLICK HERE FOR PRICING + MORE INFO](#)



**HUGE  
STOCK**

## EZ BOX

**EZ-BOX1** • 8"L x 7.5"W x 4"H Mailer Box  
**EZ-BOX2** • 11"L x 8.5"W x 4"H Mailer Box  
**EZ-BOX3** • 13"L x 12.25"W x 4"H Mailer Box

Easy as 1-2-3 for your kitting needs! Select the box size, crinkle fill and choose from a variety of stock messages or customize your own postcard. Add a personalized or custom branded 4"x4" full-color process label on the center of the box.

Can easily ship with our UPS SureShip program with no drop ship fees.

**Imprinting Options:** Debossed, Full Color Decal



[CLICK HERE FOR PRICING + MORE INFO](#)

### STOCK POSTCARD DESIGNS:



Postcard 2



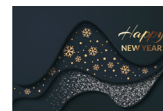
Postcard 3



Postcard 4



Postcard 14



Postcard 17



Postcard 7

\*Pricing subject to change due to ongoing uncertainty regarding overseas tariffs. Please refer to website for the latest pricing.

OUR FULL LINE AT [TEKWELD.COM](http://TEKWELD.COM) | ASI: 90807 | SAGE: 67569 | PPAI: 266346





**HUGE  
STOCK**

## 19" L X 12" W X 3" D APPAREL DEBOSSSED BOX

**BX-APP3-B** • Black Gloss Box

**BX-APP3-K** • Kraft Pinstripe Box

**BX-APP3-W** • White Gloss Box

Our 2-piece, easy assembled, pop up apparel boxes are decorated with a 4 Color Process, Full-bleed white or metallic custom label. This label includes a raised embossed picture edge.

**Imprinting Options:** Debossed,  
Full Color Decal



[CLICK HERE FOR PRICING + MORE INFO](#)

**HUGE  
STOCK**

## 24" L X 14" W X 4" D APPAREL DEBOSSSED BOX

**BX-APP4-B** • Black Gloss Box

**BX-APP4-K** • Kraft Pinstripe Box

**BX-APP4-W** • White Gloss Box

Our 2-piece, easy assembled, pop up apparel boxes are decorated with a 4 Color Process, Full-bleed white or metallic custom label. This label includes a raised embossed picture edge.

**Imprinting Options:** Debossed,  
Full Color Decal



[CLICK HERE FOR PRICING + MORE INFO](#)



\*Pricing subject to change due to ongoing uncertainty regarding overseas tariffs. Please refer to website for the latest pricing.

OUR FULL LINE AT [TEKWELD.COM](http://TEKWELD.COM) | ASI: 90807 | SAGE: 67569 | PPAI: 266346



**HUGE  
STOCK**

## 15" L X 9.5" W X 2" D APPAREL DEBOSSSED BOX

BX-APPI-B • Black Gloss Box  
BX-APPI-K • Kraft Pinstripe Box  
BX-APPI-W • White Gloss Box

Our 2-piece, easy assembled, pop up apparel boxes are decorated with a 4 Color Process, Full-bleed white or metallic custom label. This label includes a raised embossed picture edge.

**Imprinting Options:** Debossed,  
Full Color Decal



[CLICK HERE FOR PRICING + MORE INFO](#)

**HUGE  
STOCK**

## 17" L X 11" W X 2.5" D APPAREL DEBOSSSED BOX

BX-APP2-B • Black Gloss Box  
BX-APP2-K • Kraft Pinstripe Box  
BX-APP2-W • White Gloss Box

Our 2-piece, easy assembled, pop up apparel boxes are decorated with a 4 Color Process, Full-bleed white or metallic custom label. This label includes a raised embossed picture edge.

**Imprinting Options:** Debossed,  
Full Color Decal



[CLICK HERE FOR PRICING + MORE INFO](#)







## RETRO LUNCHBOX

LB101

**Material:** Metal

**Features:** Retro design with collapsible plastic handle and metal latch closure. Measures 8"w x 6"h x 4"d.

**Imprinting Options:** Full color process, full coverage

**Colors:** Black, White, Silver, Red, Navy Blue, Royal Blue



[CLICK HERE FOR PRICING + MORE INFO](#)



## SMALL RETRO LUNCHBOX

LB201

**Material:** Metal

**Features:** Retro design with collapsible plastic handle and metal latch closure. Measures 8"w x 6"h x 3"d.

**Imprinting Options:** Full color process, full coverage

**Colors:** Black, White and Silver



[CLICK HERE FOR PRICING + MORE INFO](#)



## MATTE BLACK RETRO LUNCHBOX

LB401

**Material:** Metal

**Features:** Matte finish. Measures 8"w x 6"h x 4"d with handle and latch closure

**Imprinting Options:** Direct, decal or full color digitek.



[CLICK HERE FOR PRICING + MORE INFO](#)

\*Pricing subject to change due to ongoing uncertainty regarding overseas tariffs. Please refer to website for the latest pricing.

OUR FULL LINE AT [TEKWELD.COM](http://TEKWELD.COM) | ASI: 90807 | SAGE: 67569 | PPAI: 266346



**HUGE STOCK**

## SHIPPING TUBES

SHIP101-6 • 1.5" dia x 6" length  
SHIP101-9 • 1.5" dia x 9" length  
SHIP101-12 • 1.5" dia x 12" length  
SHIP101-15 • 1.5" dia x 15" length

SHIP102-6 • 2" dia x 6" length  
SHIP102-9 • 2" dia x 9" length  
SHIP102-12 • 2" dia x 12" length  
SHIP102-15 • 2" dia x 15" length

SHIP103-6 • 3" dia x 6" length  
SHIP103-9 • 3" dia x 9" length  
SHIP103-12 • 3" dia x 12" length  
SHIP103-15 • 3" dia x 12" length

Mailing tube with a plastic cap on each end.  
USPS mailing options available.

**Imprinting Options:** Full Color, Full Wrap, Full Bleed



[CLICK HERE FOR PRICING + MORE INFO](#)

# PACKAGING + FULFILLMENT OPTIONS

## E-FLUTE CUSTOM BOARD (WHITE OR 4/CP PRINTED)



## CUSTOM-CUT FOAM INSERTS



## CRINKLE PAPER COLORS:



## TISSUE PAPER COLORS:



\*Pricing subject to change due to ongoing uncertainty regarding overseas tariffs. Please refer to website for the latest pricing.  
OUR FULL LINE AT [TEKWELD.COM](http://TEKWELD.COM) | ASI: 90807 | SAGE: 67569 | PPAI: 266346





OUR FULL LINE AT [TEKWELD.COM](http://TEKWELD.COM)  
ASI: 90807 SAGE: 67569 PPAI: 266346