

A woman with long brown hair in a ponytail is sitting cross-legged on a pink mat on a grassy lawn. She is wearing a pink visor, a blue ribbed tank top, white shorts, and white sneakers. She is looking off to the side with a slight smile. The background is a light gray wall with some green foliage on the right.

INFINITY^{her}™

Engineered For Her™



*The baseball cap was originally developed for men,
but Infinity Her™ has **PERFECTED IT FOR WOMEN**
because women love baseball caps too!*

How We Are Different.

Perfectly sized
for a woman's
head.

Smaller, lightweight
visors.

Beautiful trend-right
colors and
patterns

Evolve[®]

Patented*
concealable ponytail
opening.

Elude[®]

Patented* makeup
resistant, wicking and
breathable sweatband.

Easy, snag-
free closures.

GABY

NEW

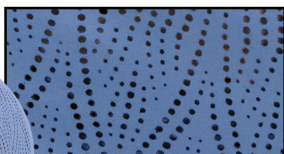
Perforated Performance



Ponytail
Open



Periwinkle/
Floral



Perforated back



Black/Swirl



Dusty Pink/Floral



Lt Grey/Grey Leopard



Periwinkle/Floral



White/Floral

- 97% Polyester/3% Spandex
- Unstructured, Six-Panel, Low Profile
- Slight Pre-Curved Visor with Patterned Undervisor and Sweatband
- Perforated Side and Back Panels
- Elude® Makeup Resistant, Breathable and Wicking Sweatband
- Evolve® Concealed Ponytail Opening
- Slotted Plastic Snap Closure
- Infinity Her™ Embroidered Logo on back left





Slate/Black/Cow

Dusty Pink/Peachy Pink/Butterfly

Ivory/Jade/Swirl



Ivory/Lavender/Smiley



Ivory/Sherbert/Floral



Lt. Blue/Navy/Graffiti



Slate/
Black/
Cow

NEW **ROSIE**

Foam Front Trucker

Ponytail
Open

- 100% Polyester Foam Front Panels
- 100% Polyester Mesh Back Panels
- Structured, Five-Panel, High Profile
- Slight Pre-Curved Visor with Patterned Undervisor and Sweatband
- Elude® Makeup Resistant, Breathable and Wicking Sweatband
- Evolve® Concealed Ponytail Opening
- Plastic Snap Closure
- Infinity Her™ Embroidered Logo on back left

CASSIE

Unstructured Twill



Ponytail
Open



Sunset Yellow/
Polka Dots



- 100% Cotton, Pigment-Washed Twill
- Unstructured, Six-Panel, Low Profile
- Pre-Curved Visor, Contrasting Pattern Undervisor, Sweatband and Seam Tape
- Elude® Makeup Resistant, Breathable and Wicking Sweatband
- Evolve® Concealed Ponytail Opening
- Antique Brass Tri-Glide Closure
- Infinity Her™ Embroidered Logo on Back Left Side

Please allow for color variations in production due to the pigment wash process for this cap



Black/Leopard



Cashmere Blue/Floral



Dusty Pink/Floral



Khaki/Camo



Lavender/Stripes



Lt. Grey/Polka Dots



Navy/Stripes



Olive/Camo



Red/Leopard



Rose/Polka Dots



Royal/Floral



Sage/Polka Dots



Sherbert/Stripes



Sunset Yellow/Polka Dots



White/Floral



Unstructured Mesh Back



Black/Leopard/Khaki

Cashmere Blue/Floral/Khaki

Dusty Pink/Floral/Khaki



Khaki/Camo/Khaki

Lavender/Stripes/Khaki

Lt. Grey/Polka Dots/Khaki



Navy/Stripes/Khaki

Olive/Camo/Khaki

Red/Leopard/Khaki



Rose/Polka Dots/Khaki

Royal/Floral/Khaki

Sage/Polka Dots/Khaki



Sherbert/Stripes/Khaki

Sunset Yellow/Polka Dots/Khaki

White/Floral/Khaki



Ponytail
Open



Royal/
Floral/
Khaki

- 100% Cotton, Pigment-Washed Twill Front Panels
- 100% Polyester Washed Soft Mesh Back Panels
- Unstructured, Six-Panel, Low Profile
- Pre-Curved Visor, Contrasting Pattern Undervisor, Sweatband and Seam Tape
- Elude® Makeup Resistant, Breathable and Wicking Sweatband
- Evolve® Concealed Ponytail Opening
- Plastic Snap Closure
- Infinity Her™ Embroidered Logo on Back Left Side

Please allow for color variations in production due to the pigment wash process for this cap



CHARLIE

Structured Mesh Back



Ponytail
Open



Black Leopard/
Black



- 100% Cotton Micro Canvas Front Panels
- 100% Polyester Mesh Back Panels
- Structured, Six-Panel, Mid Profile
- Pre-Curved Visor with Matching Undervisor
- Elude® Makeup Resistant, Breathable and Wicking Sweatband
- Evolve® Concealed Ponytail Opening
- Plastic Snap Closure
- Infinity Her™ Embroidered Logo on Back Left Side



Black/Black

Black/White

Coral/White



Dusty Rose/White

Grey/White

Heathered Grey/Black



Heathered Grey/White

Lt. Blue/White

Seafoam/White



White/White

Black Leopard/Black

Fashion Camo/Black



Grey Cow/White

Leopard/Black

Snow Leopard/White

JANET

Unstructured Printed Visors



Black/Black/Black Leopard

Black/Khaki/Floral

Black/Khaki/Leopard



Black/White/Cow

Black/White/Zebra

Grey/White/Snow Leopard



Ponytail
Open



Black/
Khaki/
Floral



- 100% Cotton Pigment Washed Twill Front Panels
- 100% Polyester Washed Soft Mesh Back Panels
- Unstructured, Six-Panel, Low Profile
- Pre-Curved Contrasting Patterned Visor
- Elude® Makeup Resistant, Breathable and Wicking Sweatband
- Evolve® Concealed Ponytail Opening
- Antique Brass Tri-Glide Closure
- Infinity Her™ Embroidered Logo on Back Left Side

Please allow for color variations in production due to the pigment wash process for this cap

HATTIE

Unstructured Prints



Ponytail
Open



Floral Camo



- 100% Cotton, Pigment-Washed Twill
- Unstructured, Six-Panel, Low Profile
- Pre-Curved Visor
- Elude® Makeup Resistant, Breathable and Wicking Sweatband
- Evolve® Concealed Ponytail Opening
- Antique Brass Tri-Glide Closure
- Infinity Her™ Embroidered Logo on Back Left Side

Please allow for color variations in production due to the pigment wash process for this cap



NEW



Black Leopard



Black w/ White Polka Dots



Dark Navy Floral



Fashion Camo



Floral Camo



Leopard Print



Lt Blue w/ White Polka Dots



Lt Pink Pastel Floral



Navy w/ White Polka Dots



Navy w/ White Stars



Red w/ White Polka Dots



Red w/ White Stars



Snow Leopard



Tie Dye - Slate Blue





- 100% Cotton Heavy Washed Denim
- Unstructured, Six-Panel, Low Profile
- Pre-Curved Visor, Contrasting Pattern Undervisor, Sweatband and Seam Tape
- Elude® Makeup Resistant, Breathable and Wicking Sweatband
- Evolve® Concealed Ponytail Opening
- Leather Strap with Antique Brass Flip Buckle
- Infinity Her™ Embroidered Logo on Back Left Sidee

JOSIE

Denim Solid Back



- 100% Cotton Heavy Washed Denim Front Panels
- 100% Polyester Washed Soft Mesh Back Panels
- Unstructured, Six-Panel, Low Profile
- Pre-Curved Visor, Contrasting Pattern Undervisor, Sweatband and Seam Tape
- Elude® Makeup Resistant, Breathable and Wicking Sweatband
- Evolve® Concealed Ponytail Opening
- Antique Brass Tri-Glide Closure
- Infinity Her™ Embroidered Logo on Back Left Side

DAISY

Denim Mesh Back



Evolve[®]

Our Patented Concealed Ponytail*



The hidden ponytail design was created to offer the option of a ponytail opening for a secure high ponytail or to look like a regular cap when hair isn't worn up.

There is no unsightly gap or awkward opening when the hair is worn down - her favorite cap can be worn either way.

* Patent # 11,786,001 B2

Elude®

Our Patented Makeup
Resistant Sweatband*



*Our patented**
**MAKEUP RESISTANT
SWEATBAND** *is revolutionary
for women's headwear.*

Elude® solves the problem that most women face with wearing a cap - their makeup staining the sweatband. With this sweatband, the makeup wipes right off so that the sweatband isn't left with a permanent stain.

It has been lab tested and approved for stain resistance, breathability and wicking, making it the ultimate performance in women's headwear.

A LITTLE ABOUT US

Infinity Her™ is a division of Infinity Product Group. We've been designing beautiful and trend-right headwear since 1997.

We have partnered with Sportsman Cap & Bag and their 17 North American Distributors to bring the Infinity Her line to you.

17 North American Sportsman Cap & Bag Distributors

FIND A LOCATION NEAR YOU!



Sportsman Cap & Bag Support Team

913-541-0901

info@headwear.com

1. S&S Activewear
Reno, Nevada 89506
800-523-2155 toll free
www.ssactivewear.com
asi# 84358

2. Mission Imprintables
San Diego, California 92154
800-480-0800 toll free
www.missionimprintables.com
asi# 71781

3. McCreary's Tees
Phoenix, Arizona 85040
800-541-1141 toll free
www.mccrearystees.com
asi# 69885

4. SLC Activewear
West Valley City, Utah 84119
888-557-0799 toll free
www.slactivewear.com

5. S&S Activewear
Fort Worth, Texas 76137
800-523-2155 toll free
www.ssactivewear.com
asi# 84358

We want to make the world a better place for the women we design for.

We have partnered with a local non-profit called Beautiful Lives, whose mission is to support vulnerable women and children in the community.



In addition to this, we donate a portion of our profit in October

to the Breast Cancer Awareness mission. We have also supported several hospitals in the US with donations for families in the hospital during the holidays. Giving is near and dear to us and is ingrained into who we are as a company.



- | | | |
|--|---|--|
| 6. Kati Sportcap & Bag
Houston, Texas 77057
800-392-5559 toll free
www.katisportcap.com
asi# 64140 | 10. S&S Activewear
McDonough, Georgia 30253
800-523-2155 toll free
www.ssactivewear.com
asi# 84358 | 14. S&S Canada
Burnaby, British Columbia, V3N 0B2
800-771-1600 toll free
en-ca.ssactivewear.com
asi# 90703 |
| 7. S&S Activewear
Olathe, Kansas 66061
800-523-2155 toll free
www.ssactivewear.com
asi# 84358 | 11. Carolina Made
Indian Trail, North Carolina 28079
800-222-1409 toll free
www.carolinamade.com
asi# 43993 | 15. S&S Canada
Calgary, Alberta, T3J 2G2
800-771-1600 toll free
en-ca.ssactivewear.com
asi# 90703 |
| 8. S&S Activewear
Lockport, Illinois 60441
800-523-2155 toll free
www.ssactivewear.com
asi# 84358 | 12. S&S Activewear
Pompano Beach, Florida 33069
800-523-2155 toll free
www.ssactivewear.com
asi# 84358 | 16. S&S Canada
Woodbridge, Ontario, L4H 4W9
800-771-1600 toll free
en-ca.ssactivewear.com
asi# 90703 |
| 9. S&S Activewear
West Chester Township, Ohio 45011
800-523-2155 toll free
www.ssactivewear.com
asi# 84358 | 13. S&S Activewear
Robbinsville, New Jersey 08691
800-523-2155 toll free
www.ssactivewear.com
asi# 84358 | 17. S&S Puerto Rico
Catano, Puerto Rico 00962
787-275-3600 toll free
en-pr.ssactivewear.com
asi# 84358 |



infinityforher.com

415 North Bloomington Street • Lowell, AR 72745

info@headwear.com